

**12th INTERNATIONAL CONFERENCE
ON STRUCTURAL ANALYSIS
OF HISTORICAL CONSTRUCTIONS**

SAHC 2021

Online event, 29 Sep - 1 Oct, 2021

P. Roca, L. Pelà and C. Molins (Eds.)



A publication of:

**International Centre for Numerical
Methods in Engineering (CIMNE)**

Barcelona, Spain



ISBN: 978-84-123222-0-0

Printed by: Artes Gráficas Torres S.L., Huelva 9, 08940 Cornellà de Llobregat,
Spain

**12th INTERNATIONAL CONFERENCE
ON STRUCTURAL ANALYSIS
OF HISTORICAL CONSTRUCTIONS**

SAHC 2021

Online event, 29 Sep - 1 Oct, 2021

TABLE OF CONTENTS

Preface	7
Supporting Organizations.....	9
Organizers and Committees	11
Sponsors	15
Summary	17
Contents	19
Presented Sessions.....	45
Authors Index.....	3661

PREFACE

The International Conference on Structural Analysis of Historical Constructions (SAHC) was first celebrated in Barcelona in 1995, followed by a second edition also in Barcelona in 1998. Since then, nine subsequent editions have been organized in different countries of Europe, America and Asia. The SAHC conference series is intended to offer a forum allowing engineers, architects and all experts to share and disseminate state-of-art knowledge and novel contributions on principles, methods and technologies for the study and conservation of heritage structures. Through all its successful past editions, the SAHC conference has become one of the topmost periodical opportunities for scientific exchange, dissemination and networking in the field.

During the last decades the study and conservation of historical structures has attained high technological and scientific standards. Today's practice involves the combination of innovative non-destructive inspection technologies, sophisticated monitoring systems and advanced numerical models for structural analysis. More than ever, it is understood that the studies must be performed by interdisciplinary teams integrating wide expertise (engineering, architecture, history, archeology, geophysics, chemistry...). Moreover, the holistic nature of the studies, and the need to encompass and combine the different scales of the problem –the materials, the structures, the building aggregates, and the territory – are now increasingly acknowledged. Due to all this, the study of historical structures is still facing very strong challenges that can only be addressed through sound international scientific cooperation.

Taking these ideas in mind, the 12th edition of the SAHC conference aimed at creating a new opportunity for the exchange and discussion of novel concepts, technologies and practical experiences on the study, conservation and management of historical constructions.

The present proceedings include the papers presented to the conference, which was finally celebrated on September 29-30 and October 1, 2021, in an on-line mode due to the world sanitary emergency situation created by the Covid-19 pandemic.

The conference included the following topics: history of construction and building technology; inspection methods, non-destructive techniques and laboratory testing; numerical modeling and structural analysis; structural health monitoring; repair and strengthening strategies and techniques; conservation of 20th c. architectural heritage; seismic analysis and retrofit; vulnerability and risk analysis and interdisciplinary projects and case studies.

The SAHC 2021 conference has been possible thanks to the large contribution of the scientific committee and reviewer panel who took care of selecting and review the papers submitted. The contribution of the different sponsors and supporting organizations is also acknowledged. Above all, the conference has been possible thanks to all the authors who have contributed with very valuable papers despite the difficulties caused by the world pandemic. New editions of the conference are already planned in normal face-to-face formats which, in the upcoming years, will provide new opportunities for sharing valuable knowledge and experience on structural conservation, as well as for keeping alive and fulfilling the purpose and aims of the SAHC conference series.

The Organizing Committee

PREFACE

The International Conference on Structural Analysis of Historical Constructions (SAHC) was first celebrated in Barcelona in 1995, followed by a second edition also in Barcelona in 1998. Since then, nine subsequent editions have been organized in different countries of Europe, America and Asia. The SAHC conference series is intended to offer a forum allowing engineers, architects and all experts to share and disseminate state-of-art knowledge and novel contributions on principles, methods and technologies for the study and conservation of heritage structures. Through all its successful past editions, the SAHC conference has become one of the topmost periodical opportunities for scientific exchange, dissemination and networking in the field.

During the last decades the study and conservation of historical structures has attained high technological and scientific standards. Today's practice involves the combination of innovative non-destructive inspection technologies, sophisticated monitoring systems and advanced numerical models for structural analysis. More than ever, it is understood that the studies must be performed by interdisciplinary teams integrating wide expertise (engineering, architecture, history, archeology, geophysics, chemistry...). Moreover, the holistic nature of the studies, and the need to encompass and combine the different scales of the problem –the materials, the structures, the building aggregates, and the territory – are now increasingly acknowledged. Due to all this, the study of historical structures is still facing very strong challenges that can only be addressed through sound international scientific cooperation.

Taking these ideas in mind, the 12th edition of the SAHC conference aimed at creating a new opportunity for the exchange and discussion of novel concepts, technologies and practical experiences on the study, conservation and management of historical constructions.

The present proceedings include the papers presented to the conference, which was finally celebrated on September 29-30 and October 1, 2021, in an on-line mode due to the world sanitary emergency situation created by the Covid-19 pandemic.

The conference included the following topics: history of construction and building technology; inspection methods, non-destructive techniques and laboratory testing; numerical modeling and structural analysis; structural health monitoring; repair and strengthening strategies and techniques; conservation of 20th c. architectural heritage; seismic analysis and retrofit; vulnerability and risk analysis and interdisciplinary projects and case studies.

The SAHC 2021 conference has been possible thanks to the large contribution of the scientific committee and reviewer panel who took care of selecting and review the papers submitted. The contribution of the different sponsors and supporting organizations is also acknowledged. Above all, the conference has been possible thanks to all the authors who have contributed with very valuable papers despite the difficulties caused by the world pandemic. New editions of the conference are already planned in normal face-to-face formats which, in the upcoming years, will provide new opportunities for sharing valuable knowledge and experience on structural conservation, as well as for keeping alive and fulfilling the purpose and aims of the SAHC conference series.

The Organizing Committee

SUPPORTING ORGANIZATIONS



**UNIVERSITAT POLITÈCNICA
DE CATALUNYA
BARCELONATECH**

Universitat Politècnica de Catalunya
(UPC), Barcelona, Spain

CIMNE 



Center for Numerical Methods in
Engineering (CIMNE), UPC, Spain



ICOMOS
international council on monuments and sites

International Council on Monuments
and Sites (ICOMOS)


Iscarsah
International Scientific Committee on the Analysis and
Restoration of Structures of Architectural Heritage

International Scientific Committee for
Analysis and Restoration of Structures
of Architectural Heritage of ICOMOS
(ICOMOS / ISCARSAH)

ORGANIZERS AND COMMITTEES

Organizing Committee



Pere Roca

Technical University of Catalonia



Climent Molins

Technical University of Catalonia



Luca Pelà

Technical University of Catalonia



Paulo Lourenço

University of Minho



Claudio Modena

University of Padova

SCIENTIFIC COMMITTEE

National Members

- Jose M. Adam, Polytechnic University of Valencia
- Ernest Bernat, Polytechnic University of Catalonia
- Pedro Calderón, Polytechnic University of Valencia
- Miguel Cervera, Polytechnic University of Catalonia
- Victor Compán, University of Seville
- Leire Garmendia, University of the Basque Country
- Lluís Gil, Polytechnic University of Catalonia
- Pilar Giráldez, University of Barcelona
- Salvador Ivorra, University of Alicante
- Miquel Llorens, University of Girona
- Ignacio Lombillo, University of Cantabria
- Camilla Mileto, Polytechnic University of Valencia
- Javier Mosteiro, Technical University of Madrid
- Belén Riveiro, University of Vigo
- Savvas Saloustros, Polytechnic University of Catalonia
- Fernando Vegas, Polytechnic University of Valencia
- Marius Vendrell, University of Barcelona

International Members

- Rafael Aguilar, Pontifical Catholic University of Peru
- Takayoshi Aoki, Nagoya City University
- Alessandra Aprile, University of Ferrara
- Oriol Arnau, National Autonomous University of Mexico
- Görün Arun, Yildiz Technical University
- Hiram Badillo, Autonomous University of Zacatecas
- Andrea Benedetti, University of Bologna
- Rita Bento, University of Lisbon
- Katrin Beyer, Swiss Federal Institute of Technology in Lausanne
- Rubén Boroschek, University of Chile
- Guido Camata, University of Chieti-Pescara
- Claudia Cancino, Getty Conservation Institute
- Eva Coïsson, University of Parma
- Dina D'Ayala, University College London
- Gianmarco de Felice, Roma Tre University
- Gianfranco de Matteis, University of Campania
- Matthew DeJong, University of California at Berkeley
- Milos Drdácý, Institute of Theoretical and Applied Mechanics
- Khalid El Harrouni, National School of Architecture
- Ahmed Elyamani, Cairo University
- Yohei Endo, Shinshu University
- Mariana Esponda, Carleton University
- Antonio Formisano, University of Naples Federico II
- Dora Foti, University of Bari
- Enrico Garbin, University of Padova
- Giorgia Giardina, University of Cambridge

- Toshikazu Hanazato, Mie University
- Mehrdad Hejazi, University of Isfahan
- Marcela Hurtado, Federico Santa María Technical University
- Jason Ingham, University of Auckland
- Wolfram Jager, Technical University Dresden
- Stephen J. Kelley, SJK Inc.
- Debra Laefer, New York University
- Sergio Lagomarsino, University of Genova
- Alessandra Marini, University of Bergamo
- Guillermo Martínez, Michoacan University of Saint Nicholas of Hidalgo
- Arun Menon, Indian Institute of Technology Madras
- Gabriele Milani, Polytechnic University of Milan
- John Ochsendorf, Massachusetts Institute of Technology
- Daniel Oliveira, University of Minho
- Fernando Peña, National Autonomous University of Mexico
- Andrea Penna, University of Pavia
- Maurizio Piazza, University of Trento
- Mariapaola Riggio, Oregon State University
- Jan Rots, Delft University of Technology
- Antonella Saisi, Polytechnic University of Milan
- Cristián Sandoval, Pontifical Catholic University of Chile
- Vasilis Sarhosis, The University of Leeds
- Yaacov Schaffer, Israel Antiquities Authority
- Nigel Shrive, University of Calgary
- Marek Sklodowski, Institute of Fundamental Technological Research
- Pierre Smars, National Yunlin University of Science and Technology
- Luigi Sorrentino, Sapienza University of Rome
- Enrico Spacone, University of Chieti-Pescara
- Nicola Tarque, Pontifical Catholic University of Peru
- Adrienn Tomor, University of the West of England
- Daniel Torrealva, Pontifical Catholic University of Peru
- Maria Rosa Valluzzi, University of Padova
- Koenraad Van Balen, KU Leuven
- Humberto Varum, University of Porto
- Els Verstrynge, KU Leuven
- Elizabeth Vintzileou, National Technical University of Athens
- Roko Žarnić, University of Ljubljana

REVIEWER PANEL

- Daniela Addessi
- Maurizio Angelillo
- Jesus Bairán
- Elisa Bertolesi
- Maria Bostenaru
- Giuseppe Brando
- Manuel Buitrago Moreno
- Albert Cabané
- Chiara Calderini
- Ivo Calì
- Lorenzo Cantini
- Silvia Caprili
- Giuliana Cardani
- Claudia Casapulla
- Rosario Ceravolo
- Francesca Ceroni
- Francesco Clementi
- Camilla Colla
- Cossima Cornadó
- Sara Dimovska
- Anastasios Drougkas
- Chiara Ferrero
- Virginia Flores Sasso
- Aguinaldo Fraddosio
- Donald Friedman
- Stefano Galassi
- Larisa García-Ramonda
- Lucia Garijo
- Carmelo Gentile
- Lorenzo Jurina
- Philip Karklbrenner
- David López
- Jose Machado
- Nirvan Makoond
- Nuno Mendes
- Andronki Miltiadou
- Bernt Mittnacht
- Tom Morrison
- Marius Mosoarca
- Juan Murcia
- Federica Ottoni
- Bartolomeo Pantò
- Marisa Pecce
- Chiara Pepi
- Elisa Poletti
- Bora Pulatsu
- Enrico Quagliarini
- Luisa Rovero
- Nicola Ruggieri
- Santiago Sanchez
- Mario Santana
- Michel Schuller
- Jorge Segura
- Vincenzo Sepe
- Alberto Taliercio
- Dimitris Theodossopoulos
- Filippo Ubertini
- Giuseppina Uva
- Graça Vasconcelos
- Maria Belén Jiménez

SPONSORS

PRO_SAM is a plugin which connects PRO_SAP with SAM II solver, a powerful tool for pushover analysis of new and existing structures.

SOLVER RELIABILITY

SAM II, conceived by Prof. Magenes, Eng. Manzini and Eng. Morandi, is a well-known and robust non-linear solver highly referenced in international literature.

CODES OF PRACTICE

Eurocode 8, Italian codes.

MATERIALS

Unreinforced and reinforced masonry, reinforced concrete and generic linear materials.

LOCAL FAILURE MECHANISMS

Automatic geometry interfacing with PRO_CineM for kinematic linear and non-linear analyses.

LINEAR ANALYSIS

Automatic generation of plate and shell linear model from the equivalent frame.

FREE

PRO_SAM is free for students, scholars or scientific research.



Asdea Software S.r.l. is part of the burgeoning ASDEA brand, which includes ASDEA S.r.l. and ASDEA Hardware. We are a software development company staffed with engineers, researchers, and software developers. Our goal is to provide innovative software solutions customized for clients and of original in-house design for numerical simulation and data visualization. We are the company behind the revolutionary software STKO (Scientific ToolKit for OpenSees). More than just a simple GUI, STKO features a Python scripting interface, meaning that users can customize and program the already powerful pre and postprocessors as needed, harnessing the full power of OpenSees.



CALSENS develops state-of-the-art fiber-optic sensors and designs, deploys and operates structural health monitoring (SHM) solutions to monitor bridges, buildings and vehicles (ships, airplanes, UAV), among other structures. Our services are based on constant research and innovation, creating products and services at the frontier of knowledge.

CALSENS services cover the full process of monitoring. Starting from the modelling of structural behavior and choice of control parameters, continuing with the election, design, fabrication and installation of the sensors and sensing system, until the processing, interpretation and evaluation of the data.

CALSENS has a multidisciplinary team with a high degree of expertise in the fields of civil engineering, photonic technologies, signal processing, materials engineering or computing.





Kerakoll is the international leader in the GreenBuilding sector, providing solutions that safeguard the health of both the environment and the people.

The company mission is embrace and promote GreenBuilding as the new low environmental impact approach to building and promote higher quality homes around the world through the use of eco-friendly building materials and innovative solutions.

Since 1968 – when the Group was founded in Sassuolo– Kerakoll has been pursuing a clear course of development in Italian and international markets for building materials, that has taken the company to the forefront of the GreenBuilding industry and to a level of technological supremacy famous around the globe.



S.T.A. DATA, founded in 1982 by Adriano Castagnone, civil and structural engineer since 1978, and pioneer of scientific software for structural engineering, is composed of more than 20 people, all highly qualified professionals. Our aim is to offer software for structural calculation that allow designers to face everyday work with simplicity and effectiveness.

S.T.A. DATA offers 3Muri Project, developed specifically for masonry.

In fact, it is not a generic Finite Element software adapted for masonry structures; 3Muri Project was born from the specific research for these structures and captures all the characteristics to obtain a safe and reliable calculation of historical, existing and new buildings.



IRS is a smart Engineering, Research and Development company founded by a group of engineers in 1993. IRS Structural Health Monitoring division designs, develops and integrates automated systems for mechanical and structural monitoring. Thanks to technological innovation, advanced modeling and design as well as professional production and after sales service provide a complete suite of structural health monitoring solutions. Monitoring version are both portable version for laboratory tests and one shot structural assessments and long term and in situ applications like historical sites, buildings, bridges, dams and tunnels. IRS is part of a group of companies including Measureit, with whom provides consultancy and sales of precision sensor and data acquisition systems.

MECHANICAL CHARACTERIZATION OF TRADITIONAL MASONRY IN AN HOMOGENEOUS TERRITORY: VALTELLINA

MATTIA SALA*, DARIO FOPPOLI†, STEFANO DELLA TORRE‡

* Graduated in Building Engineering at Politecnico di Milano
e-mail: mattia5.sala@mail.polimi.it - Web page: <http://www.polimi.it>

† Technical director of Foppoli Moretta e Associati s.r.l.
Via G.F. Damiani 2, 23037 Tirano (SO)
e-mail: posta@foppolimoretta.it - Web page: <http://www.foppolimoretta.it>

‡ ABC department, Politecnico di Milano
(Department of Architecture, Built environment and Construction engineering)
Piazza Leonardo da Vinci, 32, 20133 Milano (MI)
e-mail: stefano.dellatorre@polimi.it - Web page: <http://www.abc.polimi.it>

Keywords : Valtellina, masonry, drystone, stones, lime mortar, Non Destructive Testing.

Abstract. *The current Italian Building Code provides tables with standard values of the mechanical characteristics of existing masonry. These tables refer to specific typologies, as described, according to masonry texture. As experience suggests, the way in which the masonry is built up could really affect its structural behaviour, both in terms of mechanical properties and failure mechanisms. Furthermore, the code entrusts each Region to improve and better define these mechanical characteristics, specifically in areas where they could be regarded as homogeneous, in order to improve definitions of the quality, the behaviour and the mechanical properties with a higher degree of precision and knowledge.*

Valtellina, located in the north of the Lombardy region and in the middle of the Alps, can be regarded as a homogeneous area because of its specific masonry, built up with hard rock stones and weak lime mortar. The available in-situ experimental data about this masonry typology, achieved through MDTs and NDTs, was collected, implemented and improved with additional tests to identify the relevant mechanical properties. This was aimed to classify and structurally identify this specific regional masonry typology, never analysed before.

1 INTRODUCTION

The assessment of historic building vulnerability is a big issue in Italy, mainly due to the fragility of the area which is often subject to devastating events, such as floods and landslides, but above all earthquakes that, in recent years, have severely affected the national territory. Natural events, although not always of high intensity, often have a devastating impact on the historical buildings, in particular from the cultural point of view, since the repairs of the damages, whenever possible, always result in an effective loss of the cultural value of the artefacts.

In Italy the attention to the structural vulnerability under the effects of natural events was drawn from the earthquake that affected the Friuli region in 1976 and further increased with the subsequent seismic events (Irpinia 1980, Umbria-Marche 1997, L'Aquila 2009, Emilia 2012 up

to the last Amatrice-Norcia 2016 earthquake and aftershocks). These experiences highlighted two crucial areas of lacking knowledge that need to be improved:

- the damage and vulnerability of masonry and buildings subjected to seismic action;
- the predictive models, mechanical interpretations and effectiveness of the interventions.

The failure of a structural system focuses on the weakest link of the structural chain: while on the one hand the design of new buildings makes this evaluation simple, on the other hand for existing structures it is difficult to properly identify the relevant mechanism.

The current Italian Building Code [1] defines the properties of the masonry through numeric tables, which classify the stone and mortar masonries on the basis of six typologies, identified by the observation of the elevation texture, and the solid brick masonries on a single category. The mechanical characteristics of the walls can also be identified on a case-by-case basis by carrying out MDTs (Minor Destructive Tests) and NDTs (Non-Destructive Tests). Furthermore, the code entrusts each region to improve and better define the mechanical characteristics of the masonries, specifically in areas that can be regarded as homogeneous in order to define their quality, behaviour and mechanical properties with a higher degree of precision and knowledge.

The aim of this research is a first collection of the available in-situ experimental data referred to the area of the Valtellina region, gained through MDTs (e.g. flat-jack tests, both single and parallel) and NDTs (e.g. sonic tests). Moreover, the analyses were implemented with other methods: further sonic tests to define the masonry quality and penetrometric tests to define the mortar properties. Data were finally processed in order to classify and mathematically determine the masonry typology and its relevant mechanical characteristics.

2 CONSTRUCTION MATERIALS

Valtellina, the study area, is a valley located in Lombardy, in the North of Italy, in the middle of the Alpine arc, close to the border with Switzerland. The geographical location of the valley has strongly influenced its historical and civil events: due to its key position between the South and the North of the Alps, the lordship of the valley has long been disputed between Milan in Italy and Chur in Switzerland, with alternate upheavals that have moved northward and southward the administrative and economic axis. For these reasons, this territory is a significant object of study, as it is peculiar and at the same time exemplary of the development of an area placed in "*the Alps, a unique region in the centre of Europe*"[2].

From a geological point of view, Valtellina is located in the western area of the Alps, characterized by silicate rocks, rather than the dolomitic and limestone ones which are present in the eastern area. The valley is located exactly along the Tonale fault, an imposing tectonic dislocation that runs from East to West in the central part of the Italian Alps, which means that most of the rocks placed along the territory are of metamorphic origin. The intrinsic characteristics of the metamorphic rocks (first of all their stratification) strongly influence the masonry construction techniques in the area. On the other hand, the relative difficulty in finding limestone rocks affects (in a negative way) the availability of lime mortars.

The historical buildings are usually made with the rock materials that were easily available (close to the construction site), which required minimal processing and allowed a fast use. Only for the buildings with iconic importance, as churches or noble palaces, the stones were sometimes taken at a greater distance and often selected and processed with a greater care in

order to underline the prominence of these building. Anyway, in the Valtellina context this was mainly limited to the production of decorative elements such as mouldings, columns and pilasters. As for the type of stones used, Valtellina masonries can be classified according to three types:

- › Rough-stone masonries (*Fig. 1*): shapeless pieces of stone material, obtained exclusively by splitting the rock mass or collecting the rock pieces lying on the ground; their shape, often multifaceted irregular with sharp edges, allows for stable positioning of the components to be obtained even without the use of mortar to build drystone walls;
- › Rough-hewn stone masonries (*Fig. 1*): also called “*drafts*”, they have dimensions which are generally similar to the rough ones; they have a defined shape with a tolerance due to the surfaces processing;
- › Cut-stone masonries (*Fig. 1*): generally coming from compact rocks characterized by a good processing capability to be regularized with the squaring and finishing processes.

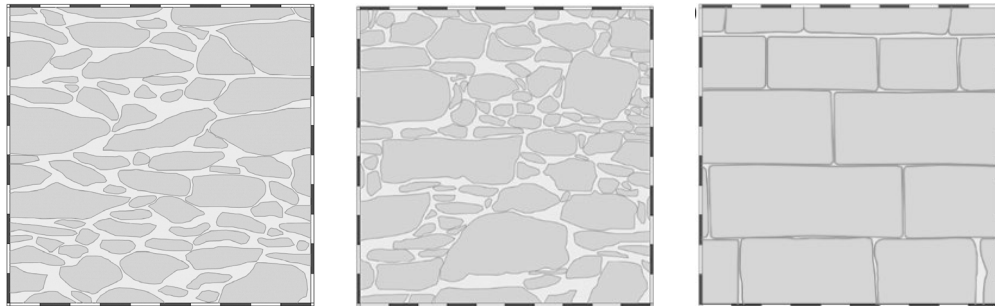


Figure 1: Rough stone masonry – “*Piatti-Reghezani*” Manor, Teglio (TC1); Rough-hewn masonry – City hall, Ponte in Valtellina (PM1); Cut stone masonry - *Ganda Bridge*, Morbegno

The masonry walls built with rough stones represent the most common case in Valtellina. On the one side, as already stated, the scarce availability of easily workable stones limited the use of cut or carved stones to elements of particular value. The already mentioned predominant presence of metamorphic rocks naturally provided stones suitable for the construction. Indeed, because of their elongated shape and easiness of splitting according to the stratification plans, the lithic elements taken from metamorphic rocks are definitely suitable for the construction of the traditional wall texture.

The production of mortar is conditioned by the availability of suitable binders, to be used individually or in a mixture with each other. For this purpose, in the Valtellina area there are only very localized limestone outcrops. Extensive limestone outcrops, belonging to the group of the main Dolomia, can be found only in upper Valtellina, around Bormio.

The prevalent use of rough stones would lead to suppose the need of high mortar quantities inside the walls; however, the elongated conformation of the metamorphic stones implies that the rocks can be laid in rather horizontal courses, thus obtaining internal contact points and limiting the use of binding: this construction technique also derives from the tradition of the Valtellina walling method. To evaluate this circumstance, the front elevation of the walls was scanned in order to define the mortar quantity, which average percentage, referred to the whole

masonry, was found to be around 25%. It should be noted that this is only a qualitative estimation: due to wall texture the actual mortar quantity in the section can be different from the quantity calculated on the basis of the front elevation.

3 CONSTRUCTION TECHNIQUES

The construction techniques used in Valtellina are of course conditioned by the type and quality of the rocks and by the poorness of mortar used. Techniques that use rough or rough-hewn stones are defined "complex", as the arrangement has to follow precise rules and a careful selection of the stones to be used [3]. Techniques that use cut stones, called "ashlars", are defined "simple", as the parallelepiped shape deriving from shaping processes allows a simpler placement, with a lower quantity of mortar. Following the scarce use of cut-stones elements, the masonries detected on the territory of study are mainly made with "complex" techniques. It is worth noting that cut stones are often used only in the external fronts, giving a good look but no warranty that in the interior of the wall stones are laid in a correct way.

3.1 Drystone walls

Valtellina has a very peculiar "cultural" landscape, the most evident expression of which is the extensive terracing that characterizes the Rhaetian slope at the lowest altitudes, approximately up to 1000 m above sea level. The available information reports an historical overall terraced surface of around 60 km²; the part currently cultivated (with vineyards) is less than 1/6 of its maximum historical extension. This landscape is mainly characterized by the use of retaining walls made with drystone technique [4].



Figure 2: Typical facing of a drystone wall of the Valtellina terraces

In the territorial context of this study the characteristics of drystone masonry (*Fig. 2*) have strongly permeated even the techniques of stone and mortar ones: that's why useful information for the ordinary buildings can also come from the study of the construction techniques of the drystone masonry. On the basis of the technical literature the stability of a drystone wall is strongly related to the experience and to the skill of the mason, who has to respect six specific "rules of art" [5]: proper setting of the foundation (generally with low depth), vertical offset of the joints to obtain the optimal distribution of the weights; horizontality of the stone courses;

balancing of the stones; transversal connections to ensure a correct interlocking of the wall-layers and finally particular attention to the connection of the orthogonal walls (cornerstones).

3.2 Masonry walls

The main part of Valtellina buildings, even those that can be classified as cultural heritage (churches, palaces and rural nuclei) are characterized by a lithological variety and by the use of construction techniques almost indistinguishable from the drystone walls, although generally encompassing the use of mortar (*Fig. 3*).



Figure 3: Similarities among the drystone rural construction (left), stone and mortar rural construction (middle) and stone and mortar wall of the church of S. Ignazio in Ponte in Valtellina (right)

This results in a complication of the construction phases due to the need of lime and mortar production, but at the same time it simplifies the placement of the stones as it allows masons to pay less attention to the selection of the lithic elements, as mortar regularizes the areas of non-contact between the stones. However, the “rules of art” mentioned above for drystone masonry are systematically respected nonetheless.

Due to the scarcity of documentary and bibliographic sources, it was not possible to trace back a proper description of construction techniques in Valtellina: for this reason, a detailed analysis of the characteristic of two buildings historically representative of the local context was carried out: S. Ignazio Church at Ponte in Valtellina and Masegra Castle at Sondrio.

For the castle, the lithological variety of the stones shows a close relevance to the territorial context of the nearby Valmalenco, upstream of the Mallero river that flows in the nearby of the building; some blocks are also presumably attributable to the glacial deposits present on the Rhaetian slope. For this reason, the materials are of a crystalline nature, metamorphic or intrusive. The foundation masonry walls are laid out with sub-horizontal courses consisting in stone of various lithology and size (mainly gneiss and serpentine) and lime mortar of varying colour and grain size. The elevation walls are also characterized by sub-horizontal layers in stone blocks and mortar courses with large thickness.

The systematic observation of the wall facing masonries of the castle and of the other cases of study highlights that, regardless of the building periods, the masonries can be sorted into two types (*Fig. 4*):

- masonries made with stones laid with disordered texture,
- masonries made with stones laid with rather horizontal courses (good-texture).

These masonries can be built both with rough or rough – hewn stones, with the latter being predominant in the second type.

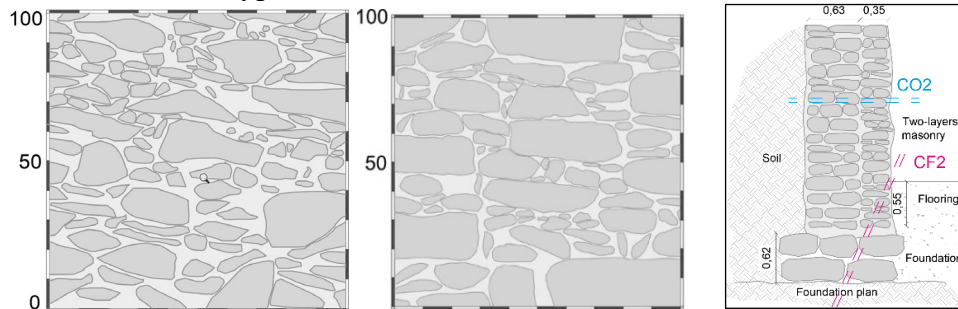


Figure 4: Masonry wall facing and section of the Masegra Castle masonries

4 DATA COLLECTION

The analysis of the masonry mechanical characteristics is a fundamental basis for the correct modelling of the structural behaviour of the building. Both for existing buildings [1] and for cultural heritage ones [7] Non-Destructive (NDTs) and Minor Destructive (MDTs) tests allow the quantitative determination of these characteristics. It is important to underline, how the Guidelines [7] explicitly state, that “*Non Destructive diagnostic Techniques of indirect type, such as sonic and ultrasonic tests, assess the homogeneity of the mechanical parameters ... but they do not provide a reliable quantitative estimation of their values ... Therefore, the direct measurement of the mechanical parameters ... in particular those relating to resistance, can be performed only through Minor Destructive or Destructive Tests, even if applied to limited portions. Calibrations of Non Destructive Tests with (Minor) Destructive Tests can be used to reduce the invasiveness of the investigation campaign.*”

The numerical analysis performed in the present research was developed from the wide database made available by the company Foppoli Moretta & Associati consulting engineers and coming from their professional activity. Both NDTs and MDTs were performed in compliance with the standards listed in Table 1.

Table 1: Reference standards for the tests performed

TEST		CODE
FJs	Single flat jack	<i>ASTM C 1196-14 (2014). Standard test method for in situ compressive stress within solid unit masonry estimated using the flatjack method.</i>
FJp	Parallel flat jacks	<i>ASTM C 1197-14 (2014). Standard test method for in situ measurement of masonry deformability properties using the flatjack method.</i>
SO	Sonic test	<i>UNI EN 12504-4 (2005), Prove sul calcestruzzo nelle strutture - Parte 4: Determinazione della velocità di propagazione degli impulsi ultrasonici.</i>
PT	Penetrometric test	<i>Jurina, L. (2007), La caratterizzazione meccanica delle murature parte prima: prove penetrometriche. Politecnico di Milano – DIS</i>
CO	Corings	<i>UNI EN 12504-2 (2019), Prove sul calcestruzzo nelle strutture - Parte 1: Carote - Prelievo, esame e prova di compressione.</i>

The available dataset has been integrated with experimental tests, specifically carried out for this work, which have been marked in bold in the following Table 2.

Table 2: Tests performed

Nr.	Location	Code	Construct. Year	FJs	FJd	SO	PT	CO
1	Vervio	SA1	1664	3	3	-	-	2
2	Sondrio	SS1	1885	4	4	-	-	4
3	Teglio	BT1	1433	-	-	5	8	-
4	Bianzone	BB1	1600	2	1	5	2	2
5	Ponte in Valtellina	SI1	1640	-	-	3	10	3
6	Sondrio	ST1	1826	6	6	-	-	-
7	Gravedona	GS1	-	3	3	-	-	-
8	Ponte in Valtellina	PM1	1942	3	3	-	-	-
9	Teglio	TC1	1700	3	3	-	-	3
10	Livigno	LS1	1954	3	3	-	-	-
11	Sondrio	CM1	1041	9	9	6	10	10
12	Bormio	BS1	1965	-	3	-	-	-
13	Tirano	TB1	-	2	3	9	-	2
14	Villa di Chiavenna	VC1	1800	2	2	3	2	-
15	Madesimo	MC1	-	-	-	4	-	-
16	Livigno	FC1	1912	-	-	8	4	-
17	Germasino	GM1	-	-	3	-	-	-
TOTAL nr.				40	46	43	36	26

Table 3: Resume of the (average) results

Building	$E_d(0.4-0.8)$ [N/mm ²]	$G(0.4-0.8)$ [N/mm ²]	ν	$E_e(0.4-0.8)$ [N/mm ²]	σ_v [N/mm ²]	σ_{max} [N/mm ²]	v_p [m/s]	f_m [N/mm ²]
SA1	3030	2702	0.10	3967	1.20	2.10	-	-
SS1	5314	-	-	4973	0.50	2.80	-	-
BT1	-	-	-	-	-	-	1590	1.80
BB1	5263	-	-	7562	0.60	2.40	1534	1.80
SI1	-	-	-	-	-	-	1603	1.70
ST1	4076	1069	0.10	5262	0.40	2.50	-	-
GS1	3724	710	0.20	5433	0.50	2.90	-	-
PM1	2119	963	0.10	3095	0.50	2.30	-	-
TC1	1095	415	0.50	2564	0.50	1.50	-	-
LS1	1340	629	0.10	2698	0.40	2.00	-	-
CM1	2744	1059	0.30	5582	0.60	3.10	2277	1.70
BS1	11142	-	-	14213	-	4.00	-	-
TB1	2256	1064	0.10	3651	0.30	2.70	1655	-
VC1	4444	1893	0.20	4829	0.60	4.00	2786	1.10
MC1	-	-	-	-	-	-	1917	1.50
FC1	-	-	-	-	-	-	2493	1.60
GM1	721	313	0.20	1802	-	1.40	-	-

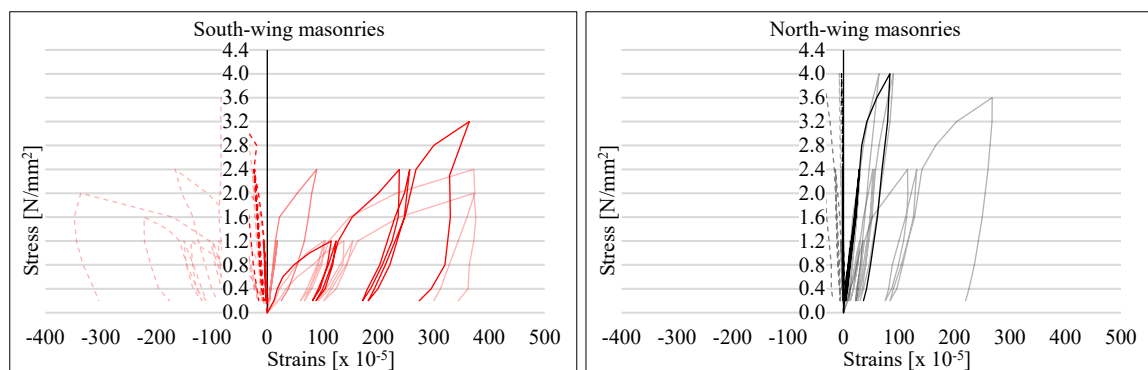
Numerical data taken from these tests have been processed to obtain the most significant mechanical characteristics of the masonries, as follow:

- Single flat jack [9], [10]: masonry compressive stress state (σ_v);
- Double flat jack [9], [10]:
 - deformability module (E_d), calculated at the first loading stage;
 - tangential deformability module (G), calculated at the first loading stage;
 - Poisson coefficient (ν), calculated at the first loading stage;
 - elastic module (E_e), calculated at the first unloading stage;
 - maximum compression strength reached for the masonry (σ_{max});
- Sonic test [10], [11]: elastic sonic wave propagation velocity (v_p) inside the masonry;
- Penetrometric test on mortar [12]: compression strength of the mortar (f_m).

The values of the average mechanical properties, determined for each of the buildings analysed, are summarized in the previous Table 3.

5 DATA ANALYSIS

The collected data is a significant statistic base that allows a relevant analysis both with reference to the single test and by matching the results of different methods in order to identify the significant characteristics. By way of example, in Graph 1 the stress vs. strain curve obtained from the double flat jacks tests performed at Masegra Castle (CM1) are plotted: the mechanical characterization suggests grouping the samples into two typologies.

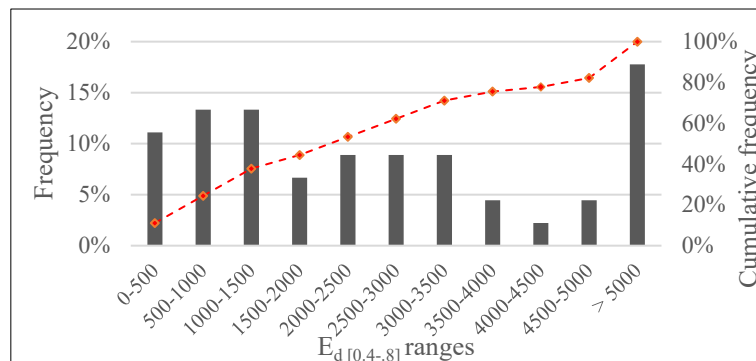


Graph 1: Stress-strain relationship of the castle masonries – South-wing (red) & North-wing (black)

Further analyses highlighted a linear correlation between the deformability modules $E_{d[0.4-.8]}$ calculated at the first load stage and the elastic modulus E_e calculated at the first unloading stage. The draft data provides a correlation with $R^2 \cong 77\%$, by purging them from some values with little reliability allow to give up to $R^2 \cong 92\%$, indicating a very good correlation.

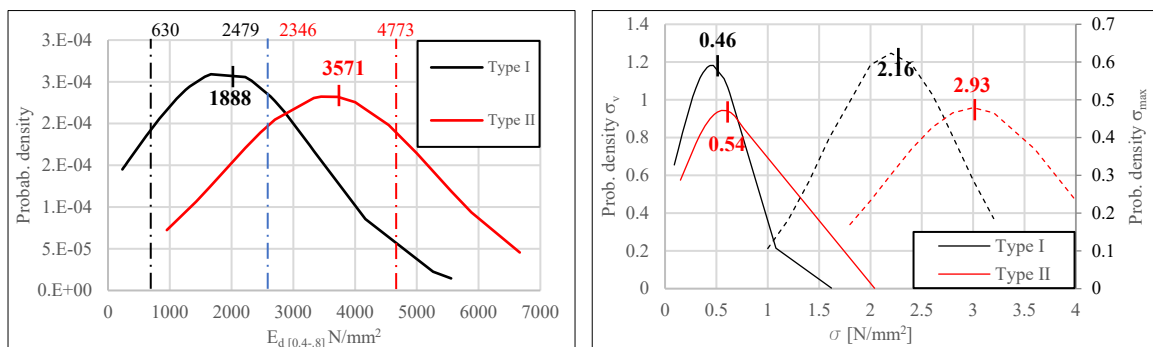
Based on the above considerations, the frequency of the deformability modules of the single tests were plotted in Graph 2. It is a matter of fact that the Valtellina masonries have a very high variance of modules, therefore it is difficult to make considerations on this draft data. Following the previous typological and mechanical observations, the walls were divided in compliance with the description of the elevation texture between “masonry with disordered texture” (type I, n. 25 reference tests) and “masonry with rather horizontal courses” (type II, n. 15 reference

test). The higher module values $E_d [0.4-0.8] > 5000$ were identified as anomalous and excluded from the analysis.



Graph 2: Deformability module frequency distribution - percentage and cumulative frequency

This way it was possible (Graph 3 left) to draft two normal distribution curves referred to type I and type II and to calculate the respective 25% and 75% percentiles. It can be noted that the disordered masonries have an average value $E_d [0.4-0.8] = 1888 \text{ N/mm}^2$, while the good-texture masonries have an average value $E_d [0.4-0.8] = 3571 \text{ N/mm}^2$. The values calculated according to the different typology are summarized in Table 4. It has to be noted that the average $E_d [0.4-0.8]$ values found are not very different from the values that can be calculated for the two masonry typologies identified at Masegra Castle, as previously described.



Graph 3: Normal distribution curve of deformability modulus and of σ_v and σ_{max}

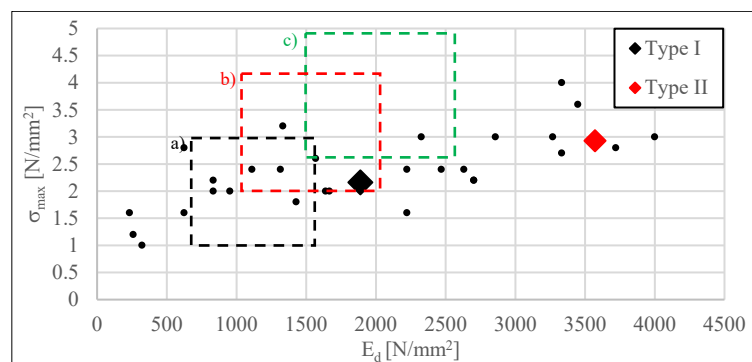
The two distribution curves (type I and type II) intersect for a good part of their development, focusing not only on the type of stone used, but also on the masonry construction technique: walls with good texture, which have a high contact among the stones (little mortar quantity) have a higher elastic modulus. Conversely the strength of the mortar is not a discriminating factor because it presents no relevant variations.

Analysing the overall masonry stress state it is possible also to note that in any case the current compression stress does not exceed the maximum detected one (Graph 3 right): thus, the average value of the safety coefficient $\gamma = \frac{\sigma_{max}}{\sigma_v}$ can be calculated, which turns out to be quite satisfactory in the test load conditions (means static with only own-weights).

Table 4: Resume of the mechanical characteristics of the masonry, according to the type

Masonry type	E_d (0.4-0.8) [N/mm ²]	G (0.4-0.8) [N/mm ²]	ν [-]	E_c (0.4-0.8) [N/mm ²]	σ_v [N/mm ²]	σ_{max} [N/mm ²]	v_p [m/s]	f_m [N/mm ²]
I	1888	750	0.18	3578	0.46	2.16	1332	1.45
II	3571	1344	0.09	5360	0.54	2.93	2443	1.41

A further attempt was made to divide the masonry characteristics by type of construction (civil, ecclesiastical and noble buildings), by location (higher, middle and lower Valtellina) and by construction period, but no significant result was obtained, proving that there was no real difference in the construction techniques among the mentioned classes. The only qualitative observation was that the noble buildings are mainly made with disordered stone masonry and that the buildings, from the 20th century onwards, are mainly built with rough-hewn ashlars.

**Graph 4: E_d [0.4-0.8] - σ_{max} correlation with the limits proposed by the Italian guidelines**

Finally, the values of E_d [0.4-0.8] were plotted versus the maximum detected compression stress σ_{max} . This graph doesn't have a very good correlation, but it allows an interesting graphic comparison with the ranges (dashed box) provided from the Italian Code [1] table C8.1.5. These ranges were compared to the values provided from the current analysis (dash-dot lines): for the masonries classified as type II, the identified Valtellina masonry proved to be stiffer than the values provided by the code. The available data are of course limited to the walls that were brought to compression failure during the tests.

6 CONCLUSIONS

The masonry construction techniques in Valtellina are strictly connected to the historical, cultural and geological features of this territory. On the basis of more than 190 NDTs and MDTs, this paper proposes a preliminary classification of the typical local masonry walls (made with stone and mortar) into two typologies: “*masonry with disordered texture*”, “*masonry with rather horizontal courses*”. The data analysis allows the estimation of the typical mechanical characteristics and their variation. The type of construction, the location and the construction period do not seem to be influential parameters in this analysis. This work can be regarded as a first effort, as suggested the Italian Building Code, for the definition of the mechanical characteristics of the typical masonry that can be regarded as homogeneous in a specific area of Lombardy region.

ACKNOWLEDGMENTS

The research described in the present paper was carried out within a master thesis work and under the R&D plan “In Situ Testing of Masonry Characteristics” developed by the Italian company “Foppoli Moretta e Associati consulting engineers” with their own resources and without any public grant.

Thanks to prof. Maria Adelaide Parisi for her advice, and to all the clients who requested and allowed the tests necessary for the data collection, particularly the municipalities of Sondrio and Bianzone and the Polo Museale of Lombardy.

REFERENCES

- [1] Ministero Infrastrutture e Trasporti. (2019). *Istruzioni per l'applicazione dell'«Aggiornamento delle "Norme tecniche per le costruzioni"»* (Guidelines for the Application of Italian Building Code for Constructions)
- [2] Bätzing Werner (2003). *Die Alpen – Geschichte und Zukunft einer europäischen Kulturlandschaft*. Verlag C.H. Beck, München 2003
- [3] Mannoni, T. (1997). *Il problema complesso delle murature storiche in pietra*, in *Archeologia dell'architettura*, numero II, Firenze: All'insegna del giglio.
- [4] Foppoli, D. (2019). *Le Costruzioni in Pietra a Secco nel Paesaggio Culturale Valtellinese*. Tirano, Notiziario Istituto Archeologico Valtellinese n. 17, Sondrio 2019.
- [5] Bretto, G. (2018). L'esperienza Ossolana ed il contesto internazionale. Tecnologia e lessico della pietra a secco. In *Paesaggi Terrazzati: Scelte per il Futuro* (pp. 317-326). Regione del Veneto.
- [6] Armanasco A., Foppoli, D. (2016). Diagnostic tests vs structural models: the utility of the comparison. *Proceedings of 11th International Conference on non-destructive investigation for the diagnostic and conservation of cultural heritage (Art'14) Madrid*
- [7] Ministero Infrastrutture e Trasporti. (2011). *Linee Guida per la valutazione e riduzione del rischio sismico del patrimonio culturale con riferimento alle norme tecniche* (Guidelines for the Evaluation and Reduction of seismic Hazard for Cultural Heritage Buildings)
- [8] Armanasco A., Foppoli D. (2014), Diagnostic tests vs structural models: the utility of the comparison, *Proceedings of 11th International conference on non-destructive investigations and microanalysis for the diagnostics and conservation of cultural and environmental heritage (Art'14)*. Madrid
- [9] Avila L., Vasconcelos G., Lourenço P. B. (2018), *Experimental seismic performance assessment of asymmetric masonry buildings*, *Engineering Structures*, Volume 155, pp. 298-314
- [10] Binda L., Cantini L., Cardani G., Saisi A., Tiraboschi C. (2007) *Use of Flat-Jack and sonic tests for the qualification of historic masonry*. In: 10th North American masonry conference. St. Luis, Missouri, USA
- [11] Podestà s., Scandolo L., Brignola A. (2013). Prove soniche per la caratterizzazione della monoliticità trasversale di pannelli murari. *ReLUIS-DPC 2010 2013. ReLUIS*
- [12] Jurina, L. (2007). *La caratterizzazione meccanica delle murature parte prima: prove penetrometriche*. Politecnico di Milano – Dipartimento di Ingegneria Strutturale.

SUMMARY

PRESENTED SESSIONS

Conservation of 20th c. architectural heritage	47
History of construction and building technology.....	200
Inspection methods, non-destructive techniques and laboratory testing.....	481
Interdisciplinary projects and case studies	873
Management of heritage structures and conservation strategies	1514
Numerical modeling and structural analysis.....	1675
Repair and strengthening strategies and techniques.....	2439
Resilience of historic areas to climate change and hazard events	2746
Seismic analysis and retrofit	2846
Structural health monitoring.....	3206
Vulnerability and risk analysis	3390