



# Statistical Characterization of Heterogeneous Dissolution Rates of Calcite from In situ and Real-Time AFM Imaging

Martina Siena<sup>1</sup> · Gianlorenzo Bussetti<sup>2</sup> · Chiara Recalcati<sup>1</sup> · Monica Riva<sup>1</sup> · Lamberto Duò<sup>2</sup> · Alberto Guadagnini<sup>1</sup>

Received: 13 February 2021 / Accepted: 21 May 2021 / Published online: 20 June 2021  
© The Author(s) 2021

## Abstract

The evolution of the surface topography of a calcite crystal subject to dissolution is documented through in situ real-time imaging obtained via atomic force microscopy (AFM). The dissolution process takes place by exposing the crystal surface to deionized water. AFM data allow detection of nucleation and expansion of mono- and multilayer rhombic etch pits and are employed to estimate the spreading rate of these structures. Spatially heterogeneous distributions of local dissolution rate are evaluated from the difference between topographic measurements taken at prescribed time intervals. We rest on a stochastic framework of analysis viewing the dissolution rate as a generalized sub-Gaussian (GSG) spatially correlated random process. Our analysis yields: (i) a quantitative assessment of the temporal evolution of the statistics of the dissolution rates as well as their spatial increments; (ii) a characterization of the degree of spatial correlation of dissolution rates and of the way this is linked to the various mechanisms involved in the dissolution process and highlighted through the experimental evidences. Our results indicate that the parameters driving the statistics of the GSG distribution and the spreading rate of the multilayer pits display a similar trend in time, thus suggesting that the evolution of these structures imprints the statistical features of local dissolution rates.

## Article Highlights

- We investigate dynamics of dissolution patterns on a calcite crystal in contact with deionized water via AFM imaging
- Temporal behavior of parameters of our statistical model is consistent with surface pattern evolution
- A nested model for the spatial correlation of rates embeds multiple mechanisms driving dissolution rate.

**Keywords** Calcite · Atomic force microscopy · Dissolution rate heterogeneity · Stochastic modeling · Spatial correlation

---

✉ Martina Siena  
martina.siena@polimi.it

<sup>1</sup> Department of Civil and Environmental Engineering, Politecnico Di Milano, Milano, Italy

<sup>2</sup> Department of Physics, Politecnico Di Milano, Milano, Italy

## 1 Introduction

Proper assessment of reactive processes at solid–liquid interfaces is of critical importance for the characterization of flow and transport in porous media, as these drive possible alterations of key physical attributes of the hosting formation, such as porosity, permeability, or storage (Hommel et al. 2018). As such, detailed knowledge of dissolution/precipitation reaction kinetics has relevant implications in several industrial and environmental contexts including, e.g., aquifer contamination (Bianchi Janetti et al. 2013), geothermal energy exploitation (Erol et al. 2019), enhanced (conventional and unconventional) management of subsurface energy resources (Khather et al. 2020), or geological storage of CO<sub>2</sub> (Daval 2018). Calcite has been a major target of kinetic characterization studies, due to its widespread presence in geological environments and its affinity to incorporate trace elements in the solution, acting as a potential sink for heavy metals and pollutants (Heberling et al. 2014; Renard et al. 2019).

A bulk powder experiment is typically considered a pillar for the estimation of dissolution rates (Luttge et al. 2013), which are inferred by monitoring changes in dissolved solute concentrations. While these experiments are simple and characterized by a remarkable level of reproducibility, an intrinsic difficulty is related to the observation that measured changes in mass must be normalized by the powder surface area to obtain proper units of rate, i.e., mass per unit area per unit time. Large discrepancies between dissolution rates evaluated under identical laboratory conditions are documented (Arvidson et al. 2003) and are attributed to the way the powder surface area is computed and to the actual portion of the mineral surface that is available for the reaction (Luttge et al. 2013; Luttge 2005).

The use of high-resolution imaging techniques such as vertical scanning interferometry (VSI) and atomic force microscopy (AFM) enables the observation of the surface topography of dissolving minerals at the molecular level. These techniques are contributing to enhance our knowledge of the main mechanisms driving reactions at fluid–solid interfaces and have been extensively employed for the investigation of calcite dissolution in aqueous solution (see, e.g., Anabaraonye et al. 2019; Bibi et al. 2018; Bouissonnié et al. 2018; Fischer et al. 2012; Smith et al. 2013 for VSI; Dong et al. 2020; Offeddu et al. 2014; Renard et al. 2019; Renard et al. 2015; Teng 2004; Xu et al. 2010 for AFM). While AFM is more limited in terms of observation window as compared to VSI (maximum size being in the order of 10 and 100 μm, respectively), it is characterized by an enhanced level of lateral resolution (minimum pixel size being in the order of 10 and 100 nm, for AFM and VSI, respectively) and is more suited for in situ and real-time detection of surface topography and atomic-resolution forces.

Measurements of average surface retreat with respect to a local reference (i.e., a region covered by a non-reactive mask embedded on the sample) can be employed to estimate a mean dissolution rate,  $\langle R \rangle$  [mol m<sup>-2</sup> s<sup>-1</sup>], as

$$\langle R \rangle = \frac{1}{V_m} \frac{\langle \Delta h \rangle}{\Delta t} \quad (1)$$

where  $\Delta h$  [m] is the surface retreat evaluated with respect to the reference and  $\langle \rangle$  denotes spatial averaging;  $\Delta t$  [s] is the duration of the experiment; and  $V_m$  [m<sup>3</sup> mol<sup>-1</sup>] is calcite molar volume. This approach enables one to overcome difficulties/uncertainties typical of the bulk powder approach and associated with the need to estimating the surface area. However, relying on average quantities of the kind associated with Eq. 1 leads to a complete loss of information about the often marked degree of heterogeneity of local surface

topography (and hence rate) values that is revealed by high-resolution imaging techniques. Heterogeneities at the microscopic level result from local inhomogeneities and defects on the crystal structure. These are usually regarded as sources of intrinsic variability and lead to uneven distributions of surface free energy (i.e., cohesive energy at the calcite surface). Their impact on the dissolution process has been identified as the ultimate cause of the wide range of average rate estimates under given experimental conditions (Luttge et al. 2013).

Since the density and the distribution of defects on the mineral surface displays traits which are typical of random processes, there is a growing need for a change in perspective when developing experimentally driven interpretive models of such processes. A shift of paradigm towards the reliance on a stochastic approach has been encouraged by several authors (Fischer et al. 2014, 2012; Luttge et al. 2019, 2013) to capture the spatial variability of dissolution rates. Fischer et al. (2012) introduced the concept of rate spectra (i.e., the frequency distribution of local rate values in the domain) as a tool to preserve the variety of surface features contributing to the overall dissolution process. In this sense, these authors interpret the ensuing frequency distribution of rates as a convolution of modes, each representing a basic kinetic component. This aspect has been further investigated by other studies where rate spectra are extrapolated from (i) AFM in situ imaging of surface topography on dissolving calcite in limestone pores (Levenson and Emmanuel 2013) and dolostone (Emmanuel 2014); (ii) VSI topography data under far-from-equilibrium conditions taken in situ and in real time on the surface of a calcite crystal (Bibi et al. 2018) or ex situ on a calcite-cemented sandstone (Trindade Pedrosa et al. 2019); and (iii) digital holographic microscopy (DHM) for in situ topography acquisitions on a calcite crystal in contact with deionized water (Brand et al. 2017).

First attempts at identifying a suitable model for the interpretation of rate spectra rely on the generalized extreme value (GEV) distribution (Brand et al. 2017; Emmanuel 2014). Brand et al. (2017) highlight a dependency between the distribution parameters and the temporal window across which dissolution rates are evaluated. Pollet-Villard et al. (2016) and Siena et al. (2020) show examples of the application of geostatistics for the study of the spatial heterogeneity of reactive processes data at the microscopic level. Pollet-Villard et al. (2016) rely on common variogram analyses of topography data measured experimentally through AFM imaging of a dissolving orthoclase surface in far-from-equilibrium conditions. Siena et al. (2020) interpret the statistics of VSI-based measurements of calcite surface topography subject to dissolution in close-to-equilibrium conditions within the recently developed statistical framework of analysis relying on a generalized sub-Gaussian (GSG) formulation (Riva et al. 2015). The latter constitutes a modeling approach which enables one to characterize jointly the statistical behavior of a given (spatially heterogeneous) quantity,  $Y(\mathbf{x})$  ( $\mathbf{x}$  denoting a vector of spatial coordinates), and its spatial (or temporal) increments,  $\Delta Y(\mathbf{s}) = Y(\mathbf{x} + \mathbf{s}) - Y(\mathbf{x})$  evaluated at multiple separation distances (or lags),  $\mathbf{s}$ . This approach has been shown to fully embed statistical features which have been documented by observations of a broad spectrum of hydrogeological variables [e.g., porosity (Guadagnini et al. 2014; Painter 1996; Riva et al. 2015), permeability (Painter 1996; Riva et al. 2013b, a) or hydraulic conductivity (Guadagnini et al. 2013; Liu and Molz 1997; Meerschaert 2004)] and resulting in a clear scale-dependent behavior of the sample distributions (and associated statistical moments) of spatial increments (see also Sect. 2.4 for additional details).

Here, we aim at characterizing the spatial variability of the dissolution rate inferred from in situ and real-time AFM imaging of a calcite sample, cleaved along the {104} surface plane (where indices 104 characterize the plane orientation, curly brackets

denoting inclusion of all planar surfaces that, due to the symmetry of the crystal lattice, are equivalent to plane (104)), in contact with deionized water. The reaction is initially in far-from-equilibrium conditions. As the fluid in contact with the sample is static, the degree of saturation of the solution with respect to the dissolved phase progressively increases within a boundary layer at the fluid/solid interface. Thus, a transition from a surface-dominated to a diffusion-dominated reaction takes place (see also, e.g., Renard et al. 2019). Our main goal is to investigate the effects of this transition on surface topography patterns driven by dissolution and on the degree of spatial heterogeneity of the associated rate within a temporal interval immediately after the renewal of the solution in contact with the sample in the AFM cell. The analysis rests on (i) the evaluation of the statistical behavior of the observed local rate values and of the associated spatial increments and (ii) the identification of quantitative metrics to assess the temporal evolution of rate heterogeneity.

## 2 Materials and Methods

### 2.1 Calcite Dissolution Mechanisms

Reactivity of calcite {104} surface is of primary interest in natural settings. On this plane, calcite exhibits steps oriented along  $[441]$  and  $[48\bar{1}]$  crystallographic directions (where the overbar represents a negative crystallographic index) and is characterized by a rhombohedral symmetry. Two parallel edges of an etch pit form differing angles with the terrace surface, indicated as acute ( $[\bar{4}41]_-$  and  $[48\bar{1}]_-$ ) and obtuse ( $[\bar{4}41]_+$  and  $[48\bar{1}]_+$ ) steps, respectively. The difference in atomic configurations of these steps leads to a distinct material removal rate, dissolution of acute steps being slower than the one associated with obtuse steps (Harstad and Stipp 2007). Calcite dissolution can take place by progressive retreat of preexisting steps or etch pit nucleation. The latter can be originated from either surface defects or can occur randomly on a flat terrace. Spontaneous pit nucleation requires a higher amount of energy with respect to the defect-assisted process, which, in turn, requires a higher energy than step retreat. As a consequence, the prevailing dissolution mode is directly related to the distance of the reaction from equilibrium, as quantified through the saturation state,  $\Omega = \text{IAP}/K_{\text{sp}}$ , where  $\text{IAP} = a_{\text{Ca}^{2+}}a_{\text{CO}_3^{2-}}$  is the ion activity product for calcite and  $K_{\text{sp}} = a_{\text{Ca}^{2+},\text{eq}}a_{\text{CO}_3^{2-},\text{eq}}$  is the solubility product constant, obtained as the product of the species activities at equilibrium. By definition,  $\Omega$  approaches unity as the system tends to thermodynamic equilibrium. As suggested by several authors (Bouissonnié et al. 2018; Kristensen et al. 2004; Teng 2004), at extreme undersaturation conditions ( $\Omega < 0.007$ ) the chemical potential is such that the energy barrier associated with spontaneous pits nucleation can be overcome and shallow pits (having depths of a single layer) are allowed to form at random locations on the terraces. For a lower degree of undersaturation, i.e.,  $0.007 < \Omega < 0.41 - 0.54$ , the nucleation of etch pits can be originated only at locations corresponding to linear defects in the crystal lattice, and dissolution takes place both by nucleation at these locations and by step retreat. Within this saturation range, a transition from rhombic to triangular pit shape is documented at  $\Omega \approx 0.1 - 0.2$ , as a consequence of progressive roundings of the obtuse-obtuse corners (Harstad and Stipp 2007). Dissolution takes place by means of step retreat under close-to-equilibrium conditions (i.e., for  $\Omega > 0.41 - 0.54$ ), the terraces not being involved in the reaction.

## 2.2 Experimental Settings

A calcite sample has been prepared immediately before the experiment session by cleaving a crystal of Iceland spar (Mexico), pressing along the {104} plane with a razor blade. The sample (having size  $\sim 5 \times 3 \times 1 \text{ mm}^3$ ) is secured on a slide and fluxed with nitrogen, to remove possible residues resulting from the cleavage operation. A Viton O-ring is mounted on the AFM support to seal the volume of the fluid cell, the latter being open to air and centered about the sample. Topography measurements are acquired with an AFM (Keysight 5500 apparatus) in contact mode. The tips (Bruker; model: RESPA-40) used in the study are made of Si and are specifically designed for contact mode acquisition. The cantilever ( $k=5 \text{ N/m}$ ) has an Al coating to enhance the laser back reflection. A constant scan frequency (at 2.2 Hz) is employed to cover an area of  $6 \times 6 \text{ }\mu\text{m}^2$  discretized according to a  $512 \times 512$  grid (pixel size,  $dl=11.7 \text{ nm}$ ). Only top-down scans are considered for our analyses. The dissolution process is started by exposing the crystal surface to deionized MilliQ water ( $18.2 \text{ M}\Omega \cdot \text{cm}$ ) for a preliminary period of 1 h and 30 min. The volume of fluid enclosed in the cell ( $\sim 2 \text{ ml}$ ) is connected to a system of syringes allowing replacement of the solution in contact with the sample. The sequence of measurements analyzed starts after the renewal of the fluid volume in the cell and spans a temporal window of width  $T=30 \text{ min}$ , the acquired images being spaced by a uniform time step  $\Delta t = 5 \text{ min}$ .

Real-time AFM imaging during calcite dissolution is demanding and requires performing several experiments for the identification of the ideal setup. A proper calibration of the AFM scanning rate has to be performed upon considering a tradeoff between the quality of the acquisition and the dissolution time scale. We performed 10 experiments on diverse samples, all cleaved from the same block of Iceland spar. We observed a consistent evolution of the surface patterns in all of these experiments (not shown). The collection of topography data included in this study enables us to (i) capture the evolution of multiple surface features observed in all of the experiments and (ii) obtain an excellent microscope stability across the whole temporal window investigated.

In the AFM system adopted, the piezo-scan in the  $x$ - $y$  plane is associated with the displacement of the tip and not of the sample. This element, together with the small size of the scanned area and a preliminary warm-up phase of about 1 h prior to starting image acquisition, contributed to reduce horizontal drifts to negligible values.

## 2.3 Surface Topography Data and Spatial Distributions of Rate

The spatial distribution of surface elevations at a given time  $t$ ,  $z(x, y, t)$ , is expressed as the sum of an average value,  $\langle z(t) \rangle$ , independent of location  $(x, y)$ , and a local zero-mean fluctuation,  $z'(x, y, t)$ . Recalling Eq. 1, the spatial distribution of dissolution rates can be obtained as:

$$\begin{aligned} R(x, y, t) &= \frac{1}{V_m} \frac{z(x, y, t) - z(x, y, t - \Delta t)}{\Delta t} \\ &= \frac{1}{V_m \Delta t} \{ [\langle z(t) \rangle - \langle z(t - \Delta t) \rangle] + [z'(x, y, t) - z'(x, y, t - \Delta t)] \} \\ &= \langle R(t) \rangle + R'(x, y, t). \end{aligned} \quad (2)$$

The term  $\langle R(t) \rangle$  represents a uniform (average, global) dissolution rate on the whole surface and can be evaluated only through knowledge of  $\langle z(t) \rangle$  and  $\langle z(t - \Delta t) \rangle$  or having at our disposal an inert (i.e., non-reactive) region on the surface, whose elevation can be used as a common reference for all times; the second term,  $R'(x, y, t)$ , is informative about the spatial variability of the rates.

AFM yields topography data with high vertical resolution (in the order of 0.1 nm). As reported by Marinello et al. (2010), a preliminary detrend on data is often required, to remove spurious contributions, such as the slope of the sample support, which may be non-negligible at the considered level of resolution, or bow distortion due to the bending of the piezo-tube of the AFM scanner, which might result in an artificial curvature of the surface. The actual surface elevation,  $z$ , can be derived from data, according to  $z(x, y, t) = z_{meas}(x, y, t) - S(x, y, t)$ ,  $z_{meas}$  and  $S$  being the measured value and the overall distortion, respectively.

In our experiments, the entire surface of the crystal is in contact with the liquid in the cell and is therefore prone to reaction. The overall distortion can be inferred only by fitting the measured data with a given polynomial function. Hence, the ensuing trend,  $T(x, y, t)$ , necessarily includes also the average elevation, i.e.,  $T(x, y, t) = S(x, y, t) + \langle z(t) \rangle$ . This, in turn, implies that the detrended data:

$$z_{meas}(x, y, t) - T(x, y, t) = z_{meas}(x, y, t) - S(x, y, t) - \langle z(t) \rangle = z(x, y, t) - \langle z(t) \rangle. \tag{3}$$

correspond to  $\dot{z}'(x, y, t)$ . Since we lose all information about  $\langle z(t) \rangle$ , the spatial map of rates obtained from the difference of the topography measurements at two diverse observation times corresponds to the dissolution rate fluctuations:

$$R'(x, y, t) = \frac{1}{V_m} \frac{\dot{z}'(x, y, t) - \dot{z}'(x, y, t - \Delta t)}{\Delta t} \tag{4}$$

which is then subject to our statistical analyses. Even as this does not enable us to obtain absolute rate estimates, it provides insights on their characteristic spatial variability.

### 2.4 Statistical Modeling Framework

We consider a given quantity of interest,  $Y(\mathbf{x})$ , to be expressed as the sum of an ensemble mean,  $\langle Y \rangle$ , and a local zero-mean fluctuation,  $Y'(\mathbf{x})$ . Here, we rest on the generalized sub-Gaussian (GSG) model proposed by (Riva et al. 2015) to capture the scaling features exhibited by the probability distributions of incremental data,  $\Delta Y(\mathbf{s}) = Y(\mathbf{x} + \mathbf{s}) - Y(\mathbf{x})$ . The latter have been shown to be characterized by sample distributions whose tails and peak tend to become, respectively, heavier and sharper as the lag,  $\mathbf{s}$ , decreases (see, e.g., Guadagnini et al. 2018 and references therein). We recall that the concepts of peakedness and tailedness are both typically related to the heaviness of the distribution tails, a heavy-tailed pdf being a distribution whose tails are not bounded by the exponential pdf (the opposite holds for fat-tailed pdfs). Here, we illustrate the key analytical expressions of the GSG theoretical framework, the complete set of details about their derivation being available in Riva et al. (2015).

The GSG model considers:

$$Y'(\mathbf{x}) = U(\mathbf{x})G(\mathbf{x}) \tag{5}$$

$G(\mathbf{x})$  and  $U(\mathbf{x})$  being a zero-mean (typically correlated) Gaussian random field and a nonnegative subordinator independent of  $G$ . The Gaussian field is characterized by a scale parameter,  $\sigma_G$ , i.e., the standard deviation of  $G$ , and a correlation function,  $\rho_G$ , that typically decreases as the separation distance between two points increases. Consistent with Riva et al. (2015) and Siena et al. (2019), we consider  $U(\mathbf{x})$  to be characterized by a log-normal distribution:

$$f_{U_i}(u_i) = \frac{e^{-\frac{(\ln u_i)^2}{2(2-\alpha)^2}}}{\sqrt{2\pi u_i(2-\alpha)}}. \tag{6}$$

$\alpha < 2$  being the shape parameter. The resulting distributional form for  $Y'(\mathbf{x})$  corresponds to a normal-log-normal (NLN) model:

$$f_{Y'}(y) = \frac{1}{2\pi(2-\alpha)} \int_0^\infty e^{-\frac{1}{2} \left[ \left( \frac{\ln(u/\sigma_G)}{2-\alpha} \right)^2 + \left( \frac{y}{u} \right)^2 \right]} \frac{du}{u^2}. \tag{7}$$

with second and fourth statistical moments expressed as:

$$\langle Y'^2 \rangle = \sigma_G^2 e^{2(2-\alpha)^2}. \tag{8}$$

$$\langle Y'^4 \rangle = 3\sigma_G^4 e^{8(2-\alpha)^2}. \tag{9}$$

The standardized kurtosis, which provides a measure of the degree of sharpness of the distribution peak, can be expressed as:

$$\kappa_{Y'} = \frac{\langle Y'^4 \rangle}{\langle Y'^2 \rangle^2} = 3e^{4(2-\alpha)^2}. \tag{10}$$

Hence, the probability density function (pdf) of  $Y'$  is leptokurtic for  $\alpha < 2$  and tends to a Gaussian pdf (with  $\kappa_{Y'} = 3$ ) for  $\alpha \rightarrow 2$ .

The pdf of spatial increments,  $\Delta Y(\mathbf{s})$ , at lag  $\mathbf{s}$  is:

$$f_{\Delta Y}(\Delta y) = \frac{\sqrt{\pi/2}}{2\pi^2(2-\alpha)^2} \int_0^\infty \int_0^\infty e^{-\frac{1}{2} \left[ \frac{1}{(2-\alpha)^2} \left( \ln^2 \frac{u_1}{\sigma_G} + \ln^2 \frac{u_2}{\sigma_G} \right) + \frac{\Delta y^2}{r^2} \right]} \frac{du_2 du_1}{u_2 u_1 r}. \tag{11}$$

with  $r = \sqrt{u_1^2 + u_2^2 - 2\rho_G u_1 u_2}$ .

Second- and fourth-order moments and standardized kurtosis are defined for each lag as:

$$\langle \Delta Y^2 \rangle = 2\sigma_G^2 e^{(2-\alpha)^2} \left[ e^{(2-\alpha)^2} - \rho_G \right] \tag{12}$$

$$\langle \Delta Y^4 \rangle = 6\sigma_G^4 e^{4(2-\alpha)^2} \left[ 1 + e^{4(2-\alpha)^2} - 4e^{(2-\alpha)^2} \rho_G + 2\rho_G^2 \right] \tag{13}$$

$$\kappa_{\Delta Y} = \frac{\langle \Delta Y^4 \rangle}{\langle \Delta Y^2 \rangle^2} = 3e^{2(2-\alpha)^2} \left\{ 1 + \frac{1}{2} \left( \frac{e^{2(2-\alpha)^2} - 1}{e^{(2-\alpha)^2} - \rho_G} \right)^2 \right\}. \quad (14)$$

It can be noted that  $\kappa_{\Delta Y}$  depends on the lag through the correlation function of  $G$ , i.e.,  $\rho_G$ , yielding pdfs of incremental data that scale with lag. In summary, the GSG model is fully characterized by (i) a shape parameter  $\alpha$ , controlling the peakedness (and tailedness) of the distribution, (ii) a scale parameter  $\sigma_G$ , related to the width of the distribution, and (iii) a correlation parameter,  $\rho_G$ , which is responsible of the scaling nature of increment pdfs.

Here, we set  $Y' = R'(x, y, t)$  and provide estimates of the parameters of the GSG model to interpret the dissolution rate datasets at each given time  $t$ . We follow Riva et al. (2015) and perform model parameter estimation through the method of moments upon relying jointly on sample statistics of both  $R'$  and  $\Delta R(s)$  data. Replacing  $\langle Y'^2 \rangle$ ,  $\langle \Delta Y^2 \rangle$ , and  $\langle \Delta Y^4 \rangle$  in Eqs. 8, 12, and 13 with their counterparts,  $M_2^{R'}$ ,  $M_2^{\Delta R}$ , and  $M_4^{\Delta R}$  inferred from the available data yields:

$$\begin{cases} M_2^{R'} = \sigma_G^2 e^{2(2-\alpha)^2} \\ M_2^{\Delta R} = 2\sigma_G^2 e^{(2-\alpha)^2} [e^{(2-\alpha)^2} - \rho_G] \\ M_4^{\Delta R} = 6\sigma_G^4 e^{4(2-\alpha)^2} [1 + e^{4(2-\alpha)^2} - 4e^{(2-\alpha)^2} \rho_G + 2\rho_G^2] \end{cases}. \quad (15)$$

Note that values of the scale and shape parameters are expected to be (approximately) constant with  $s$ , the Gaussian field correlation decreasing as  $s$  increases. We assess the temporal evolution of the strength of the spatial correlation of reaction rates upon relying on the estimates of  $\rho_G$  as a function of the lag and evaluating the key parameters of suitable theoretical models employed to interpret these.

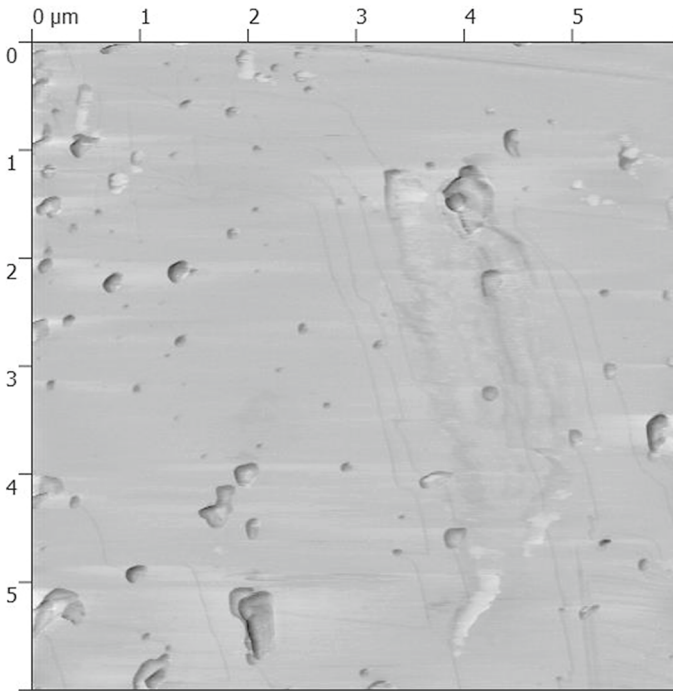
### 3 Results

#### 3.1 Evolution of Calcite Dissolution Patterns

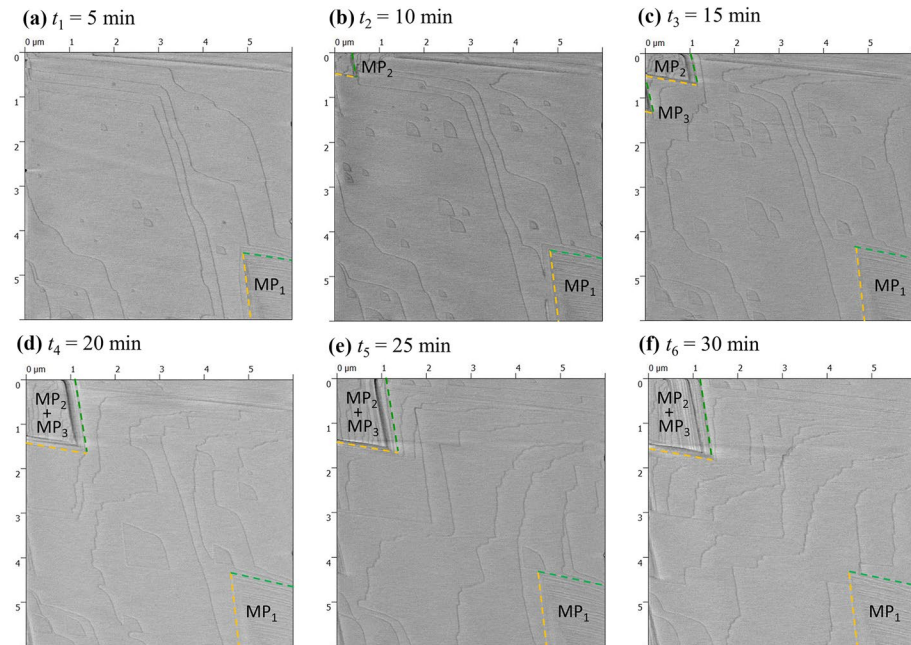
Figure 1 depicts the AFM (friction) image acquired after a preliminary exposure of the calcite surface to MilliQ water for 1 h and 30 min. The observation time associated with Fig. 1 is hereafter denoted as  $t = t_0$  and corresponds to the time immediately before the renewal of the solution in contact with the mineral surface. The most evident feature is the presence of precipitates superimposed to the crystallographic steps that can be seen in the background. The formation of precipitates is compatible with the development of a supersaturated zone within a boundary layer at the solid/fluid interface (Renard et al. 2019).

Figure 2 collects the images acquired at a uniform time step,  $\Delta t = 5$  min. Each plot is associated with the time  $t_i$  ( $i = 1, \dots, 6$ ) elapsed between the fluid replacement operation and the end of the acquisition of the  $i$ -th image. The key features associated with these results are illustrated in the following:





**Fig. 1** In situ AFM friction image acquired on a  $6\ \mu\text{m} \times 6\ \mu\text{m}$  portion of the calcite sample surface at  $t = t_0$ , after 1 h and 30 min of contact with stagnant deionized (MilliQ) water



**Fig. 2** In situ AFM friction images acquired on a  $6\ \mu\text{m} \times 6\ \mu\text{m}$  area on the calcite sample surface at regular time intervals of 5 min after  $t = t_0$ . The edges of the multilayer etch pits ( $MP_1$ ,  $MP_2$ , and  $MP_3$ ) are highlighted, green and yellow lines representing the obtuse and acute steps, respectively

- At time  $t_1=5$  min (Fig. 2a), the precipitates observed at time  $t_0$  have been dissolved and the underlying steps of the crystal become clearly visible. Several rhombic monolayer pits (mPs), whose appearance is typically associated with high undersaturation, begin to develop (with particular reference to the wider terraces). The edges of a large multilayer pit (denoted as  $MP_1$ ) are visible on the lower-right corner of the image.
- Time  $t_2=10$  min (Fig. 2b) is characterized by an increased density of mPs that have also widened with respect to  $t_1$ , new mPs nucleating at seemingly random locations and in the center of the existing ones. A new multilayer pit (denoted as  $MP_2$ ) starts to develop at the top left corner. Terrace steps on the surface appear to be stable.
- No newly formed mPs are detectable at time  $t_3=15$  min (Fig. 2c). The existing ones widen and coalesce, their shape mutating from rhombic to triangular. The  $[441]_-$  acute step of  $MP_1$  is expanding slowly, whereas  $MP_2$  has spread considerably along the  $[481]_+$  obtuse step direction and the margin of a third MP ( $MP_3$ ) is seen to invade the domain of investigation right below  $MP_2$ . The step profiles close to these two pits begin to evolve.
- Most of the mPs are no longer visible at time  $t_4=20$  min (Fig. 2d), as they are essentially merged with other pits or with the edges of retreating steps. Compared to the previous image, the shape of the step profiles has changed significantly and in an irregular fashion, due to the progressive inclusion of mPs of differing sizes. The margin of a high step (visible along the top of the investigated region) seems to prevent further spreading of the obtuse step  $[481]_+$  of  $MP_2$ . The expansion of the  $[481]_+$  edge of  $MP_3$  results in the merging of this MP with  $MP_2$ .
- No isolated mPs can be seen at time  $t_5=25$  min (Fig. 2e). The spreading of MPs slows down considerably. Dissolution is basically occurring solely by step retreat.
- At time  $t_6=30$  min (Fig. 2f), no relevant differences with respect to the pattern observed at  $t_5$  can be seen, with the only exception of the evolution of the steps, the distance between neighboring ones being generally reduced.

The dissolution pattern on the crystal surface is strongly related to the driving dissolution mechanisms detailed in Sect. 2.1, these being in turn affected by the calcite concentration at the fluid/solid interface. The evolution described above is consistent with the expected temporal increase of concentration within the boundary layer. As opposed to what can be observed at  $t=t_0$  (Fig. 1), no precipitates are detected at  $t=t_6$ . This could suggest that local supersaturation of the boundary layer has not been attained yet. Otherwise, this could also be ascribed to the effect of the scanning probe on the investigated area, as the AFM tip may displace precipitates that are weakly connected to the surface (see also Guren et al. 2020, and Renard et al. 2019). Spreading of  $MP_1$  takes place only along the acute step and is characterized by a lower extent than what can be noted for  $MP_2$  and  $MP_3$ . Based on the behavior observed for  $MP_2$  at  $t_3$  and  $t_4$ , we can assume that its growth is limited by the presence of larger steps or pits, even as the overall width of our observation window does not enable us to completely verify this hypothesis.

### 3.2 Evaluation of the Pit Spreading Rate

A measure of surface reactivity is given by the spreading rate ( $v$  [nm/s]) of the etch pits. The latter can be estimated through the variation of the separation distance between opposite sides of the pit within a given time interval (Ruiz-Agudo and Putnis 2012). We rely on pairs of consecutive images and consider all isolated (i.e., not aggregated)

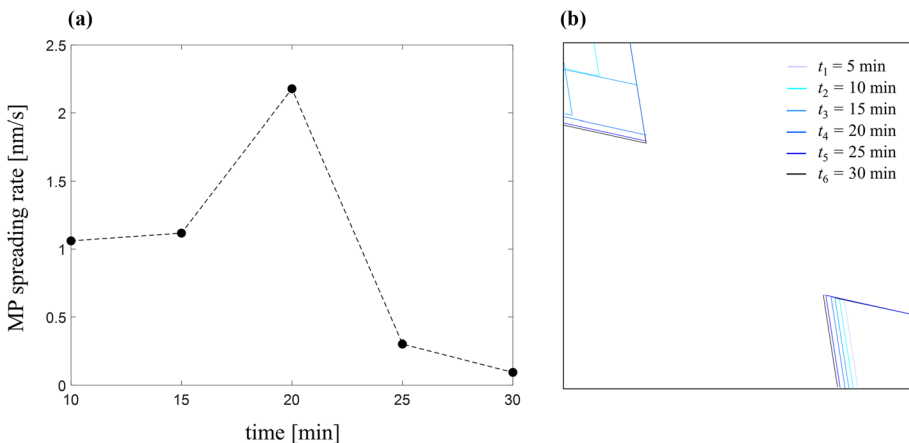
**Table 1** Mean and standard deviation of the spreading rate  $v$  evaluated over all isolated monolayer pits (mPs) at various times

Time (min)	10	15	20
Number of mPs	17	15	4
$v$ (mean) [nm/s]	0.44	0.41	0.27
$v$ (std dev) [nm/s]	0.11	0.08	0.05

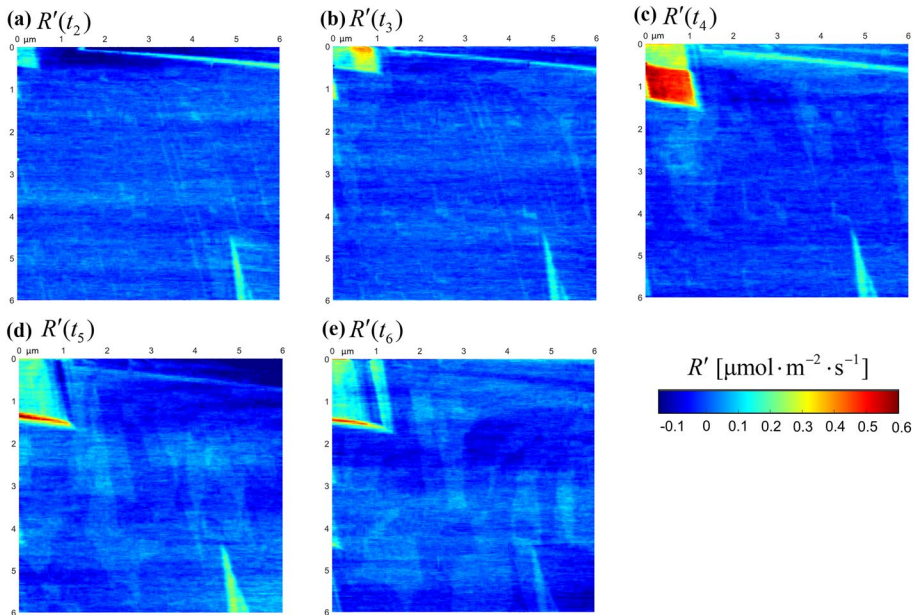
No isolated mPs can be found in our experiments for  $t > 20$  min

monolayer pits to obtain an average value,  $\bar{v}$ , and the associated standard deviation. Table 1 lists the results of the evaluation of the spreading rate. As highlighted in Fig. 2, most of the mPs are short-lived. As such, the number of elements upon which  $\bar{v}$  can be evaluated decreases sharply over time, none of these structures being detected for  $t > 20$  min. The results listed in Table 1 show that the mean and standard deviation of  $v$  monotonically decrease in time, the observed values being consistent with those documented in previous experiments concerning calcite {104} and MilliQ water (Guren et al. 2020; Harstad and Stipp 2007).

The rate of expansion of multilayer pits can be used as an additional element according to which one can estimate the spreading rate,  $v$ , on the investigated surface. Even as they do not fall entirely within our observation domain (Fig. 2), these structures are more persistent than their mPs counterparts, thus enabling one to obtain at least a rough estimate of step retreat velocity throughout the whole temporal window of the experiments. The retreat velocity evaluated by considering the spreading rates of acute and obtuse edges (denoted with yellow and green lines in Fig. 2, respectively) and then averaging these over the three MP is depicted as a function of time in Fig. 3a. Figure 3b depicts the location of the MP margins at various observation times. As opposed to what observed for the shallow pits, the trend observed for these rates is not monotonically decreasing. It increases sharply between  $t = 10$  and 20 min, while decreasing abruptly for longer times. Consistent with the findings of Harstad and Stipp (2007), MP spreading rates are considerably larger than those listed in Table 1 for mP spreading rates.



**Fig. 3** **a** Spreading rate evaluated on the basis of the displacements (inferred from the locations of the MP margins in **b**) of acute and obtuse steps of multilayer pits (MPs) at all times

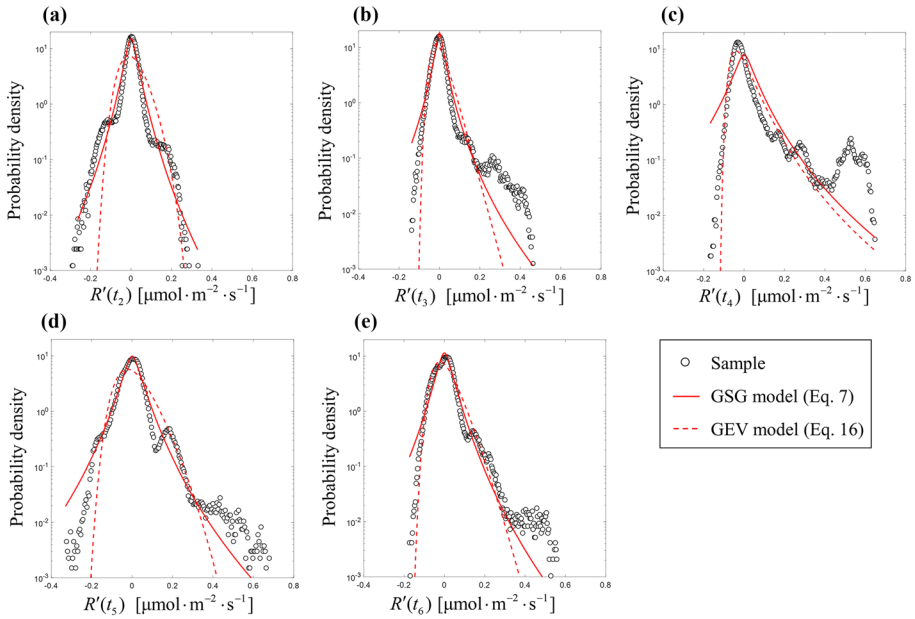


**Fig. 4** Color maps of dissolution rates,  $R'(t_j)$ , evaluated for each consecutive pair of topography images (taken at uniform temporal intervals  $\Delta t = 5$  min)

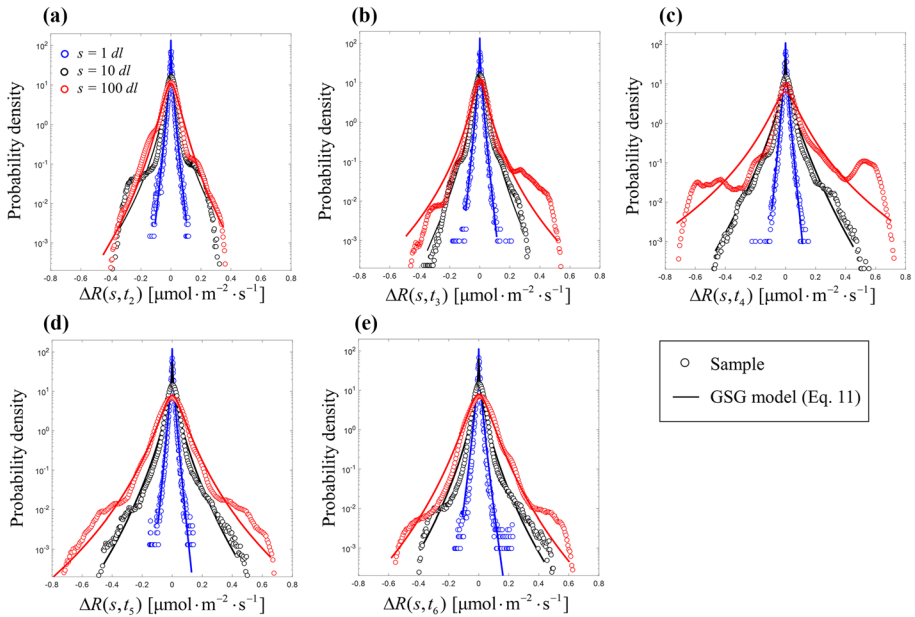
### 3.3 Analysis and Statistical Modeling of Dissolution Rates

Figure 4 depicts spatial maps of rates  $R'(t_j) = \frac{1}{V_m} \frac{z'(x,y,t_j) - z'(x,y,t_j - \Delta t)}{\Delta t}$  (see Eq. 4) for all consecutive pairs of topography images. Analysis of these results clearly highlights that (i) values of  $R'$  associated with the MP spreading are much larger than their counterparts related to mPs expansion and step retreat across the (overall) flat terrace in between the MPs (see in particular Fig. 4c); and (ii) the largest support spanned by sample pdfs of rates is observed at an intermediate time, i.e., for  $R'(t_4)$ . Sample probability density functions (pdfs) of  $R'$  for each of the sub-plots of Fig. 4 are depicted in Fig. 5. These pdfs exhibit common features, which have been detected also in previous studies (Bibi et al. 2018; Trindade Pedrosa et al. 2019). These include (i) the presence of a dominant peak, eventually accompanied by multiple local peaks and (ii) a positive skewness. Consistent with our discussion about Fig. 4, values of standard deviation tend to increase from  $t_2$  to  $t_4$  and then decrease for longer times.

As detailed in Sect. 2.4, we also consider the statistical characterization of the spatial increments,  $\Delta R$ , which we evaluate at various separation distances between pairs of locations. For the purpose of our analysis, we consider omnidirectional increments, i.e., we set  $s = |s|$ , deferring the analysis of possible anisotropic behaviors to future studies. Figure 6 depicts sample pdfs of incremental data for three selected lags ( $s = 1, 10,$  and  $100$  dl). These distributions are generally more symmetric than their counterparts associated with  $R'$  (Fig. 5). It is clear that the shape of these pdfs varies with separation distance, their peak becoming sharper with decreasing lag, a feature which is common



**Fig. 5** Sample pdfs (symbols) associated with the five reaction rate datasets depicted in Fig. 4. Interpretive models based on GSG (Eq. 7) and GEV (Eq. 16) distributions are also depicted



**Fig. 6** Sample pdfs (symbols) of rate increments,  $\Delta R(s, t_j)$  ( $j=2, \dots, 6$ ) evaluated at three selected lags,  $s$ . Interpretive models based on GSG distributions for incremental data (Eq. 11) are also depicted

to corresponding results associated with a variety of other Earth science variables (see, e.g., Guadagnini et al. 2018; Siena et al. 2020 and references therein).

All distributions are persistently leptokurtic, with  $\kappa_{\Delta y} \gg 3$  even at large lags ( $s = 100$  dl). The application of the method of moments (Eq. 15) yields estimates of the GSG model parameters that best represent the statistics associated with the distributions of the rates jointly with those of their increments. As expected, the estimated shape and scale parameters do not change significantly with the lag (not shown). The results related to the theoretical formulations of the GSG pdfs of  $R'$  and  $\Delta R(s)$  with parameters estimated through the method of moments show a remarkable agreement with their sample counterparts (see Figs. 5 and 6, respectively). As an additional element to support the analysis, we note that, while the method of moments is simple and straightforward in its application, parameter estimates obtained through maximum likelihood (ML) applied on  $R'$  and  $\Delta R(s)$  data provide results of similar quality (not shown).

Results obtained upon relying on a GEV model:

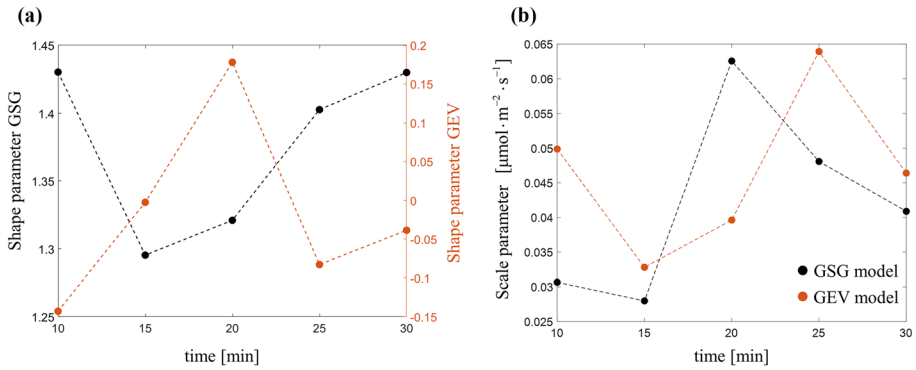
$$f_{y'}^{\text{GEV}}(y) = \frac{1}{\sigma} \exp\left(-\left[1 + k\left(\frac{y - \mu}{\sigma}\right)\right]^{-\frac{1}{k}}\right) \left[1 + k\left(\frac{y - \mu}{\sigma}\right)\right]^{-1 - \frac{1}{k}}. \tag{16}$$

that has been adopted in previous works for the interpretation of rate spectra (Brand et al. 2017; Emmanuel 2014) are also depicted in Fig. 5 as a further term of comparison. Here,  $k$ ,  $\sigma$ , and  $\mu$  correspond to the shape, scale, and location parameter, respectively, and are estimated through a classical ML procedure. Visual inspection of Fig. 5 suggests that relying on a GEV model can provide results of similar quality to those that can be obtained through the GSG model with reference to sample pdfs of  $R'$ . Otherwise, we note that the GEV model does not include information about the statistical behavior of incremental values, a feature which is naturally embedded in the GSG framework. The Kullback–Leibler divergence (Kullback and Leibler 1951),  $D_{KL}$ , is then employed to compare quantitatively the performances of the two interpretive models. This metric can be used to measure the amount of information lost by representing the empirical distribution associated with the available data with a given theoretical model. Hence, low values of  $D_{KL}$  correspond to high degrees of similarity between sample and modeled distributions. Table 2 lists the results of this analysis, suggesting that the GSG model outperforms the GEV model for all observation times, with the exception of  $t_4 = 20$  min, where one can see that both analytical models provide a good representation of the upper tail while the GEV captures the peak of the sample pdf more closely than its GSG-based counterpart.

Figure 7 depicts the temporal behavior of estimated shape (Fig. 7a) and scale (Fig. 7b) parameters obtained for the GSG and GEV models. Shape parameters,  $\alpha$  and  $k$ , linked to the tailedness of the distributions, respectively, display a minimum and a maximum for  $t \approx 15$ – $20$  min. This pattern is consistent (for  $k$ ) with the one exhibited by the spreading rate of the MPs (Fig. 3a), the corresponding results documented for  $\alpha$  being characterized by a trough,

**Table 2** Kullback–Leibler divergence ( $D_{KL}$ ) evaluated from the comparison of sample pdfs of  $R'$  and GSG (Eq. 7) or GEV (Eq. 16) analytical models

Time	$t_2$	$t_3$	$t_4$	$t_5$	$t_6$
$D_{KL}$ sample pdf and GSG	<b>0.048</b>	<b>0.049</b>	0.331	<b>0.033</b>	<b>0.051</b>
$D_{KL}$ sample pdf and GEV	0.373	0.145	<b>0.133</b>	0.173	0.070



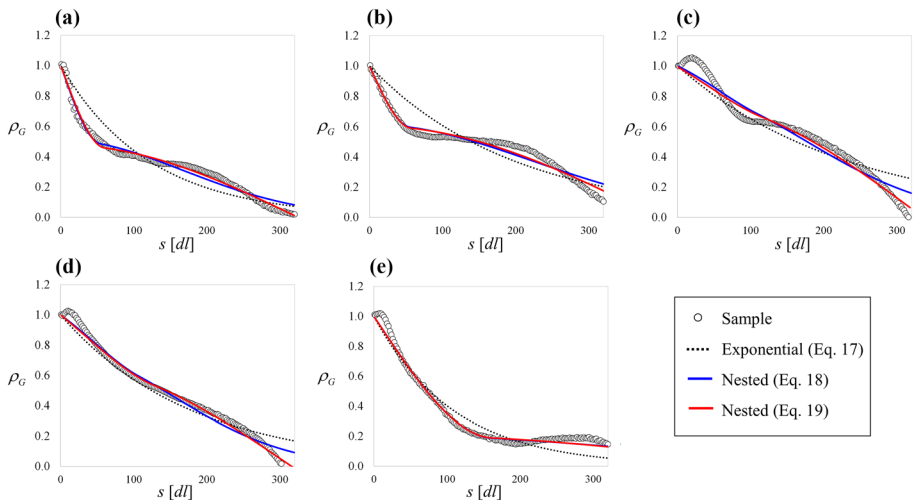
**Fig. 7** GSG and GEV model parameter estimates (**a** shape and **b** scale parameters) versus time

mirroring the temporal behavior of  $k$ . Therefore, these results suggest that the time evolution of these structures has a major effect on the statistical distribution of  $R'$ . The temporal trend exhibited by  $\sigma_G$  indicates an increased spreading of the distribution of rates at  $t_4$ , whereas the peak of the GEV scale parameter,  $\sigma$ , is attained at a later time (i.e.,  $t_5$ ).

The evolution of the spatial correlation of rates can be inferred from the analysis of  $\rho_G$  vs lag at various observation times (Fig. 8). The skill of a single-parameter exponential model:

$$\rho_G = \exp(-s/a) \tag{17}$$

to represent the observed correlation is compared against the results obtained through two selected formulations of nested structures, whose components are associated with standard stationary variograms:



**Fig. 8** Estimated values of  $\rho_G$  vs lag (symbol) obtained from method of moments at all observation times. Results from calibration of exponential (Eq. 17) and nested (Eqs. 18 and 19) analytical models are also depicted

$$\rho_G(s) = \begin{cases} 1 - \left\{ \frac{c}{\sigma_G^2} \left[ 1.5(s/a_1) - 0.5(s/a_1)^3 \right] + \frac{\sigma_G^2 - c}{\sigma_G^2} \left[ 1 - \exp \left( -(s/a_2)^2 \right) \right] \right\} & \text{for } s < a_1 \\ 1 - \frac{c}{\sigma_G^2} - \frac{\sigma_G^2 - c}{\sigma_G^2} \left[ 1 - \exp \left( -(s/a_2)^2 \right) \right] & \text{for } s \geq a_1 \end{cases}, \tag{18}$$

$$\rho_G(s) = \begin{cases} 1 - \left\{ \frac{c}{\sigma_G^2} \left[ 1.5(s/a_1) - 0.5(s/a_1)^3 \right] + \frac{\sigma_G^2 - c}{\sigma_G^2} \left[ 1 - \cos \left( \pi s/a_2 \right) \right] \right\} & \text{for } s < a_1 \\ 1 - \frac{c}{\sigma_G^2} - \frac{\sigma_G^2 - c}{\sigma_G^2} \left[ 1 - \cos \left( \pi s/a_2 \right) \right] & \text{for } s \geq a_1 \end{cases}. \tag{19}$$

Each of these models, respectively, composed by a spherical and a Gaussian model (Eq. 18) and a spherical and a hole-effect model (Eq. 19), is defined in terms of three parameters: (i) the range of each component,  $a_1$  and  $a_2$ , and (ii) the coefficient  $c$ , which determines the relative contribution (or weight) of each component. We note that these formulations appear to be more complex than the exponential model (Eq. 17). Nevertheless, we consider these due to the usefulness of nested variogram structures to interpret spatially settings where multiple processes, each characterized by their own degree of spatial persistence, can jointly contribute to the resulting heterogeneous pattern of the overall system.

The effectiveness of the models corresponding to Eqs. 17–19 is evaluated within a ML framework. While estimates of model parameters are obtained through minimization of the negative log-likelihood (NLL; see e.g., Carrera and Neuman 1986) criterion, the performance of a given model is ranked according to the well-established Kashyap (KIC) model discrimination criterion (Kashyap 1982):

$$\text{KIC} = \text{NLL} - N_p \ln(2\pi) - \ln |\mathbf{Q}|. \tag{20}$$

Here,  $N_p$  is the number of parameters associated with a given model and  $|\mathbf{Q}|$  is the determinant of the covariance matrix of the ML parameter estimation errors. Relying on KIC enables one to consider the quality of model fit to observations (via NLL) while jointly penalizing models with large  $N_p$  and fully considering the quality of parameter estimates. The latter aspect is embedded in  $|\mathbf{Q}|$ , which acts as a term penalizing models with small variance (i.e., large expected information content per observation) of parameter estimates (Ye et al. 2008). In this context, model ranking is performed according to increasing values of KIC, lower values of the latter corresponding to more skillful models.

Figure 8a–e depicts the values of  $\rho_G$  estimated at various times along the experiment together with the results obtained through the calibrated theoretical models. A qualitative inspection of these plots suggests that the nested formulations outperform the simple exponential model. This is quantitatively supported by the ML results collected in Table 3, where one can note that a nested structure composed by a spherical and a hole effect model (Eq. 19) is always ranked as best among the three models assessed. This result imbues us with confidence about the possibility to include in our interpretive model the richness of mechanisms underlying the system evolution through the superimposition of diverse correlation structures. We note that the contribution of a given component of a nested structure to acting processes can be assessed in simple large scale sedimentary settings, where these can be related to temporal sequences of depositional processes (e.g., Salamon et al. 2007 and references therein). As this is the first time, to the best of our knowledge, that these types of analyses are performed for scenarios of the kind we focus upon, disentangling the way components of nested structures can be associated with the action of mechanisms



**Table 3** Values for negative log-likelihood (NLL) and Kashyap (KIC) model identification criteria obtained from maximum likelihood parameter estimation for the selected analytical models of  $\rho_G$

Time	$t_2$		$t_3$		$t_4$		$t_5$		$t_6$	
	NLL	KIC	NLL	KIC	NNL	KIC	NLL	KIC	NLL	KIC
Exponential (Eq. 17)	-333.8	-337.8	-298.6	-303.6	-311.3	-316.6	-377.0	-381.3	-408.6	-411.9
Nested (spherical and Gaussian, Eq. 18)	-613.2	-612.1	-613.2	-613.8	-429.3	-434.5	-507.3	-506.4	-615.3	-618.7
Nested (spherical and hole effect, Eq. 19)	-756.2	-753.1	-646.6	-646.5	-515.0	-518.8	-672.0	-672.3	-619.4	-623.8

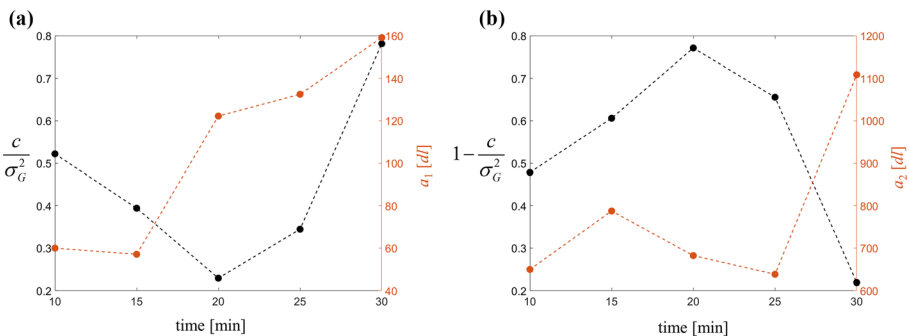
described in Sect. 2.1 and 3.1 poses significant challenges. We present preliminary interpretations in the following, noting that future works will be keyed to further support these results with additional data.

Following the results illustrated above, we focus on the parameters of the most highly ranked model (Eq. 19) and analyze their evolution in time. Figure 9a, b depict the behavior of  $\left(c_1 = \frac{c}{\sigma_G^2}, a_1\right)$  and  $\left(c_2 = 1 - \frac{c}{\sigma_G^2}, a_2\right)$ , i.e., relative contribution and range of component 1 and 2 in Eq. (19), respectively. It can be noted that  $a_2 \gg a_1$  at all times, components 1 and 2 being, respectively, related to short- and long-range correlation. These results show that  $a_1$  tends to increase with time, ranging from 60 to 160 dl, indicating that short-range correlations increase as the dissolution pattern on the terraces evolves from being monolayer-pit to step retreat dominated. Otherwise, the long-range correlation parameter,  $a_2$ , displays an oscillatory behavior within the range 640–800 dl, showing a steep increase only at  $t=t_6$ . Length scales in this range are comparable with the distance between the multilayer pits developing on the opposite corners of the observation window. Additional evidence about a possible relationship between the dynamics of multilayer pits and the long-range component of  $\rho_G$  can be inferred from the analysis of parameters  $c_1$  and  $c_2$ . Our results document that: (i) both components have similar weight ( $c_1 \approx c_2 \approx 0.5$ ) at  $t=t_1$ ; and (ii) the long-range component becomes dominant at  $t_4=20$  min, its relevance decreasing for  $t>t_4$  (attaining the value  $c_2=0.22$  at  $t_6=30$  min). Comparison of these results with those depicted in Fig. 3a evidences that the relative importance of the long-range component follows the same trend displayed by the MPs spreading rate.

Figure 9 provides a clear indication supporting a conceptual picture according to which the dynamics of multilayer pits markedly and quantifiably affect the frequency distribution as well as the spatial correlation of rates. Our findings further support the benefit of relying on a modeling framework capable of jointly embedding the statistical behavior of rates and of the associated increments.

### 4 Conclusions

We monitor the evolution of the surface topography of a calcite crystal subjected to dissolution through in situ real-time AFM measurements. Differences between topography maps at given time intervals yields quantitative spatial distributions of dissolution rates,  $R^*$ , at



**Fig. 9** Time evolution of the parameters of the most highly ranked model interpreting  $\rho_G$  (Table 3): relative contribution and range of **a** component 1 and **b** component 2 of the nested structure (Eq. 19)

various observation times elapsed from the renewal of the fluid (deionized water) in contact with the mineral surface. The established experimental protocol enabled us to achieve the main objective of the study, corresponding to the characterization of the spatially heterogeneous distribution of rates. The latter is assessed with a stochastic context which relies on a generalized sub-Gaussian interpretive model (Riva et al. 2015), providing a unified framework of analysis for the probability distributions of the rate ( $R'$ ) and its spatial increments ( $\Delta R$ ) evaluated at various separation distances (or lags).

The evolution of surface patterns evidenced by AFM images is consistent with the temporal increase of the solution saturation in a boundary layer at the fluid/solid interface. The spreading rate evaluated on monolayer pits is monotonically decreasing in time. Otherwise, the multilayer pit expansion rate is highest at an intermediate time ( $t=20$  min) during the experiment and then displays a steep decrease. A similar trend is also documented by (i) the shape parameter and (ii) the scale parameter of the GSG model employed for the joint characterization of the statistical behavior of  $R'$  and  $\Delta R$ .

We provide qualitative and quantitative results about the relationship between the parameters of the GSG stochastic model and the dynamics of multilayer pits, documenting that the evolution of these structures significantly affects the statistical features of dissolution rates.

Relying on the Kullback–Leibler divergence metric, we find that our GSG model generally shows a higher affinity to the sample probability distribution of  $R'$  than the generalized extreme values (GEV) model which has been previously used (e.g., Brand et al. 2017). We emphasize that the GSG formulation offers the additional advantage of fully embedding the features of the probability distributions of both  $R'$  and  $\Delta R$  in a unified and consistent manner, an element which is not included in the above mentioned interpretations based on the GEV model. The adopted GSG model relies on a log-normal subordinator, which has been already tested for the interpretation of the spatial statistics of a wide range of data (e.g., Riva et al. 2015; Siena et al. 2019). We note that our theoretical framework includes the possibility of selecting a general form of the subordinator (Siena et al. 2020). The application of alternative formulations of the GSG model on dissolution rates will be the subject of future investigations.

One should also consider that the nature of the dissolution process at the microscopic level leads to the development of characteristic patterns (i.e., mono/multilayer pits or steps) whose main traits can be somehow categorized deterministically to some extent. Therefore, a synthetic generation of rate random fields purely on the basis of parameter values identified from the interpretation of sample statistics would necessarily be incomplete in some cases. In this context, Pollet-Villard et al. (2016) highlighted the importance of characterizing the spatial correlation of key variables driving mineral dissolution processes. These authors develop a numerical model to describe dissolution and ground model calibration on the comparison between sample variograms evaluated on experimental data of surface topography and its numerically based counterpart. In our work, the stochastic characterization of  $\Delta R$  data yields critical information about the spatial correlation of the rate field through the correlation function ( $\rho_G$ ) associated with the GSG model. Among the various theoretical models analyzed for the interpretation of  $\rho_G$ , we find that a nested structure with a short-range and a long-range correlation component (see Eq. 19) is consistently ranked as best according to rigorous model identification criteria. The temporal behavior of these characteristic length scales appears to be linked to the evolutionary dynamics of step retreat/monolayer pits and multilayer pit structures documented in the experiments. Our results reveal the impact that the diverse dissolution patterns can have on the correlation structure of reaction rates. This information can potentially lead to the development

of future flexible numerical models, which can have the capability of taking into account multiple length scales resulting from the occurrence of diverse reaction mechanisms.

**Funding** Open access funding provided by Politecnico di Milano within the CRUI-CARE Agreement. Information that explains whether and by whom the research was supported: No funds, grants, or other support was received.

**Availability of Data and Material** The data are available online: <https://data.mendeley.com/datasets/jkthhkg9k2/draft?a=10eb0ad6-2b3f-42ad-83b2-0252a3f8c694>.

**Code availability** Not applicable.

**Declaration**

**Conflicts of interest** The authors have no conflict of interest to declare.

**Open Access** This article is licensed under a Creative Commons Attribution 4.0 International License, which permits use, sharing, adaptation, distribution and reproduction in any medium or format, as long as you give appropriate credit to the original author(s) and the source, provide a link to the Creative Commons licence, and indicate if changes were made. The images or other third party material in this article are included in the article's Creative Commons licence, unless indicated otherwise in a credit line to the material. If material is not included in the article's Creative Commons licence and your intended use is not permitted by statutory regulation or exceeds the permitted use, you will need to obtain permission directly from the copyright holder. To view a copy of this licence, visit <http://creativecommons.org/licenses/by/4.0/>.

## References

- Anabaraonye, B.U., Crawshaw, J.P., Trusler, J.P.M.: Brine chemistry effects in calcite dissolution kinetics at reservoir conditions. *Chem. Geol.* **509**, 92–102 (2019). <https://doi.org/10.1016/j.chemgeo.2019.01.014>
- Arvidson, R.S., Ertan, I.E., Amonette, J.E., Luttge, A.: Variation in calcite dissolution rates: *geochim. Cosmochim. Acta.* **67**, 1623–1634 (2003). [https://doi.org/10.1016/S0016-7037\(02\)01177-8](https://doi.org/10.1016/S0016-7037(02)01177-8)
- Bianchi Janetti, E., Dror, I., Riva, M., Guadagnini, A., Sanchez-Vila, X., Berkowitz, B.: Mobility and interaction of heavy metals in a natural soil. *Transp. Porous Media.* **97**, 295–315 (2013). <https://doi.org/10.1007/s11242-013-0125-2>
- Bibi, I., Arvidson, R., Fischer, C., Lüttge, A.: Temporal evolution of calcite surface dissolution kinetics. *Minerals.* **8**, 256 (2018). <https://doi.org/10.3390/min8060256>
- Bouissonnié, A., Daval, D., Marinoni, M., Ackerer, P.: From mixed flow reactor to column experiments and modeling: upscaling of calcite dissolution rate. *Chem. Geol.* **487**, 63–75 (2018). <https://doi.org/10.1016/j.chemgeo.2018.04.017>
- Brand, A.S., Feng, P., Bullard, J.W.: Calcite dissolution rate spectra measured by in situ digital holographic microscopy. *Geochim. Cosmochim. Acta.* **213**, 317–329 (2017). <https://doi.org/10.1016/j.gca.2017.07.001>
- Carrera, J., Neuman, S.P.: Estimation of aquifer parameters under transient and steady state conditions: 1. Maximum likelihood method incorporating prior information. *Water Resour. Res.* **22**, 199–210 (1986). <https://doi.org/10.1029/WR022i002p00199>
- Daval, D.: Carbon dioxide sequestration through silicate degradation and carbon mineralisation: promises and uncertainties. *NPJ Mater. Degrad.* **2**, 11 (2018). <https://doi.org/10.1038/s41529-018-0035-4>
- Dong, S., Berelson, W.M., Adkins, J.F., Rollins, N.E., Naviaux, J.D., Pirbadian, S., El-Naggar, M.Y., Teng, H.H.: An atomic force microscopy study of calcite dissolution in seawater. *Geochim. Cosmochim. Acta.* **283**, 40–53 (2020). <https://doi.org/10.1016/j.gca.2020.05.031>
- Emmanuel, S.: Mechanisms influencing micron and nanometer-scale reaction rate patterns during dolostone dissolution. *Chem. Geol.* **363**, 262–269 (2014). <https://doi.org/10.1016/j.chemgeo.2013.11.002>
- Erol, S., Fowler, S.J., Nehler, M., De Boever, E., Harcouët-Menou, V., Laenen, B.: An analytical algorithm of porosity–permeability for porous and fractured media: extension to reactive transport conditions

- and fitting via flow-through experiments within limestone and dolomite. *Transp. Porous Media*. **129**, 343–383 (2019). <https://doi.org/10.1007/s11242-019-01293-z>
- Fischer, C., Arvidson, R.S., Lüttge, A.: How predictable are dissolution rates of crystalline material? *Geochim. Cosmochim. Acta*. **98**, 177–185 (2012). <https://doi.org/10.1016/j.gca.2012.09.011>
- Fischer, C., Kurganskaya, I., Schäfer, T., Lüttge, A.: Variability of crystal surface reactivity: What do we know? *Appl. Geochem.* **43**, 132–157 (2014). <https://doi.org/10.1016/j.apgeochem.2014.02.002>
- Guadagnini, A., Neuman, S.P., Schaap, M.G., Riva, M.: Anisotropic statistical scaling of vadose zone hydraulic property estimates near Maricopa, Arizona. *Water Resour. Res.* **49**, 8463–8479 (2013). <https://doi.org/10.1002/2013WR014286>
- Guadagnini, A., Neuman, S.P., Schaap, M.G., Riva, M.: Anisotropic statistical scaling of soil and sediment texture in a stratified deep vadose zone near Maricopa, Arizona. *Geoderma*. **214–215**, 217–227 (2014). <https://doi.org/10.1016/j.geoderma.2013.09.008>
- Guadagnini, A., Riva, M., Neuman, S.P.: Recent advances in scalable non-gaussian geostatistics: the generalized sub-gaussian model. *J. Hydrol.* **562**, 685–691 (2018). <https://doi.org/10.1016/j.jhydrol.2018.05.001>
- Guren, M.G., Putnis, C.V., Montes-Hernandez, G., King, H.E., Renard, F.: Direct imaging of coupled dissolution-precipitation and growth processes on calcite exposed to chromium-rich fluids. *Chem. Geol.* **552**, 119770 (2020). <https://doi.org/10.1016/j.chemgeo.2020.119770>
- Harstad, A.O., Stipp, S.L.S.: Calcite dissolution: effects of trace cations naturally present in Iceland spar calcites. *Geochim. Cosmochim. Acta*. **71**, 56–70 (2007). <https://doi.org/10.1016/j.gca.2006.07.037>
- Heberling, F., Bosbach, D., Eckhardt, J.-D., Fischer, U., Glowacky, J., Haist, M., Kramar, U., Loos, S., Müller, H.S., Neumann, T., Pust, C., Schäfer, T., Stelling, J., Ukrainczyk, M., Vinograd, V., Vučak, M., Winkler, B.: Reactivity of the calcite–water-interface, from molecular scale processes to geochemical engineering. *Appl. Geochem.* **45**, 158–190 (2014). <https://doi.org/10.1016/j.apgeochem.2014.03.006>
- Hommel, J., Coltman, E., Class, H.: Porosity–permeability relations for evolving pore space: a review with a focus on (bio-)geochemically altered porous media. *Transp. Porous Media*. **124**, 589–629 (2018). <https://doi.org/10.1007/s11242-018-1086-2>
- Kashyap, R.L.: Optimal choice of AR and MA parts in autoregressive moving average models. *IEEE Trans. Pattern Anal. Mach. Intell.* (1982). <https://doi.org/10.1109/TPAMI.1982.4767213>
- Khather, M., Saedi, A., Myers, M.B., Giwelli, A.: Effects of CO<sub>2</sub>-saturated brine on the injectivity and integrity of chalk reservoirs. *Transp. Porous Media*. **135**, 735–751 (2020). <https://doi.org/10.1007/s11242-020-01498-7>
- Kristensen, R., Stipp, S.L.S., Refson, K.: Modeling steps and kinks on the surface of calcite. *J. Chem. Phys.* **121**, 8511 (2004). <https://doi.org/10.1063/1.1775771>
- Kullback, S., Leibler, R.A.: On information and sufficiency. *Ann. Math. Stat.* **22**, 79–86 (1951). <https://doi.org/10.1214/aoms/1177729694>
- Levenson, Y., Emmanuel, S.: Pore-scale heterogeneous reaction rates on a dissolving limestone surface. *Geochim. Cosmochim. Acta*. **119**, 188–197 (2013). <https://doi.org/10.1016/j.gca.2013.05.024>
- Liu, H.H., Molz, F.J.: Comment on “Evidence for non-Gaussian scaling behavior in heterogeneous sedimentary formations” by Scott Painter. *Water Resour. Res.* **33**, 907–908 (1997). <https://doi.org/10.1029/96WR03788>
- Lüttge, A.: Etch pit coalescence, surface area, and overall mineral dissolution rates. *Am. Mineral.* **90**, 1776–1783 (2005). <https://doi.org/10.2138/am.2005.1734>
- Lüttge, A., Arvidson, R.S., Fischer, C.: A stochastic treatment of crystal dissolution kinetics. *Elements* **9**, 183–188 (2013). <https://doi.org/10.2113/gselements.9.3.183>
- Lüttge, A., Arvidson, R.S., Fischer, C., Kurganskaya, I.: Kinetic concepts for quantitative prediction of fluid–solid interactions. *Chem. Geol.* **504**, 216–235 (2019). <https://doi.org/10.1016/j.chemgeo.2018.11.016>
- Marinello, F., Carmignato, S., Voltan, A., Savio, E., De Chiffre, L.: Error sources in atomic force microscopy for dimensional measurements: taxonomy and modeling. *J. Manuf. Sci. Eng.* (2010). <https://doi.org/10.1115/1.4001242>
- Meerschaert, M.M.: Fractional laplace model for hydraulic conductivity. *Geophys. Res. Lett.* **31**, L08501 (2004). <https://doi.org/10.1029/2003GL019320>
- Offeddu, F.G., Cama, J., Soler, J.M., Putnis, C.: V: Direct nanoscale observations of the coupled dissolution of calcite and dolomite and the precipitation of gypsum. *Beilstein J. Nanotechnol.* **5**, 1245–1253 (2014). <https://doi.org/10.3762/bjnano.5.138>
- Painter, S.: Evidence for non-Gaussian scaling behavior in heterogeneous sedimentary formations, (1996)
- Pollet-Villard, M., Daval, D., Fritz, B., Knauss, K.G., Schäfer, G., Ackerer, P.: Influence of etch pit development on the surface area and dissolution kinetics of the orthoclase (001) surface. *Chem. Geol.* **447**, 79–92 (2016). <https://doi.org/10.1016/j.chemgeo.2016.09.038>

- Renard, F., Putnis, C.V., Montes-Hernandez, G., Ruiz-Agudo, E., Hovelmann, J., Sarret, G.: Interactions of arsenic with calcite surfaces revealed by in situ nanoscale imaging. *Geochim. Cosmochim. Acta.* **159**, 61–79 (2015). <https://doi.org/10.1016/j.gca.2015.03.025>
- Renard, F., Røyne, A., Putnis, C.V.: Timescales of interface-coupled dissolution-precipitation reactions on carbonates. *Geosci. Front.* **10**, 17–27 (2019). <https://doi.org/10.1016/j.gsf.2018.02.013>
- Riva, M., Neuman, S.P., Guadagnini, A.: Sub-gaussian model of processes with heavy-tailed distributions applied to air permeabilities of fractured tuff. *Stoch. Environ. Res. Risk Assess.* **27**, 195–207 (2013a). <https://doi.org/10.1007/s00477-012-0576-y>
- Riva, M., Neuman, S.P., Guadagnini, A.: New scaling model for variables and increments with heavy-tailed distributions. *Water Resour. Res.* **51**, 4623–4634 (2015). <https://doi.org/10.1002/2015WR016998>
- Riva, M., Neuman, S.P., Guadagnini, A., Siena, M.: Anisotropic scaling of berea sandstone log air permeability statistics. *Vadose Zo. J.* (2013b). <https://doi.org/10.2136/vzj2012.0153>
- Ruiz-Agudo, E.R., Putnis, C.V.: Direct observations of mineral fluid reactions using atomic force microscopy: the specific example of calcite. *Mineral. Mag.* **76**, 227–253 (2012). <https://doi.org/10.1180/minmag.2012.076.1.227>
- Salamon, P., Fernández-García, D., Gómez-Hernández, J.J.: Modeling tracer transport at the MADE site: the importance of heterogeneity. *Water Resour. Res.* (2007). <https://doi.org/10.1029/2006WR005522>
- Siena, M., Guadagnini, A., Bouissonnié, A., Ackerer, P., Daval, D., Riva, M.: Generalized sub-gaussian processes: theory and application to hydrogeological and geochemical data. *Water Resour. Res.* (2020). <https://doi.org/10.1029/2020WR027436>
- Siena, M., Riva, M., Giamberini, M., Gouze, P., Guadagnini, A.: Statistical modeling of gas-permeability spatial variability along a limestone core. *Spat. Stat.* **34**, 100249 (2019). <https://doi.org/10.1016/j.spasta.2017.07.007>
- Smith, M.E., Knauss, K.G., Higgins, S.R.: Effects of crystal orientation on the dissolution of calcite by chemical and microscopic analysis. *Chem. Geol.* **360–361**, 10–21 (2013). <https://doi.org/10.1016/j.chemgeo.2013.09.015>
- Teng, H.H.: Controls by saturation state on etch pit formation during calcite dissolution. *Geochim. Cosmochim. Acta.* **68**, 253–262 (2004). [https://doi.org/10.1016/S0016-7037\(03\)00423-X](https://doi.org/10.1016/S0016-7037(03)00423-X)
- Trindade Pedrosa, E., Kurganskaya, I., Fischer, C., Luttge, A.: A statistical approach for analysis of dissolution rates including surface morphology. *Minerals.* **9**, 458 (2019). <https://doi.org/10.3390/min9080458>
- Xu, M., Hu, X., Knauss, K.G., Higgins, S.R.: Dissolution kinetics of calcite at 50–70°C: an atomic force microscopic study under near-equilibrium conditions. *Geochim. Cosmochim. Acta.* **74**, 4285–4297 (2010). <https://doi.org/10.1016/j.gca.2010.04.066>
- Ye, M., Meyer, P.D., Neuman, S.P.: On model selection criteria in multimodel analysis. *Water Resour. Res.* (2008). <https://doi.org/10.1029/2008WR006803>

**Publisher's Note** Springer Nature remains neutral with regard to jurisdictional claims in published maps and institutional affiliations.

## Terms and Conditions

Springer Nature journal content, brought to you courtesy of Springer Nature Customer Service Center GmbH (“Springer Nature”).

Springer Nature supports a reasonable amount of sharing of research papers by authors, subscribers and authorised users (“Users”), for small-scale personal, non-commercial use provided that all copyright, trade and service marks and other proprietary notices are maintained. By accessing, sharing, receiving or otherwise using the Springer Nature journal content you agree to these terms of use (“Terms”). For these purposes, Springer Nature considers academic use (by researchers and students) to be non-commercial.

These Terms are supplementary and will apply in addition to any applicable website terms and conditions, a relevant site licence or a personal subscription. These Terms will prevail over any conflict or ambiguity with regards to the relevant terms, a site licence or a personal subscription (to the extent of the conflict or ambiguity only). For Creative Commons-licensed articles, the terms of the Creative Commons license used will apply.

We collect and use personal data to provide access to the Springer Nature journal content. We may also use these personal data internally within ResearchGate and Springer Nature and as agreed share it, in an anonymised way, for purposes of tracking, analysis and reporting. We will not otherwise disclose your personal data outside the ResearchGate or the Springer Nature group of companies unless we have your permission as detailed in the Privacy Policy.

While Users may use the Springer Nature journal content for small scale, personal non-commercial use, it is important to note that Users may not:

1. use such content for the purpose of providing other users with access on a regular or large scale basis or as a means to circumvent access control;
2. use such content where to do so would be considered a criminal or statutory offence in any jurisdiction, or gives rise to civil liability, or is otherwise unlawful;
3. falsely or misleadingly imply or suggest endorsement, approval, sponsorship, or association unless explicitly agreed to by Springer Nature in writing;
4. use bots or other automated methods to access the content or redirect messages
5. override any security feature or exclusionary protocol; or
6. share the content in order to create substitute for Springer Nature products or services or a systematic database of Springer Nature journal content.

In line with the restriction against commercial use, Springer Nature does not permit the creation of a product or service that creates revenue, royalties, rent or income from our content or its inclusion as part of a paid for service or for other commercial gain. Springer Nature journal content cannot be used for inter-library loans and librarians may not upload Springer Nature journal content on a large scale into their, or any other, institutional repository.

These terms of use are reviewed regularly and may be amended at any time. Springer Nature is not obligated to publish any information or content on this website and may remove it or features or functionality at our sole discretion, at any time with or without notice. Springer Nature may revoke this licence to you at any time and remove access to any copies of the Springer Nature journal content which have been saved.

To the fullest extent permitted by law, Springer Nature makes no warranties, representations or guarantees to Users, either express or implied with respect to the Springer nature journal content and all parties disclaim and waive any implied warranties or warranties imposed by law, including merchantability or fitness for any particular purpose.

Please note that these rights do not automatically extend to content, data or other material published by Springer Nature that may be licensed from third parties.

If you would like to use or distribute our Springer Nature journal content to a wider audience or on a regular basis or in any other manner not expressly permitted by these Terms, please contact Springer Nature at

[onlineservice@springernature.com](mailto:onlineservice@springernature.com)