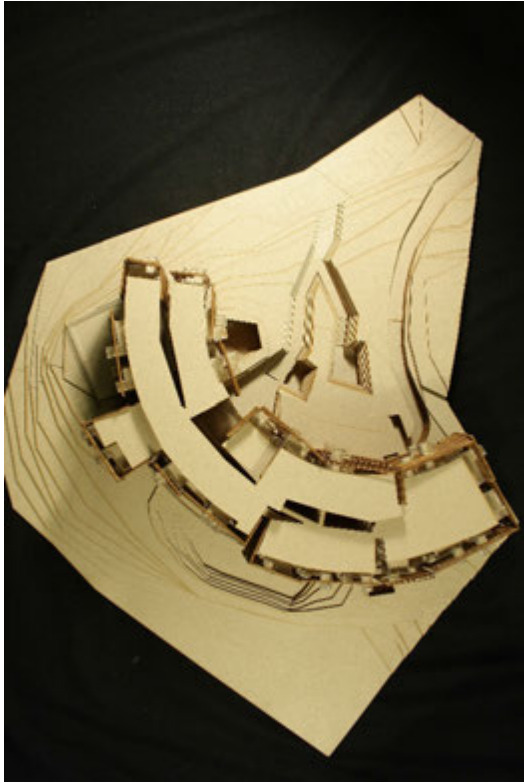




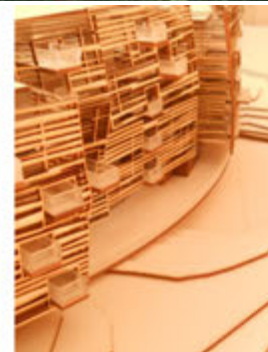
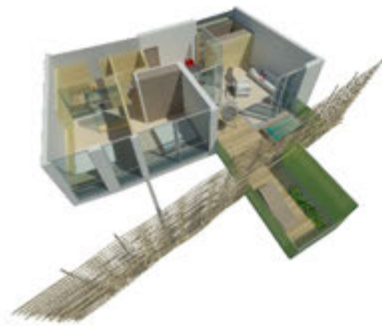
CAPO CERASO HUB

CAPO CERASO HUB
FABRIZIO LEONI ARCHITETTURA



CCH Capo Ceraso Hub

The design of this mix used Luxury hotel, located in Costa Smeralda, one of the most high-end tourism spots in Europe, currently under construction, starts from the involvement of the ground as a natural platform, on which it stands and from which it draws its organizational structure, its spatial hierarchies, its distribution logic and its system of access. Such complex ground welcomes and configures a large public space, a generous outdoor foyer articulated in a botanical park with main native plant species, a system of patios overlooked by public functions (congress areas, restaurant, commercial units,) and it acts as a pedestal for the main body, which hosts: the reception hall, the spa, the swimming pool, the gym, the lounge bar along with 55 apartments, 5 penthouses and the 20 boutique hotel suites. The mass of the building is dug in its central parts, for its entire vertical dimension, to convey natural light and fresh air in its heart and to ensure that all units enjoy a double exposure. Along these spaces creeps vegetation that grows on the major-dune, carrying the scents and colors of the Mediterranean countryside inside the building and accompanying residents and hotel guests up to their accommodations. Such building appears as a continuous but fractured mass, like a rock formation cracked from weathering, a composite monolith emerging from the ground and then attacked or colonized by an organic shell, a skin of vegetable origin. This skin wooden façade, supported by a light steel structure that engages regularly on the concrete skeleton, favors the extension and protection of the cantilevered terraces. Those, well designed and generously sized, allow the modulation of various levels of the opening of the apartments and hotel suites: from the open space of the galleries to the wide-open landscape.



CAPO CERASO HUB - Olbia, Sardinia

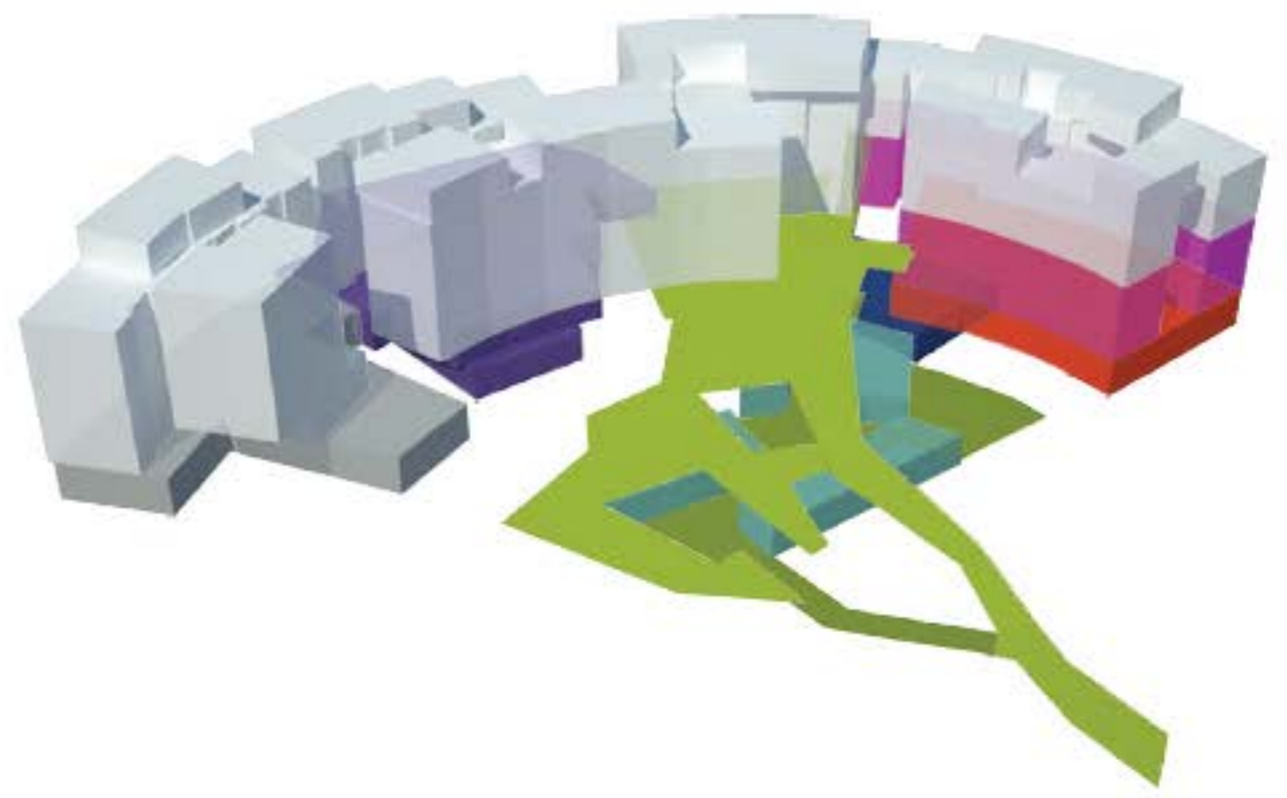
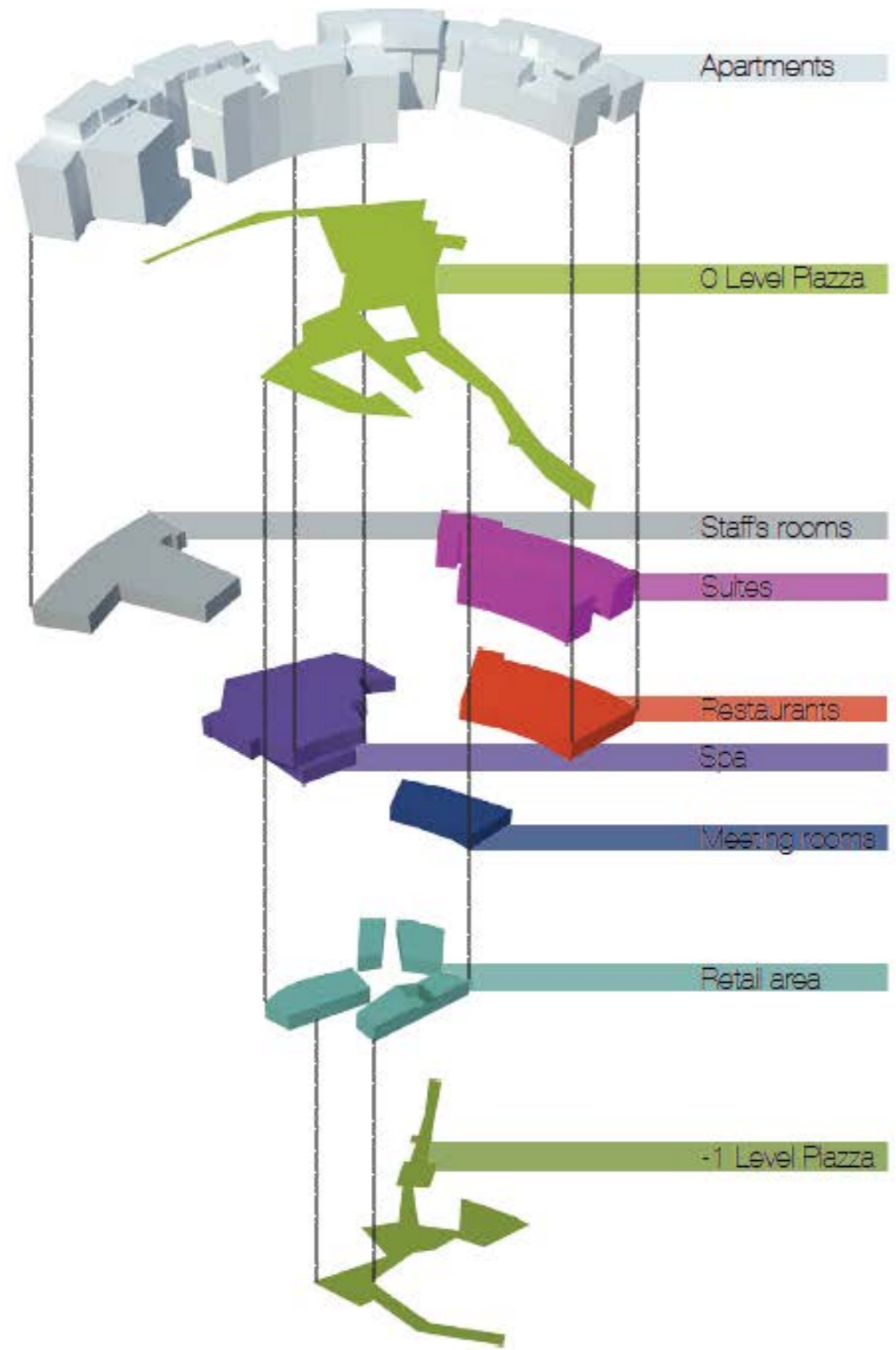
PROGRAM: 55 apartments
5 penthouses
20 hotel rooms
commercial
restaurant
mini mall + retail area
conference rooms
spa + hammam
swimming pool

programmatic diagram	04
general plan	06
plans	09
penthouses	15
plaza	19
mini mall - retail area	23
hall	24
swimming pool	27
apartment	30
suite	43
sections	52

designer_

Fabrizio Leoni Architettura

calle Setanti', 5 - 08034 Barcelona
www.fabrizioleoniarchitettura.com





south-west general view



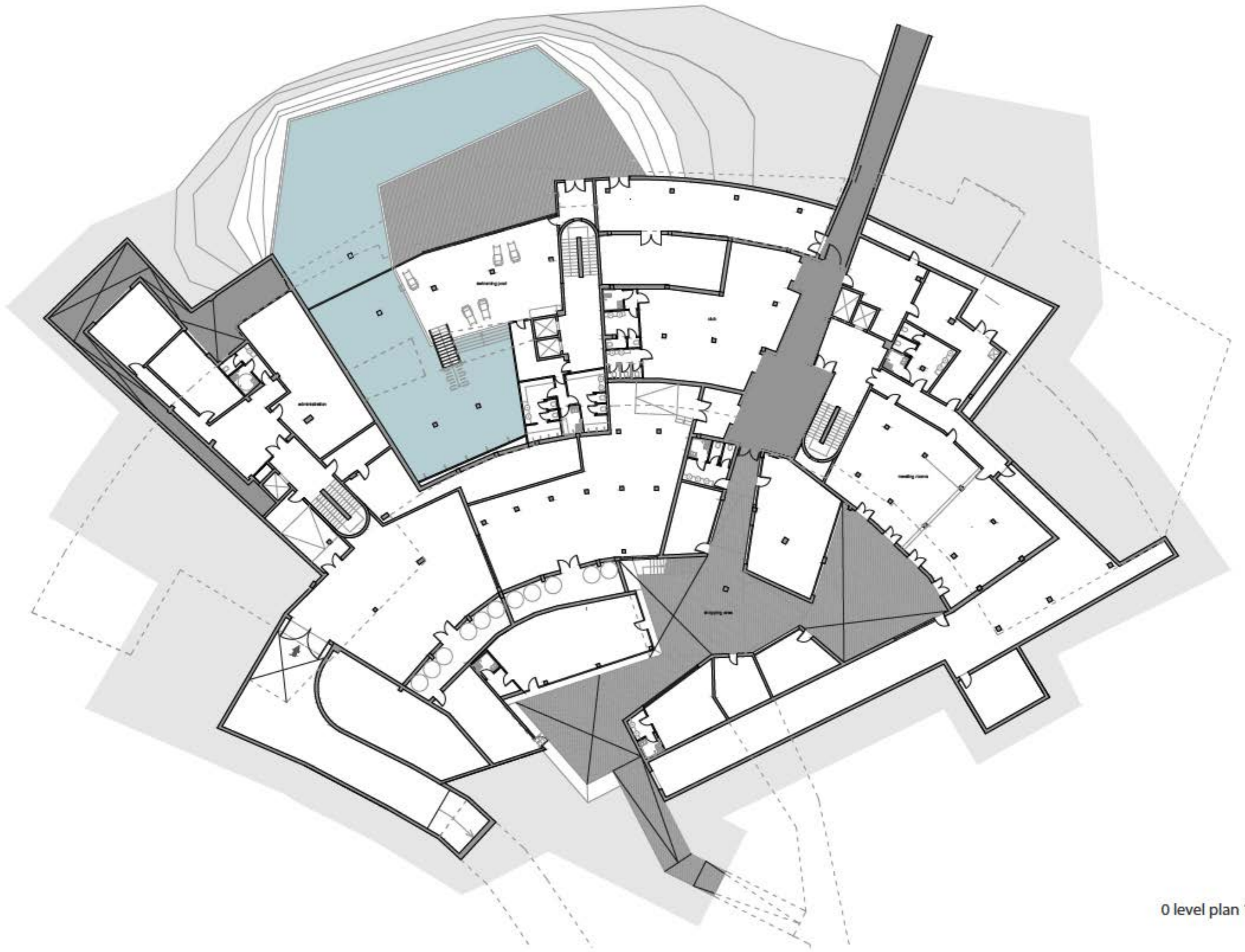
general plan 1:500



north-east general view



east view



0 level plan 1:300



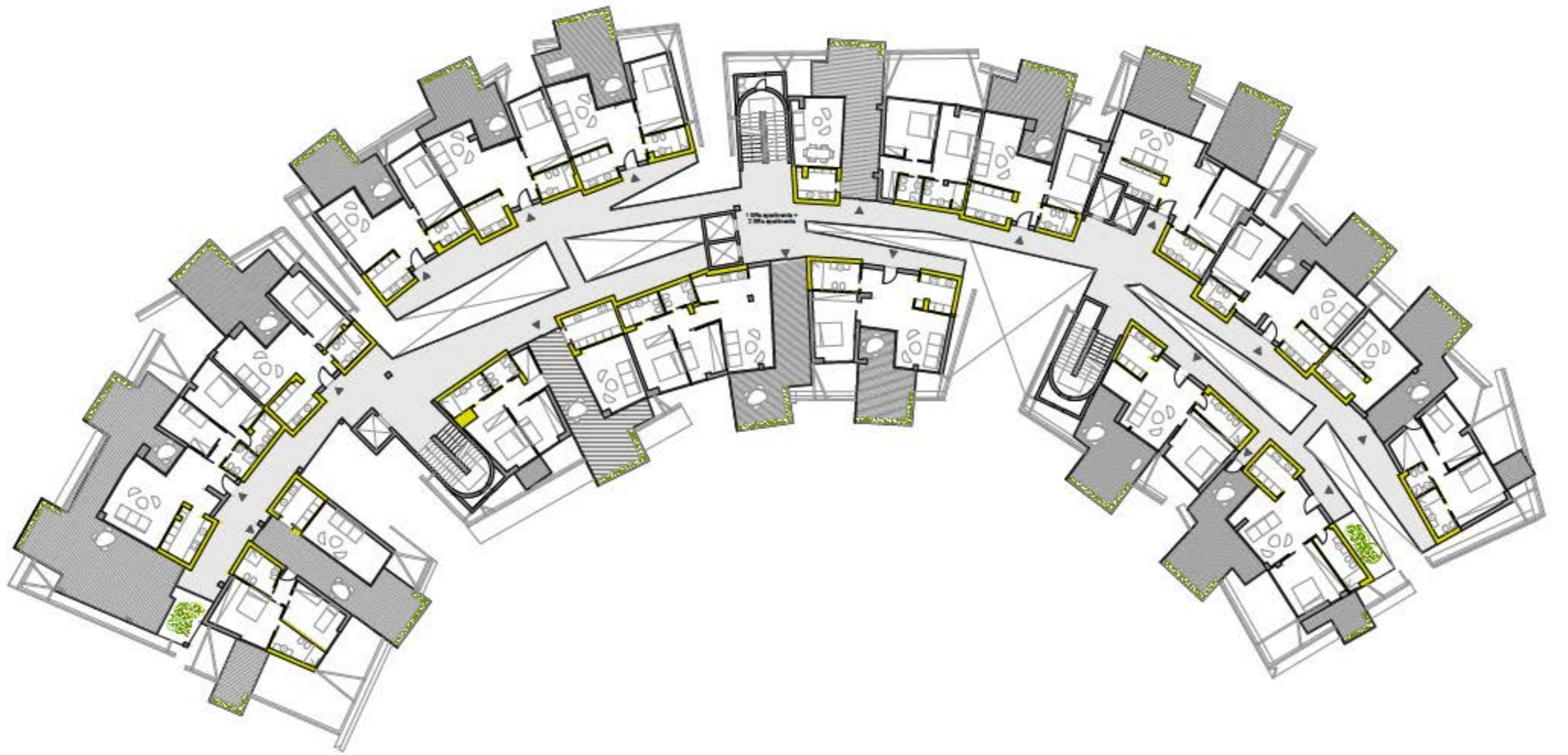
1 level plan 1:300



2 level plan 1:300

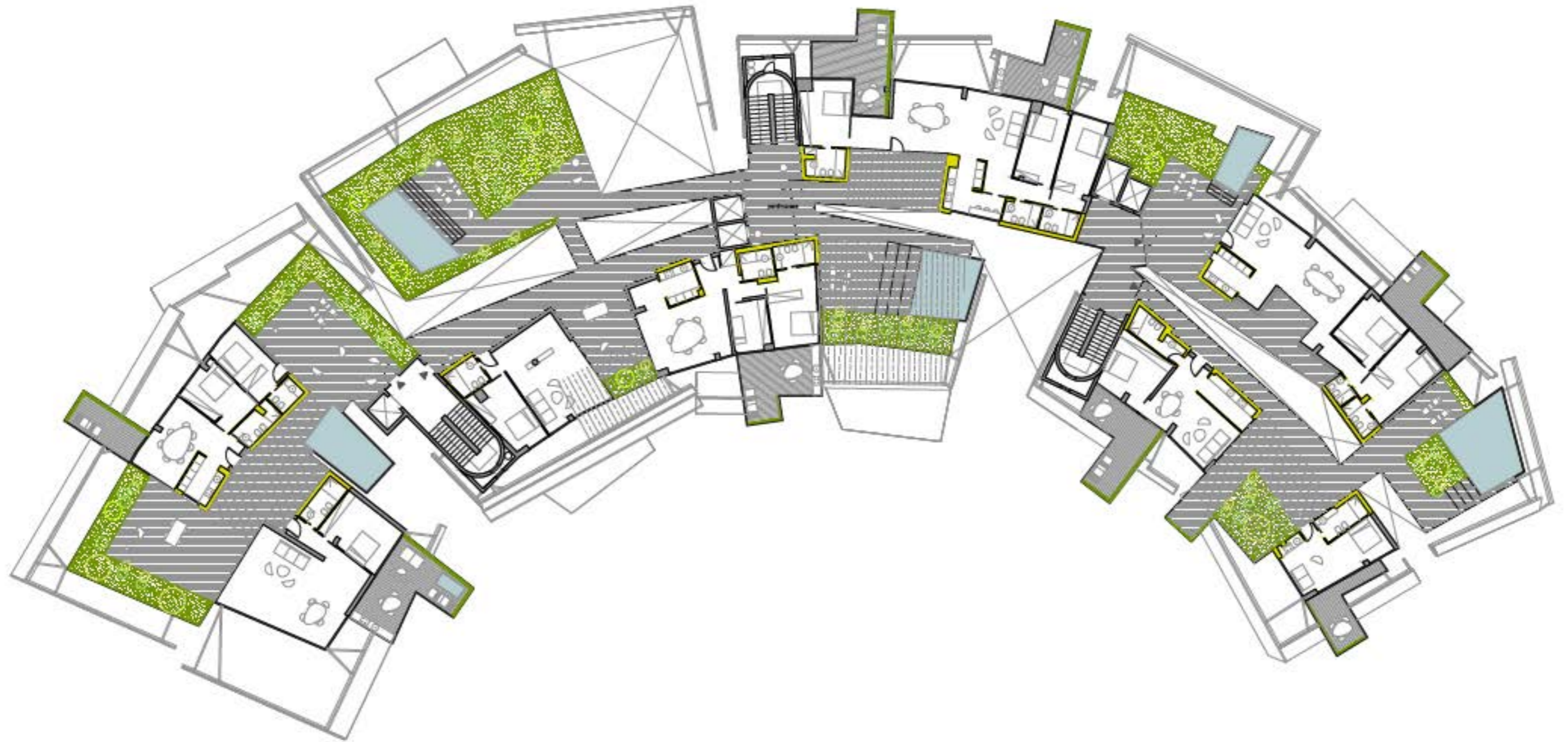


3 level plan 1:300



4 level plan 1:300



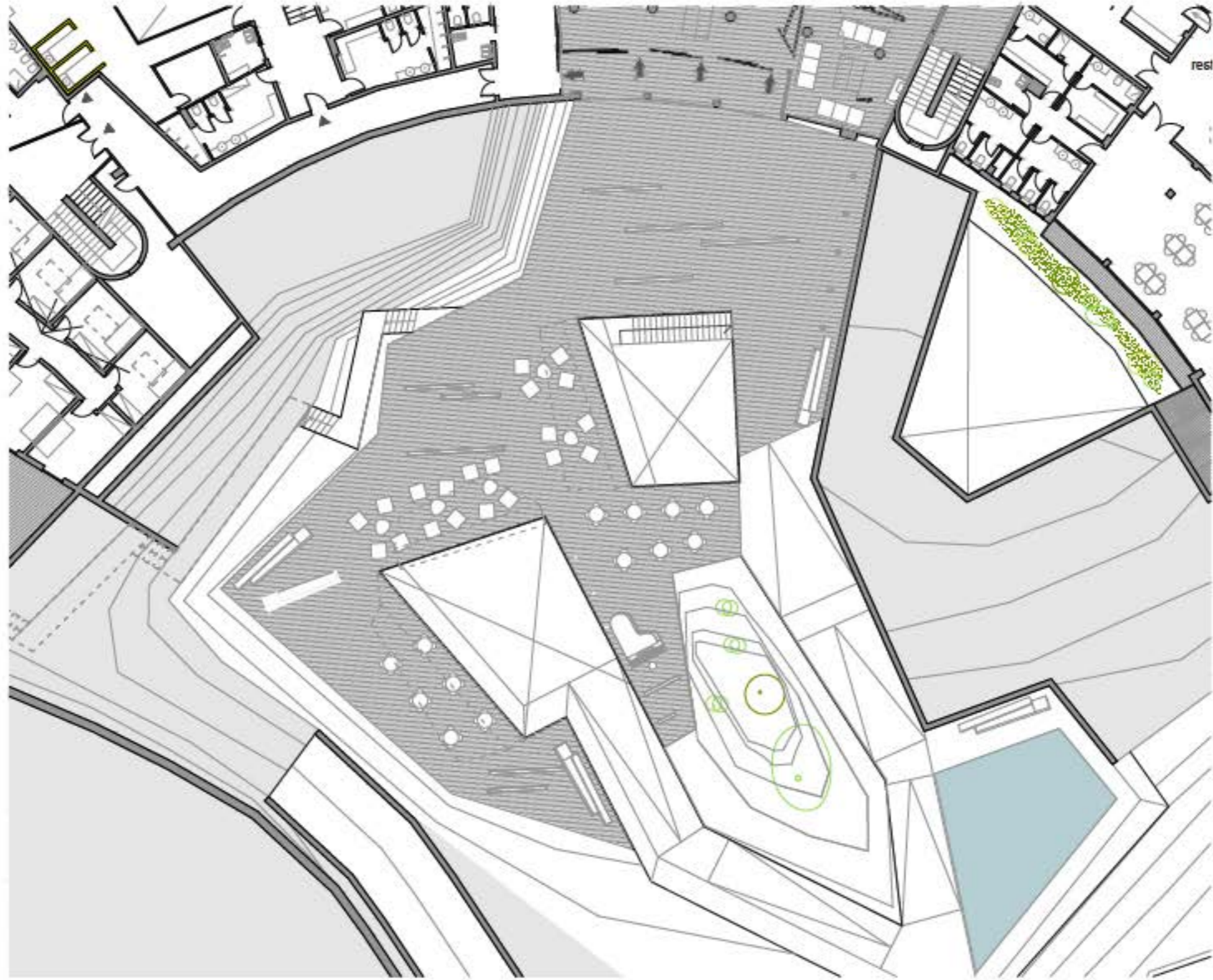




internal distribution system









main entrance to the plaza

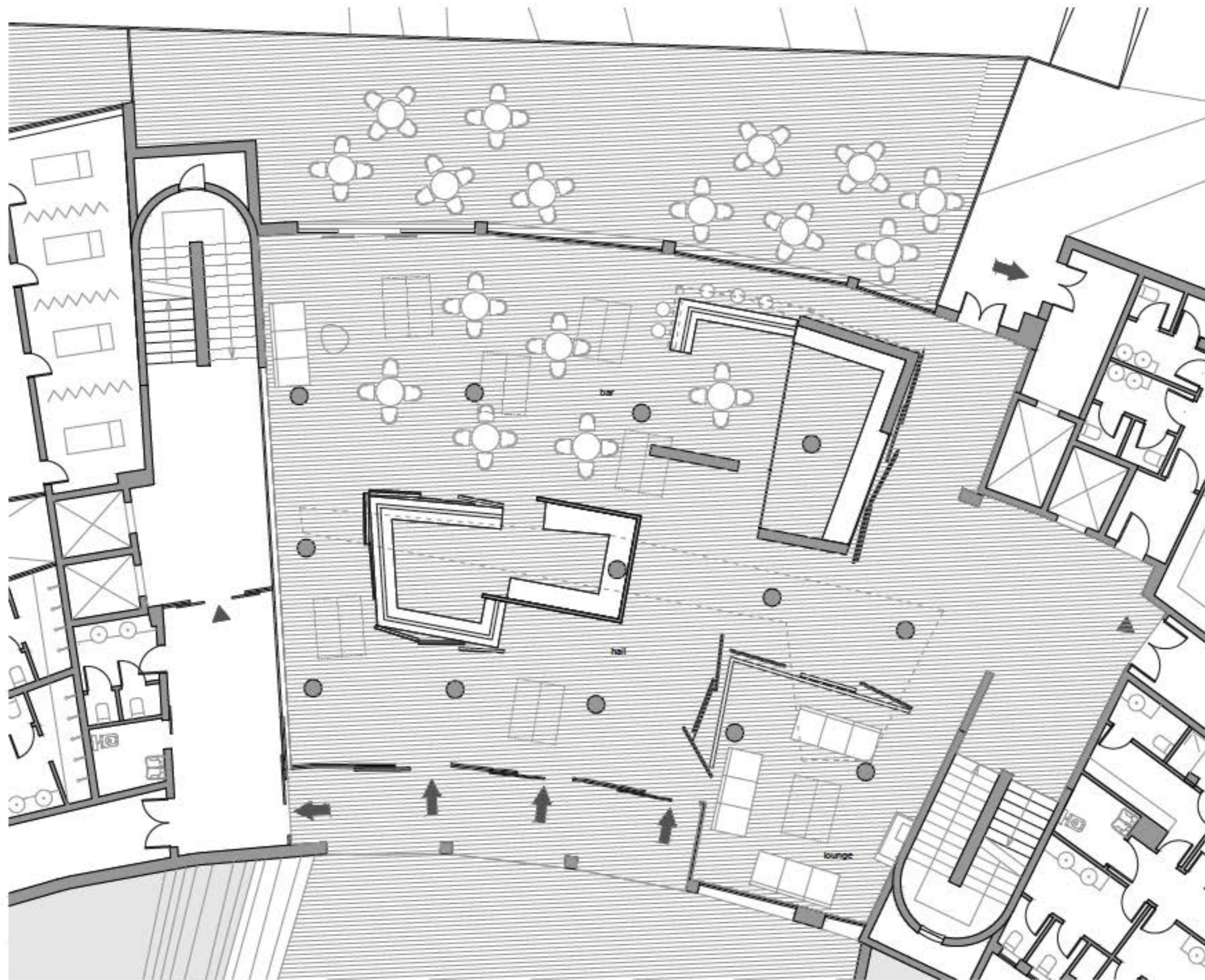






mimi mall - retail area

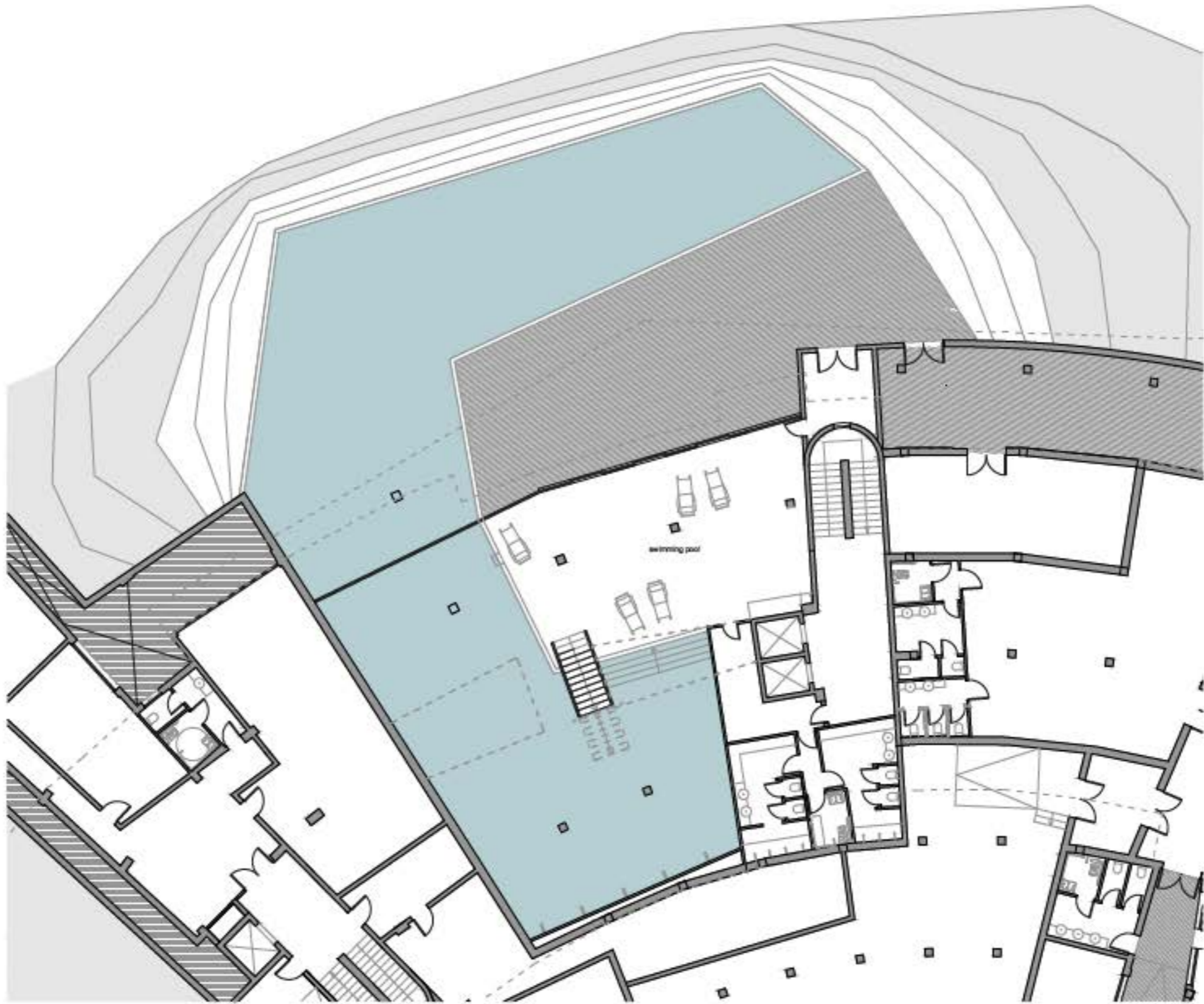




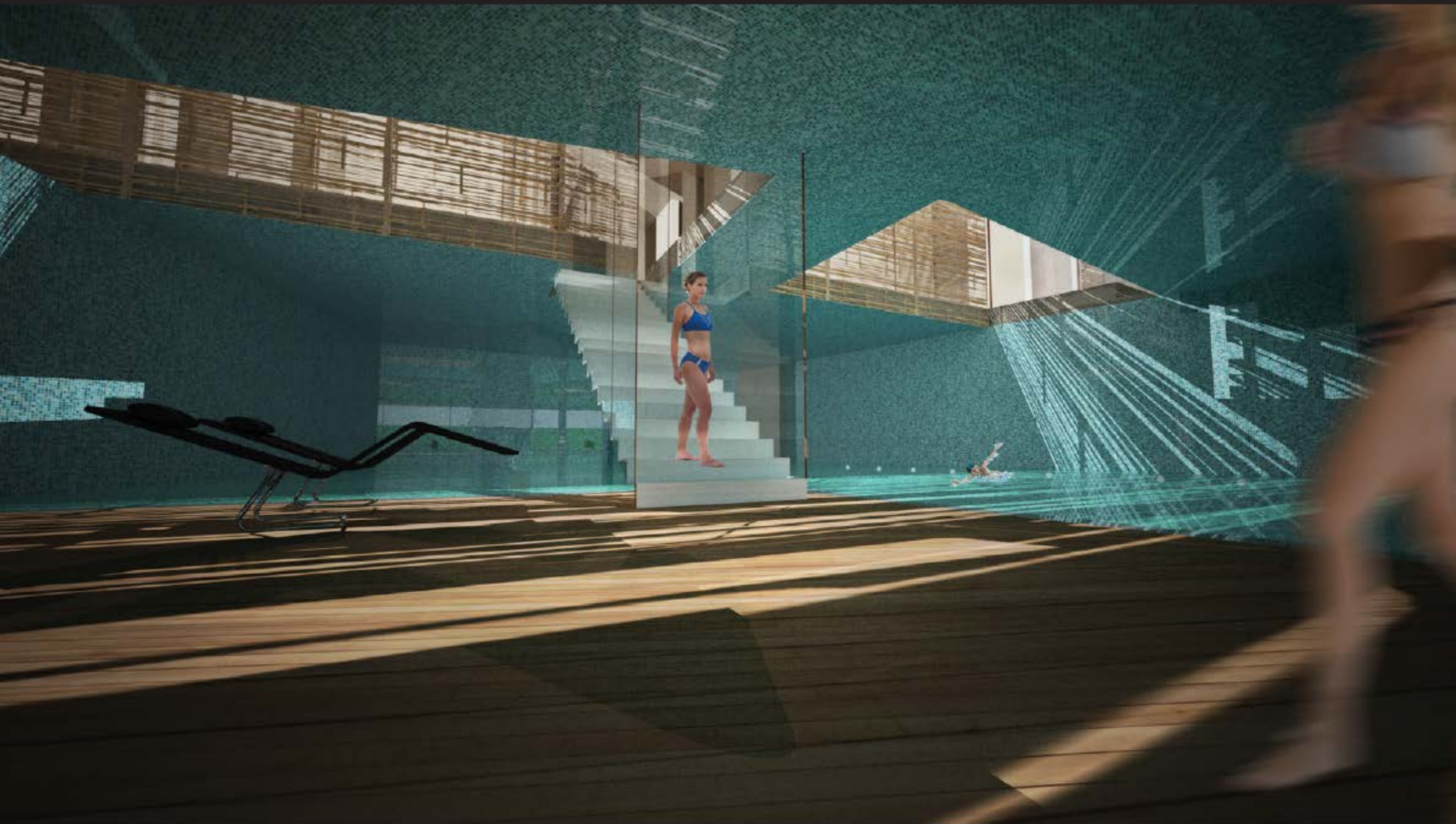
hall plan 1:100







swimming pool plan 1:200

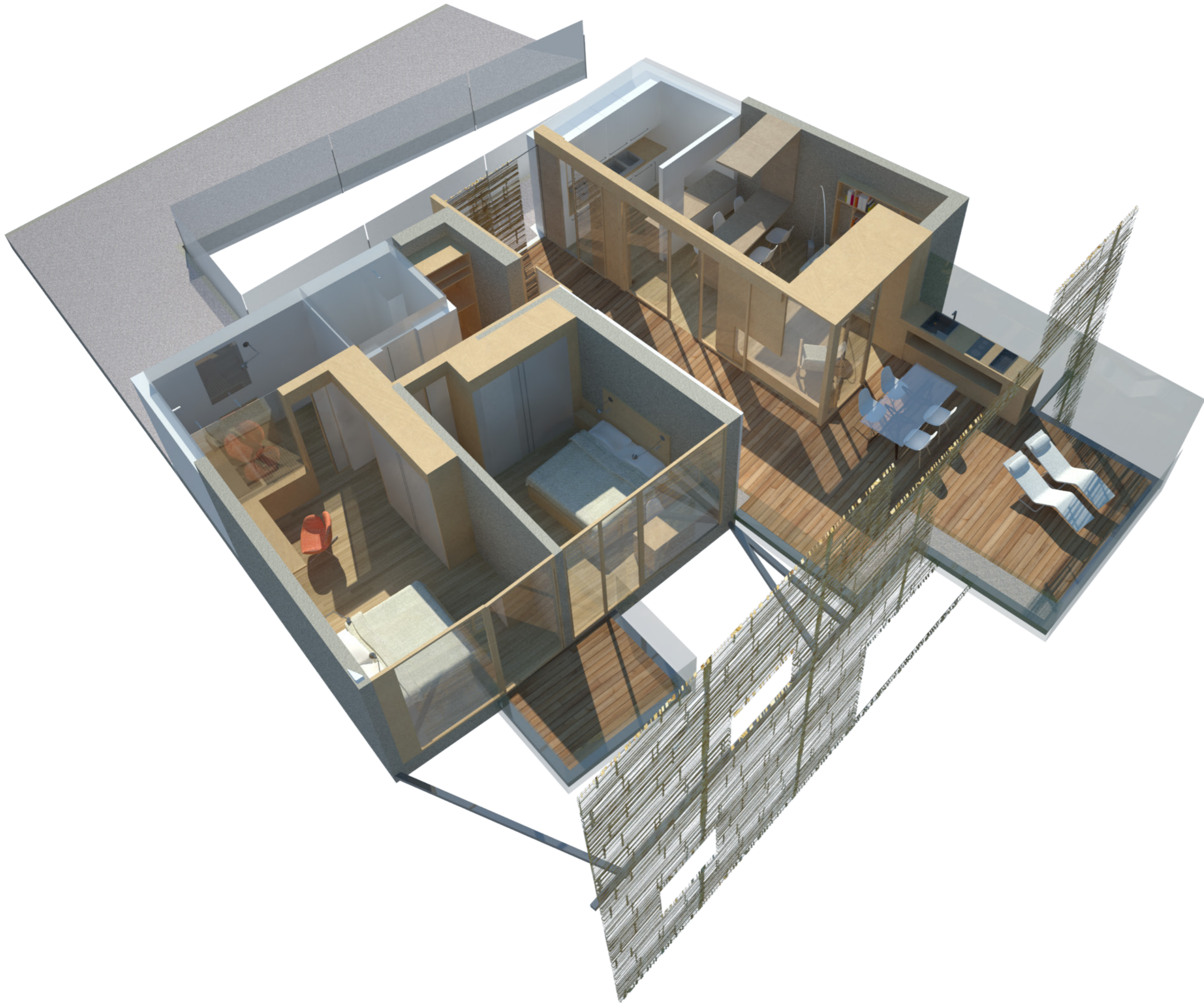


swimming pool

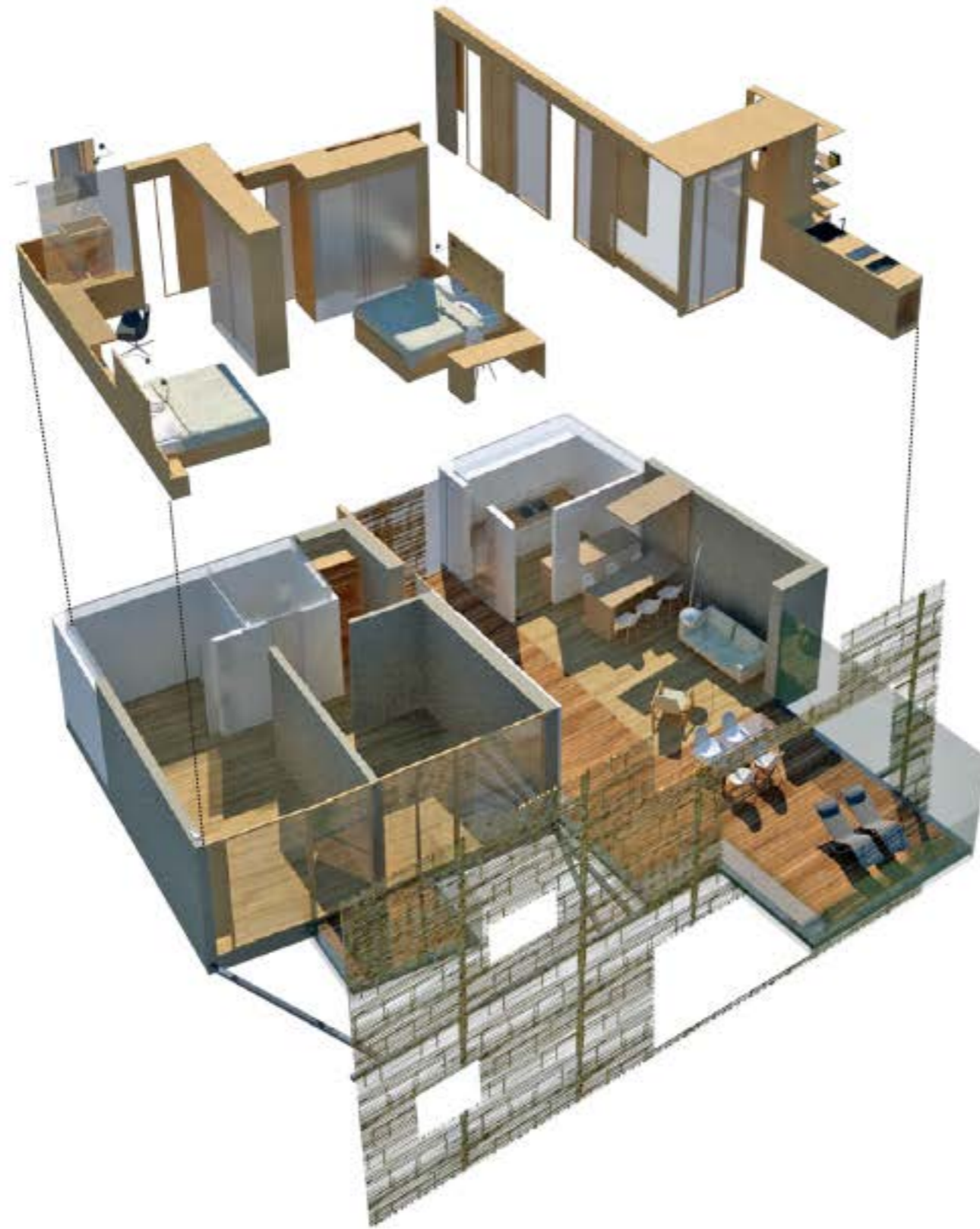




apartment plan 1:50







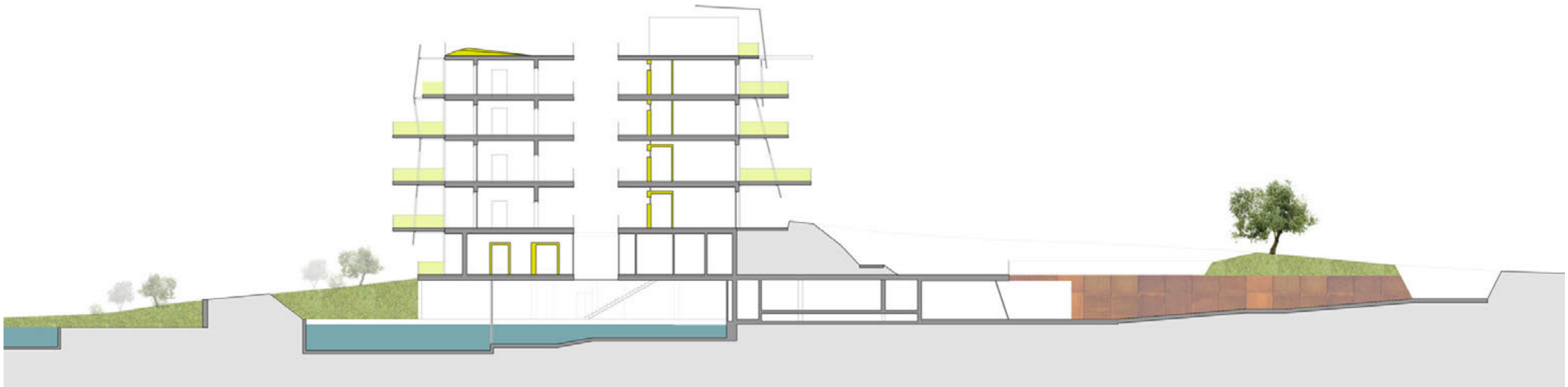


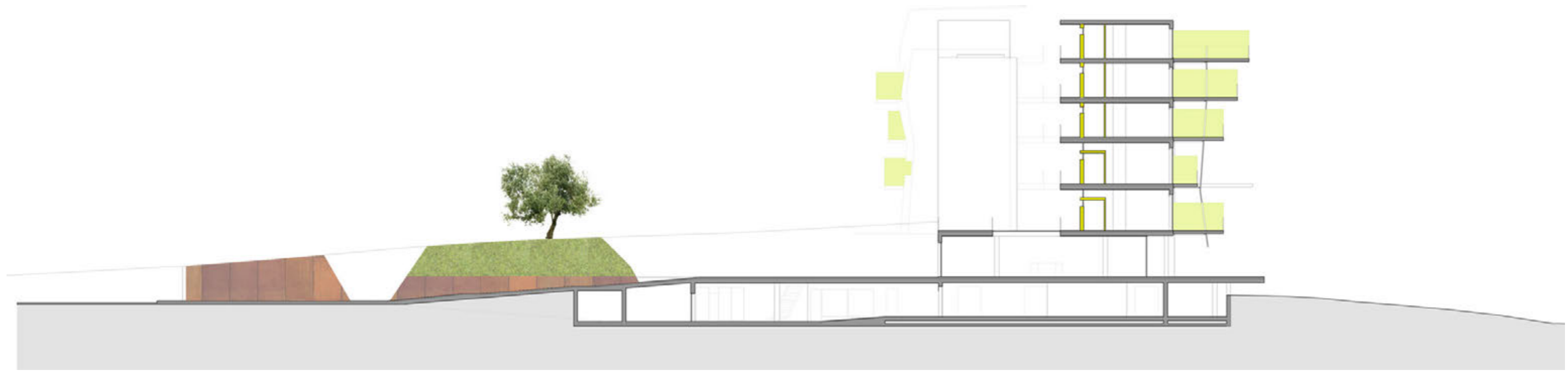


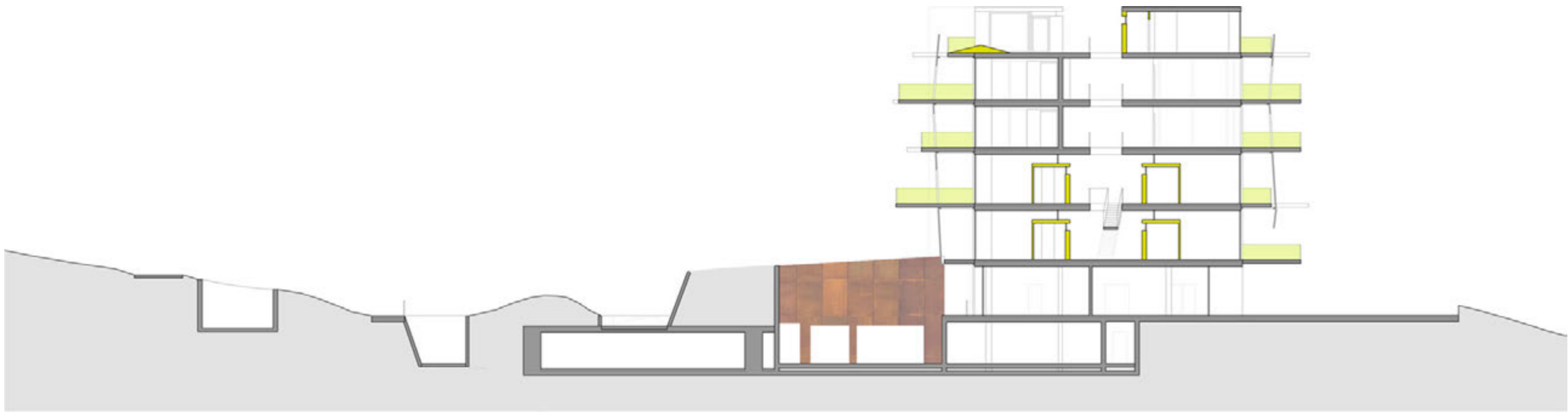




section 1-1 1:300









north view