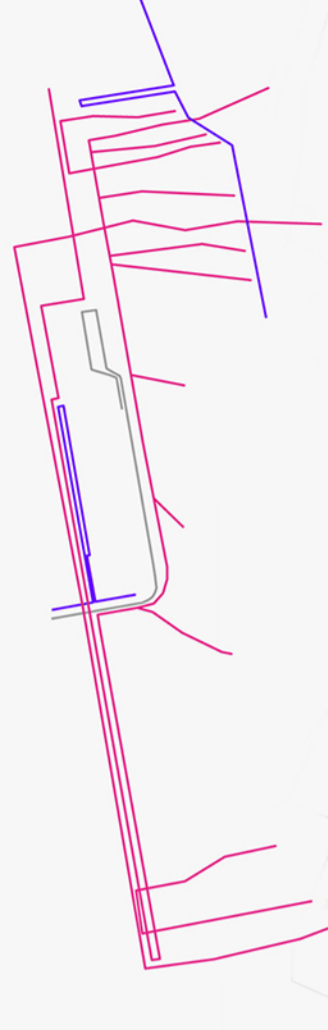


fluxes layer

BIKES AND PEOPLE
CARS
BUS



abacus linear landscape

TREES

Fraxinus ornus L.
Fraxinus common name Ash, is a genus of usually medium to large trees, mostly deciduous though a few subtropical species are evergreen. Genus Fraxinus are the true ashes, and are in Oleaceae, the olive family, along with olives and lilacs.



Ostrya carpinifolia Ostrya
is a genus of eight to ten small deciduous trees belonging to the birch family Betulaceae. Its common name is Hop-hornbeam in American English and Hop-hornbeam in British English.



The Downy Oak (Quercus pubescens) is an oak in the white oak section of the genus. It is a medium-sized deciduous tree growing up to 20 m. Forest-grown trees grow tall, while open-growing trees develop a very broad and irregular crown.



SHRUBS AND GRASS

Felce Polystichum sono piante Pteridofite, vale a dire piante prive di fiori, frutti e semi e nella classificazione botanica sono inserite tra le Briofite e le Gimnosperme. Appartengono alla grande famiglia delle Polypodiaceae



Laburnum anagyroides
Small deciduous tree or bush growing to 3m (10ft). Leaves of 3 rounded elliptical leaflets on long stems, finely haired underneath when young, grey-green to deep green in colour. Dark grey shallow fissured bark. Masses of yellow flowers in summer



Viburno lantana L.
Artisti dai rami giovani felposti grigi. Le foglie sono cuoriformi e corrugate, con margine finemente denticato, nella pagina inferiore sono bianco-grigio lamose. Fiori bianchi riuniti in formazioni ombrelliformi,



NATURAL GRASS

Graminacee rappresentano molto spesso da sole il principale componente di molti ambienti erbacei come pascoli, praterie, savane e steppe. Esse sono presenti in tutte le latitudini, adattandosi a condizioni climatiche estremamente



Anthriscus sylvestris L.
White flowers arranged in umbrella like cluster. Fernlike compound leaves have a sheathing base. Hollow, furrowed stems with lower stem hairy, flower produces two seeds. Two seeds are joined and have antennae like tips



Eryngium amethystinum (Amethyst Sea Holly) is a Mediterranean herb. Its stem is 30 to 50 cm long and is light blue to purple in colour. It flowers in the summer. The plant lives in the eastern Mediterranean and prefers dry places and soils that are rich in calcium



HORTUS

Lupinus
The species are mostly herbaceous perennial plants, but some are annual plants and a few are shrubs. They have a characteristic and easily recognised leaf shape, with soft green to grey-green leaves which in many species bear silvery hairs, often densely so.



Papaveracea
Papaver is a genus of poppies, belonging to the Papaver family. These are annual, biennial and perennial hardy, frost-tolerant plants growing natively in the temperate climates. Papaver grows in disturbed soil, under cool growing conditions.



Cosmos
They are herbaceous perennial plants. The leaves are simple, pinnate, or bipinnate, and arranged in opposite pairs. The flowers are produced in a capitulum with a ring of broad ray florets and a center of disc florets; flower color is very variable between the different species.



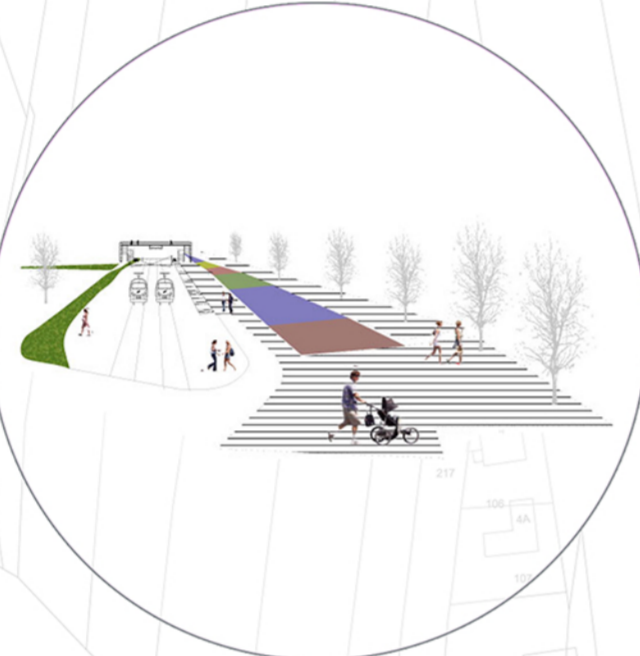
Natural Garden

1. Achillea millefolium
2. Achillea roseoalba
3. Allium carinatum pulchellum
4. Anthoxanthum odoratum
5. Anthyllus vulneraria
6. Biscutella laevigata
7. Brachypodium rupestre
8. Briza media
9. Bromopsis erecta
10. Buphtalmum salicifolium
11. Campanula rapunculoides
12. Centaurea jacea
13. Centaurea scabiosa
14. Chrysopogon gryllus
15. Cirsium pannonicum
16. Daucus carota
17. Dianthus carthusianorum subsp. sanguineus
18. Dianthus monspessulanus
19. Filipendula vulgaris
20. Gallium verum
21. Globularia punctata
22. Hieracium pilosella
23. Holcus lanatus
24. Hypochaeris maculata
25. Hypochaeris radicata
26. Knautia illyrica
27. Leucanthemum vulgare
28. Onobrychis arenaria
29. Petrohragia saxifraga
30. Peucedanum oroselinum
31. Plantago lanceolata
32. Prunella laciniata + P. grandiflora
33. Ranunculus acris
34. Ranunculus bulbosus
35. Salvia pratensis
36. Sanguisorba minor
37. Scabiosa triandra
38. Scorzonera villosa
39. Silene latifolia alba e Silene dioica
40. Silene flos-cuculi
41. Silene vulgaris
42. Trifolium montanum
43. Trifolium rubens
44. Verbascum phoeniceum

Urban Garden

1. Borragio officinalis borragine
2. Calendola officinalis calendula
3. Coreopsis
4. Facelia
5. Helianthemum salicifolium eliantemo
6. Onobrychis spp. lupinella
7. Carum Carvi L. cumino
8. Urtica dioica ortica
9. Latryus odoratus
10. Malope trifida
11. Lupinus spp.

1. TRAIN-BUS STATION / new reception and exchange area in Guben!



2. PUBLIC SPACE / moving in the linear park!

3. GARDEN MARKET / sustainable development and "km0" economy!

