

International Society for Photogrammetry and Remote Sensing

THE INTERNATIONAL ARCHIVES OF THE PHOTOGRAMMETRY, REMOTE SENSING AND SPATIAL INFORMATION SCIENCES > Dettaglio

Informazioni generali

Titolo	THE INTERNATIONAL ARCHIVES OF THE PHOTOGRAMMETRY, REMOTE SENSING AND SPATIAL INFORMATION SCIENCES
Cris ID	journal34097
Codice ANCE	E195015
Nazione	GB
ISSN	1682-1777

- Publications
- Archives
- Volumes
- Title and author search
- Full-text search
- Annals
- ISPRS Journal
- ISPRS Journal Geo-Info
- ISPRS eBulletin
- ISPRS Highlights
- Book Series
- Brochure
- ISPRS Profile
- Annual Reports
- Related Publications
- Booklets

Int. Arch. Photogramm. Remote Sens. Spatial Inf. Sci., XLIII-B4-2020, 533–537, 2020
<https://doi.org/10.5194/isprs-archives-XLIII-B4-2020-533-2020>
 © Author(s) 2020. This work is distributed under the Creative Commons Attribution 4.0 License.

Volume XLIII-B4-2020



25 Aug 2020

AN INNOVATIONAL DIGITAL TOOL IN GIS PROCEDURE: MAPPING ADRIATIC COAST IN ABRUZZO REGION TO SUPPORT DESIGN OF SLOW MOBILITY ROUTES

A. Bianchi, D. D'Uva, and A. Rolando
 DASTU, Politecnico di Milano, 20133, Milan, Italy

Keywords: Mapping, GIS, Parametric, NURBS

Abstract. The research work, object of this paper, is included in the "Fragile Territories" project of the Department of Architecture and Urban Studies of the Politecnico di Milano. It addresses the problem of mapping a territory, starting from the case studies of this issue in the contemporary scientific literature and trying to solve them by available raster/vector GIS database. The first innovation introduced with this research is the coding of an algorithm which takes as input the vectorized points from GIS and associates them with the heights transformed into z coordinates. The result is a three-dimensional grid of points. This grid is the basis for the creation of a single NURBS surface that will become the basis for the projection of all vector entities exported from the GIS into the modeler. In doing so, the result of the operation is a three-dimensional georeferenced NURBS model that contains all the vector entities in the territorial database.

[Conference paper](#) (PDF, 6485 KB)

How to cite: Bianchi, A., D'Uva, D., and Rolando, A.: AN INNOVATIONAL DIGITAL TOOL IN GIS PROCEDURE: MAPPING ADRIATIC COAST IN ABRUZZO REGION TO SUPPORT DESIGN OF SLOW MOBILITY ROUTES, Int. Arch. Photogramm. Remote Sens. Spatial Inf. Sci., XLIII-B4-2020, 533–537, <https://doi.org/10.5194/isprs-archives-XLIII-B4-2020-533-2020>, 2020.

[BibTeX](#) [EndNote](#) [Reference Manager](#) [XML](#)

Volume XLIII-B4-2020, 2020 | XXIV ISPRS Congress, Commission IV (Volume XLIII-B4-2020)

[Volumes](#)

2020 edition

Editor(s): N. Paparoditis, C. Mallet, F. Lafarge, S. Zlatanova, S. Dragicevic, G. Sithole, G. Agugiaro, J. J. Arsanjani, P. Boguslawski, M. Breunig, M. A. Brovelli, S. Christophe, A. Coltekin, M. R. Delavar, M. Al Doori, E. Guilbert, C. C. Fonte, J. Haworth, U. Isikdag, I. Ivanova, Z. Kang, K. Khoshelham, M. Koeva, M. Kokla, Y. Liu, M. Madden, M. A. Mostafavi, G. Navratil, D. R. Paudyal, C. Pettit, A. Spanò, E. Stefanakis, W. Tu, G. Vacca, L. Díaz-Vilaríño, S. Wise, H. Wu, and X. G. Zhou

[Author index](#) [Keyword index](#)

24 Aug 2020

PREFACE: THE 2020 EDITION OF THE XXIVTH ISPRS CONGRESS

C. Mallet, F. Lafarge, M. Poreba, E. Rupnik, G. Bahl, N. Girard, A. Garioud, I. Dowman, and N. Paparoditis
Int. Arch. Photogramm. Remote Sens. Spatial Inf. Sci., XLIII-B4-2020, 1–6, <https://doi.org/10.5194/isprs-archives-XLIII-B4-2020-1-2020>, 2020

24 Aug 2020

PREFACE: TECHNICAL COMMISSION IV ON SPATIAL INFORMATION SCIENCE

S. Zlatanova, S. Dragicevic, and G. Sithole
Int. Arch. Photogramm. Remote Sens. Spatial Inf. Sci., XLIII-B4-2020, 7–9, <https://doi.org/10.5194/isprs-archives-XLIII-B4-2020-7-2020>, 2020

WG IV/1 – Multi-dimensional Modelling

24 Aug 2020

INFORMATION THEORY OF CARTOGRAPHY: A FRAMEWORK FOR ENTROPY-BASED CARTOGRAPHIC COMMUNICATION THEORY

Z. Li
Int. Arch. Photogramm. Remote Sens. Spatial Inf. Sci., XLIII-B4-2020, 11–16, <https://doi.org/10.5194/isprs-archives-XLIII-B4-2020-11-2020>, 2020

24 Aug 2020

INFERRING THE SCALE AND CONTENT OF A MAP USING DEEP LEARNING

G. Touya, F. Brisebard, F. Quinton, and A. Courtial
Int. Arch. Photogramm. Remote Sens. Spatial Inf. Sci., XLIII-B4-2020, 17–24, <https://doi.org/10.5194/isprs-archives-XLIII-B4-2020-17-2020>, 2020

WG IV/2 – Ontologies, Semantics and Knowledge Representation for Geospatial Information

24 Aug 2020

A BIBLIOMETRIC STUDY OF GRAPHIC VARIABLES USED ON TACTILE MAPS

N. S. Araújo, L. S. Delazari, V. O. Fernandes, and M. A. Júnior
Int. Arch. Photogramm. Remote Sens. Spatial Inf. Sci., XLIII-B4-2020, 25–32, <https://doi.org/10.5194/isprs-archives-XLIII-B4-2020-25-2020>, 2020

24 Aug 2020

SEMANTICALLY DESCRIBING URBAN HISTORICAL BUILDINGS ACROSS DIFFERENT LEVELS OF GRANULARITY

E. Colucci, M. Kokla, M. A. Mostafavi, F. Noardo, and A. Spanò
Int. Arch. Photogramm. Remote Sens. Spatial Inf. Sci., XLIII-B4-2020, 33–40, <https://doi.org/10.5194/isprs-archives-XLIII-B4-2020-33-2020>, 2020

24 Aug 2020

FUZZY POSITIONING MODELING OF NATURAL LANGUAGE LOCATION DESCRIPTION

H. Fan, M. Yang, Y. Wang, and J. Zeng
Int. Arch. Photogramm. Remote Sens. Spatial Inf. Sci., XLIII-B4-2020, 41–46, <https://doi.org/10.5194/isprs-archives-XLIII-B4-2020-41-2020>, 2020

24 Aug 2020

ANALYSIS OF THE STATUS AND TREND OF GIS RESEARCH IN THE PAST TEN YEARS FROM 2010 TO 2019

K. Hu, Z. Dai, J. Zheng, and H. Wu
Int. Arch. Photogramm. Remote Sens. Spatial Inf. Sci., XLIII-B4-2020, 47–53, <https://doi.org/10.5194/isprs-archives-XLIII-B4-2020-47-2020>, 2020

24 Aug 2020

TOWARDS INNOVATIVE PARTICIPATION-ORIENTED PLANNING OF INFRASTRUCTURE MEASURES

M.-O. Löwner, N. C. Bandelow, M. Gerke, F. Hillen, L. Klein, A. Schmidt, and T. Siefer
Int. Arch. Photogramm. Remote Sens. Spatial Inf. Sci., XLIII-B4-2020, 55–61, <https://doi.org/10.5194/isprs-archives-XLIII-B4-2020-55-2020>, 2020

24 Aug 2020

AN AUTOMATIC SEMANTIC MAP GENERATION METHOD USING TRAJECTORY DATA

Y. Miao, X. Tang, and Z. Wang
Int. Arch. Photogramm. Remote Sens. Spatial Inf. Sci., XLIII-B4-2020, 63–67, <https://doi.org/10.5194/isprs-archives-XLIII-B4-2020-63-2020>, 2020

24 Aug 2020

AN APPROACH FOR STANDARDIZATION OF SEMANTIC MODELS FOR BUILDING RENOVATION PROCESSES

C. Mirarchi, M. N. Lucky, S. Ciuffreda, M. Signorini, S. Lupica Spagnolo, C. Bolognesi, B. Daniotti, and A. Pavan
Int. Arch. Photogramm. Remote Sens. Spatial Inf. Sci., XLIII-B4-2020, 69–76, <https://doi.org/10.5194/isprs-archives-XLIII-B4-2020-69-2020>, 2020

24 Aug 2020

AUTOMATIC ONTOLOGY GENERATION OF BIM AND GIS DATA

A. U. Usmani, M. Jadidi, and G. Sohn
Int. Arch. Photogramm. Remote Sens. Spatial Inf. Sci., XLIII-B4-2020, 77–80, <https://doi.org/10.5194/isprs-archives-XLIII-B4-2020-77-2020>, 2020

24 Aug 2020

WORLD HERITAGE MAPPING IN A STANDARD-BASED STRUCTURED GEOGRAPHICAL INFORMATION SYSTEM

M. Valesse, F. Noardo, and A. Pereira Roders
Int. Arch. Photogramm. Remote Sens. Spatial Inf. Sci., XLIII-B4-2020, 81–88, <https://doi.org/10.5194/isprs-archives-XLIII-B4-2020-81-2020>, 2020

24 Aug 2020

BUILDING FEATURES RECOGNITION FROM UNCERTAIN 3D LIDAR POINT CLOUDS: A SEMANTIC APPROACH

X.-F. Xing and M. A. Mostafavi
Int. Arch. Photogramm. Remote Sens. Spatial Inf. Sci., XLIII-B4-2020, 89–96, <https://doi.org/10.5194/isprs-archives-XLIII-B4-2020-89-2020>, 2020

WG IV/3 – Spatial Data Analysis, Statistics and Uncertainty Modelling

24 Aug 2020

LAND-USE DYNAMICS ANALYSIS BASED ON SPATIAL INTERACTIONS MODELS AND SATELLITE IMAGES TIME-SERIES

J.-F. Girres
Int. Arch. Photogramm. Remote Sens. Spatial Inf. Sci., XLIII-B4-2020, 97–101, <https://doi.org/10.5194/isprs-archives-XLIII-B4-2020-97-2020>, 2020

24 Aug 2020

AREA ESTIMATION OF MULTI-TEMPORAL GLOBAL IMPERVIOUS LAND COVER BASED ON STRATIFIED RANDOM SAMPLING

Y. Gong, H. Xie, X. Tong, Y. Jin, X. Xv, and Q. Wang

Int. Arch. Photogramm. Remote Sens. Spatial Inf. Sci., XLIII-B4-2020, 103–108, <https://doi.org/10.5194/isprs-archives-XLIII-B4-2020-103-2020>, 2020

24 Aug 2020

SOCIOECONOMIC STATUS FROM SPACE: EXAMPLE OF ESTIMATING THAILAND'S SUB-DISTRICT HOUSEHOLD INCOME BASED ON REMOTELY SENSED AND GEOSPATIAL DATA

S. Hutasavi and D. Chen

Int. Arch. Photogramm. Remote Sens. Spatial Inf. Sci., XLIII-B4-2020, 109–115, <https://doi.org/10.5194/isprs-archives-XLIII-B4-2020-109-2020>, 2020

24 Aug 2020

AUTOMATIC LABEL PLACEMENT OF AREA-FEATURES USING DEEP LEARNING

Y. Li, M. Sakamoto, T. Shinohara, and T. Satoh

Int. Arch. Photogramm. Remote Sens. Spatial Inf. Sci., XLIII-B4-2020, 117–122, <https://doi.org/10.5194/isprs-archives-XLIII-B4-2020-117-2020>, 2020

24 Aug 2020

GNSS SATELLITE VISIBILITY ANALYSIS BASED ON 3D SPATIAL INFORMATION IN URBAN AREAS

Y.-H. Lu and J.-Y. Han

Int. Arch. Photogramm. Remote Sens. Spatial Inf. Sci., XLIII-B4-2020, 123–128, <https://doi.org/10.5194/isprs-archives-XLIII-B4-2020-123-2020>, 2020

24 Aug 2020

SHIFTING CULTIVATION PRACTICES IN BARAK VALLEY, INDIA – POLICY SCENARIOS FROM A SPATIALLY EXPLICIT LAND USE MODEL

J. Misra and K. S. Rajan

Int. Arch. Photogramm. Remote Sens. Spatial Inf. Sci., XLIII-B4-2020, 129–136, <https://doi.org/10.5194/isprs-archives-XLIII-B4-2020-129-2020>, 2020

24 Aug 2020

EXPLORING THE POTENTIAL OF TRAFFIC INDEX DATA TO ANALYZE ESSENTIAL TRAFFIC IMPACT IN DEVELOPING CITIES

T. Moyo, A. Kibangou, and W. Musakwa

Int. Arch. Photogramm. Remote Sens. Spatial Inf. Sci., XLIII-B4-2020, 137–141, <https://doi.org/10.5194/isprs-archives-XLIII-B4-2020-137-2020>, 2020

24 Aug 2020

ESTIMATING BUILT-UP AREA CHANGE IN ULAANBAATAR CITY, MONGOLIA

P. Myagmarseren, I. Myagmarjav, N. Enkhuyaa, G. Byambakhuu, and T. Bazarkhand

Int. Arch. Photogramm. Remote Sens. Spatial Inf. Sci., XLIII-B4-2020, 143–147, <https://doi.org/10.5194/isprs-archives-XLIII-B4-2020-143-2020>, 2020

24 Aug 2020

A GIS-BASED MULTI-CRITERIA ANALYSIS ON CROPLAND SUITABILITY IN BORNUUR SOUM, MONGOLIA

E. Natsagdorj, T. Renchin, P. De Maeyer, R. Goossens, T. Van de Voorde, and B. Darkhijav

Int. Arch. Photogramm. Remote Sens. Spatial Inf. Sci., XLIII-B4-2020, 149–156, <https://doi.org/10.5194/isprs-archives-XLIII-B4-2020-149-2020>, 2020

24 Aug 2020

URBAN ECOLOGICAL SPACE CHANGES OF 338 PREFECTURE-LEVEL CITIES IN CHINA FROM 2016 TO 2017 WITH HIGH-PRECISION URBAN BOUNDARY AND LAND COVER DATA

X. Ning, H. Wang, Y. Liu, M. Hao, Q. Dong, W. Xu, X. Cai, M. Fu, Y. Liu, and W. Dong

Int. Arch. Photogramm. Remote Sens. Spatial Inf. Sci., XLIII-B4-2020, 157–160, <https://doi.org/10.5194/isprs-archives-XLIII-B4-2020-157-2020>, 2020

24 Aug 2020

FRACTAL ANALYSIS FOR AKAMURA MOUNDED TOMB AND LOCATION ESTIMATE OF YAMATAI COUNTRY

S. Ogawa and Y. Taniguchi

Int. Arch. Photogramm. Remote Sens. Spatial Inf. Sci., XLIII-B4-2020, 161–168, <https://doi.org/10.5194/isprs-archives-XLIII-B4-2020-161-2020>, 2020

24 Aug 2020

MONITORING SPATIAL BEHAVIOR OF PASTORALIST SHEEP THROUGH GPS, LIDAR DATA AND VNIR IMAGE

J. Plaza, C. Palacios, M. Sánchez-García, M. Criado, J. Nieto, and N. Sánchez

Int. Arch. Photogramm. Remote Sens. Spatial Inf. Sci., XLIII-B4-2020, 169–175, <https://doi.org/10.5194/isprs-archives-XLIII-B4-2020-169-2020>, 2020

24 Aug 2020

THE IMPLEMENTATION OF A PHOTOGRAMMETRIC PROCEDURE FOR THE ADJUSTMENT OF THE OLD RASTER CADASTRAL PLANS

K. Si youcef, I. Boukerch, F. Z. Belhouari, A. M. Seddiki, and B. Takarli

Int. Arch. Photogramm. Remote Sens. Spatial Inf. Sci., XLIII-B4-2020, 177–182, <https://doi.org/10.5194/isprs-archives-XLIII-B4-2020-177-2020>, 2020

24 Aug 2020

UPDATES OF 'AW3D30' ALOS GLOBAL DIGITAL SURFACE MODEL WITH OTHER OPEN ACCESS DATASETS

J. Takaku, T. Tadono, M. Doutsu, F. Ohgushi, and H. Kai

Int. Arch. Photogramm. Remote Sens. Spatial Inf. Sci., XLIII-B4-2020, 183–189, <https://doi.org/10.5194/isprs-archives-XLIII-B4-2020-183-2020>, 2020

24 Aug 2020

AUTOMATIC REGISTRATION OF VECTOR DATA WITH OPTICAL IMAGES

Y. Tanguy, J. Michel, and G. Salgues

Int. Arch. Photogramm. Remote Sens. Spatial Inf. Sci., XLIII-B4-2020, 191–196, <https://doi.org/10.5194/isprs-archives-XLIII-B4-2020-191-2020>, 2020

24 Aug 2020

BIKEMI BIKE-SHARING SERVICE EXPLORATORY ANALYSIS ON MOBILITY PATTERNS

J. F. Toro, D. Carrion, M. A. Brovelli, and M. Percoco

Int. Arch. Photogramm. Remote Sens. Spatial Inf. Sci., XLIII-B4-2020, 197–203, <https://doi.org/10.5194/isprs-archives-XLIII-B4-2020-197-2020>, 2020

24 Aug 2020

ADAPTATION OF PARKING BEHAVIOUR TO PRICE-POLICY ADJUSTMENTS IN TAIPEI CITY: PATTERNS AND SPATIAL ANALYSIS

M. C. Tsai, S. van Gassel, and T. C. Lin

Int. Arch. Photogramm. Remote Sens. Spatial Inf. Sci., XLIII-B4-2020, 205–212, <https://doi.org/10.5194/isprs-archives-XLIII-B4-2020-205-2020>, 2020

24 Aug 2020

CITY-SCALE TAXI DEMAND PREDICTION USING MULTISOURCE URBAN GEOSPATIAL DATA

J. Yan, L. Xiang, C. Wu, and H. Wu

Int. Arch. Photogramm. Remote Sens. Spatial Inf. Sci., XLIII-B4-2020, 213–220, <https://doi.org/10.5194/isprs-archives-XLIII-B4-2020-213-2020>, 2020

WG IV/4 – Collaborative Crowdsourced Cloud Mapping (C3M)

24 Aug 2020

EDUCATIONAL MATERIAL DEVELOPMENT ON MOBILE SPATIAL DATA COLLECTION USING OPEN SOURCE GEOSPATIAL TECHNOLOGIES

B. Anbaroğlu, I. B. Coşkun, M. A. Brovelli, T. Obukhov, and S. Coetzee

Int. Arch. Photogramm. Remote Sens. Spatial Inf. Sci., XLIII-B4-2020, 221–227, <https://doi.org/10.5194/isprs-archives-XLIII-B4-2020-221-2020>, 2020

24 Aug 2020

MAPPING THE ACCESSIBILITY IN OPENSTREETMAP: A COMPARISON OF DIFFERENT TECHNIQUES

L. Biagi, M. A. Brovelli, and L. Stucchi

Int. Arch. Photogramm. Remote Sens. Spatial Inf. Sci., XLIII-B4-2020, 229–236, <https://doi.org/10.5194/isprs-archives-XLIII-B4-2020-229-2020>, 2020

24 Aug 2020

VGI VISUALISATION TO SUPPORT PARTICIPATORY LAKE MONITORING: THE CASE STUDY OF SIMILE PROJECT

C. A. Biraghi, E. Pessina, D. Carrion, and M. A. Brovelli

Int. Arch. Photogramm. Remote Sens. Spatial Inf. Sci., XLIII-B4-2020, 237–244, <https://doi.org/10.5194/isprs-archives-XLIII-B4-2020-237-2020>, 2020

24 Aug 2020

CROWDSOURCING WATER QUALITY WITH THE SIMILE APP

D. Carrion, E. Pessina, C. A. Biraghi, and G. Bratic

Int. Arch. Photogramm. Remote Sens. Spatial Inf. Sci., XLIII-B4-2020, 245–251, <https://doi.org/10.5194/isprs-archives-XLIII-B4-2020-245-2020>, 2020

24 Aug 2020

COLLABORATIVE NOISE MAPPING USING SMARTPHONE

R. Dubey, S. Bharadwaj, M. I. Zafar, V. Bhushan Sharma, and S. Biswas

Int. Arch. Photogramm. Remote Sens. Spatial Inf. Sci., XLIII-B4-2020, 253–260, <https://doi.org/10.5194/isprs-archives-XLIII-B4-2020-253-2020>, 2020

24 Aug 2020

INTEGRATION OF AUTHORITATIVE AND VOLUNTEERED GEOGRAPHIC INFORMATION FOR UPDATING URBAN MAPPING: CHALLENGES AND POTENTIALS

V. O. Fernandes, E. N. Elias, and A. Zipf

Int. Arch. Photogramm. Remote Sens. Spatial Inf. Sci., XLIII-B4-2020, 261–268, <https://doi.org/10.5194/isprs-archives-XLIII-B4-2020-261-2020>, 2020

24 Aug 2020

DESIGN OF A CROWDSOURCED 3D CADASTRAL TECHNICAL SOLUTION

M. Gkeli, C. Potsiou, and C. Ioannidis

Int. Arch. Photogramm. Remote Sens. Spatial Inf. Sci., XLIII-B4-2020, 269–276, <https://doi.org/10.5194/isprs-archives-XLIII-B4-2020-269-2020>, 2020

24 Aug 2020

AN OPEN IT INFRASTRUCTURE FOR GREEN TOURISM MANAGEMENT AND PROMOTION: THE INSUBRI.PARKS PROJECT

D. Oxoli, V. Terza, M. Cannata, and M. A. Brovelli

Int. Arch. Photogramm. Remote Sens. Spatial Inf. Sci., XLIII-B4-2020, 277–281, <https://doi.org/10.5194/isprs-archives-XLIII-B4-2020-277-2020>, 2020

24 Aug 2020

THE KEY ROLE OF GEOGRAPHIC INFORMATION IN EXPOSOMICS: THE EXAMPLE OF THE H2020 PULSE PROJECT

D. Pala, L. Annovazzi-Lodi, R. Bellazzi, N. Fiscante, M. Franzini, C. Larizza, A. Pogliaghi, L. Raso, M. T. Rocca, F. Sapio, and V. Casella

Int. Arch. Photogramm. Remote Sens. Spatial Inf. Sci., XLIII-B4-2020, 283–289, <https://doi.org/10.5194/isprs-archives-XLIII-B4-2020-283-2020>, 2020

24 Aug 2020

POTENTIAL OF GEOLOCATED CROWDSOURCED IMAGE POSTS IN PREDICTING AN EARLY ESTIMATE OF THE PATTERNS OF STRUCTURAL DAMAGE FOLLOWING A HURRICANE

K. Spasenovic, D. Carrion, and F. Migliaccio

Int. Arch. Photogramm. Remote Sens. Spatial Inf. Sci., XLIII-B4-2020, 291–297, <https://doi.org/10.5194/isprs-archives-XLIII-B4-2020-291-2020>, 2020

24 Aug 2020

INVESTIGATING THE COMPLETENESS AND OMISSION ROADS OF OPENSTREETMAP DATA IN HUBEI, CHINA BY COMPARING WITH STREET MAP AND STREET VIEW

Q. Zhou and H. Lin

Int. Arch. Photogramm. Remote Sens. Spatial Inf. Sci., XLIII-B4-2020, 299–306, <https://doi.org/10.5194/isprs-archives-XLIII-B4-2020-299-2020>, 2020**WG IV/5 – Indoor/Outdoor Seamless Modelling, LBS and Mobility**

25 Aug 2020

DEFINITION OF A METHODOLOGY TO DERIVE ROAD NETWORK FUNCTIONAL HIERARCHY CLASSES USING CAR TRACKING DATA

A. Ajmar, E. Arco, and P. Boccardo

Int. Arch. Photogramm. Remote Sens. Spatial Inf. Sci., XLIII-B4-2020, 307–312, <https://doi.org/10.5194/isprs-archives-XLIII-B4-2020-307-2020>, 2020

25 Aug 2020

TOWARDS SEAMLESS INDOOR-OUTDOOR POSITIONING: THE IOPES PROJECT APPROACH

E. Angelats, J. A. Navarro, and E. Parés

Int. Arch. Photogramm. Remote Sens. Spatial Inf. Sci., XLIII-B4-2020, 313–319, <https://doi.org/10.5194/isprs-archives-XLIII-B4-2020-313-2020>, 2020

25 Aug 2020

MODELING OF EMERGENCY EVACUATION IN BUILDING FIRE

H. Bayat, M. R. Delavar, W. Barghi, S. A. EslamiNezhad, P. Hanachi, and S. Zlatanova

Int. Arch. Photogramm. Remote Sens. Spatial Inf. Sci., XLIII-B4-2020, 321–327, <https://doi.org/10.5194/isprs-archives-XLIII-B4-2020-321-2020>, 2020

25 Aug 2020

REINFORCEMENT LEARNING HELPS SLAM: LEARNING TO BUILD MAPS

N. Botteghi, B. Sirmacek, R. Schulte, M. Poel, and C. Brune

Int. Arch. Photogramm. Remote Sens. Spatial Inf. Sci., XLIII-B4-2020, 329–335, <https://doi.org/10.5194/isprs-archives-XLIII-B4-2020-329-2020>, 2020

25 Aug 2020

TOWARDS INDOORGML 2.0: UPDATES AND CASE STUDY ILLUSTRATIONS

A. A. Diakitè, S. Zlatanova, A. F. M. Alattas, and K. J. Li

Int. Arch. Photogramm. Remote Sens. Spatial Inf. Sci., XLIII-B4-2020, 337–344, <https://doi.org/10.5194/isprs-archives-XLIII-B4-2020-337-2020>, 2020

25 Aug 2020

PATH PLANNING FOR INDOOR CONTACT INSPECTION TASKS WITH UAVS

L. M. González-deSantos, J. Martínez-Sánchez, H. González-Jorge, and P. Anas

Int. Arch. Photogramm. Remote Sens. Spatial Inf. Sci., XLIII-B4-2020, 345–351, <https://doi.org/10.5194/isprs-archives-XLIII-B4-2020-345-2020>, 2020

25 Aug 2020

RESEARCH ON SEMANTIC-ASSISTED SLAM IN COMPLEX DYNAMIC INDOOR ENVIRONMENT

C. Li, Z. Kang, J. Yang, F. Li, and Y. Wang

Int. Arch. Photogramm. Remote Sens. Spatial Inf. Sci., XLIII-B4-2020, 353–359, <https://doi.org/10.5194/isprs-archives-XLIII-B4-2020-353-2020>, 2020

25 Aug 2020

A COMPLETE FOS APPROACH FOR INDOOR CROWDSOURCED MAPPING: CASE STUDY ON SAPIENZA UNIVERSITY OF ROME FACULTIES

A. Mascitelli, M. Ravanelli, S. Mattoccia, C. Berardocco, and A. Mazzoni

Int. Arch. Photogramm. Remote Sens. Spatial Inf. Sci., XLIII-B4-2020, 361–365, <https://doi.org/10.5194/isprs-archives-XLIII-B4-2020-361-2020>, 2020

25 Aug 2020

RIDE VIBRATIONS: TOWARDS COMFORT-BASED BICYCLE NAVIGATION

O. Wage, U. Feuerhake, C. Koetsier, A. Ponick, N. Schild, T. Beening, and S. Dare

Int. Arch. Photogramm. Remote Sens. Spatial Inf. Sci., XLIII-B4-2020, 367–373, <https://doi.org/10.5194/isprs-archives-XLIII-B4-2020-367-2020>, 2020

25 Aug 2020

COLLABORATIVE WI-FI FINGERPRINTING INDOOR POSITIONING USING NEAR RELATION

Y. Wang, W. Wang, X. Li, W. Zhang, and R. Guo

Int. Arch. Photogramm. Remote Sens. Spatial Inf. Sci., XLIII-B4-2020, 375–380, <https://doi.org/10.5194/isprs-archives-XLIII-B4-2020-375-2020>, 2020

25 Aug 2020

AN APPROACH ON ADVANCED UNSCENTED KALMAN FILTER FROM MOBILE ROBOT-SLAM

L. Yan and L. Zhao

Int. Arch. Photogramm. Remote Sens. Spatial Inf. Sci., XLIII-B4-2020, 381–389, <https://doi.org/10.5194/isprs-archives-XLIII-B4-2020-381-2020>, 2020

25 Aug 2020

A 3D MAP AIDED DEEP LEARNING BASED INDOOR LOCALIZATION SYSTEM FOR SMART DEVICES

Y. Yang, C. Toth, and D. Brzezinska

Int. Arch. Photogramm. Remote Sens. Spatial Inf. Sci., XLIII-B4-2020, 391–397, <https://doi.org/10.5194/isprs-archives-XLIII-B4-2020-391-2020>, 2020**WG IV/6 – SDI: Internet of Things and Spatial Decision Support**

25 Aug 2020

A MULTI CRITERIA DECISION URBAN DEVELOPMENT FRAMEWORK FOR LAND EXPROPRIATION IN SOUTH AFRICA: A STRATEGIC APPROACH

B. T. Mokoena and J. P. Sebola

Int. Arch. Photogramm. Remote Sens. Spatial Inf. Sci., XLIII-B4-2020, 399–407, <https://doi.org/10.5194/isprs-archives-XLIII-B4-2020-399-2020>, 2020

25 Aug 2020

DEVELOPING AN INTELLIGENT FIRE ALARMING, MONITORING AND RESCUING SYSTEM USING UAV

J. Nembhmani, A. Yadav, and S. Biswas

Int. Arch. Photogramm. Remote Sens. Spatial Inf. Sci., XLIII-B4-2020, 409–414, <https://doi.org/10.5194/isprs-archives-XLIII-B4-2020-409-2020>, 2020

25 Aug 2020

CREATION OF HIGH DEFINITION MAP FOR AUTONOMOUS DRIVING

F. Tsushima, N. Kishimoto, Y. Okada, and W. Che

Int. Arch. Photogramm. Remote Sens. Spatial Inf. Sci., XLIII-B4-2020, 415–420, <https://doi.org/10.5194/isprs-archives-XLIII-B4-2020-415-2020>, 2020**WG IV/7 – Geo-Data Management**

25 Aug 2020

CRYPTO-SPATIAL: AN OPEN STANDARDS SMART CONTRACTS LIBRARY FOR BUILDING GEOSPATIALLY ENABLED DECENTRALIZED APPLICATIONS ON THE ETHEREUM BLOCKCHAIN

A. Benahmed Dahou

Int. Arch. Photogramm. Remote Sens. Spatial Inf. Sci., XLIII-B4-2020, 421–426, <https://doi.org/10.5194/isprs-archives-XLIII-B4-2020-421-2020>, 2020

25 Aug 2020

INTEGRATION OF HISTORICAL GIS DATA IN A HBIM SYSTEM

N. Bruno, F. Rechichi, C. Achille, A. Zerbi, R. Roncella, and F. Fassi

Int. Arch. Photogramm. Remote Sens. Spatial Inf. Sci., XLIII-B4-2020, 427–434, <https://doi.org/10.5194/isprs-archives-XLIII-B4-2020-427-2020>, 2020

25 Aug 2020

TOWARDS APPLICATION OF LANDINFRA STANDARD FOR HIGHWAY MANAGEMENT IN KOREA

M. Buuveibaatar, M. G. Kim, and S. P. Shin

Int. Arch. Photogramm. Remote Sens. Spatial Inf. Sci., XLIII-B4-2020, 435–439, <https://doi.org/10.5194/isprs-archives-XLIII-B4-2020-435-2020>, 2020

25 Aug 2020

COST EFFECTIVE SPHERICAL PHOTOGRAMMETRY: A NOVEL FRAMEWORK FOR THE SMART MANAGEMENT OF COMPLEX URBAN ENVIRONMENTS

S. Chiappini, A. Fini, E. S. Malinverni, E. Frontoni, G. Racioppi, and R. Pierdicca

Int. Arch. Photogramm. Remote Sens. Spatial Inf. Sci., XLIII-B4-2020, 441–448, <https://doi.org/10.5194/isprs-archives-XLIII-B4-2020-441-2020>, 2020

25 Aug 2020

PERFORMANCE MATTERS ON IDENTIFICATION OF ORIGIN-DESTINATION MATRIX ON BIG GEOSPATIAL DATA

İ. B. Coşkun, A. Çakır, and B. Anbaroğlu

Int. Arch. Photogramm. Remote Sens. Spatial Inf. Sci., XLIII-B4-2020, 449–454, <https://doi.org/10.5194/isprs-archives-XLIII-B4-2020-449-2020>, 2020

25 Aug 2020

DBSCAN OPTIMIZATION FOR IMPROVING MARINE TRAJECTORY CLUSTERING AND ANOMALY DETECTION

X. Han, C. Armenakis, and M. Jadidi

Int. Arch. Photogramm. Remote Sens. Spatial Inf. Sci., XLIII-B4-2020, 455–461, <https://doi.org/10.5194/isprs-archives-XLIII-B4-2020-455-2020>, 2020

25 Aug 2020

RAPID VISUAL PRESENTATION TO SUPPORT GEOSPATIAL BIG DATA PROCESSING

E. Levin, W. Roland, R. Habibi, Z. An, and R. Shults

Int. Arch. Photogramm. Remote Sens. Spatial Inf. Sci., XLIII-B4-2020, 463–470, <https://doi.org/10.5194/isprs-archives-XLIII-B4-2020-463-2020>, 2020

25 Aug 2020

DESIGN AND IMPLEMENTATION OF TRAJECTORY DATA MANAGEMENT AND ANALYSIS TECHNOLOGY FRAMEWORK BASED ON SPATIOTEMPORAL GRID MODEL

J. Li, J. Q. Liu, X. L. Mei, W. T. Sun, Q. Huang, Y. Y. Zhang, L. W. Qiao, and C. Y. Zhang

Int. Arch. Photogramm. Remote Sens. Spatial Inf. Sci., XLIII-B4-2020, 471–476, <https://doi.org/10.5194/isprs-archives-XLIII-B4-2020-471-2020>, 2020

25 Aug 2020

A NEW CLOUD-EDGE-TERMINAL RESOURCES COLLABORATIVE SCHEDULING FRAMEWORK FOR MULTI-LEVEL VISUALIZATION TASKS OF LARGE-SCALE SPATIO-TEMPORAL DATA

X. M. Li, W. X. Wang, S. J. Tang, J. Z. Xia, Z. G. Zhao, Y. Li, Y. Zheng, and R. Z. Guo

Int. Arch. Photogramm. Remote Sens. Spatial Inf. Sci., XLIII-B4-2020, 477–483, <https://doi.org/10.5194/isprs-archives-XLIII-B4-2020-477-2020>, 2020

25 Aug 2020

TOWARDS INTELLIGENT GEO-DATABASE SUPPORT FOR EARTH SYSTEM OBSERVATION: IMPROVING THE PREPARATION AND ANALYSIS OF BIG SPATIO-TEMPORAL RASTER DATA

N. Mazroob Semnani, M. Breunig, M. Al-Doori, A. Heck, P. Kuper, and H. Kutterer

Int. Arch. Photogramm. Remote Sens. Spatial Inf. Sci., XLIII-B4-2020, 485–492, <https://doi.org/10.5194/isprs-archives-XLIII-B4-2020-485-2020>, 2020

25 Aug 2020

CHIMERA: A BIM+GIS SYSTEM FOR CULTURAL HERITAGE

F. Rechichi

Int. Arch. Photogramm. Remote Sens. Spatial Inf. Sci., XLIII-B4-2020, 493–500, <https://doi.org/10.5194/isprs-archives-XLIII-B4-2020-493-2020>, 2020

25 Aug 2020

BUILDING A MODEL FOR RESERVOIR CHARACTERISATION IN GIS USING MACHINE LEARNING

A. Singh, P. Bhardwaj, and S. Biswas

Int. Arch. Photogramm. Remote Sens. Spatial Inf. Sci., XLIII-B4-2020, 501–506, <https://doi.org/10.5194/isprs-archives-XLIII-B4-2020-501-2020>, 2020

25 Aug 2020

A HIGHLY SCALABLE DATA MANAGEMENT SYSTEM FOR POINT CLOUD AND FULL WAVEFORM LIDAR DATA

A. V. Vo, D. F. Laefer, M. Trifkovic, C. N. L. Hewage, M. Bertolotto, N. A. Le-Khac, and U. Oferdinger

Int. Arch. Photogramm. Remote Sens. Spatial Inf. Sci., XLIII-B4-2020, 507–512, <https://doi.org/10.5194/isprs-archives-XLIII-B4-2020-507-2020>, 2020

25 Aug 2020

A NEW GEOGRAPHIC CONTEXT MEASURE TO SIMILARITY ASSESSMENT BASED ON THE SHAPE CONTEXT DESCRIPTOR

E. M. A. Xavier, M. A. Ureña-Cámara, and F. J. Ariza-López

Int. Arch. Photogramm. Remote Sens. Spatial Inf. Sci., XLIII-B4-2020, 513–517, <https://doi.org/10.5194/isprs-archives-XLIII-B4-2020-513-2020>, 2020

WG IV/8 – GeoComputation and GeoSimulation

25 Aug 2020

ACCURACY ASSESSMENT OF DIFFERENT ERROR ADJUSTMENT METHODS IN CLOSED TRAVERSE NETWORKS; STUDYING THE IMPACT OF DIFFERENT OBSERVATION ERROR SETUPS IN DIFFERENT GEOMETRICAL CONFIGURATIONS

H. Amini and S. Mehrdad

Int. Arch. Photogramm. Remote Sens. Spatial Inf. Sci., XLIII-B4-2020, 519–525, <https://doi.org/10.5194/isprs-archives-XLIII-B4-2020-519-2020>, 2020

25 Aug 2020

MIXED GEOSPATIAL METHODS BASELINE STUDY TO EVALUATE AND MODEL GENTRIFICATION ALONG THE WESTSIDE ATLANTA BELTLINE, USA

A. Aragón, M. C. Johnson Gaither, and M. Madden

Int. Arch. Photogramm. Remote Sens. Spatial Inf. Sci., XLIII-B4-2020, 527–531, <https://doi.org/10.5194/isprs-archives-XLIII-B4-2020-527-2020>, 2020

25 Aug 2020

AN INNOVATIONAL DIGITAL TOOL IN GIS PROCEDURE: MAPPING ADRIATIC COAST IN ABRUZZO REGION TO SUPPORT DESIGN OF SLOW MOBILITY ROUTES

A. Bianchi, D. D'Uva, and A. Rolando

Int. Arch. Photogramm. Remote Sens. Spatial Inf. Sci., XLIII-B4-2020, 533–537, <https://doi.org/10.5194/isprs-archives-XLIII-B4-2020-533-2020>, 2020

25 Aug 2020

REFORESTATION PLANNING BASED ON PLANT HARDINESS ZONES IN VITILEVU ISLAND, FIJI

D. L. Cornelio

Int. Arch. Photogramm. Remote Sens. Spatial Inf. Sci., XLIII-B4-2020, 539–543, <https://doi.org/10.5194/isprs-archives-XLIII-B4-2020-539-2020>, 2020

25 Aug 2020

DEVELOPING APACHE SPARK BASED RIPLEY'S K FUNCTIONS FOR ACCELERATING SPATIOTEMPORAL POINT PATTERN ANALYSIS

Z. Gui, Y. Wang, Z. Cui, D. Peng, J. Wu, Z. Ma, S. Luo, and H. Wu

Int. Arch. Photogramm. Remote Sens. Spatial Inf. Sci., XLIII-B4-2020, 545–552, <https://doi.org/10.5194/isprs-archives-XLIII-B4-2020-545-2020>, 2020

25 Aug 2020

CLOUD-DESKTOP REMOTE SENSING DATA MANAGEMENT TO ENSURE TIME SERIES ANALYSIS, INTEGRATION OF QGIS AND GOOGLE EARTH ENGINE

E. Panidi, I. Rykin, P. Kikin, and A. Kolesnikov

Int. Arch. Photogramm. Remote Sens. Spatial Inf. Sci., XLIII-B4-2020, 553–557, <https://doi.org/10.5194/isprs-archives-XLIII-B4-2020-553-2020>, 2020

WG IV/9 – Geovisualization, Augmented and Virtual Reality

25 Aug 2020

IMPROVING SMARTPHONE POSITION AND ATTITUDE FOR GEOSPATIAL AUGMENTED REALITY APPLICATIONS

J. Chung, H. Kim, J. Cheon, and I. Lee

Int. Arch. Photogramm. Remote Sens. Spatial Inf. Sci., XLIII-B4-2020, 559–565, <https://doi.org/10.5194/isprs-archives-XLIII-B4-2020-559-2020>, 2020

25 Aug 2020

DEVELOPING A STRATEGY FOR PRECISE 3D MODELLING OF LARGE-SCALE SCENES FOR VR

A. El Saer, C. Stentoumis, I. Kalisperakis, and P. Nomikou

Int. Arch. Photogramm. Remote Sens. Spatial Inf. Sci., XLIII-B4-2020, 567–574, <https://doi.org/10.5194/isprs-archives-XLIII-B4-2020-567-2020>, 2020

25 Aug 2020

GEO-LOCATING HISTORICAL SURVEY DATA AND IMAGES – A CASE STUDY FOR THE CANNING RIVER, PERTH, WESTERN AUSTRALIA

P. Helmholtz, Y. Mousa, T. Snow, A. Haebich, G. Piggot, J. Tonkin, and W. Lamont

Int. Arch. Photogramm. Remote Sens. Spatial Inf. Sci., XLIII-B4-2020, 575–582, <https://doi.org/10.5194/isprs-archives-XLIII-B4-2020-575-2020>, 2020

25 Aug 2020

A MULTI-PURPOSE CULTURAL HERITAGE DATA PLATFORM FOR 4D VISUALIZATION AND INTERACTIVE INFORMATION SERVICES

C. Ioannidis, S. Verykokou, S. Soile, and A.-M. Boutsi

Int. Arch. Photogramm. Remote Sens. Spatial Inf. Sci., XLIII-B4-2020, 583–590, <https://doi.org/10.5194/isprs-archives-XLIII-B4-2020-583-2020>, 2020

25 Aug 2020

BEHAVIOUR CONTROL WITH AUGMENTED REALITY SYSTEMS FOR SHARED SPACES

V. Kamalasanan and M. Sester

Int. Arch. Photogramm. Remote Sens. Spatial Inf. Sci., XLIII-B4-2020, 591–598, <https://doi.org/10.5194/isprs-archives-XLIII-B4-2020-591-2020>, 2020

25 Aug 2020

EXPLORING CULTURAL HERITAGE COLLECTIONS IN IMMERSIVE ANALYTICS: CHALLENGES, BENEFITS, AND A CASE STUDY USING VIRTUAL REALITY

K. Koebel, D. Agotai, and A. Çöltekin

Int. Arch. Photogramm. Remote Sens. Spatial Inf. Sci., XLIII-B4-2020, 599–606, <https://doi.org/10.5194/isprs-archives-XLIII-B4-2020-599-2020>, 2020

25 Aug 2020

WHEN ROMAN ANTIQUITY AND RENAISSANCE CAME TOGETHER IN VIRTUAL 3D ENVIRONMENT: 3D MODELLING CONSIDERATIONS

M. Koechl, M. Fuchs, T. Nivola, J. Koch, L. Cartier, and S. Soussoko

Int. Arch. Photogramm. Remote Sens. Spatial Inf. Sci., XLIII-B4-2020, 607–614, <https://doi.org/10.5194/isprs-archives-XLIII-B4-2020-607-2020>, 2020

25 Aug 2020

VISUALIZING LIFE IN AN INFORMAL SETTLEMENT OF SOUTH AFRICA USING WEB MAPS AND STORY MAPS

A. Z. Mdleleni, V. Rautenbach, and S. Coetzee

Int. Arch. Photogramm. Remote Sens. Spatial Inf. Sci., XLIII-B4-2020, 615–622, <https://doi.org/10.5194/isprs-archives-XLIII-B4-2020-615-2020>, 2020

25 Aug 2020

VISUALIZING MULTILAYERED GEOSPATIAL DATA IN VIRTUAL REALITY TO ASSESS PUBLIC LIGHTING

M. Spur, N. Houel, and V. Tourre

Int. Arch. Photogramm. Remote Sens. Spatial Inf. Sci., XLIII-B4-2020, 623–630, <https://doi.org/10.5194/isprs-archives-XLIII-B4-2020-623-2020>, 2020

25 Aug 2020

ESTIMATING HEIGHTS OF BUILDINGS FROM GEOTAGGED PHOTOS FOR DATA ENRICHMENT ON OPENSTREETMAP

Y. Wang, H. Fan, and W. Jiao

Int. Arch. Photogramm. Remote Sens. Spatial Inf. Sci., XLIII-B4-2020, 631–637, <https://doi.org/10.5194/isprs-archives-XLIII-B4-2020-631-2020>, 2020**WG IV10 – Advanced Geospatial Applications for Smart Cities and Regions**

25 Aug 2020

INVESTIGATING STANDARDIZED 3D INPUT DATA FOR SOLAR PHOTOVOLTAIC POTENTIALS IN THE NETHERLANDS

A. Y. Amiranti, M. N. Koeva, M. Kuffer, V. van Altna, and M. Post

Int. Arch. Photogramm. Remote Sens. Spatial Inf. Sci., XLIII-B4-2020, 639–646, <https://doi.org/10.5194/isprs-archives-XLIII-B4-2020-639-2020>, 2020

25 Aug 2020

DETERMINATION OF OPTIMAL LOCATION FOR SETTING UP CELL PHONE TOWER IN CITY ENVIRONMENT USING LIDAR DATA

S. Bharadwaj, R. Dubey, M. I. Zafar, A. Srivastava, V. Bhushan Sharma, and S. Biswas

Int. Arch. Photogramm. Remote Sens. Spatial Inf. Sci., XLIII-B4-2020, 647–654, <https://doi.org/10.5194/isprs-archives-XLIII-B4-2020-647-2020>, 2020

25 Aug 2020

DYNAMIC ASSESSMENT OF PERSONAL EXPOSURE TO AIR POLLUTION FOR EVERYONE: A SMARTPHONE-BASED APPROACH

V. Casella, M. Franzini, R. Bellazzi, C. Larizza, and D. Pala

Int. Arch. Photogramm. Remote Sens. Spatial Inf. Sci., XLIII-B4-2020, 655–663, <https://doi.org/10.5194/isprs-archives-XLIII-B4-2020-655-2020>, 2020

25 Aug 2020

MAPPING URBAN VENTILATION CORRIDORS AND ASSESSING THEIR IMPACT UPON THE COOLING EFFECT OF GREENING SOLUTIONS

A. H. M. Eldesoky, N. Colaninno, and E. Morello

Int. Arch. Photogramm. Remote Sens. Spatial Inf. Sci., XLIII-B4-2020, 665–672, <https://doi.org/10.5194/isprs-archives-XLIII-B4-2020-665-2020>, 2020

25 Aug 2020

A METHOD FOR ESTIMATING THE NUMBER OF HOUSEHOLDS IN A REGION FROM THE NUMBER OF BUILDINGS ESTIMATED BY DEEP LEARNING WITH THE ADJUSTMENT OF ITS NUMBER USING ANCILLARY DATASETS: CASE STUDY IN DJAKARTA

R. Ito, K. Hara, Y. Shimazaki, N. Mori, Y. Kani, and A. Okabe

Int. Arch. Photogramm. Remote Sens. Spatial Inf. Sci., XLIII-B4-2020, 673–678, <https://doi.org/10.5194/isprs-archives-XLIII-B4-2020-673-2020>, 2020

25 Aug 2020

USING THE SYNERGY OF QFIELD FOR COLLECTING DATA ON-SITE AND QGIS FOR INTERACTIVE MAP CREATION BY ALKIS® DATA EXTRACTION AND IMPLEMENTATION IN POSTGRESFOR URBAN PLANNING PROCESSES

H. Ostadabbas, H. Weippert, and F.-J. Behr

Int. Arch. Photogramm. Remote Sens. Spatial Inf. Sci., XLIII-B4-2020, 679–683, <https://doi.org/10.5194/isprs-archives-XLIII-B4-2020-679-2020>, 2020

25 Aug 2020

MAPPING AIR QUALITY WITH A MOBILE CROWDSOURCED AIR QUALITY MONITORING SYSTEM (C-AQM)

M. E. Parés, D. García, and F. Vázquez-Gallego

Int. Arch. Photogramm. Remote Sens. Spatial Inf. Sci., XLIII-B4-2020, 685–690, <https://doi.org/10.5194/isprs-archives-XLIII-B4-2020-685-2020>, 2020

25 Aug 2020

TOWARDS INTEGRATION OF LADM AND CITYGML FOR THE CADASTRAL SYSTEM OF TURKEY

H. G. Surmeneli, M. N. Koeva, J. A. Zevenbergen, and M. Alkan

Int. Arch. Photogramm. Remote Sens. Spatial Inf. Sci., XLIII-B4-2020, 691–698, <https://doi.org/10.5194/isprs-archives-XLIII-B4-2020-691-2020>, 2020

25 Aug 2020

URBAN 3D MODELLING METHODS: A STATE-OF-THE-ART REVIEW

Y. Ying, M. N. Koeva, M. Kuffer, and J. A. Zevenbergen

Int. Arch. Photogramm. Remote Sens. Spatial Inf. Sci., XLIII-B4-2020, 699–706, <https://doi.org/10.5194/isprs-archives-XLIII-B4-2020-699-2020>, 2020**ICWG IV/III – Global Mapping: Updating, Verification and Interoperability**

25 Aug 2020

BENCHMARKING OF HIGH-RESOLUTION LAND COVER MAPS IN AFRICA

G. Bratic, S. Peng, and M. A. Brovelli

Int. Arch. Photogramm. Remote Sens. Spatial Inf. Sci., XLIII-B4-2020, 707–714, <https://doi.org/10.5194/isprs-archives-XLIII-B4-2020-707-2020>, 2020

25 Aug 2020

POINT-TO-SURFACE MATCHING FOR DEM CORRECTION USING ICESAT DATA

H. Lee and M. Hahn

Int. Arch. Photogramm. Remote Sens. Spatial Inf. Sci., XLIII-B4-2020, 715–720, <https://doi.org/10.5194/isprs-archives-XLIII-B4-2020-715-2020>, 2020

25 Aug 2020

INTER-ANNUAL DIFFERENCE OF LAND SURFACE PHENOLOGY (LSP) TRANSACTION DATES USING TIME SERIES LANDSAT IMAGES

L. Li, J. Li, H. Yang, Z. Jiang, and L. Zhao

Int. Arch. Photogramm. Remote Sens. Spatial Inf. Sci., XLIII-B4-2020, 721–725, <https://doi.org/10.5194/isprs-archives-XLIII-B4-2020-721-2020>, 2020

25 Aug 2020

CONTENT STRUCTURE DESIGN OF NEW CENTURY EDITION OF THE NATIONAL FUNDAMENTAL GEOGRAPHIC ATLAS OF CHINA

G. Wang, D. Wang, J. Qiao, W. Zhou, and M. Chen

Int. Arch. Photogramm. Remote Sens. Spatial Inf. Sci., XLIII-B4-2020, 727–734, <https://doi.org/10.5194/isprs-archives-XLIII-B4-2020-727-2020>, 2020

25 Aug 2020

ANNUAL URBAN BUILT-UP CHANGE AREA ONLINE EXTRACTION USING LANDSAT TIME SERIES DATA

J. Zhang, H. Wu, and C. Cai

Int. Arch. Photogramm. Remote Sens. Spatial Inf. Sci., XLIII-B4-2020, 735–739, <https://doi.org/10.5194/isprs-archives-XLIII-B4-2020-735-2020>, 2020**TS – Digital twins: Vision papers**

25 Aug 2020

TACK PROJECT: TUNNEL AND BRIDGE AUTOMATIC CRACK MONITORING USING DEEP LEARNING AND PHOTOGRAMMETRY

V. Belloni, A. Sjölander, R. Ravanelli, M. Crespi, and A. Nascetti

Int. Arch. Photogramm. Remote Sens. Spatial Inf. Sci., XLIII-B4-2020, 741–745, <https://doi.org/10.5194/isprs-archives-XLIII-B4-2020-741-2020>, 2020

25 Aug 2020

AUTOMATING POWERLINE INSPECTION: A NOVEL MULTISENSOR SYSTEM FOR DATA ANALYSIS USING DEEP LEARNING

O. Kähler, S. Hochstöger, G. Kemper, and J. Birchbauer

Int. Arch. Photogramm. Remote Sens. Spatial Inf. Sci., XLIII-B4-2020, 747–754, <https://doi.org/10.5194/isprs-archives-XLIII-B4-2020-747-2020>, 2020

25 Aug 2020

HISTORICAL SENTIENT – BUILDING INFORMATION MODEL: A DIGITAL TWIN FOR THE MANAGEMENT OF MUSEUM COLLECTIONS IN HISTORICAL ARCHITECTURES

F. M. La Russa and C. Santagati

Int. Arch. Photogramm. Remote Sens. Spatial Inf. Sci., XLIII-B4-2020, 755–762, <https://doi.org/10.5194/isprs-archives-XLIII-B4-2020-755-2020>, 2020

25 Aug 2020

CURRENT SURVEYING METHODS FOR THE INTEGRATION OF ADDITIVE MANUFACTURING IN THE CONSTRUCTION PROCESS

M. Maboudi, M. Gerke, N. Hack, L. Brohmann, P. Schwerdtner, and G. Placzek

Int. Arch. Photogramm. Remote Sens. Spatial Inf. Sci., XLIII-B4-2020, 763–768, <https://doi.org/10.5194/isprs-archives-XLIII-B4-2020-763-2020>, 2020

TS – EO challenges and opportunities for the SDGs

25 Aug 2020

EARTH OBSERVATION TO SUBSTANTIATE THE SUSTAINABLE DEVELOPMENT GOAL 11: PRACTICAL CONSIDERATIONS AND EXPERIENCES FROM AUSTRIA

T. Blaschke and A. Kovács-Győri

Int. Arch. Photogramm. Remote Sens. Spatial Inf. Sci., XLIII-B4-2020, 769–774, <https://doi.org/10.5194/isprs-archives-XLIII-B4-2020-769-2020>, 2020

TS – Simulation & Visualization: How to improve the visual understanding on complex dynamics on Earth?

25 Aug 2020

ANALYSIS AND REAL-TIME VISUALIZATION OF GEO-SPATIAL DATA USING XDASH: APPLICATION TO FLAIR PROJECT

G. Berthe, V. Rouchon, M. Ben Gaid, and A. El Feki

Int. Arch. Photogramm. Remote Sens. Spatial Inf. Sci., XLIII-B4-2020, 775–779, <https://doi.org/10.5194/isprs-archives-XLIII-B4-2020-775-2020>, 2020

25 Aug 2020

VISUALIZING 3D CLIMATE DATA IN URBAN 3D MODELS

J. Gautier, S. Christophe, and M. Brédif

Int. Arch. Photogramm. Remote Sens. Spatial Inf. Sci., XLIII-B4-2020, 781–789, <https://doi.org/10.5194/isprs-archives-XLIII-B4-2020-781-2020>, 2020

25 Aug 2020

TURNING 3D DATA SURVEYS OF INTERTIDAL ZONES INTO NEW MODES OF 3D VISUALIZATION, SIMULATION AND SPATIAL INTERFACE EXPERIENCES

N. Hedley and I. Lochhead

Int. Arch. Photogramm. Remote Sens. Spatial Inf. Sci., XLIII-B4-2020, 791–794, <https://doi.org/10.5194/isprs-archives-XLIII-B4-2020-791-2020>, 2020

25 Aug 2020

VISUAL ANALYSIS OF INCONSISTENCIES IN HYDRAULIC SIMULATION DATA

O. Perrin, S. Christophe, F. Jacquinod, and O. Payrastre

Int. Arch. Photogramm. Remote Sens. Spatial Inf. Sci., XLIII-B4-2020, 795–801, <https://doi.org/10.5194/isprs-archives-XLIII-B4-2020-795-2020>, 2020

AN INNOVATIONAL DIGITAL TOOL IN GIS PROCEDURE: MAPPING ADRIATIC COAST IN ABRUZZO REGION TO SUPPORT DESIGN OF SLOW MOBILITY ROUTES

A. Bianchi¹, D. D'Uva¹*, A. Rolando¹

¹ DASTU, Politecnico di Milano, 20133, Milan, Italy - (alessandro.bianchi, domenico.duva*, andrea.rolando)@polimi.it

Commission IV, WG IV/8

KEY WORDS: Mapping, GIS, Parametric, NURBS

ABSTRACT:

The research work, object of this paper, is included in the "Fragile Territories" project of the Department of Architecture and Urban Studies of the Politecnico di Milano. It addresses the problem of mapping a territory, starting from the case studies of this issue in the contemporary scientific literature and trying to solve them by available raster/vector GIS database. The first innovation introduced with this research is the coding of an algorithm which takes as input the vectorized points from GIS and associates them with the heights transformed into z coordinates. The result is a three-dimensional grid of points. This grid is the basis for the creation of a single NURBS surface that will become the basis for the projection of all vector entities exported from the GIS into the modeler. In doing so, the result of the operation is a three-dimensional georeferenced NURBS model that contains all the vector entities in the territorial database.

1. RESEARCH FRAMEWORK AND CASE STUDY FEATURES

The research work, object of this paper, is included in the "Fragile Territories" project of the Department of Architecture and Urban Studies of the Politecnico di Milano. The aim of this research is to investigate innovative methodologies of representation that can support the design of improvements in the connections of a territory, overcoming the fragilities that prevent its organic development. The chosen case study is the *Costa dei Trabucchi*, in Abruzzo, Italy, a portion of territory that stretches along the Adriatic Sea for 45 kilometres and 10 kilometres inland. The central area of the Adriatic ridge is characterized by a particular territorial conformation in which the inhabited centres have been mainly developed in the immediate hinterland, leaving chaotically urbanized offshoots close to the coastline. Ortona and Vasto, too, the most populated urban aggregates of this stretch of coast are characterized by the same configuration, because the historic centers are higher than the sea level. The connection system of this territory is composed of the main networks running longitudinally along the coast, the A14 motorway, the railway and the S.S. 16. The transversal networks consist exclusively of roads connecting infrastructural nodes with population centres, which also lack railway stations for short distance connections. A paradigmatic case of this condition is Lanciano city center, which has both the railway station and a line that would connect it with the coast, but both are disused. On this territory there is a developing network based on soft mobility, created along the coast by the retreat of the pre-existing railway sediments, in progress at the date of this work, where solutions for slow, active and proximity tourism could contribute to encourage better uses of the territory and to improve its spatial quality. The first areas where this network is evolving are between Vasto San Salvo station in the south and Porto di Vasto station in the north. The second is located between the station of Fossacesia-Torino di Sangro in the south and Ortona in the north. The cycling areas are part of a longitudinal link project which may cross the entire study area, but at the paper drafting stage only a few stretches have been completed. Starting from this longitudinal network that is being defined, it is possible to think

of extending the connections in a transversal direction, joining the hilly inhabited areas with an enhancement of the slow mobility system, based on the decommissioned railway network already present.



Figure 1. Case study area.

2. ISSUES

At the methodological level, a reference is the National Strategy for Internal Areas programme (SNAI) developed by the Agency for Territorial Cohesion, where the main peripheral and outermost areas are identified for each region. These fragile territories are far from the poles of attraction (large and medium-sized cities) and characterised by depopulation, demographic ageing and with a degree of accessibility issues to primary services (education and health) as well as poor infrastructure. The main target of the Strategy is the adaption of the quantity and quality of education, health and mobility services, and the promotion of development projects that enhance the natural and cultural heritage of these areas, reversing the trend of abandonment. SNAI is a partner of the DASTU Department of Excellence, which intends to promote research and educational activities related to the theme of Fragile Territories, in this case, starting from the Internal Areas (AI). The document consists of a list of areas classified by regions and differentiated between pilot areas (with processes already started) and SNAI candidates. The diversity of themes and stages of advancement of AI, makes it difficult and pretextual to try to group them into survey categories. For this reason, it was decided to provide the basic indications giving, through the reference to external links, the possibility of further investigations (1).



Figure 2. Connection network in its relation with urban areas.

In this area the main connections are located along the Adriatic ridge, leaving isolated the immediate hinterland where most of the population resides. This phenomenon creates fragility because the inhabitants of these territories have to travel along the secondary road network to move from the inhabited centers to the main nodes with private vehicles due to the inefficiency of public transport. On such a network seasonal flows are added that, in proportion to the summer tourist influx, undergo

1

http://old2018.agenziacoesione.gov.it/it/arint/Selezione_aree_progetto/Istruttoria_e_documentazione_per_regione/Regione_Abruzzo/index.html

<http://www2.regione.abruzzo.it/xprogrammazione/index.asp?modello=strategiaAreeInterne&servizio=xList&stileDiv=mono&template=default&msv=futuroCo4>

2

http://focus.formez.it/sites/all/files/guida_mobilita_sostenibile_gennaio_2018_0.pdf.

increases that create fragility in the transport system that cannot absorb the periodic increase in capacity, also because of the collective connections of little effectiveness and scope. To this end, an analysis of slow connections has been hypothesized both for coastal municipalities and for hilly municipalities starting from operating railway stations. To make clear the interest of the European Community in interventions concerning these fragilities and the financial means to tackle them, reference is made to the directive "Sustainable Mobility Guide - How to finance sport, cycling and sustainable tourism with European funds" of 2018 (2).

The analysis of the connections network with a view to the development of the longitudinal links, but especially the transversal ones, would be incomplete without taking into account the orographic features of the territory. The use of traditional GIS tools has been insufficient for a quantitative analysis of the three-dimensional qualities of the case study, so it was necessary to implement ex-novo a series of tools useful for this purpose.

3. STATE OF THE ART

Territorial analyses were conducted using a GIS class software, which was used to manipulate the data provided by the Abruzzo Region database (DBTR). Additional information was integrated with a secondary database, Open Street Map (OSM) when the data in the main database were insufficient or outdated. Extracted data from the DBTR were: Digital Elevation Model (DEM), perimeters of the average dense continuous residential fabric, road, and railway network. Data extracted from OSM were: disused railway network, cycle paths, and cultural heritage.

Thanks to a Python algorithm, which works within a GIS environment, a network of slow connections from railway stations was developed. This algorithm made it possible to identify the accessibility area along the roads, having as constraints the average speed of 16 km/h (and the travel time identified in three bands, respectively 15, 25, and 35 minutes from departure. This made it possible to identify a network of roads that can be covered within certain durations. The tools for the management of the territory, generally referable to the family of GIS systems, have a wide range of uses, but are based on two-dimensional analysis. In the specific case study, it was necessary to analyze the acclivity of the land concerning road connections. An analysis of the slope was made, which has as output a raster map of the intensity and the contour lines of the territory were elaborated. Difficulties were encountered in the interaction of the slope data and roads with the raster slope data. It was possible to carry out qualitative, but not quantitative analyses.

4. SOLUTIONS

To overcome this problem, it was necessary to rely on an additional digital tool, a parametric modeler capable of handling NURBS entities. This software was combined with the basic GIS software, which managed the data import from shared databases and carried out the two-dimensional operations of vector entity modification and network analysis explained in the

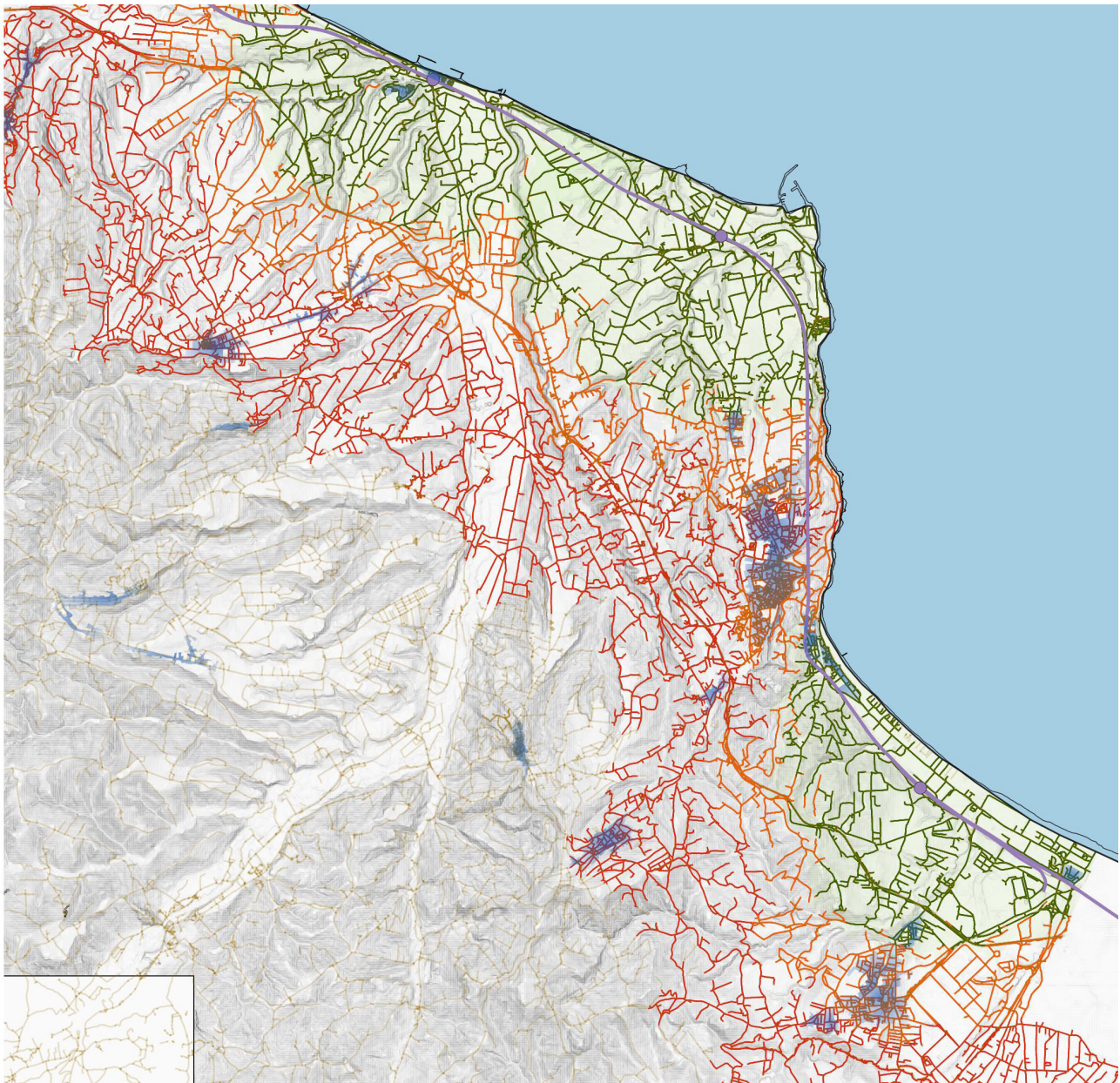


Figure 3. Soft mobility connections. Road paths originate from railway stations with cycling range of 15, 25, 35 minutes.

previous section. From the GIS it is necessary to export the vector data representing nodes and networks to the NURBS modeler. To complete the database migration work it is necessary to convert the DEM, which represents the terrain elevation raster to vector. This operation is possible through an algorithm that transforms the raster into a mesh of points. Each point belonging to this mesh is associated with a numerical height that must be transformed into a z coordinate.

The process of generating the three-dimensional model of the study area is subject to the availability of a specific type of georeferenced data. These data are required for the terrain altimetries, which are raster files with a resolution consistent with the type of analysis required and vector files for the building and networks. These data have been firstly processed with GIS software, after with a three-dimensional NURBS modeller connected to a plugin able to manage the algorithm for Computational Design operations.

For the case study of the Trabucchi coast, the cartographic database of the Abruzzo Region was used for the availability of raster and vectorial information. To activate the process of

terrain generation, the DTM digital model (with a resolution of 10x10 meters was preliminarily used) is the only one available with an adequate resolution. For the vectorial network data base the Regional Technical Cartography 2007 (CTR) was used, for the constructions the Shared Knowledge System. To assemble the entire study area (40 by 10 km) it would have been necessary to join 14 single sheets and the final model would have suffered from excessive computational slowness. It was therefore necessary to apply a GRASS algorithm to sample the DTM images, bringing the output resolution to 40x40 meters.

The DTM represents a survey of the soil surface alone without the anthropic and vegetational elements. Being a two-dimensional raster file, it was necessary to convert it into vectors in GIS environment to extract the points accompanied by their geometric coordinates, which can be read with a 3D modeler. In this way a vector shapefile is generated containing a planar grid of equidistant points with a pitch of 40 meters, each georeferenced according to the UTM-WGS84 coordinate system. In order to import this shapefile in a NURBS modeler it was necessary to design a customized Grasshopper algorithm

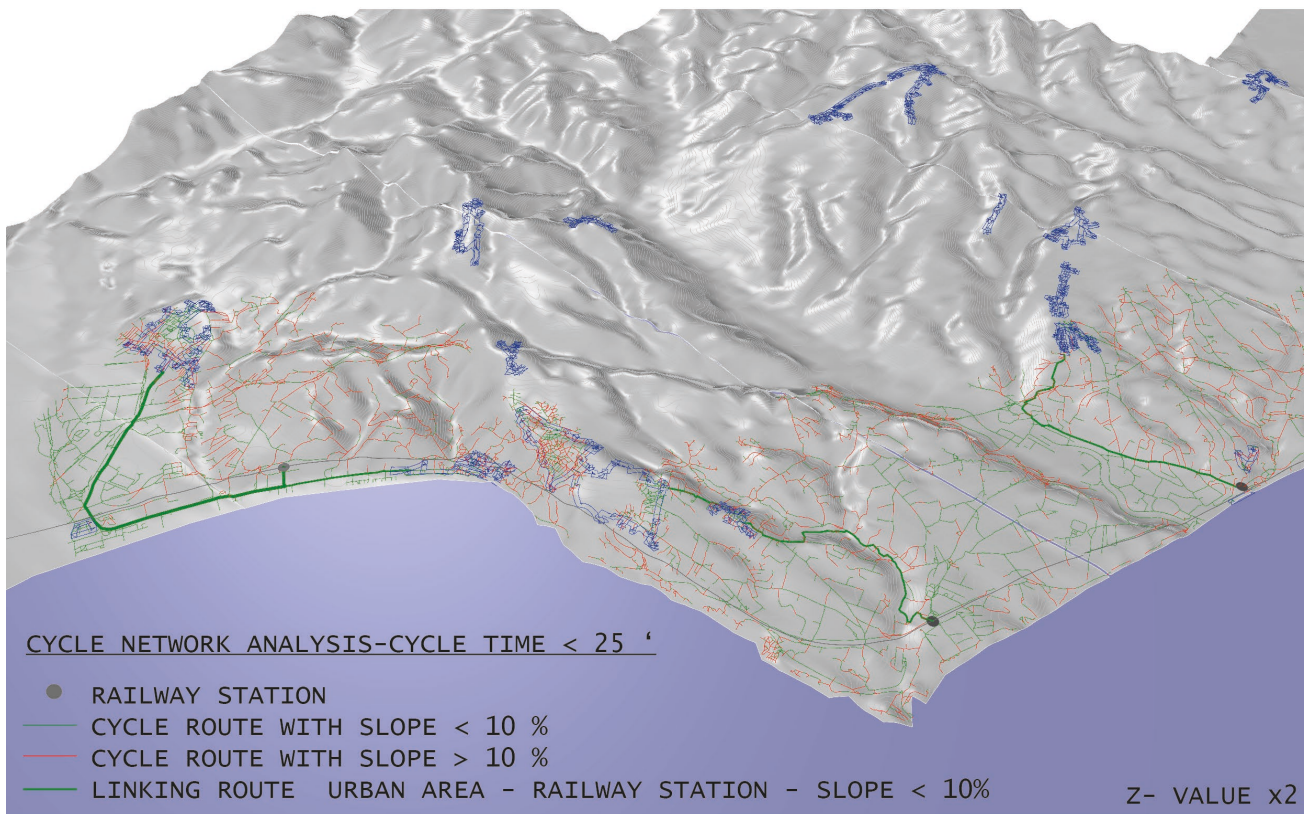


Figure 4. NURBS Model of the area. The bold green routes, which connect railway stations with hilly centers are the fastest among the paths with slope minor than 10%. The section is a rectified drawing along the left path.

that allows it to manage this type of file, usually manipulated by GIS software. The import process works, for the simplicity of algorithm construction if the points form a grid. The vector output from the raster file is often not bounded with regular edges. In this case the points that create artifacts on the edges must be removed manually. The weak point of this step is the creation of longitudinal holes when assembling together all 14 sheets of soil generated by the DTM. These holes have been manually filled with NURBS modelling; the individual sheets cannot be aligned, because they would lose their georeferencing property and it would not be possible to insert any other georeferenced elements afterwards. Once the points are imported, they are read as a list of elements distributed on a plane. In order to create the terrain surface, it was necessary to attribute to each single point the relative elevation. To do this, the numerical values of the elevations are extracted from the attributes tables - attached to the DTM file - which are assigned to the vector of displacement in positive z direction. At this step of the procedure a cloud of georeferenced points that faithfully represents a part of the territory has been obtained. To complete the surface generation, it was necessary to automatically calculate the number of points in the x and y directions. It has been chosen to extract this parameter automatically, instead of manually entering its value to increase the procedure flexibility. To calculate the number of points in the grid it is necessary to consider that they are ordered in numerical lists in which the positions are indexed. It was possible to subdivide the list into subgroups containing only the points that have the same value as x, to calculate the length of the lists. To do this the x-coordinates of each point were extracted and then stored in

separate lists, and finally their mutual equality has been tested. In this way a Boolean exclusion model was defined according to which the repeated elements in the individual lists are eliminated. At this point it was possible to count the number of elements of each sublist, an indispensable parameter for the generation of the NURBS surface. The elements of the building, extracted from the Shared Knowledge System - in the Urban and Territorial Armor section of CTR- described the settlement system through the categories: Soils: these were the result of the union of Urbanized Soils (SU), i.e. the parts of cities foreseen by the P.R.G. and already implemented, and Planned Urbanized Soils (SUP), i.e. the parts of cities foreseen by the General Regulatory Plan (P.R.G.) and not implemented. The result was a series of polygons that surrounded the SU and SUP areas, after having filtered out the portions of built-up areas of a smaller size.

At this step of the dissertation, it seems useful to explain why to use such a complex procedure when it is possible to directly extrapolate contour lines from the GIS software and the mesh based DTM model. The explanation from a mathematical and geometric point of view only would require an ad-hoc work, due to the vastness of the topic. For representation and visualization, the mesh structure is more performing because the definition of simple entities such as points and polygons is simpler and there are no topological constraints except the connections between neighbouring entities. It is difficult although to make changes to the shape when the mesh model is complex because there is no global, but only local parameterization. The NURBS model, on the contrary, has an analytically defined geometry and a very simple topology,

because any entity can be framed in a UV patch. This makes it much easier to write algorithms because they refer to a unique coordinated system related to the described object. Taking advantage of these special features of the NURBS system, it was possible to describe the three-dimensional model shown in figure 4, which represents the geometry of the study area with precision. The next step was to import the data from the road network, but the size of the file required a limitation to the areas surrounding the railway stations, defined as detailed in the previous section within the isochrona equal to 25 minutes of cycling at a speed of 16 km/h (Schantz, 2017). Within this selection of the road network, the slope p has been geometrically analyzed, considering that roads are composed of vectors with start and end.

$$P = |Z_{\text{endpoint}} - Z_{\text{startpoint}}| / \text{lenght}$$

After associating the parameter p to each single component vector, a list of vectors has been produced, whose slope is less than a given value. This set of vectors has been associated with a colour that shows only a selection of the road network of known slope. On this subnet it is possible, using an algorithm, to trace a path that connects the centers with the main nodes of the network, ensuring better accessibility.

5. CONCLUSIONS

The value of this parametric system lies in its intrinsic flexibility since once the vector network of georeferenced roads in space has been generated, it is possible to produce three-dimensional predictive analyses that are not possible in a GIS, such as inserting elements that attract routes, such as cultural elements or those peculiar to the territory. This procedure is relevant to define a strategy of design actions able to produce a more balanced use of the territory, between the coast and the hilly areas just in the background of the coastline, also considering the recent transformation of the infrastructural system. To use a parametric mapping applied to a most possible accurate three-dimensional model is essential, in order to assess the effects of the design constraints that are specific for slow mobility infrastructure. These require to be adapted precisely to the existing topography and for this, the support of a model of highest definition able to define a smooth surface is essential to support design choices, with interventions based on minimum structural and visual impact (bridges, landscaping with consistent terrain modifications). The proposed method is based on geographic and geometric information, that are useful to define a general reference system of data, necessary to define possible design options. This procedure should be implemented also with other, more qualitative oriented procedures, integrated through quality parameters and indexes defined through geographic data, interpretation of user generated contents (photographs, comment from social networks, etc), also supported by machine learning techniques (Bianchi, 2020). The research team is working in this perspective so to define a wider decisional framework that can support the decisional process in final design choices.

It is considered appropriate to develop these slow mobility strategies also in the present Covid-19 pandemic situation, in an attempt to minimize the spreading of virus infection. In these perspective, it is important to encourage forms of active and proximity tourism, also to develop an approach to mobility that allows us to rediscover in a sustainable way the areas less frequented by the mass tourism, at the same time taking into careful account their internal fragility. In short, a dual-objective strategy is confirmed: on the one hand the improve the uses of the internal areas of the Country in order to reduce present

condition of social and economic marginality; on the other hand - and certainly not secondary - an attempt to consider the actual need of social distancing as an opportunity to encourage off-the-beaten-tracks tourist destinations extended on the whole territory, through means of transport that have the least impact on fragile territories and on the spread of the virus itself. This design-oriented approach to territorial strategies will produce long term, durable benefits of which both the insiders (permanent inhabitants) and the outsiders (temporary inhabitants or tourists) will benefit.

ACKNOWLEDGEMENTS

The methodology was developed with the essential collaboration of Federico Eugeni from the University of L'Aquila.

REFERENCES

- Bianchi, A., D'Uva, D., Rolando, A., Scandiffio, A., 2020, *A view from the track: measuring spatial quality of slow mobility routes: Possible integration of GIS and Machine Learning based methods*, paper in Connecting, Drawing for weaving relationships, Convegno Internazionale dei Docenti delle Discipline della Rappresentazione, Reggio Calabria, under publication, sept 2020
- Burry M., 2011, *Scripting Cultures: Architectural Design and Programming*, John Wiley & Sons
- Carpo, M. 2011, *The alphabet and the algorithm*, The MIT Press, Cambridge, Massachusetts
- Catmull, E. & Clark, J., 1978, *Recursively Generated B-spline Surfaces on Arbitrary Topological Meshes*, Computer Aided Design, 10(6), 350-355.
- Costantini, P., 2000, *Curve and surface construction using variable degree polynomial splines*, Computer Aided Geometric Design 17, 419-446, Elsevier Science
- Chan, K.L., Qin K., 2017: Biomass burning related pollution and their contributions to the local air quality in Hong Kong. *Int. Arch. Photogramm. Remote Sens. Spatial Inf. Sci.*, XLII-2/W7.29-36.doi.org/10.5194/isprs-archives-XLII-2-W7-292017.
- D'Uva, D., 2017, *Preface* in D. D'Uva. Handbook of Research. Form and Morphogenesis in Modern Architectural Contexts, IGI Global Hershey, PA, USA
- Mazure, M.L., 2016, *NURBS or not NURBS?*, Comptes Rendus Machine, Volume 354, Issue 7, Pages 747-750, Elsevier
- Piegl, L.A., *On NURBS: A Survey*, Jan 01, IEEE Computer Graphics and Applications, Vol. 11, No. 1, pp. 55 - 71
- Schantz, P., *Distance, Duration, and Velocity in Cycle Commuting: Analyses of Relations and Determinants of Velocity*, International Journal of Environmental Research and Public Health, MDPI, 2017
- Tedeschi, A., 2014, *AAD - Algorithms-Aided Design*, Le Penseur Publisher, Brienza (Potenza), Italia
- Zhong, D., Liu, J., Li, M., Hao, C., *NURBS reconstruction of digital terrain for hydropower engineering based on TIN model*, Progress in Natural Science, Vol. 18, pp. 1409-1415, 2008