



unione italiana disegno

CONNETTERE **CONNECTING** un disegno per annodare e tessere drawing for weaving relationships

42° CONVEGNO INTERNAZIONALE
DEI DOCENTI DELLE DISCIPLINE DELLA RAPPRESENTAZIONE
CONGRESSO DELLA UNIONE ITALIANA PER IL DISEGNO
ATTI 2020
42th INTERNATIONAL CONFERENCE
OF REPRESENTATION DISCIPLINES TEACHERS
CONGRESS OF UNIONE ITALIANA PER IL DISEGNO
PROCEEDINGS 2020

a cura di

Adriana Arena
Marinella Arena
Rosario Giovanni Brandolino
Daniele Colistra
Gaetano Ginex
Domenico Mediatì
Sebastiano Nucifora
Paola Raffa

FrancoAngeli OPEN  ACCESS

diségno

direttore Francesca Fatta

La Collana accoglie i volumi degli atti dei convegni annuali della Società Scientifica UID - Unione Italiana per il Disegno e gli esiti di incontri, ricerche e simposi di carattere internazionale organizzati nell'ambito delle attività promosse o patrocinate dalla UID. I temi riguardano il Settore Scientifico Disciplinare ICAR/17 Disegno con ambiti di ricerca anche interdisciplinari. I volumi degli atti sono redatti a valle di una *call* aperta a tutti e con un forte taglio internazionale.

I testi sono in italiano o nella lingua madre dell'autore (francese, inglese, portoghese, spagnolo, tedesco) con traduzione integrale in lingua inglese. Il Comitato Scientifico internazionale comprende i membri del Comitato Tecnico Scientifico della UID e numerosi altri docenti stranieri esperti nel campo della Rappresentazione.

I volumi della collana possono essere pubblicati sia a stampa che in *open access* e tutti i contributi degli autori sono sottoposti a *double blind peer review* secondo i criteri di valutazione scientifica attualmente normati.

Comitato Scientifico / Scientific Committee

Giuseppe Amoruso *Politecnico di Milano*
Paolo Belardi *Università degli Studi di Perugia*
Stefano Bertocci *Università degli Studi di Firenze*
Mario Centofanti *Università degli Studi dell'Aquila*
Enrico Cicalò *Università degli Studi di Sassari*
Antonio Conte *Università degli Studi della Basilicata*
Mario Docci *Sapienza Università di Roma*
Edoardo Dotto *Università degli Studi di Catania*
Maria Linda Falcidieno *Università degli Studi di Genova*
Francesca Fatta *Università degli Studi Mediterranea di Reggio Calabria*
Fabrizio Gay *Università IUAV di Venezia*
Andrea Giordano *Università degli Studi di Padova*
Elena Ippoliti *Sapienza Università di Roma*
Francesco Maggio *Università degli Studi di Palermo*
Anna Osello *Politecnico di Torino*
Caterina Palestini *Università degli Studi "G. d'Annunzio" di Chieti-Pescara*
Lia Maria Papa *Università degli Studi di Napoli "Federico II"*
Rossella Salerno *Politecnico di Milano*
Alberto Sdegno *Università degli Studi di Udine*
Chiara Vernizzi *Università degli Studi di Parma*
Ornella Zerlenga *Università degli Studi della Campania "Luigi Vanvitelli"*

Componenti di strutture straniere

Caroline Astrid Bruzelius *Duke University - USA*
Pilar Chfás *Universidad de Alcalá - Spagna*
Frank Ching *University of Washington - USA*
Livio De Luca *UMR CNRS/MCC MAP Marseille - Francia*
Roberto Ferraris *Universidad Nacional de Córdoba - Argentina*
Glaucia Augusto Fonseca *Universidade Federal do Rio de Janeiro - Brasile*
Pedro Antonio Janeiro *Universidade de Lisboa - Portogallo*
Jacques Laubscher *Tshwane University of Technology - Sudafrica*
Cornelie Leopold *Technische Universität Kaiserslautern - Germania*
Juan José Fernández Martín *Universidad de Valladolid - Spagna*
Carlos Montes Serrano *Universidad de Valladolid - Spagna*
César Otero *Universidad de Cantabria - Spagna*
Guillermo Peris Fajarnes *Universitat Politècnica de València - Spagna*
José Antonio Franco Taboada *Universidade da Coruña - Spagna*
Michael John Kirk Walsh *Nanyang Technological University - Singapore*

FrancoAngeli

OPEN  ACCESS

Il presente volume è pubblicato in open access, ossia il file dell'intero lavoro è liberamente scaricabile dalla piattaforma FrancoAngeli Open Access (<http://bit.ly/francoangeli-oa>). FrancoAngeli Open Access è la piattaforma per pubblicare articoli e monografie, rispettando gli standard etici e qualitativi e la messa a disposizione dei contenuti ad accesso aperto. Oltre a garantire il deposito nei maggiori archivi e repository internazionali OA, la sua integrazione con tutto il ricco catalogo di riviste e collane FrancoAngeli ne massimizza la visibilità e favorisce la facilità di ricerca per l'utente e la possibilità di impatto per l'autore.

Per saperne di più:

http://www.francoangeli.it/come_pubblicare/pubblicare_19.asp

I lettori che desiderano informarsi sui libri e le riviste da noi pubblicati possono consultare il nostro sito Internet: www.francoangeli.it e iscriversi nella home page al servizio "Informatemi" per ricevere via e-mail le segnalazioni delle novità.

CONNETTERE **CONNECTING** un disegno per annodare e tessere drawing for weaving relationships

42° CONVEGNO INTERNAZIONALE
DEI DOCENTI DELLE DISCIPLINE DELLA RAPPRESENTAZIONE
CONGRESSO DELLA UNIONE ITALIANA PER IL DISEGNO
ATTI 2020
42th INTERNATIONAL CONFERENCE
OF REPRESENTATION DISCIPLINES TEACHERS
CONGRESS OF UNIONE ITALIANA PER IL DISEGNO
PROCEEDINGS 2020

a cura di/edited by

Adriana Arena
Marinella Arena
Rosario Giovanni Brandolino
Daniele Colistra
Gaetano Ginex
Domenico Mediatì
Sebastiano Nucifora
Paola Raffa



Comitato Scientifico / Scientific Committee

Giuseppe Amoruso *Politecnico di Milano*
Fabio Basile *Università di Messina*
Paolo Belardi *Università di Perugia*
Stefano Bertocci *Università di Firenze*
Mario Centofanti *Università dell'Aquila*
Enrico Cicalò *Università di Sassari*
Daniele Colistra *Università Mediterranea di Reggio Calabria*
Antonio Conte *Università della Basilicata*
Mario Doccì *Sapienza Università di Roma*
Edoardo Dotto *Università di Catania*
Maria Linda Falcidieno *Università di Genova*
Francesca Fatta *Università Mediterranea di Reggio Calabria*
Ángela García Codoñer *Universitat Politècnica de València*
Juan Francisco García Nofuentes *Universidad de Granada*
Fabrizio Gay *Università IUAV di Venezia*
Gaetano Ginex *Università Mediterranea di Reggio Calabria*
Andrea Giordano *Università di Padova*
Massimo Giovannini *Università Mediterranea di Reggio Calabria*
Marc Hemmerling *Technology Arts Science Köln*
Elena Ippoliti *Sapienza Università di Roma*
Pedro Antonio Janeiro *Universidade de Lisboa*
Fakher Kharrat *Ecole Nationale d'Architecture de Tunis*
Cornelie Leopold *Technische Universität Kaiserslautern*
Francesco Maggio *Università di Palermo*
Roser Martínez Ramos e Iruela *Universidad de Granada*
Carlos Montes Serrano *Universidad de Valladolid*
Pilar Chías Navarro *Universidad de Alcalá*
Pablo José Navarro Esteve *Universitat Politècnica de València*
Anna Osello *Politecnico di Torino*
Spiros Papadopoulos *University of Thessaly*
Caterina Palestini *Università di Chieti-Pescara*
Lia Maria Papa *Università di Napoli "Federico II"*
Rossella Salerno *Politecnico di Milano*
Alberto Sdegno *Università di Udine*
José Antonio Franco Taboada *Universidad da Coruña*
Chiara Vernizzi *Università di Parma*
Ornella Zerlenga *Università della Campania "Luigi Vanvitelli"*

Coordinamento Scientifico / Scientific Coordination

Gaetano Ginex *Università Mediterranea di Reggio Calabria*
Daniele Colistra *Università Mediterranea di Reggio Calabria*

Coordinamento Editoriale / Editorial Coordination

Paola Raffa *Università Mediterranea di Reggio Calabria*

Comitato Editoriale / Editorial Committee

Alessio Altadonna *Università di Messina*
Adriana Arena *Università di Messina*
Marinella Arena *Università Mediterranea di Reggio Calabria*
Rosario Giovanni Brandolino *Università Mediterranea di Reggio Calabria*
Domenico Mediati *Università Mediterranea di Reggio Calabria*
Antonino Nastasi *Università di Messina*
Sebastian Nuçifora *Università Mediterranea di Reggio Calabria*

I testi e le relative traduzioni oltre che tutte le immagini pubblicate sono stati forniti dai singoli autori per la pubblicazione con copyright e responsabilità scientifica e verso terzi. La revisione e redazione è dei curatori del volume.

Revisori / Peer Reviewers

Fabrizio Agnello *Università di Palermo*
Piero Albinis *Sapienza Università di Roma*
Giuseppe Amoruso *Politecnico di Milano*
Marinella Arena *Università Mediterranea di Reggio Calabria*
Pasquale Argenziano *Università della Campania "Luigi Vanvitelli"*
Barbara Aterini *Università di Firenze*
Fabrizio Avella *Università di Palermo*
Alessandra Avella *Università della Campania "Luigi Vanvitelli"*
Vincenzo Bagnolo *Università di Cagliari*
Marcello Balzani *Università di Firenze*
Laura Baratin *Università di Urbino "Carlo Bo"*
Salvatore Barba *Università di Salerno*
Cristiana Bartolomei *Università di Bologna*
Paolo Belardi *Università di Perugia*
Stefano Bertocci *Università di Firenze*
Marco Giorgio Bevilacqua *Università di Pisa*
Carlo Biagini *Università di Firenze*
Alessandro Bianchi *Politecnico di Milano*
Carlo Bianchini *Sapienza Università di Roma*
Fabio Bianconi *Università di Perugia*
Enrica Bistagnino *Università di Genova*
Antonio Bixio *Università della Basilicata*
Maurizio Marco Bocconcino *Politecnico di Torino*
Cecilia Bolognesi *Politecnico di Milano*
Stefano Brusaporci *Università dell'Aquila*
Massimiliano Campi *Università di Napoli "Federico II"*
Marco Canciani *Università di Roma Tre*
Cristina Cándito *Università di Genova*
Mara Capone *Università di Napoli "Federico II"*
Laura Carlevaris *Sapienza Università di Roma*
Laura Carnevali *Sapienza Università di Roma*
Marco Carpicci *Sapienza Università di Roma*
Andrea Casale *Sapienza Università di Roma*
Mario Centofanti *Università dell'Aquila*
Stefano Chiarenza *Università di Napoli "Federico II"*
Pilar Chías *Universidad de Alcalá*
Emanuela Chiavoni *Sapienza Università di Roma*
Massimiliano Ciammaichella *Università IUAV di Venezia*
Maria Grazia Cianci *Università di Roma Tre*
Enrico Cicalò *Università di Sassari*
Giuseppina Cinque *Università di Roma "Tor Vergata"*
Luigi Cocchiarella *Politecnico di Milano*
Daniele Colistra *Università Mediterranea di Reggio Calabria*
Antonio Conte *Università della Basilicata*
Dino Coppo *Politecnico di Torino*
Carmela Crescenzi *Università di Firenze*
Giuseppe D'Acunto *Università IUAV di Venezia*
Pierpaolo D'Agostino *Università di Napoli "Federico II"*
Roberto de Rubertis *Sapienza Università di Roma*
Antonella di Luggo *Università di Napoli "Federico II"*
Francesco Di Paola *Università di Palermo*
Edoardo Dotto *Università di Catania*
Maria Linda Falcidieno *Università di Genova*
Federico Fallavollita *Università di Bologna*
Marco Fasolo *Sapienza Università di Roma*
Maria Teresa Galizia *Università di Catania*
Noelia Galvan *Universidad de Valladolid*
Juan Francisco García Nofuentes *Universidad de Granada*
Giorgio Garzino *Politecnico di Torino*
Fabrizio Gay *Università IUAV di Venezia*
Paolo Giandebaggi *Università di Parma*
Gaetano Ginex *Università Mediterranea di Reggio Calabria*

Paolo Giordano *Università della Campania "Luigi Vanvitelli"*
Andrea Giordano *Università di Padova*
Massimo Giovannini *Università Mediterranea di Reggio Calabria*
Marc Hemmerling *Technology Arts Science Köln*
Maria Pompeiana Iarossi *Politecnico di Milano*
Manuela Incerti *Università di Ferrara*
Carlo Inglese *Sapienza Università di Roma*
Pedro Antonio Janeiro *Universidade de Lisboa*
Serenio Marco Innocenti *Università di Brescia*
Elena Ippoliti *Sapienza Università di Roma*
Alfonso Ippolito *Sapienza Università di Roma*
Fabio Lanfranchi *Sapienza Università di Roma*
Mariangela Liuzzo *Università di Enna "Kore"*
Massimiliano Lo Turco *Politecnico di Torino*
Alessandro Luigini *Libera Università di Bolzano*
Francesco Maggio *Università di Palermo*
Federica Maietti *Università di Ferrara*
Massimo Malagugini *Università di Genova*
Emma Mandelli *Università di Firenze*
Roser Martínez Ramos e Iruela *Universidad de Granada*
Giovanna A. Massari *Università di Trento*
Giampiero Mele *Università eCampus*
Alessandro Merlo *Università di Firenze*
Barbara Messina *Università di Salerno*
Giuseppe Moglia *Politecnico di Torino*
Cosimo Montealeone *Università di Padova*
Carlos Montes *Universidad de Valladolid*
Marco Muscogiuri *Politecnico di Milano*
Anna Osello *Politecnico di Torino*
Alessandra Pagliano *Università di Napoli "Federico II"*
Caterina Palestini *Università di Chieti-Pescara*
Lia Maria Papa *Università di Napoli "Federico II"*
Leonardo Paris *Sapienza Università di Roma*
Sandro Parrinello *Università di Pavia*
Maria Ines Pascariello *Università di Napoli "Federico II"*
Ivana Passamani *Università di Brescia*
Giulia Pellegri *Università di Genova*
Nicola Pisacane *Università della Campania "Luigi Vanvitelli"*
Manuela Piscitelli *Università della Campania "Luigi Vanvitelli"*
Paolo Piumatti *Politecnico di Torino*
Paola Puma *Università di Firenze*
Fabio Quici *Sapienza Università di Roma*
Luca Ribichini *Sapienza Università di Roma*
Andrea Rolando *Politecnico di Milano*
Adriana Rossi *Università della Campania "Luigi Vanvitelli"*
Daniele Rossi *Università di Camerino*
Michela Rossi *Politecnico di Milano*
Maria Elisabetta Ruggiero *Università di Genova*
Rossella Salerno *Politecnico di Milano*
Antonella Salucci *Università di Chieti-Pescara*
Salvatore Santuccio *Università di Camerino*
Nicolò Sardo *Università di Camerino*
Marcello Scalzo *Università di Firenze*
Alberto Sdegno *Università di Udine*
Giovanna Spadafora *Università di Roma Tre*
Roberta Spallone *Politecnico di Torino*
Maurizio Unali *Università di Chieti-Pescara*
Graziano Mario Valenti *Sapienza Università di Roma*
Chiara Vernizzi *Università di Parma*
Marco Vitali *Politecnico di Torino*
Andrea Zerbi *Università di Parma*
Ornella Zerlenga *Università della Campania "Luigi Vanvitelli"*

13

Francesca Fatta
Prefazione | Preface

25

Gaetano Ginex, Daniele Colistra
CONNETTERE un disegno per annodare e tessere
CONNECTING drawing for weaving relationships

PROMETEO la teoria e la tecnica PROMETHEUS theory and tecniche

31

Carlo Anastasio, Emanuela Paternò, Rita Valenti
Connessioni per una didattica multidisciplinare:
pensiero e espressività della comunicazione
Connections for a Multidisciplinary Teaching Approach:
Thought and Expressiveness of Communication

47

Leonardo Baglioni, Marta Salvatore, Graziano Mario Valenti
Verso una musealizzazione della forma
Towards a Musealization of Shape

67

Marcello Balzani, Fabiana Raco
L'oggetto corporeo. Lo spazio del corpo tra rilievo e rappresentazione
Object towards Human Body. The Space of Human Body
between the Surveying and Representation Processes

87

Stefano Bertocci, Matteo Bigongiari
Le fortificazioni di Piombino di Leonardo da Vinci: la riscoperta
delle tracce dell'impianto rinascimentale attraverso il rilievo digitale e il disegno
The Fortifications of Piombino by Leonardo da Vinci: the Discovery
of the Traces of the Renaissance System through Digital Survey and Drawing

103

Enrica Bistagnino
Connessioni storiche fra il disegno e il design.
Qual è la lezione della Scuola di Ulm?
Historical Connections between Drawing and Design.
What is the Lesson of the Ulm School?

119

Maurizio Marco Bocconcino, Francesca Maria Ugliotti
Interattività e interoperabilità nel disegno a mano libera:
alcuni approcci digitali a supporto della didattica
Interactivity and Interoperability in the Freehand Drawing:
Digital Approaches Supporting Education

139

Cecilia Bolognesi, Fausta Fiorillo
Survey and Modelling for a Theoretical Reconstruction

147

Alessio Bortot
Dai tracciati alle strutture stereotomiche:
analisi di alcuni sistemi voltati della Cattedrale di Murcia (Spagna)
From Trait to Stereotomic Structure:
Analysis of some Vaulted Systems in the Murcia Cathedral (Spain)

167

Belén Butragueño Díaz-Guerra, Mariasun Salgado de la Rosa,
Javier Francisco Raposo Grau
"Draw" Is More

174

Giovanni Caffio
+X+. Un progetto di eco-costruzioni ludiche
per insegnare i principi dell'architettura modulare
+X+. A Project of Playful Eco-Blocks
to Teach the Principles of Modular Architecture

196

Michele Calvano, Massimiliano La Turco, Elisabetta Caterina Giovannini, Andrea Tomalini
Il disegno narrato. Esplicitare algoritmi per insegnare la modellazione digitale
The Narrated Drawing. Explicating Algorithms for Teaching Digital Modelling

216

Alessio Cardaci
Il disegno per l'infanzia: approcci interdisciplinari
per una nuova forma di didattica
The Drawing for Children: Interdisciplinary Approaches
to a New Form of Education

238

Laura Carnevali, Marco Fasolo, Fabio Lanfranchi
Il Disegno e la Scuola Superiore di Architettura
Drawing and the Advanced School of Architecture

260

Marco Carpi, Fabio Colonnese
Laterale vs algoritmico: un nuovo (vecchio) ruolo per il disegno?
Lateral vs Algorithmic: a New (Old) Role for Drawing?

276

Matteo Cavaglia
Imparare dalla rappresentazione digitale del paesaggio,
tra suggestioni 'romantiche' e rigore matematico
Learning from the Digital Representation of the Landscape,
between 'Romantic' Suggestion and Mathematical Rigor

296

Stefano Chiarenza
Arte e geometria nel disegno tessile
Art and Geometry in Textile Drawing

316

Enrico Cicalò
Connessioni tra saperi.
Disciplinarietà, interdisciplinarietà e transdisciplinarietà delle scienze grafiche
Connections between Knowledge.
Disciplinary, Interdisciplinary and Transdisciplinary of Graphic Sciences

338

Luigi Cocchiarella
Connecting by Drawing: Use and Abuse

342

Sara Conte, Michela Rossi, Valentina Marchetti, Giorgio Buratti
Legature, intrecci e merletti. Le strutture tessili
Bindings, Weaves and Lace. The Textile Structures

368

Michela De Domenico
Aldo Indelicato: il M.A.C. siciliano e la connessione tra le arti
Aldo Indelicato: the Sicilian M.A.C. and the Connection between the Arts

390

Daniela De Luca, Umberto Mecca, Giuseppe Moglia, Manuela Rebaudengo
Realtà Aumentata con GIS e BIM a servizio dei processi di scelta complessa
Augmented Reality with GIS and BIM at the Service of Complex Choice Processes

404

Matteo Del Giudice, Emmanuele Iacono
Approccio algoritmico per l'applicazione degli standard grafici
in ambiente BIM
Algorithmic Approach for the Application of Graphic Standards
in the BIM Environment

420

Andrea di Filippo, Barbara Messina
An Approach to Vector Data Extraction from 3D Point Clouds.
The Paleochristian Baptistery of Santa Maria Maggiore

429

Francesco Di Paola, Giovanni Fatta, Calogero Vinci
Il mattone cuneiforme maiolicato. Procedure algoritmico-parametriche
digitali come strumento di indagine e progettazione: dall'architettura
storica all'innovazione del design
The Wedge-Shaped Majolica Brick. Digital Algorithmic-Parametric Procedures
to Investigate and Design: from Historical Architecture to Design Innovation

445

Cristian Farinella
L'esperienza del paesaggio nella natural visualization
Experience of Landscape in Natural Visualization

PROMETEO la teoria e la tecnica
PROMETHEUS theory and technique

Scienza della Rappresentazione, Didattica, Integrazione di Saperi
Sciences of Representation, Didactics, Integration of knowledge

METI la mutazione della forma
METIS the mutation of form

Configurazione, Ideazione, Trasformazione
Configuration, Design, Transformation

MNEMOSINE la costruzione della memoria
MNEMOSYNE the construction of memory

Documentazione, Riproduzione, Virtualità
Documentation, Representation, Virtuality

HERMES il racconto dei luoghi e delle cose
HERMES the story of places and things

Narrazione, Visualità, New Media
Storytelling, Visuality, New Media



Survey and Modelling for a Theoretical Reconstruction

Cecilia Bolognesi
Fausta Fiorillo

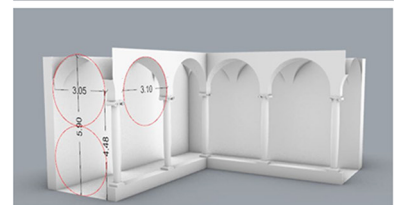
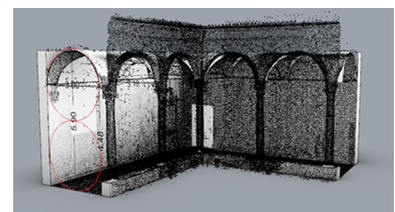
Abstract

The research focuses on the analysis and studies of a UNESCO site for which a major survey is underway by analysing its vaults geometry. The research is based on historical documents, previous reconstruction, actual 3D digital survey. The aim is to identify the ideal best fitting shapes that can represent the real architectural geometry of some of the vaults of the complex, where 3D models derived from laser scanner and/or photogrammetric measurements prove to be a very useful 'instrument' for the geometrical and constructive studies.

At present there are several studies that demonstrate how the productive integration between the classical geometrical constructions and 3D data allows the understanding of the architecture at various levels, for example: identifying common design techniques in a certain era, here in the passage between Romanic and Renaissance Era, developing constructive analysis etc. Current research tries to use this type of data also to develop structural behaviour analysis using the 3D model for the finite element process. Our method contemplates geometric reconstructions using different data sets obliged by necessity: some parts of the complex do not exist anymore, others have been reconstructed on previous grounds, others existing in their original shape have given the possibility to be surveyed now. The result is a first overview as a starting point to be deepened for the better knowledge of our Cultural Heritage, its history and construction across centuries.

Keywords

geometry, survey, vaults, modelling, Renaissance.



The case study

The case study concerns a specific analysis regarding the development and construction of the convent of Santa Maria delle Grazie in Milan, whose first news deals with a building program of a convent complex by the friars of the Dominican order starting in 1460, on a previous military camp with the presence of an ancient chapel dedicated to the Holy Virgin. The program of the construction respected the parameters given by the needs and customs of the order. The building of the church was realized from 1466 to 1490 on a project by Guiniforte Solari, while the convent was almost completed in 1469 at least in its main parts at the ground floor [Mezzanotte, Bascapè 1968]. The church was accompanied by a sacristy built according to the layout of the old Madonna delle Grazie chapel and the convent with a first cloister designed to bury dead, the chapter room, the refectory, the dormitory, the cells of the friars. Around these, the project included other cloisters to organize services. The first stone placed of the convent in 1463 refers to the chapter room covered with vaulted ceilings and aligned with the walls of the old chapel. In 1488, the refectory was completed on the west side. The cells were then added to complete the cloister of the Dead and then the large cloister:

The history of the complex is complicated and several specific treatments has deserved. What matters here is the architectural layout; apparent references to the Lombard Gothic present in the church are accompanied by forms of a sober Milanese Renaissance in some part of the complex. Both of them share the same fate: the huge bombing that in 1943 destroyed a large part of the complex, forcing various efforts for the philological reconstruction of some parts of it.

Two important documents support us in the morphological studies of the convent: some works done by Luca Beltrami at the end of the nineteenth century and the extensive survey measured by Giandomenico Pica in 1937 [Pica, Portaluppi 1937].

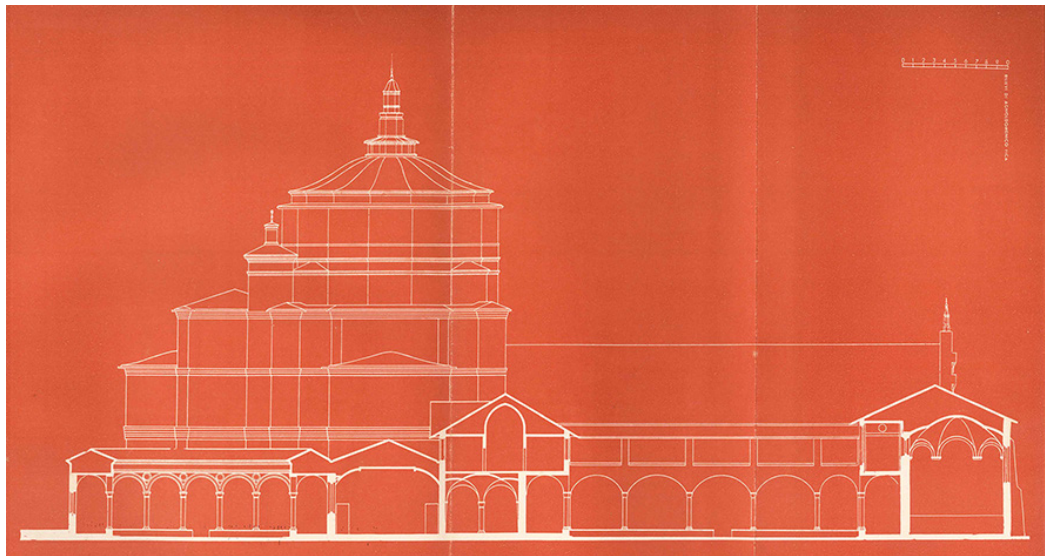


Fig. 1. Est-West section on the Chiostro delle Rane, Chapter Room, library, Chiostro dei Morti, refectory (A. Pica survey).

Related works

After previous works of the authors dealing with the survey of the complex [Bolognesi, Fiorillo 2019], this paper aims to identify the ideal best fitting shape that can represent the architectural geometry of some vaulted parts of it, to understand morphological choices of architecture and construction. 3D models derived from laser scanner and/or photogrammetric measurements prove to be a very useful instrument for the geometrical and

constructive studies of vaults [Iannizzaro et al. 2012] and many previous papers can be considered as positive method indicators of this methodology.

The productive integration between the classical geometrical constructions [Calvo López, Rabasa Díaz 2016] and this 3D data [Corazzi, Bertacchi 2015] allows the understanding of the architecture at various levels, for example: developing constructive analysis [Navarro Camallonga, Rabasa Diaz 2018] or identifying common design techniques [López -Mozo, Senent-Domínguez 2017]. Current research tries to use this type of data also to develop structural behaviour analysis using the 3D model for the finite element process [Tucci et al. 2019]. Other studies refer more precisely to a research for generation of the shape derived from geometric analyses, supported when possible by survey digital tools [Capone et al. 2015]; others constitute a knowledge base to recognize and interpret the geometric structure of the vaults in certain historical times [Spallone 2019].

The reconstruction from historical document: cross vault on a square layout

Due to the architectural history of the convent and its transformations, it was necessary to identify different workflow linked to the modelling of the geometry of the vaulted space. Each of which gives rise to a different study even if in the geometric field: 1) modelling from photographic material without the specific support of direct measurements, but using derived metric observation from historical technical drawings; 2) modelling supported by photographic documents of the previous building and existing surveyed perimeters of them; 3) modelling on a survey from point cloud and reconstruction with an accuracy level equal to the scale 1:5.

The first reconstruction observed concerns the vaulted rooms of the library of the convent that according to the writings of Gattico [Gattico 2004] is dated to 1480. The construction of the Chiostro dei Morti on which the library overlooked has always been affected by the lack of a unitary conception to configure the construction works and expansion over decades from 1464 until 1480 when the building was erected, remarkably detached from the adjacent bodies that contained the dormitory.

The library is located on the upper floor of this and has a clear consonance with the reference models such as the Malatesta Library of Cesena or the archetype of Michelozzo of San Marco in Florence. Although it is not a specific object of the Pica survey of 1938, dedicated primarily the Solariana Church and the Bramante apse, his survey offers us a view of the section of the rooms on the northern side of the cloister which include the three-nave library on the first floor; perhaps originally a single room.

The same survey note the height of the building at 10.20 m in the eaves, almost as if the Pica wanted to underline the actual difference in height between this construction and the others wings of the Chiostro dei Morti on two sides only on the ground floor. In addition to these findings, there are some photographic documents but there is no certainty of constructions on existing perimeters; the modelling carried out starts from the measurements made on the presumed base perimeter and from the photographic survey found in superintendence archives.

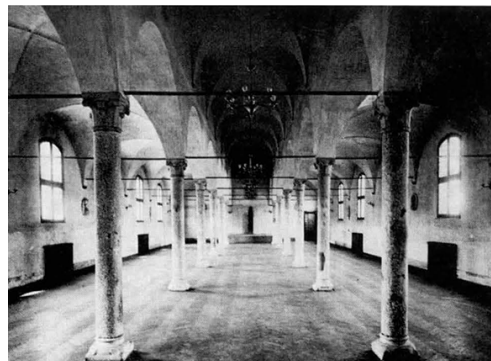


Fig. 2. The three-aisled library destroyed in the bombing of 1943; the back wall coincides with the one of the refectory [Martelli 1980].

The structure hypothesized is a typical Roman cross vault on a square system consisting of the intersection of two bearing barrel vaults where the corners of the diagonal arches are the result of the intersection of the two barrel vaults. The construction of the vaults of the library coincides with the beginning of the period of humanism in Milan, which occurs with the transfer of power between the Visconti and the Sforza in the mid-fifteenth century.

The construction of the church by Solari a few years earlier follows the consolidated northern Gothic tradition of the basilica with three naves, low and wide, separated by stone columns, covered by cross vaults with creases, supported by leaf capitals. However, we are in another era.

Bramante arrived in the capital exactly one year before the construction of the library. The structure of the strictly cylindrical vault places the key of the arches of the barrel vaults on the same level.

The slight dimensional difference between the sides of the base square, which make them rectangular in the survey by Pica for a difference of a few centimetres, means that one of the two arches of the single module of the span is necessarily raised and consequently it creates a light elliptical profile. In common, the two cylinders have a tangent plane, which ensures the flatness of the curves of the ribs to allow the two key lines to remain on the same plane.

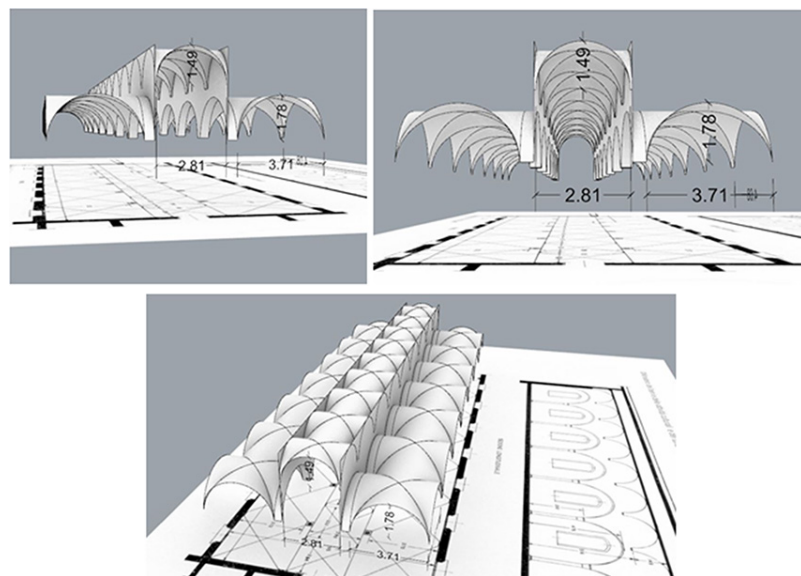


Fig. 3. The three images assume the construction of the roofing of the library space starting from the section survey of Pica and the size of the base walls listed by his work.

The digital survey reconstruction: the vaults of the Chiostro delle Rane

The opportunity to deal with geometrical interpretations and reconstructions based on the survey of an existing building was addressed for the Chiostro delle Rane and the convent part that together with the old sacristy seems to be attributed to Donato Bramante and that was spared from the bombings of 1943.

The starting point of this study was the geometrical modelling of the Chiostro delle Rane, then the cross vaults shape study was deepened and finally, the old sacristy Vault reconstruction was realized. The 3D measurements were conducted using a Terrestrial Laser Scanner (TLS) [Bolghesi, Fiorillo 2019], and the different scans (45 in total) were registered in the same coordinate system using a cloud-to-cloud algorithm in order to obtain a complete 3D points model.

However, these two architectural elements (the Chiostro delle Rane and the old sacristy) were segmented from the referenced point model and decimated with a point-to-point distance of 1 cm, in order to simplify the management of the point cloud in the modelling software.

The direct modelling based on the 3D measurements of the Chiostro delle Rane vaults was addressed in two ways: on the point cloud and on the polygonal model. The 3D results obtained were also compared with each other; and a next step will be the estimation of the deviation between the real measured vault model and its ideal shape.

The geometry of the cloister is formed by five spans of plastered cross vaults for each side, which are resting on corbels embedded in a white plastered wall. The cloister shape is a regular square and measures 24 m on each side. The geometry of the cross vaults is also regular except for some more complex moulding and capital. TLS has been chosen as the best solution to survey, considering the morphology of the architecture, the necessity to capture the geometric feature of the elements and the uniformity of the vaults' textures (white plaster).

The laser scanner survey was performed using a phase-shift measurement system (Leica HDS700). The scanning resolution was set at 6 mm at a distance of 10 m, satisfying a graphic 3D representation according to 1:50 scale (plotting error of 10 mm).

The theoretical modelling starts with the geometrical segmentation of the cloud of the cloister; which was decimated with a point-to-point distance of 1 cm. The vaults drawn in the Chiostro delle Rane are another example of vaults a cruise perfectly consistent with the vaulted system of the library set on a nearly square base of approximately 3.00x 3.10 m (fig. 4).

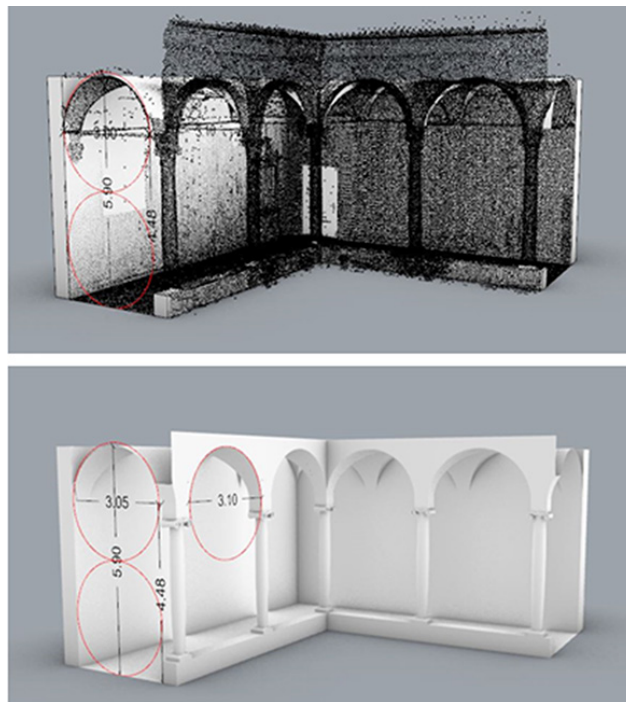


Fig. 4. Theoretical model of the vaults a cruise of the Chiostro delle Rane.

A second option for the passage from the point cloud to the geometrical model deals with the possibility to realize a polygonal model. After considering several software for creating the mesh, the choice was oriented towards Cloud Compare, open-source software for processing point clouds and meshes (which is particularly effective in terms of the possibility of getting meshes with a high level of detail and relatively short processing times).

The workflow for creating the mesh follows several steps:

- the scans of the cloister was imported into Autodesk Recap Pro software, cleaned up and divided into 4 chunks (each corresponding to a quarter of cloister and roughly characterised by 45 million of points) to facilitate subsequent processing;

- the point cloud's chunks were exported (in .pts format) and then imported separately in Cloud Compare, where it was possible to recalculate normal (information lost during the conversion in .pts). This phase proved to be the most expensive in terms of time, considering that to obtain the information on the normal vectors it was necessary to process each chunk for about 5/6 h;
- once the normal directions have been computed, the "Poisson surface reconstruction" plugin has been used to obtain meshes with a high level of detail, each of which consists of an average of 10 million faces;
- the obtained meshes (exported in.obj) have been optimised in Autodesk Recap Photo (identifying and deleting of all the noised groups of triangles);
- the chunk was then imported into Rhinoceros for visualising and reverse modelling the geometries (each mesh maintained the initial absolute reference system so that no alignment was necessary). The meshes were used to perform reverse modelling of the architectural element to obtain NURBS with high accuracy. The "multiple sections" command was used to obtain curves coinciding with the generating curves of the analysed surfaces. The sections were generated with a pitch of 3 cm to obtain an element that highlights the imperfections and irregularities of the real surfaces. The NURBS was finally obtained by combining the various sections with the loft command, which made it possible to obtain the cross vaults of the cloister and consider it not only in its geometric conformation but in its physical state of deformation that has occurred over the centuries;
- as a further examination of the degree of accuracy of the geometrical model, it has been transformed into a mesh and it has been imported into Autodesk Netfabb to compare the initial polygonal model with the final one. The result of the comparison was a heat-map, which showed that the maximum error obtained from the meshes' overlapping is never more than 0.03 mm, allowing us to obtain an exact morphology of the actual state of the vault.

The geometrical reconstruction and differences from the digital survey: the vault of the old sacristy

The last case analysed concerns the vault of the old sacristy of Bramante: once set on a three-circle arch with lunette and equipped with an umbrella closure in the final parts. The Sacristy, together with the cloister, represents one of the Bramantesque elements that were not involved in the bombings of 1943.

Unlike the vaults of the cloister, it is enriched by a rich decorative structure consistent with its general morphology: large areas that represent a starry sky, with stars decorated in relief, stretched between the vaults where the diagonal arches decorated in gold underline the changes in inclination.

The survey of the whole sacristy was performed using the P30 and acquiring 11 scans: 8 (4 close to the left side and 4 close to the right side), taken at a height of about 170 cm from the floor; 1 near the apse, also taken at 170 cm in height, and 2 in the centre of the nave, at a height of about 250 cm from the floor (this height was necessary to reduce the shaded areas and to acquire a more consistent part of the vault and of the wooden furniture surrounding the walls).

The first 9 scans were acquired with a resolution of 3.1 mm at 10 m, the other two with a resolution of 1.6 mm at 10 m. The photos were captured in full-dome mode in HDR with a resolution of 1920 × 1920 pixels for a single frame. In order to allow a more reliable chromatic reconstruction, together with the laser scans, a photographic dataset of all the decorated surfaces (the vault, the apse, the wardrobes) was collected. The laser scanner data were then processed within Cyclone, which aligned the individual point clouds with the cloud-to-cloud method (target-less approaches).

As already specified for the cloister, the sacristy point model was segmented from the whole model and decimated with a point-to-point distance of 1 cm. The first section of this decimated vault was obtained in order to understand the real geometry of the main

arch. For the main curvature of the vault, the theoretical model identifies a major arch derived from the construction of a 3-circle arch, visible to the naked eye especially near the sides of the arch.

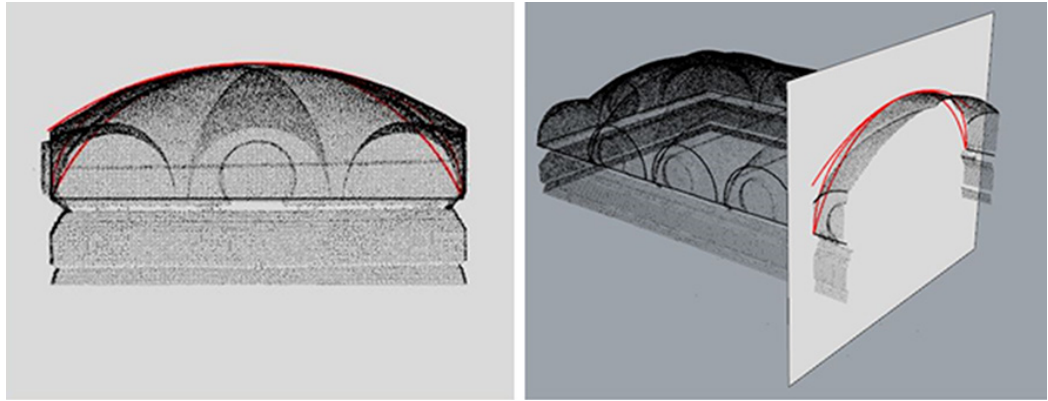


Fig. 5. Theoretical model of the vaults of the old sacristy.

However, when this construction, that seems the most suitable, is compared with the real point cloud specifically in the intersections with the lunettes and related springer, easily traceable on the point cloud model, (in construction from the lunettes) it gives rise to a visible deviation in the modelling of about 10 cm. The same procedure was adopted modifying the rays of the two lateral circles as well as by trying a construction with a single arc of a circle, which in this case finds a pro-directional relationship with the environment of the sacristy. However, even in this case the modelling did not find precise confirmation in the survey carried out; the gap between the two curves is easily identifiable in figure 6 on the left (a), the overlapping of them on the right (b).

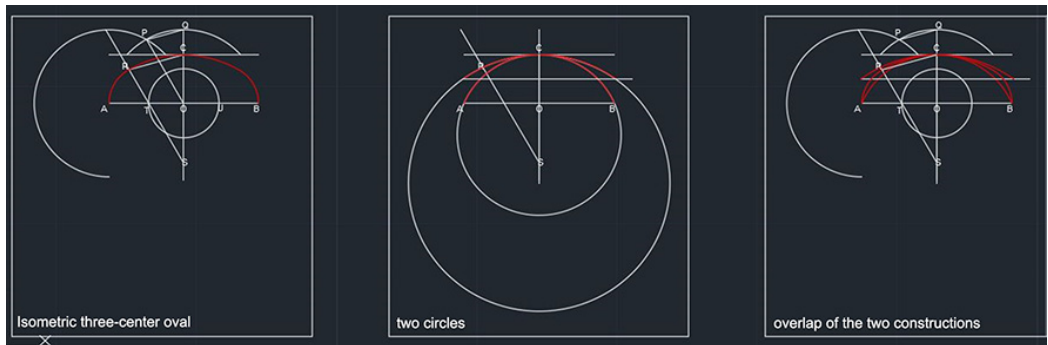


Fig. 6. Geometrical model of the vaults of the old sacristy. On the left the main curve, derived from a 3-circle arch, in the middle one single circle (the lowest) for the main vault and a wider for the lunette, the third showing the differences among the first and the second method of tracing.

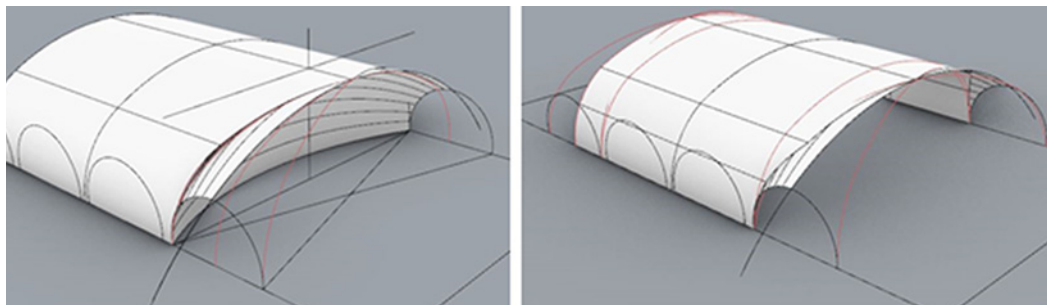


Fig. 7. Theoretical model of the vaults of the old sacristy. On the left the main curve, derived from a 3-circle arch and lunette, on the right one single circle for the main vault and a wider for the lunette.

Conclusion

This monument offers an overview of the whole production cycle of vaulted systems built in a certain amount of years in the same place; it goes back from construction to design and ideation through a geometrical analysis. Graphical analyses and reconstructive digital models allowed highlighting the role of geometry in the Milanese Renaissance and the logic of shapes' composition at the basis of them. In this paper, we considered different survey data and simple geometrical rules.

The research now will be implemented with more 3D specific geometric modelling (direct and parametric [Tommasi et al. 2016]) to understand if we can consider Renaissance geometry rules verified from construction on site.

References

- AA.VV. (1983). *Santa Maria delle Grazie*. Cinisello Balsamo: Amilcare Pizzi Arti Grafiche. Banca Popolare Di Milano.
- Bolognesi Cecilia, Fiorillo Fausta (2019). Analysis of Historical Documentation Accuracy Aimed to Semantically-Enriched 3D Representations. In Belardi Paolo (ed.). *Reflections: the art of drawing/the drawing of art*. Proceedings of the 41th International Conference of Teachers of the disciplines of the Representation. Perugia, 19-21 september 2019, pp. 402-408. Roma: Gangemi Editore.
- Calvo López José, Rabasa Díaz Enrique (2016). Construcción, dibujo y geometría en la transición entre Gótico y Renacimiento. In *Artígrama*, 31, pp. 67-86.
- Capone Mara, Campi Massimiliano, Catuogno Raffaele (2015). Gothic churches in Paris St Gervais et st Protais. In *Int. Arch. Photogramm. Remote Sens. Spatial Inf. Sci.*, XL-5/W4, 2015, pp. 423-430 <<https://doi.org/10.5194/isprsarchives-XL-5-W4-423>>.
- Corazzi Roberto, Bertacchi Silvia (2015). Documentazione dell'intradosso della Cupola di Santa Maria del Fiore a Firenze tramite rilevamento fotogrammetrico Structure from Motion (SfM). In *DisegnareCon*, 8/14, pp. 1-12.
- Gattico Girolamo (2004). *Descrizione succinta e vera delle cose spettanti alla chiesa e convento di Santa Maria delle Grazie e di Santa Maria della Rosa e suo luogo, et altre loro aderenze in Milano dell'Ordine de'predicatori con due tavole in fine*. Milano: Ente raccolta Vinciana.
- Iannizzaro Vincenzo et al. (2012). The domes of the Amalfi Coast: survey and digital representation of complex shapes. In: *Domes in the world. International Congress Proceedings*. Firenze: Nardini Editore, 2012, pp. 1-12.
- López-Mozo Ana, Senent-Domínguez Rosa (2017). Late Gothic Asymmetrical Diamond Vaults in Spain. In *Nexus Network Journal*, 19, pp. 323-343.
- Martelli Gisberto (1980). Il riflettore di Santa Maria delle Grazie in Milano e il restauro di Luca Beltrami nell'ultimo decennio dell'Ottocento. In *Bollettino d'Arte Roma*, 1980, 65.8, pp. 55-72.
- Mezzanotte Paolo, Bascapè Giacomo C. (1968). *Milano nell'arte e nella storia*. Milano: Carlo Bestetti.
- Navarro Camallonga Pablo, Rabasa Diaz Enrique (2018). *Vaulted Ceilings Built Like Arches*. In *The Architectural Works of Baldomar Ega-Revista De Expresion Grafica Arquitectonica*, 32, pp. 142-153.
- Pica Agnoldomenico, Portaluppi Piero (1938). *Le Grazie*. Roma: Casa Editrice Mediterranea.
- Spallone Roberta (2019). Geometry of vaulted systems in the treatises by Guarino Guarini. In *EGE Revista de Expresión Gráfica en la Edificación*, [S.l.], n. 11, pp. 79-93.
- Tommasi Cinzia, Achille Cristiana, Fassi Francesco (2016). From point cloud to BIM: a modelling challenge in the cultural heritage field. In *Int. Arch. Photogramm. Remote Sens. Spatial Inf. Sci.*, XLI-B5, 2016, pp. 429-436.
- Tucci Grazia, et al. (2019). Ground Based 3D Modelling (Photogrammetry and TLS) - Survey, Documentation and Structural Assessment of XX Century Cultural Heritage In India - A Case Study of the Masonry Vaults in Dehradun. In *Int. Arch. Photogramm. Remote Sens. Spatial Inf. Sci.*, XLII-2/W11, pp. 1105-1111.

Authors

Cecilia Bolognesi, Politecnico di Milano, cecilia.bolognesi@polimi.it
Fausta Fiorillo, Politecnico di Milano, fausta.fiorillo@polimi.it

To cite this chapter: Bolognesi Cecilia, Fiorillo Fausta (2020). Survey and modelling for a theoretical reconstruction. In Arena A., Arena M., Brandolino R.G., Colistra D., Ginex G., Mediatì D., Nucifora S., Raffa P. (a cura di). *Connettere. Un disegno per annodare e tessere. Atti del 42° Convegno Internazionale dei Docenti delle Discipline della Rappresentazione/Connecting. Drawing for weaving relationships. Proceedings of the 42th International Conference of Representation Disciplines Teachers*. Milano: FrancoAngeli, pp. 139-146.