

Supplementary information

**Degradation of Emerging Organic Pollutants in Wastewater Effluents by Electrochemical
Photocatalysis on Nanostructured TiO₂ Meshes**

S. Murgolo¹, S. Franz², H. Arab², M. Bestetti², E. Falletta³, G. Mascolo^{1*}

(1) CNR, Istituto di Ricerca Sulle Acque, Via F. De Blasio 5, 70132 Bari, Italy

(2) Politecnico di Milano, Department of Chemistry, Materials and Chemical Engineering, „G.Natta“,
Milano, Italy

(3) Università di Milano, Dipartimento di Chimica, Milano (Italy)

* Corresponding author. Tel.: +39 080 5820519; fax: +39 080 5313365.

E-mail address: giuseppe.mascolo@ba.irsas.cnr.it (G. Mascolo).

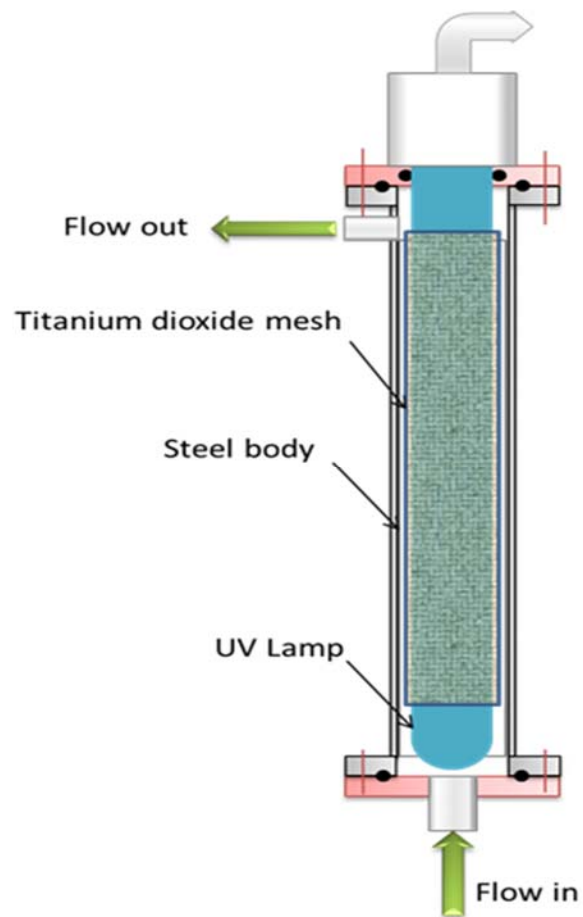


Figure S1. Sketch of the reactor for electrochemical photocatalysis.

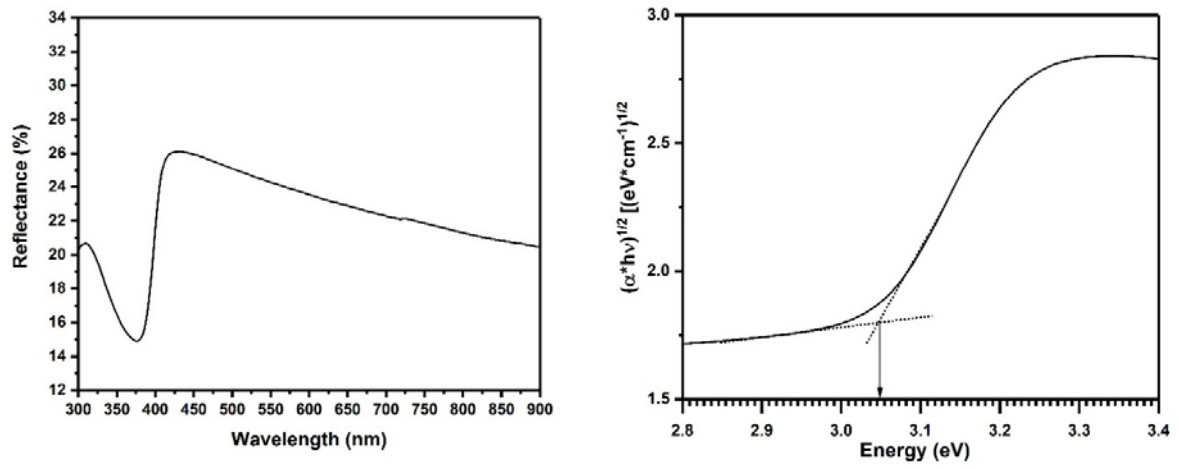


Figure S2. UV-VIS spectra of PEO TiO₂ films (left pane) and Tauc plot graph (right pane).

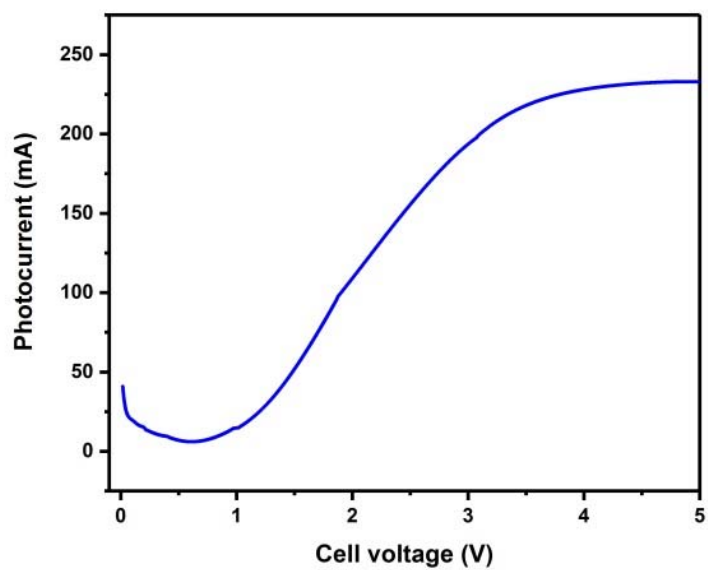


Figure S3. Photocurrent of the TiO₂ catalyst supported into the expanded mesh, measurement carried out in the electrochemical photoreactor.

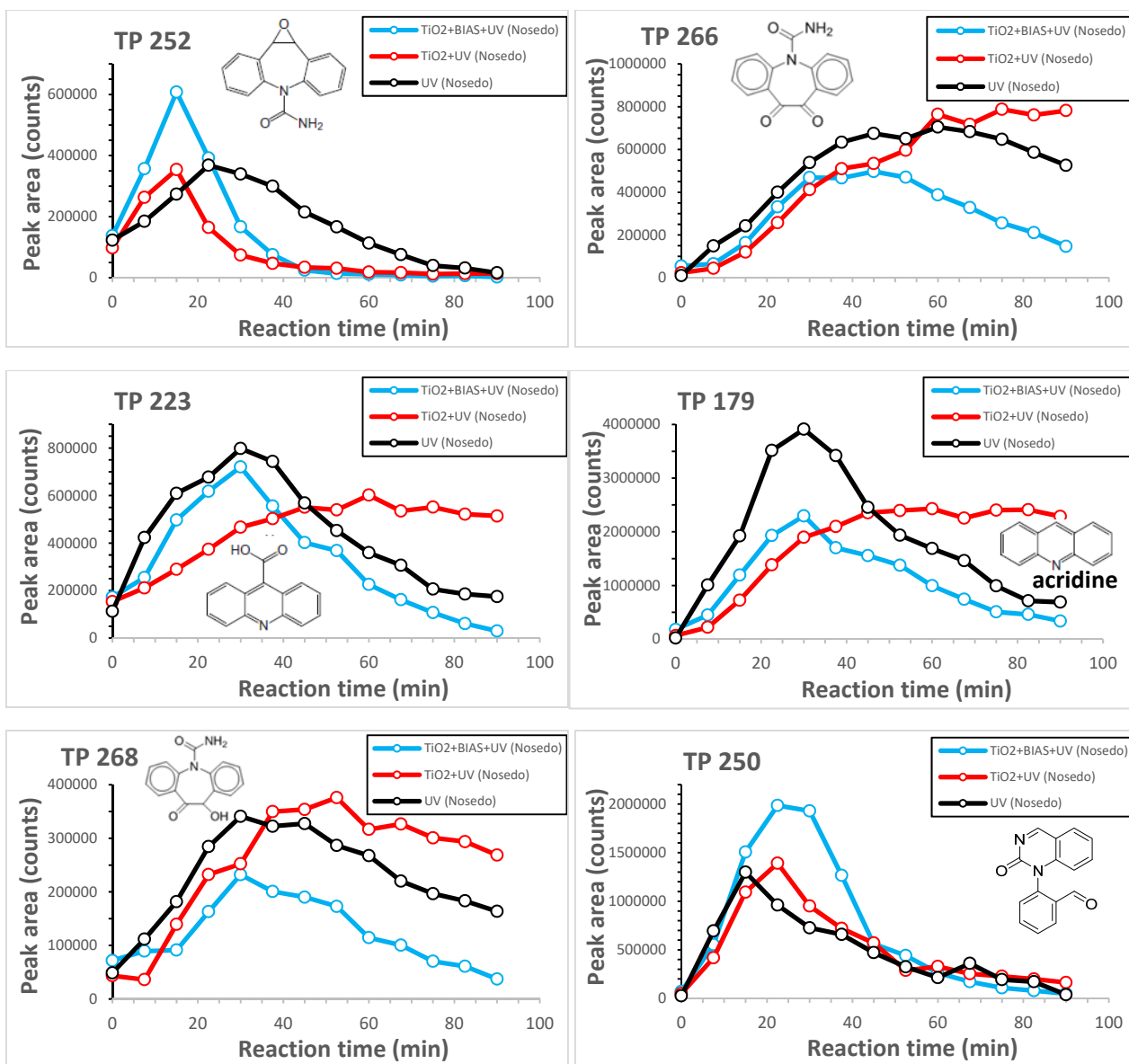


Figure S4. Time-profiles of transformation products deriving from carbamazepine and detected by the linkage analysis. The transformation products were used for making the carbamazepine degradation pathway depicted in Figure 6.

Table S1. Compounds detected during the analytical screening of the secondary wastewater effluent. The CECs identified on the basis of both accurate mass of isotopic cluster and matching the high resolution product ion mass spectra are also reported.

Comp. number	Ret. time (min)	measured [M+H] ⁺ mass (Da)	Proposed compound	Elemental composition	Mass error (ppm)
1	3.95	246.9063		C2H3IN2O2S	13.9
2	4.1	214.9165		C3H3IO3	-15.2
3	4.11	255.9433		C5H6INO3	-12.6
4	4.13	198.9389		C2H3IN2O	13.6
5	4.15	348.8634		C5H6I2N2	-8.7
6	4.17	316.8797		C6H6IO3PS	29.6
7	4.35	252.0437		C10H9N3O3S	12.5
8	4.62	228.8544		C3H2Br2O2	24
9	4.77	182.9344		C4HCl3N2	37.7
10	4.79	130.108	Metformin	C4H11N5	4.7
11	4.92	176.1268	Debrisoquine	C10H13N3	47
12	5.16	126.1266	gamma-Coniceine	C8H15N	9.8
13	5.41	110.059		C6H7NO	6
14	5.48	236.1493		C10H21NO5	0.6
15	5.53	156.1373		C9H17NO	5.7
16	5.65	140.078	Phosphorimidic trihydrazide	H10N7P	17
17	5.76	194.103		C8H11N5O	3.7
18	6.14	254.1247	Penciclovir	C10H15N5O3	-0.3
19	6.33	247.1156	Fonofos	C8H10N10	-4.3
20	6.78	124.075		C7H9NO	-6.4
21	6.86	293.117		C19H16O3	-0.1
22	6.9	249.1251		C11H21O4P	1.5
23	6.94	254.1393		C13H19NO4	2.4
24	7.03	178.1325	Bethanidine	C10H15N3	5.2
25	7.03	222.1483	tert-butyl-N-methoxy-N-methylbenzamide	C13H19NO2	2.8
26	7.06	268.1548	Metoprolol acid	C14H21NO4	0.8
27	7.06	269.1564		C18H21O2	3.5
28	7.12	258.1131		C15H15NO3	1.3
29	7.15	267.1074		C10H18O8	2.1
30	7.15	234.1303	Normeperidine	C10H19NO5	4.1
31	7.21	308.1873		C18H21N5	5.3
32	7.24	246.1231		C13H15N3O2	-0.8
33	7.26	232.1045		C17H13N	-18.4
34	7.29	362.1534	Levofloxacin	C18H20FN3O4	4.8

Comp. number	Ret. time (min)	measured [M+H] ⁺ mass (Da)	Proposed compound	Elemental composition	Mass error (ppm)
35	7.29	250.1788		C15H23NO2	-0.2
36	7.33	248.1734		C14H21N3O	-1.4
37	7.33	236.1642		C14H21NO2	0.8
38	7.35	144.1735		C9H21N	-9.5
39	7.38	235.0988		C13H14O4	1.8
40	7.42	291.1406	Trimethoprim	C14H18N4O3	-11.9
41	7.51	164.0694		C9H9NO2	-9.8
42	7.54	243.0833		C11H14O6	-9.9
43	7.54	188.1067		C12H13NO	-4.7
44	7.63	250.1793		C15H23NO2	0.2
45	7.67	360.1061		C17H17N3O4S	4.6
46	7.67	259.1502		C9H18N6O3	-1.6
47	7.7	120.0549	Benzotriazole	C6H5N3	-6
48	7.76	264.1951	O-Desmethylvenlafaxine	C16H25NO2	-0.8
49	7.76	307.138		C14H18N4O4	1.7
50	7.76	273.1304		C20H16O	0.4
51	7.76	251.1478		C11H22O6	3.1
52	7.77	303.1773		C11H22N6O4	0.2
53	7.84	244.1687		C16H21NO	2.9
54	7.88	283.1181		C14H18O6	1.4
55	7.91	258.1857	Dextrophan	C17H23NO	1.4
56	7.95	235.1791	Lidocaine	C14H22N2O	-1.7
57	7.95	307.1156	Fluconazole	C13H12F2N6O	0.8
58	7.95	333.1446		C17H20N2O5	-5.1
59	8.02	301.1278		C15H24O2S2	6.5
60	8.02	271.1102	10,11-dihydroxycarbamazepine	C15H14N2O3	-1.9
61	8.05	256.0156	Lamotrigine	C9H7Cl2N5	-0.5
62	8.07	150.0649		C7H7N3O	-7.9
63	8.09	212.1184	1,3-Diphenylguanidine	C13H13N3	-3.9
64	8.14	287.1272		C13H14N6O2	2.4
65	8.14	182.1276		C9H15N3O	7.2
66	8.16	301.1268		C18H20O2S	1.4
67	8.21	366.0697		C18H11N3O6	-2.9
68	8.21	331.0957		C17H10N6O2	0
69	8.23	273.1673		C10H20N6O3	0.5
70	8.23	268.191	Metoprolol	C15H25NO3	1.7
71	8.25	287.1466		C10H18N6O4	1.6
72	8.26	192.1009		C11H13NO2	-3.2
73	8.3	264.1944	o-Desmethylvenlafaxine	C16H25NO2	0.7
74	8.3	392.0879		C10H17N9O4S2	1.6

Comp. number	Ret. time (min)	measured [M+H] ⁺ mass (Da)	Proposed compound	Elemental composition	Mass error (ppm)
75	8.33	222.1844	Tapentadol	C14H23NO	2.9
76	8.38	317.1935		C13H20N10	-1.6
77	8.42	375.2623		C39H68N6O8 ¹	-0.3
78	8.47	261.1589		C15H20N2O2	-0.2
79	8.49	195.148		C11H18N2O	-6.6
80	8.52	331.173		C16H26O7	-4
81	8.54	228.1012		C8H18ClNO4	1.3
82	8.56	134.07		C7H7N3	-6.5
83	8.56	217.1059		C10H16O5	-3
84	8.58	247.1491		C14H18N2O2	0.2
85	8.63	267.1226		C15H14N4O	4
86	8.68	378.1118		C15H24NO6PS	-0.2
87	8.7	225.1216		C11H16N2O3	-3
88	8.72	149.0439		C6H4N4O	-14
89	8.77	254.0586	Sulfamethoxazole	C10H11N3O3S	-3.5
90	8.82	274.2019		C14H27NO4	0.5
91	8.93	185.1138		C6H12N6O	-3.4
92	8.96	389.1801		C18H28O9	-2.3
93	9.01	185.1141		C6H12N6O	-3.4
94	9.07	202.1794		C11H23NO2	5.3
95	9.08	331.2096		C14H22N10	-0.8
96	9.08	393.1811		C12H24N8O7	-6.3
97	9.12	280.0566	Sibutramine	C17H10ClNO	12.3
98	9.21	354.0724		C10H11N9O4S	0.1
99	9.21	216.0162	Cycloate	C8H9NO2S2	3.3
100	9.22	267.0872		C14H10N4O2	-0.9
101	9.24	278.2116	Venlafaxine	C17H27NO2	0.1
102	9.28	255.1124	10,11-Dihydro-10-hydroxycarbamazepine	C15H14N2O2	1.2
103	9.33	154.1217		C9H15NO	-7.4
104	9.36	247.1441		C14H18N2O2	0.3
105	9.38	326.2341	Bisoprolol	C18H31NO4	3.7
106	9.42	373.1605		C13H16N12O2	3
107	9.47	389.2152	Trimethobenzamide	C21H28N2O5	24.4
108	9.47	291.2063		C17H26N2O2	-1.4
109	9.56	253.0944	Carbamazepine_epoxide	C15H12N2O2	1.4
110	9.59	142.1218	1-piperidino-acetone	C8H15NO	-8
111	9.63	387.1961		C26H26O3	2.1
112	9.66	359.1681		C17H26O8	-4.3
113	9.77	398.1564		C11H24N7O7P	1.6
114	9.82	358.2022	Bendamustine	C21H27NO4	5.1

Comp. number	Ret. time (min)	measured [M+H] ⁺ mass (Da)	Proposed compound	Elemental composition	Mass error (ppm)
115	10.03	389.2528		C17H28N10O	1.2
116	10.06	367.2693		C19H34N4O3	2.3
117	10.22	311.1583	Desmethylocitalopram	C19H19FN2O	2.8
118	10.25	262.146		C15H19NO3	0.1
119	10.4	325.1715	Citalopram	C12H20N8O3	-4.7
120	10.47	244.5684		C10H21N11O10S ¹	1
121	10.49	337.0279		C9H4N8O7	1
122	10.51	237.044	Carbamazepine	C15H12N2O	-2.3
123	10.51	194.0952	5H-Dibenz(c,e)azepine	C14H11N	5.5
124	10.51	158.5398		C16H14NO4P ¹	0.6
125	10.51	374.1256		C40H38N6O5S ²	-0.1
126	10.51	321.0548	Lorazepam	C22H8O3	1.5
127	10.51	192.0803		C14H9N	-5.6
128	10.51	382.1105		C21H19NO4S	0.5
129	10.53	305.0773		C16H17O2PS	6.7
130	10.54	166.5566		C8H18IN3O3 ¹	-1.9
131	10.7	295.1208		C15H19CIN2O2	0.1
132	10.87	359.2033		C19H26N4O3	-8.3
133	10.94	299.113		C8H19N4O6P	-4
134	11.03	325.2282		C21H28N2O	1.9
135	11.07	247.1691		C16H22O2	0.6
136	11.2	295.1208		C15H19CIN2O2	0.1
137	11.22	231.1481		C14H18N2O	3.9
138	11.29	278.1912	EDDP	C20H23N	2.4
139	11.5	342.2074	Propafenone	C21H27NO3	2.6
140	11.71	211.0753		C14H10O2	-5
141	11.72	305.1765		C19H20N4	2.1
142	11.72	293.1063	Climbazol	C15H17CIN2O2	2.6
143	11.72	258.1251		C14H15N3O2	5.8
144	11.86	205.0162		C7H8O5S	1.9
145	11.95	192.1372	Deet	C12H17NO	5
146	11.98	296.1275		C18H17NO3	0.6
147	12.12	303.1596		C18H22O4	4
148	12.17	279.0921		C20H10N2	3.3
149	12.21	310.2165	Methadone	C21H27NO	2.8
150	12.28	343.1887		C13H30N2O6S	-1.3
151	12.43	223.0629		C8H14O5S	-2.6
152	12.5	353.2015		C42H56O9 ¹	-2.5
153	12.53	249.1845		C16H24O2	-0.8
154	13.31	219.1738		C15H22O	-2.9

Comp. number	Ret. time (min)	measured [M+H] ⁺ mass (Da)	Proposed compound	Elemental composition	Mass error (ppm)
155	13.34	249.1842		C16H24O2	-1.2
156	13.44	222.1846		C14H23NO	-2.9
157	13.49	327.009		C11H11BrN4O3	0.5
158	13.49	348.9898		C7H12Cl3N6O2P	-0.5
159	13.49	293.0705		C13H13N2O4P	4.9
160	13.56	249.1844		C16H24O2	-1.2
161	13.58	212.2002		C13H25NO	-5.1
162	13.63	314.1403		C18H19NO4	0.7
163	13.73	249.1849		C16H24O2	-0.8
164	13.75	271.1668		C13H22N2O4	8.4
165	13.75	195.1365		C12H18O2	7.1
166	13.77	252.1021		C16H13NO2	0
167	14.06	135.1158	Diglyme	C5H14N2O2	22.9
168	14.13	265.1554		C14H20N2O3	1.7
169	14.2	209.1891		C14H24O	-4.7
170	14.2	283.0691	2-(2,4-Dioxo-3,4-dihydroquinazolin-1(2H)-yl)benzoic acid	C15H10N2O4	-8.9
171	14.2	296.0244	Diclofenac	C14H11Cl2NO2	0.8
172	14.2	153.1263		C10H16O	7.4
173	14.28	251.1638		C12H26O3S	-14.1
174	14.34	273.1844	Rubrofusarin	C18H24O2	1.7
175	14.39	275.2002		C18H26O2	0.5
176	14.42	219.1726		C15H22O	-4.3
177	14.44	249.184	Bunitrolol	C16H24O2	-1.6
178	14.59	253.2158		C16H28O2	1
179	14.73	233.1901		C16H24O	1.1
180	15.09	107.0485		C7H6O	-2.3
181	15.96	267.1714	Zinniol	C15H22O4	46
182	16.01	251.2007		C16H26O2	1.4
183	16.08	267.1712		C14H22N2O3	4
184	16.17	204.1371		C13H17NO	5.4
185	16.39	378.3227		C21H39N5O	0.6
186	16.48	257.1899		C18H24O	0.6
187	16.58	191.1789		C9H22N2O2	18.8
188	16.72	191.1786		C9H22N2O2	17.8
189	16.85	399.2516		C25H34O4	-1
190	17.21	383.2056		C14H31N4O6P	0.5
191	17.26	273.1851		C18H24O2	0.7
192	17.61	243.2087		C13H26N2O2	14
193	18.96	275.2584		C16H34O3	0.5

Comp. number	Ret. time (min)	measured [M+H] ⁺ mass (Da)	Proposed compound	Elemental composition	Mass error (ppm)
194	19.31	235.2047	Rizatriptan	C16H26O	3.4
195	19.94	359.2236		C22H30O4	2.3
196	20.02	270.2786		C17H35NO	-1.6
197	20.37	371.1022		C14H18N4O6S	0.9
198	20.9	384.3481		C23H45NO3	2.3
199	21.1	395.2215		C20H31ClN4O2	1.7
200	21.5	371.102		C14H18N4O6S	1.1
201	22.12	391.2855	Dioctyl phthalate	C24H38O4	2.8

¹: the detected ion is double charged, therefore the measured mass refers to [M+2H]⁺⁺.

Table S2. List of transformation products detected by non-target organics screening during treatment with electrochemical photocatalysis (TiO₂+Bias+UV), supported photocatalysis (TiO₂+UV) and photolysis with secondary wastewater effluent. The kind of time-profile of each transformation products is also reported.

Transformation product number	Ret. time (min)	Measured <i>m/z</i> , [M+H] ⁺	TiO ₂ +Bias+UV	TiO ₂ +UV	UV
1	4.39	327.0379	bell-like shape	bell-like shape	bell-like shape
2	4.4	123.9538	bell-like shape	bell-like shape	bell-like shape
3	4.42	226.9515	steady	increasing	increasing
4	4.46	282.9056	steady	increasing	increasing
5	4.46	356.9098	steady	increasing	increasing
6	4.47	340.9321	Increasing	increasing	increasing
7	4.47	362.928	steady	increasing	increasing
8	4.51	156.0401	steady	increasing	increasing
9	4.51	167.5482	decay	increasing	increasing
10	4.51	214.917	steady	increasing	increasing
11	4.53	113.1069	decay	bell-like shape	bell-like shape
12	4.53	147.5362	steady	increasing	increasing
13	4.53	232.9274	steady	increasing	increasing
14	4.54	230.8895	steady	increasing	increasing
15	4.55	370.8399	steady	increasing	increasing
16	4.56	268.0989	steady	steady	increasing
17	4.56	330.8973	steady	increasing	increasing
18	4.57	113.0709	bell-like shape	increasing	increasing
19	4.57	346.8773	steady	increasing	increasing
20	4.58	156.0392	steady	increasing	increasing
21	4.58	216.9157	steady	increasing	increasing
22	4.58	362.8858	steady	increasing	increasing
23	4.58	363.0356	bell-like shape	bell-like shape	bell-like shape
24	4.59	71.9526	decay	increasing	increasing
25	4.59	113.0703	bell-like shape	increasing	increasing
26	4.6	132.9018	steady	increasing	increasing
27	4.61	182.9012	decay	increasing	steady
28	4.62	112.0609	increasing	increasing	increasing
29	4.63	230.8895	steady	increasing	increasing
30	4.64	214.917	steady	increasing	increasing
31	4.67	116.0805	increasing	increasing	increasing
32	4.69	187.0017	increasing	increasing	increasing
33	4.81	134.1165	bell-like shape	bell-like shape	bell-like shape
34	4.9	140.1066	bell-like shape	bell-like shape	bell-like shape

Transformation product number	Ret. time (min)	Measured m/z , [M+H] ⁺	TiO ₂ +Bias+UV	TiO ₂ +UV	UV
35	4.91	134.117	bell-like shape	bell-like shape	bell-like shape
36	4.91	158.1172	bell-like shape	bell-like shape	bell-like shape
37	4.91	174.0793	increasing	increasing	increasing
38	4.92	102.0548	increasing	increasing	increasing
39	4.92	130.096	bell-like shape	increasing	increasing
40	4.92	147.0757	steady	steady	bell-like shape
41	4.93	142.0941	bell-like shape	bell-like shape	bell-like shape
42	4.93	143.0548	increasing	increasing	increasing
43	4.93	99.091 4	bell-like shape	increasing	increasing
44	4.94	100.0866	increasing	increasing	increasing
45	4.94	129.0647	steady	steady	increasing
46	4.94	141.0757	increasing	increasing	increasing
47	4.94	160.1065	bell-like shape	increasing	increasing
48	4.94	178.1082	steady	increasing	bell-like shape
49	4.95	126.0766	increasing	increasing	increasing
50	4.98	116.0698	increasing	increasing	increasing
51	5.06	264.1774	bell-like shape	increasing	increasing
52	5.09	192.1129	decay	decay	increasing
53	5.18	198.1597	steady	steady	increasing
54	5.21	86.0599	increasing	increasing	increasing
55	5.21	159.1481	steady	increasing	increasing
56	5.31	157.1324	steady	increasing	increasing
57	5.48	139.0859	bell-like shape	bell-like shape	bell-like shape
58	5.6	173.0777	increasing	increasing	increasing
59	5.85	296.1709	decay	increasing	bell-like shape
60	6.07	173.1276	steady	steady	increasing
61	6.12	233.099	increasing	increasing	increasing
62	6.13	244.2013	steady	increasing	increasing
63	6.16	112.0745	increasing	increasing	increasing
64	6.16	256.1743	steady	steady	increasing
65	6.22	112.0757	increasing	increasing	increasing
66	6.36	224.0698	bell-like shape	bell-like shape	bell-like shape
67	6.69	215.1382	bell-like shape	increasing	increasing
68	6.84	217.1035	increasing	increasing	increasing
69	6.86	160.0739	bell-like shape	bell-like shape	bell-like shape
70	6.86	355.1591	bell-like shape	bell-like shape	bell-like shape
71	6.87	160.0747	bell-like shape	bell-like shape	bell-like shape
72	6.88	230.147	bell-like shape	bell-like shape	bell-like shape
73	6.89	142.0852	bell-like shape	bell-like shape	increasing
74	6.89	158.081	steady	increasing	increasing
75	6.91	187.0948	steady	steady	increasing

Transformation product number	Ret. time (min)	Measured m/z , [M+H] ⁺	TiO ₂ +Bias+UV	TiO ₂ +UV	UV
76	6.93	161.0636	steady	steady	bell-like shape
77	6.93	168.055	bell-like shape	increasing	increasing
78	6.95	102.0911	increasing	increasing	increasing
79	6.95	130.0853	increasing	increasing	increasing
80	6.95	311.1393	bell-like shape	bell-like shape	bell-like shape
81	6.96	172.1553	decay	increasing	decay
82	6.96	266.1593	decay	bell-like shape	bell-like shape
83	6.98	156.1027	bell-like shape	increasing	increasing
84	6.98	185.1261	bell-like shape	bell-like shape	bell-like shape
85	6.98	185.1268	bell-like shape	bell-like shape	bell-like shape
86	6.99	204.0651	bell-like shape	bell-like shape	bell-like shape
87	6.99	245.1855	steady	increasing	steady
88	7	393.1896	bell-like shape	bell-like shape	bell-like shape
89	7.01	160.0749	bell-like shape	bell-like shape	bell-like shape
90	7.01	316.1956	increasing	increasing	increasing
91	7.02	147.0548	bell-like shape	bell-like shape	bell-like shape
92	7.02	204.0645	bell-like shape	bell-like shape	bell-like shape
93	7.05	168.0594	bell-like shape	bell-like shape	bell-like shape
94	7.06	210.0904	bell-like shape	bell-like shape	bell-like shape
95	7.07	130.0854	bell-like shape	increasing	increasing
96	7.08	156.101	bell-like shape	bell-like shape	bell-like shape
97	7.09	190.1064	increasing	increasing	increasing
98	7.1	166.0492	increasing	increasing	increasing
99	7.1	174.1109	bell-like shape	bell-like shape	bell-like shape
100	7.11	347.1693	steady	steady	bell-like shape
101	7.14	147.0539	bell-like shape	bell-like shape	bell-like shape
102	7.14	196.0957	bell-like shape	bell-like shape	bell-like shape
103	7.15	372.1884	bell-like shape	bell-like shape	bell-like shape
104	7.16	223.0903	bell-like shape	bell-like shape	bell-like shape
105	7.16	385.2075	bell-like shape	bell-like shape	bell-like shape
106	7.16	385.2076	decay	increasing	increasing
107	7.17	223.0899	bell-like shape	bell-like shape	bell-like shape
108	7.19	114.0903	increasing	increasing	increasing
109	7.21	102.0911	increasing	increasing	increasing
110	7.25	147.0538	bell-like shape	bell-like shape	bell-like shape
111	7.27	144.101	bell-like shape	increasing	increasing
112	7.27	174.0536	bell-like shape	bell-like shape	bell-like shape
113	7.28	182.1173	increasing	increasing	increasing
114	7.35	271.1542	steady	steady	bell-like shape
115	7.41	158.1161	bell-like shape	increasing	increasing
116	7.43	230.0814	bell-like shape	bell-like shape	bell-like shape

Transformation product number	Ret. time (min)	Measured m/z , [M+H] ⁺	TiO ₂ +Bias+UV	TiO ₂ +UV	UV
117	7.43	102.097	increasing	increasing	increasing
118	7.46	312.2279	increasing	increasing	steady
119	7.56	123.0904	bell-like shape	bell-like shape	bell-like shape
120	7.6	174.0539	bell-like shape	increasing	bell-like shape
121	7.62	312.2646	increasing	increasing	steady
122	7.68	157.0955	steady	increasing	increasing
123	7.72	180.0794	bell-like shape	bell-like shape	bell-like shape
124	7.74	113.0594	increasing	increasing	increasing
125	7.74	220.0375	bell-like shape	bell-like shape	bell-like shape
126	7.8	213.1588	increasing	increasing	increasing
127	7.86	186.1118	bell-like shape	bell-like shape	bell-like shape
128	7.87	133.0456	bell-like shape	bell-like shape	bell-like shape
129	7.87	224.0658	bell-like shape	bell-like shape	bell-like shape
130	8.02	340.261	bell-like shape	increasing	steady
131	8.04	146.0586	bell-like shape	bell-like shape	bell-like shape
132	8.1	269.0922	bell-like shape	bell-like shape	bell-like shape
133	8.15	314.2792	increasing	increasing	steady
134	8.25	241.0601	bell-like shape	bell-like shape	steady
135	8.34	215.175	increasing	increasing	increasing
136	8.36	237.1558	increasing	increasing	increasing
137	8.38	368.2543	bell-like shape	bell-like shape	bell-like shape
138	8.47	180.0642	increasing	increasing	increasing
139	8.53	194.1164	bell-like shape	bell-like shape	bell-like shape
140	8.59	269.136	bell-like shape	bell-like shape	bell-like shape
141	8.61	273.1452	bell-like shape	bell-like shape	bell-like shape
142	8.61	275.0811	bell-like shape	bell-like shape	bell-like shape
143	8.7	166.5453	bell-like shape	bell-like shape	bell-like shape
144	8.7	251.0814	bell-like shape	bell-like shape	bell-like shape
145	8.73	194.1168	bell-like shape	bell-like shape	bell-like shape
146	8.8	253.0954	bell-like shape	bell-like shape	bell-like shape
147	8.86	251.0828	bell-like shape	bell-like shape	bell-like shape
148	8.91	264.1809	bell-like shape	bell-like shape	bell-like shape
149	8.93	257.1365	increasing	increasing	increasing
150	8.94	181.5246	bell-like shape	bell-like shape	bell-like shape
151	9	335.1974	bell-like shape	bell-like shape	bell-like shape
152	9.02	185.1139	decay	steady	bell-like shape
153	9.02	335.1965	bell-like shape	bell-like shape	bell-like shape
154	9.03	239.0825	steady	steady	bell-like shape
155	9.04	379.2132	bell-like shape	bell-like shape	bell-like shape
156	9.22	253.0988	bell-like shape	bell-like shape	bell-like shape
157	9.24	199.0926	bell-like shape	increasing	increasing

Transformation product number	Ret. time (min)	Measured m/z , [M+H] ⁺	TiO ₂ +Bias+UV	TiO ₂ +UV	UV
158	9.31	173.0702	bell-like shape	bell-like shape	bell-like shape
159	9.41	211.132	steady	steady	bell-like shape
160	9.42	267.0765	bell-like shape	bell-like shape	bell-like shape
161	9.66	298.0826	bell-like shape	bell-like shape	bell-like shape
162	9.69	196.0741	bell-like shape	bell-like shape	bell-like shape
163	9.89	206.06	bell-like shape	bell-like shape	bell-like shape
164	9.92	223.0865	bell-like shape	bell-like shape	bell-like shape
165	10.03	219.5092	bell-like shape	bell-like shape	bell-like shape
166	10.43	365.0531	bell-like shape	bell-like shape	bell-like shape
167	10.44	343.0687	bell-like shape	increasing	steady
168	10.86	267.1955	bell-like shape	bell-like shape	bell-like shape
169	10.87	343.0685	bell-like shape	bell-like shape	bell-like shape
170	10.94	241.0589	bell-like shape	bell-like shape	bell-like shape
171	10.96	282.0883	bell-like shape	bell-like shape	bell-like shape
172	10.97	343.0688	bell-like shape	bell-like shape	bell-like shape
173	11.01	298.0835	bell-like shape	bell-like shape	bell-like shape
174	11.02	225.1021	bell-like shape	bell-like shape	bell-like shape
175	11.52	261.1093	increasing	increasing	increasing
176	11.92	275.1647	bell-like shape	bell-like shape	bell-like shape
177	11.99	318.0558	bell-like shape	bell-like shape	bell-like shape
178	12.14	241.0611	bell-like shape	bell-like shape	bell-like shape
179	12.61	225.0643	steady	bell-like shape	bell-like shape
180	13.18	149.022	steady	steady	increasing
181	13.27	225.0653	bell-like shape	bell-like shape	bell-like shape
182	13.77	182.0082	increasing	increasing	increasing
183	14.99	237.184	bell-like shape	bell-like shape	bell-like shape
184	15.14	253.1792	bell-like shape	bell-like shape	bell-like shape
185	15.63	243.1743	bell-like shape	bell-like shape	bell-like shape
186	15.64	315.1955	bell-like shape	bell-like shape	bell-like shape
187	16.01	251.2007	decay	decay	bell-like shape
188	16.18	209.1529	bell-like shape	bell-like shape	bell-like shape
189	16.31	313.2377	steady	steady	increasing
190	16.77	313.2362	steady	steady	bell-like shape
191	17.27	206.0883	steady	steady	bell-like shape
192	17.76	251.1647	bell-like shape	bell-like shape	bell-like shape
193	17.93	255.2104	bell-like shape	bell-like shape	bell-like shape
194	18.06	329.2115	bell-like shape	bell-like shape	bell-like shape