

KNOWLEDGE, ANALYSIS
AND INNOVATIVE METHODS
FOR THE STUDY AND THE DISSEMINATION
OF ANCIENT URBAN AREAS



Proceedings of the KAINUA 2017
International Conference in Honour
of Professor Giuseppe Sassatelli's 70th Birthday
(Bologna, 18-21 April 2017)

edited by
Simone Garagnani, Andrea Gucci

ARCHEOLOGIA E CALCOLATORI

28.2

2017

All'Insegna del Giglio

KNOWLEDGE, ANALYSIS
AND INNOVATIVE METHODS
FOR THE STUDY AND THE DISSEMINATION
OF ANCIENT URBAN AREAS



Proceedings of the KAINUA 2017
International Conference in Honour
of Professor Giuseppe Sassatelli's 70th Birthday
(Bologna, 18-21 April 2017)

edited by
Simone Garagnani, Andrea Gaucci

ARCHEOLOGIA E CALCOLATORI

28.2

2017

All'Insegna del Giglio

Realizzazione grafica della sovracoperta di Marcello Bellisario
Rivista «Archeologia e Calcolatori» (ISSN 1120-6861, e-ISSN 2385-1953)
ISBN 978-88-7814-785-0, e-ISBN 978-88-7814-786-7
© 2017 – All’Insegna del Giglio s.a.s. – www.insegnadelgiglio.it
Firenze, dicembre 2017
Stampa, Andersen S.p.a.
Abbonamento: € 40,00. Spedizione: Italia, gratuita; estero, a carico del destinatario.

I dati forniti dai sottoscrittori degli abbonamenti vengono utilizzati esclusivamente per l’invio della pubblicazione e non vengono ceduti a terzi per alcun motivo.

TABLE OF CONTENTS

SIMONE GARAGNANI, ANDREA GAUCCI, ELISABETTA GOVI, <i>Ancient reality and contemporary research. An introduction to the Conference KAINUA 2017 and its Proceedings</i>	11
ANCIENT CITIES: PAST AND CURRENT PERSPECTIVES	
MARIO TORELLI, <i>From ruins to reconstruction: past and present</i>	27
PAOLA MOSCATI, <i>Archaeological computing and ancient cities: insights from the repository of «Archeologia e Calcolatori»</i>	47
KAINUA PROJECT	
GIOVANNANGELO CAMPOREALE†, <i>Sulla genesi della città nell'Italia preromana. Economia, sociologia, urbanistica: il caso dell'insediamento dell'Accesa</i>	69
ELISABETTA GOVI, <i>Kainua-Marzabotto: the archaeological framework</i>	87
ANDREA GAUCCI, <i>Kainua Project: principles, theoretical framework and archaeological analysis</i>	99
GIULIA MORPURGO, CHIARA PIZZIRANI, CHIARA MATTIOLI, <i>The craft settings in Kainua-Marzabotto: places and archaeological issues</i>	113
STEFANO SANTOCCHINI GERG, ENRICO ZAMPIERI, BOJANA GRUŠKA, GIACOMO MANCUSO, <i>Topographical survey and digital models</i>	129
SIMONE GARAGNANI, <i>Archaeological Building Information Modeling: beyond scalable representation of architecture and archaeology</i>	141
AURELIO MUZZARELLI, MALIK FRANZOIA, <i>The ancient Digital Terrain Model and the infrastructure of the Etruscan city of Kainua</i>	151
BOJANA GRUŠKA, GIACOMO MANCUSO, ENRICO ZAMPIERI, <i>Building materials and virtual models of the Etruscan city of Kainua</i>	165
GIUSEPPE SASSATELLI, <i>Kainua Project Special Session: conclusioni</i>	177
ETRUSCAN CITIES AND THEIR LANDSCAPES: NEW PERSPECTIVES, INNOVATIVE METHODS AND DISSEMINATION	
CARMINE PELLEGRINO, AMEDEO ROSSI, <i>Contemporary landscape and the archaeological record. An integrated approach to the study of the Etruscan-Samnite site of Pontecagnano (SA)</i>	189
MARIA PAOLA BAGLIONE, BARBARA BELELLI MARCHESINI, CLAUDIA CARLUCCI, LAURA MARIA MICHETTI, <i>Pyrgi, harbour and sanctuary of Caere: landscape, urbanistic planning and architectural features</i>	201

GIOVANNA BAGNASCO GIANNI, MATILDE MARZULLO, ANDREA GARZULINO, <i>The last ten years of research at Tarquinia</i>	211
GIUSEPPINA ENRICA CINQUE, HENRI BROISE, VINCENT JOLIVET, <i>Civita Musarna (VT), il suo territorio e la chora di Tarquinia in età ellenistica: uno spazio ritualmente suddiviso?</i>	223
PATRICIA S. LULOF, MAARTEN H. SEPERS, <i>The Acquarossa Memory Project. Reconstructing an Etruscan town</i>	233
EMANUELE TACCOLA, LISA ROSSELLI, <i>Understanding Etruscan art and architecture through 3D modeling: the case of Volterra</i>	243
TOMMASO QUIRINO, <i>Open architecture RDBMS and GIS as tools for analysing the Etruscan presence in the Po Plain: towards a model of the urban/non urban landscape</i>	253
FROM THE ANCIENT CITIES TO THE LANDSCAPES: PROJECTS AND RESEARCHES	
FRANK VERMEULEN, <i>Scanning and visualization of Roman Adriatic townscapes</i>	269
ALESSANDRO CAMPEDELLI, MARCO DUBBINI, MARTINA MONICA, <i>Geo-archaeological study of the territory of Burnum's Roman site (Croatia) through LANDSAT multi-temporal satellite images and high resolution GeoEye</i>	277
ILARIA ROSSETTI, <i>Reshaping the urban space: Bakchias in Ptolemaic and Roman times</i>	291
FEDERICA BOSCHI, ENRICO GIORGI, MICHELE SILANI, <i>Reconstructing the ancient urban landscape in a long-lived city: the Asculum Project – combining research, territorial planning and preventative archaeology</i>	301
FERRAN CODINA, GABRIEL DE PRADO, ISIS RUIZ, ALBERT SIERRA, <i>The Iberian town of Ullastret (Catalonia). An Iron Age urban agglomeration reconstructed virtually</i>	311
ANNA CHIARA FARISELLI, FEDERICA BOSCHI, MICHELE SILANI, MELANIA MARANO, <i>Tharros – Capo San Marco in the Phoenician and Punic Age. Geophysical investigations and virtual rebuilding</i>	321
SIMONE MANTELLINI, <i>A city and its landscape across time: Samarkand in the ancient Sogdiana (Uzbekistan)</i>	333
STARTING AND ONGOING PROJECTS	
STEFANO FINOCCHI, VINCENZO BALDONI, <i>Numana and its ancient territory: new data and research perspectives</i>	345

GIUSEPPE LEPORE, ENRICO GIORGI, VINCENZO BALDONI, FEDERICA BOSCHI, MARIA CONCETTA PARELLO, MARIA SERENA RIZZO, <i>New methodologies to analyze and study the Hellenistic-Roman quarter in Agrigento</i>	353
MICHELE SILANI, ENRICO GIORGI, FEDERICA BOSCHI, GABRIELE BITELLI, ALBERTA MARTELLONE, <i>Seeing into the past: integrating 3D documentation and non-invasive prospecting methods for the analysis, understanding and reconstruction of the ancient Pompeii. The case of the House of Obellio Firmo (IX, 14)</i>	361
ISABEL ESCRIVÀ, JOSÉ J. MARÍN, ALBERT RIBERA, MIQUEL ROSSELLÓ, ALFREDO SANTONJA, <i>Reconstructing the Late Antiquity Episcopal Complex of Valentia</i>	369
GERVASIO ILLIANO, <i>Misenum: the harbour and the city. Landscapes in context</i>	379
VALERIA POSCETTI, SAVERIO GIULIO MALATESTA, VIRGINIA CIRILLI, FRANCESCO LELLA, VITO RONDINELLI, SALVATORE ESPOSITO, MARCO BALSÌ, <i>Preliminary results of the Castelmonardo Project</i>	391
METHODOLOGIES, APPLICATIONS AND INTEGRATED SOLUTIONS	
MARIA ROUSSOU, FRANCESCO RIPANTI, KATERINA SERVI, <i>Engaging visitors of archaeological sites through “emotive” storytelling experiences: a pilot at the Ancient Agora of Athens</i>	405
MARCO GAIANI, <i>Management and communication of archaeological artefacts and architectural heritage using digital IS. What today? What next?</i>	421
ANDREA D’ANDREA, ANGELA BOSCO, MARCO BARBARINO, <i>A 3D environment to rebuild virtually the so-called Augusteum in Herculaneum</i>	437
GIOVANNA LIBEROTTI, CORRADO ALVARO, <i>Using laser scanner technology to analyse mud-brick architecture in the ancient Near East. The Palatial Complex of Arslantepe (Malatya, Turkey)</i>	447
MOISÉS HERNÁNDEZ CORDERO, <i>Geomatics approach to surveys for Late Antiquity buildings. The Episcopal Palace in Side, Turkey</i>	457
FILIBERTO CHIABRANDO, GIULIA SAMMARTANO, ANTONIA SPANÒ, GRAZIA SEMERARO, <i>Multi-temporal images and 3D dense models for archaeological site monitoring in Hierapolis of Phrygia (TR)</i>	469
ELISABETTA DONADIO, RICCARDO MAZZA, FEDERICO BARELLO, <i>Multimedia digital solutions from image and range based models for ancient landscapes communication</i>	485
VALERIA CERA, <i>Knowledge and valorization of historical sites through low-cost, gaming sensors and H-BIM models. The case study of Litternum</i>	497

ALFONSO IPPOLITO, MARTINA ATTENNI, CRISTIANA BARTOLOMEI, <i>Digital acquisition: reflections on data quality</i>	507
AARON PATTEE, ARMIN VOLKMANN, MATTHIAS UNTERMANN, <i>Integrative GIS-based investigation of the medieval fortress architecture of Pfalz, incorporating photogrammetry, geoinformatics and landscape analysis</i>	521
JACOPO BONETTO, ARTURO ZARA, <i>The Nora Virtual Tour: an immersive visit in the ancient city</i>	531
SILVIA BERNARDONI, MARCO MONTANARI, RAFFAELE TROJANIS, <i>Open History Map</i>	539
GIOVANNI AZZENA, ROBERTO BUSONERA, CHIARA PERINI, <i>The future (?) of effective protection</i>	549
SHORT PAPERS	
SARA LORETO, <i>Gropello Cairoli (PV): computer applications for historical-topographic synthesis</i>	563
ANNACHIARA PENZO, FEDERICA PRONI, ANTONIO GOTTARELLI, <i>The archaeological settlement of Monte Bibebe (Bologna)</i>	571
ILENIA GRADANTE, DAVIDE TANASI, <i>3D digital technologies for architectural analysis. The case of the “Pagan Shrine” in the Catacombs of Santa Lucia (Siracusa, Sicily)</i>	581
FRANCESCO GABELLONE, IVAN FERRARI, <i>Reconstruction of Villino Florio’s wooden ceiling using 3D technologies</i>	587
FRANCESCO GABELLONE, IVAN FERRARI, FRANCESCO GIURI, MARIA CHIFFI, <i>3D technologies for a critical reading and philological presentation of ancient contexts</i>	591
ANTONIO PECCI, FABIO DONNICI, <i>When there was no GIS system: rediscovering archaeological researches of the 19th century through the use of the drone. The case study of Mount Siri (Anzi, Basilicata)</i>	597
MARTIJN VAN DER KAAIJ, <i>Heron Visualisation Engine. Visualisation and dissemination of semantic cultural heritage data</i>	603
TATIANA VOTROUBEKOVÁ, <i>Etruscan rock-cut tombs with decorated façades. A 3D approach</i>	609

THE LAST TEN YEARS OF RESEARCH AT TARQUINIA

The Centro di Ricerca Coordinata “Progetto Tarquinia” of the Università degli Studi di Milano is a League of European Research Universities (LERU) exemplary interdisciplinary research project that involves groups from the Università Statale di Milano (Archaeology, Information and Communication Technologies, Geoarchaeology, Palaeoanthropology), the Politecnico di Milano (Architecture and Topography) and bridges the gap between soft and hard sciences. This project stems from the “Progetto Tarquinia” conceived by Maria Bonghi Jovino in 1982 (BONGHI JOVINO 2010).

In the past ten years our integrated system of tools and services, supported by ICTs (ArchMatrix), through which multidisciplinary domain experts can examine all the typologies of data of a given culture (BARRICELLI *et al.* 2015), has made it possible to concentrate on the links between data-sources focusing on the recurrence of association rates within different aspects of material evidence and of phenomena (BAGNASCO GIANNI *et al.* 2013).

The fields of application of our methodology in the domain of archaeology and epigraphy are multifaceted as regards the inside and outside connections of the Tarquinian heritage, whose necropolis with the famous painted tombs is a UNESCO World Heritage Site. Research includes areas of the Civita plateau: the “monumental complex”, the Ara della Regina sanctuary, fortifications, and archaeological sites previously explored. In the past ten years, research in the necropolis (roughly 6,000 tombs, of which 400 are painted) and in the territory has also been implemented and has produced the complete corpus of the painted tombs of Tarquinia (MARZULLO 2016, 2017).

Our holistic approach encompasses archaeological analysis of small (mobile finds), medium (archaeological contexts) and large scale (territory and landscape) architectural analysis and applications for integrated solutions for the cultural heritage. We implemented the first bilingual Virtual Museum dedicated to an Etruscan city (BAGNASCO GIANNI *et al.* 2007), now available on-line (www.tarchna.it), which offers a dynamic overview of the cultural heritage of Etruscan Tarquinia and the first application dedicated to the results of international groups working in the area of Etruscology (<http://www.etruscologia.unimi.it/index.php/progetti/80-progetti/127-etruscanexpo-project>).

1. DEALING WITH IMAGES OF RUINS, SHARDS, EPIGRAPHIC TEXTS AND MARKINGS (*SIGLA*)

Such multifaceted evidence involves different degrees of reliability. A first application of our procedure focuses on the recurrence of the same association

of details in pottery by means of the study of the features of every single fragment in order to reconstruct the formal and stylistic choices of the community influencing the basic models of the local pottery production conceived for the inhabited site. Such hypothetical reconstructions might be supported by archaeometry, since we can take advantage of a reliable identity card of the local Tarquinian productions in their articulations and compare the ceramic body of the shards we presume belong to the same production in order to verify our hypotheses of reconstruction (BRUNI 2007).

For example, the study of Tarquinian depurated wares has demonstrated that objects from inhabited and funerary areas can be similar but not perfectly match one another, and even minor differences in details might have relevant symbolic meanings that illuminate articulated Etruscan approaches to foreign ones (BAGNASCO GIANNI 1999, 2007).

A second application concerns the identification of a similar recurrence of associations of objects in different stratigraphic units or in different funerary contexts, even if plundered. Recurrence of phenomena guarantees the existence of minimal sets that can be compared and contrasted to others in order to attain the next step, which is the reconstruction of the entire equipment, as happens with funerary equipment (BAGNASCO GIANNI 2002).

A third application concerns the assessment of the purpose of single objects or sets of objects within their original contexts in order to understand their proper role and, as a consequence, the related behaviours and actions. The results of such an application are also crucial for interpreting epigraphic evidence, often fragmentary and formed by text and markings. These markings, called *sigla*, are studied within the framework of the “International Etruscan *Sigla* Project” (IESP), a joint undertaking of the Università degli Studi di Milano and Florida State University, with the aim of investigating their potential for communication (BAGNASCO GIANNI, DE GRUMMOND in press). By means of a semantic network that enables the integration of different data, we expect to verify the existence of recurrent associations among similar *sigla*, between *sigla* and their location on the artifact and between *sigla* and their archaeological contexts, and foster their interpretation (<http://159.149.130.120/IESP/>).

A fourth application monitors recurring archaeological features among different areas of the Tarquinian sanctuaries. Given the exceptional framework of the “monumental complex”, the Ara della Regina sanctuary and the emporic sanctuary of Gravisca (BAGNASCO GIANNI, FIORINI in press), it is possible that a number of selected structures were used as visual references. Such visible arrangements were employed to mark space over time and reflect the concepts of memory, authoritativeness and identity that are crucial for the survival of traditions for the majority of the ancient communities. Their presence also rules space and deserves attention because of potential effects

on the circulation of persons all around the different premises (BAGNASCO GIANNI 2005, 2012).

In other words, such an approach is based on the dialectic comparison between the purpose or function suggested by direct observation, for example of the shape of an object or monument, and of its effective pragmatic use, which can be assessed from time to time according to different series of contexts – taken separately or together, when all present – such as the archaeological, epigraphic and iconographic (BAGNASCO GIANNI 2008).

Therefore, concentrating on the syntax linking the separate units of the evidence we deal with, we finally identify what might help to locate actions and behaviours in the general setting of iconographic, archaeological, and topographic “sites” and their related “landscapes”.

G.B.G.

2. THE ARCHAEOLOGICAL ANALYSIS OF THE ANCIENT CITY AND ITS LANDSCAPES

Research started in 1997 when Maria Bonghi Jovino approached the situation of the Civita plateau with an overview of the aerial photos and recognition of the fortifications (BONGHI JOVINO 1997; HARARI 1997). It subsequently involved a systematic study of the circuit of the fortifications, carried out in collaboration with the Politecnico di Milano in the framework of a national project (*Mura tarquiniesi*, PRIN 2008), aiming at the reconstruction of the city extension enclosed within the walls, by reconsidering the infrastructures, the palimpsest of the signs from a historical point of view and the relations with the settlement phases (BAGNASCO GIANNI 2014). All the available cartographies and aerial photos were collected and analyzed. The research continued with an extended interpretation of the signs that characterize the area of the Civita, and took into account the geomorphological and structural aspects (BORTOLOTTI, FAVINO, SIMONELLI 2014). On that occasion it was decided to perform a laser scanner survey Light Detection And Ranging (LiDAR) of the entire territory: this technology, used here for the first time at a national level for purely archaeological purposes, made it possible to identify each geomorphological discontinuity of the plateau, bringing back the digital elevation model as a point cloud, for an area of about 90 ha (GARZULINO, PEREGO, ZERBONI 2014).

The encouraging results obtained through investigation of the fortifications (MARZULLO 2014) launched a new stage of the research in cooperation with the Soprintendenza Archeologia, Belle Arti e Paesaggio per l'area metropolitana di Roma, la provincia di Viterbo e l'Etruria meridionale (RUSSO, TRUCCO 2015), which produced a new and updated archaeological heritage map of the entire settlement (Fig. 1).

The comparative study of signs related to each cartographic threshold, carried out by inserting data into a Geographic Information System, has

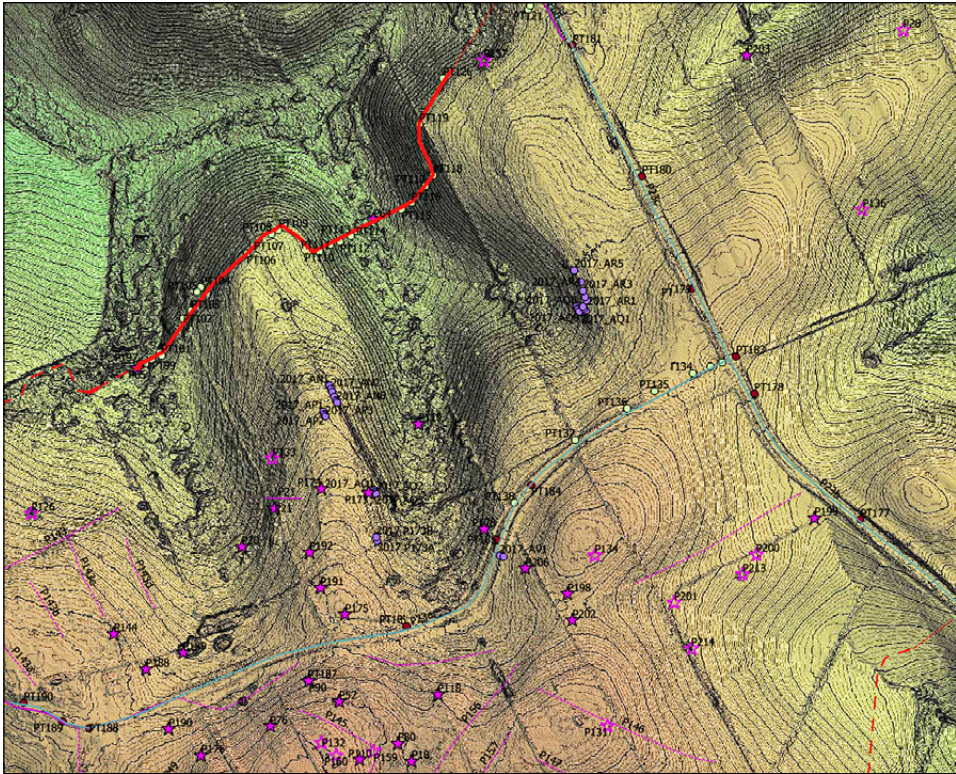


Fig. 1 – LiDAR Digital Terrain Model with the location of the elevation curves every meter and of the sites composing the archaeological heritage map of the Civita plateau.

highlighted the elements that form the palimpsest of the Civita, which can be both ancient and modern. In this regard, the systematic analysis of the historical documentation and of the thematic representations from the Renaissance to the present made it possible to understand which of these elements were ancient, while at the same time extending the basis of available information. The LiDAR data processing produced the most updated, accurate and comprehensive cartographic base of the plateau. Thanks to its versatility – to the capability to isolate the different materials that compose the surfaces, to exclude the vegetation, to measure the height and extension of the geomorphological evidence, and to observe all cartographic representation, consistently shaped according to the conformation of the territory – it was possible to georeference very precisely all the information collected.

One of the most significant results is the assessment of about 220 sites including a number of unknown or poorly known sites. Each one has been

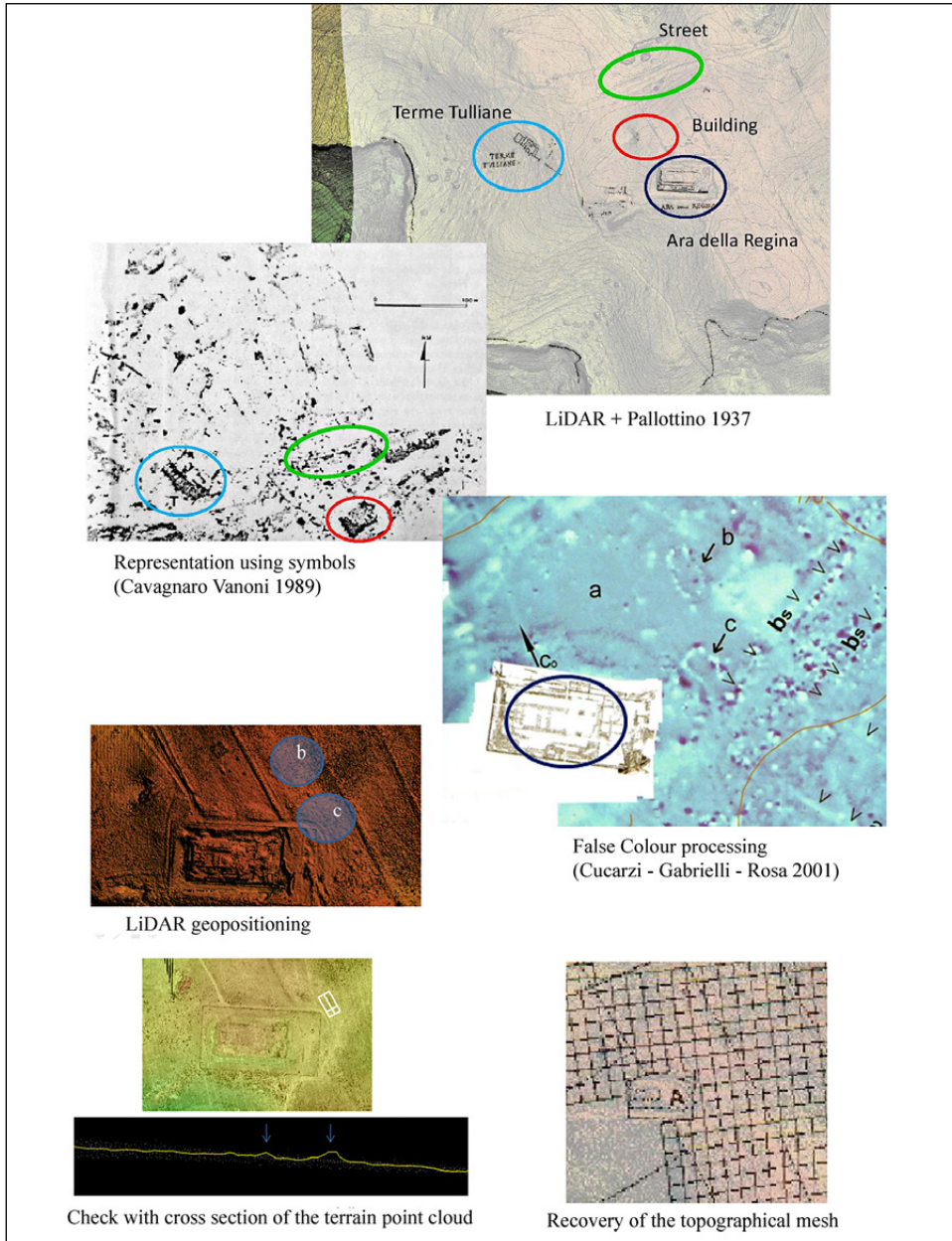


Fig. 2 – GIS comparison between signs concerning buried archaeological remains and the results of magnetometry; check of every single sign by querying the LiDAR point cloud; positioning of the mesh with the topographic cornerstones.

examined in a systematic way, and the GIS has been provided of specific links to data sheets that contain information about the location, chronology, description, graphic documentation and bibliography of each element identified.

If, on the one hand, this is a remarkable achievement itself because it had been impossible to observe so much information together in a single topographic view before, on the other hand, this is just the starting point for further researches. One of these concerns an implementation of this open system, which now makes it possible to recover a set of fundamental spatial information, resulting from the geophysical prospections carried out by the Fondazione Lerici between the 1960s and 1980s. While the Monterozzi prospections detected approximately 6,000 tombs, in the Civita the data analysis was not brought to the same level of detail: the output of the prospections were not processed in a synthesis embracing the entire data. The global analysis was focused exclusively on the subject of road networks, highlighting the anomalies hypothetically related to road alignments (CAVAGNARO VANONI 1989).

It is clear that the particular value of such achievements lies in the scope and breadth of the work, which is difficult to replicate in modern times, but also in the uniqueness of the conditions of the plateau at that time, not yet polluted by waste and metal objects. Although the reliability of such acquisitions has never been argued, the main issues that have prevented experts from the use of prospections concern the amount of data, the difficulty of interpretation, and the topographic positioning. The first two topics will be discussed in a specific contribution, whereas in the present contribution we will focus on the third. The Lerici system is set according to the magnetic N, which does not correspond to the geographic N. In addition, each square of the basic grid on the map corresponds to a predetermined linear length, and does not take into account the geomorphology of the terrain. This means that the Lerici's cornerstone mesh does not match the corresponding physical limits of the same area on any maps. We must also consider that to produce some of the larger-scale diagrams, the results of the acquisitions have been reduced and merged like a mosaic, producing distortions, which are considerable in some cases. This means that to retrieve the data, we have to properly position the topographical mesh on the ground, molding it according to the existing rugged terrain. This is hampered by the disappearance of the geographical references to the topographical marks used at those times to place the grid. Without such data, the only elements on which we can now rely are the immutable signs still readable in the territory and discernible in the Lerici output.

The GIS containing all the maps and the reliable archaeological evidence described above, combined with the precision and versatility of the output of LiDAR processing, were crucial to solving such problems. It was possible to compare signs clearly associated with buried archaeological

remains to the results of magnetometry, verify this data set by querying the LiDAR point cloud and obtain their appropriate positioning. This allowed to overcome the issue created by the disappearance of the topographic mesh cornerstones (Fig. 2).

The result we achieved is to re-anchor the geophysical prospecting outcomes to the territory and numerous terms of reliable comparison for data analysis – essential tools to tackle the reconstruction of the urban dimensions of Tarquinia.

In this context, the above mentioned integrated system of tools developed at the interdisciplinary level (ArchMatrix) provide a set of services for federating different existing data-sources (GIS, including 3D tools), through the definition of a semantic network of relationships among landscapes, stratigraphic layers, structures and artefacts. Therefore it allows to switch from territorial scale to the scale of the structures within the archaeological sites and from this to the dimensions of the findings, successfully managing related searches among all the topics identified in the GIS Archaeological Map and thereby facilitating the comparison between different series of evidence within the same town. Our project, of course, aims to reach an overview as exhaustive as possible and a specific chronological definition of archaeological evidence identified so far, in order to offer an updated diachronic interpretation of the city, the territory and its occupation.

M.M.

3. ARCHITECTURE: RESEARCH DOCUMENTATION, ANALYSIS, RESTITUTION

The research documentation activities are framed within the cognitive actions to define and understand the history of historical artifacts and their distinctive features. The analysis of several data, gradually refined and discretized, leads, in fact, to the representation of all the information considered useful for the transmission of the acquired knowledge (BERTOCCI, BINI 2012). Therefore, the consideration of survey and representation activity as a mechanical application of specific operations, instrumentations or software is very reductive, particularly in the case in which we have to deal with discontinuous and complex situations such as in the archaeological field.

From the point of view of architectural and virtual reconstruction concerning the Tarquinian structures (both in cities and tombs), it was decided to implement the solutions developed on an interdisciplinary basis during the last ten years (BAGNASCO GIANNI *et al.* 2013; MARZULLO 2016).

Although the operations are shared and the instruments are clearly known by now (BONGHI JOVINO, BAGNASCO GIANNI 2012), the large variability and wealth of the Tarquinian scenario offers a unique testing ground to fine-tune and verify new methods and strategies.

For example, the “monumental complex” shows very particular and heterogeneous geometric, morphological, material and constructive characteristics, which are very difficult to document, survey and represent simply using predefined tools and techniques.

One of the greatest strengths consists in the joint choice of the data collection methodology by architects and archaeologists, focusing on what is considered necessary to represent.

We make use of both direct survey techniques and the great variety of indirect methods (CAMPANELLA 2017) for more complex and articulate contexts, by defining the operations to be used each time and with mutual consent. In fact, the combination of topographic surveys through total station, two-dimensional photogrammetry, laser scanning and three-dimensional photogrammetry, which takes advantage of image-based modeling and structure from motion systems makes it possible to obtain all the necessary information from both the archaeological and the architectural point of view.

The case of the “monumental complex” is also particularly emblematic from the point of view of architectural analysis and reconstruction of the structures. Here, the built remains, often isolated and, at first glance, without reciprocal connections, seem similar to one another with regard to their materials and construction techniques, elements that remain substantially unchanged over the centuries. The archaeological research on the contexts has highlighted how these structures sometimes do not constitute parts of buildings, but are symbols deliberately left in memory of actions that occurred in the same place even many decades or centuries before. For this reason, it is very important that each built structure must be evaluated from a structural and architectural point of view both as a whole and in its individual elements. It was therefore decided to devise more specific investigations capable of better defining their characteristics. The purpose is the creation of a constructive set collector containing the mineralogical and petrographic analysis results, the study of the microstructure and the physical-chemical characterization of materials, the geometrical and morphological investigations, as well as the mechanical characteristics of the structures and of the single elements that compose them. The combination of this information, managed through the above mentioned ArchMatrix system, can integrate the excavation data, simplifying the phase of study, dating and archaeological interpretation. At the same time, this data-set is crucial in the assessment of the conservation state of the structures and in the selection of the most suitable materials and intervention techniques for their conservation.

In conclusion, the overall evaluation of the archaeological, architectural, compositional and structural elements, performed from a historical viewpoint with direct and indirect comparisons, aims to recreate the real consistency of

the structures during their lifetime. This, of course, fosters their representation, which is founded on certain and reliable data from which reconstructing the perception of lost evidence.

A.G.

GIOVANNA BAGNASCO GIANNI, MATILDE MARZULLO
Università degli Studi di Milano
Dipartimento di Beni Culturali e Ambientali
giovanna.bagnasco@unimi.it, matilde.marzullo@unimi.it

ANDREA GARZULINO
Politecnico di Milano
Dipartimento di Architettura e Studi Urbani
andrea.garzulino@polimi.it

REFERENCES

- BAGNASCO GIANNI G. 1999, *La ceramica etrusca depurata acroma e a bande*, in C. CHIARAMONTE TRERÉ (ed.), *Tarquinia. scavi sistematici nell'abitato. Campagne 1982-88. I materiali 1*, Roma, L'Erma di Bretschneider, 99-176.
- BAGNASCO GIANNI G. 2002, *Introduzione*, in G. BAGNASCO GIANNI (ed.), *Cerveteri. Importazioni e contesti nelle necropoli ceretane*, Quaderni di Acme 52, Milano, Cisalpino, XIII-XX.
- BAGNASCO GIANNI G. 2005, *Sui "contenitori" arcaici di ex-voto nei santuari etruschi*, in A.M. COMELLA, S. MELE (eds.), *Depositi votivi e culti dell'Italia Antica dall'età arcaica a quella tardo-repubblicana. Atti del Convegno (Perugia 2000)*, Bari, Edipuglia, 351-358.
- BAGNASCO GIANNI G. 2007, *Le ricerche sulle ceramiche depurate a Tarquinia: tra importazioni e produzioni locali*, in D. FRÈRE (ed.), *Ceramiche fini a decoro subgeometrico del VI secolo a.C. in Etruria meridionale e in Campania. Atti del Seminario Les céramiques fines à décor non figuré du VI^e s. Etrurie méridionale et Campanie (Rome 2003)*, Rome, École française de Rome, 93-99.
- BAGNASCO GIANNI G. 2008, *Archaeology as research engine in the field of cultural heritage. The case of the T.Arc.H.N.A. Project*, in G. BAGNASCO GIANNI (ed.), *Bridging Archaeological and Information Technology Culture for Community Accessibility (Milan 2007)*, Roma, L'Erma di Bretschneider, 39-45.
- BAGNASCO GIANNI G. 2012, *Tarquinia, tra spazio e tempo. Appunti da una ricerca in corso*, in C. CHIARAMONTE TRERÉ, G. BAGNASCO GIANNI, F. CHIESA (eds.), *Interpretando l'Antico. Scritti di Archeologia offerti a Maria Bonghi Jovino*, Milano, Cisalpino, 23-34.
- BAGNASCO GIANNI G. 2014, *Presenza/Assenza di Mura: implicazioni storico-culturali. Il caso di Tarquinia*, in BARTOLONI, MICHETTI 2014, 429-453.
- BAGNASCO GIANNI G., BORTOLOTTO S., FAVINO P., GARZULINO A., MARZULLO M., RIVA E., SIMONELLI R., VALTOLINA S., ZERBONI A. 2013, *Past & Present at Tarchna & Tarquinia: A flexible approach to make visible the invisible*, in M. BORIANI, R. GABAGLIO, D. GULOTTA (eds.), *Built Heritage 2013 – Monitoring, Conservation and Management. Proceedings of the International Conference (Milano 2013)*, Milano, Politecnico di Milano – Centro per la Conservazione e Valorizzazione dei Beni Culturali, 163-175.
- BAGNASCO GIANNI G., DE GRUMMOND N. in press, *Introducing the International Etruscan Sigla Project, in Etruscan Literacy in its Social Context. Institute of Classical Studies University of London (London 2010)*.
- BAGNASCO GIANNI G., FIORINI L. in press, *Between Tarquinia and Gravisca*, in E. GAILLEDRAT, R. PLANA-MALLART, M. DIETLER (eds.), *The Emporion. Trade and Encounters in the Colonial Western Mediterranean, from the Archaic to the Hellenistic Period*.

- BAGNASCO GIANNI G., MUSSIO P., VALTOLINA S., GEROLI M., RIDI C. 2007, *Il sistema T.Arc.H.N.A. Per una nuova accessibilità al patrimonio culturale*, «Archeologia e Calcolatori», 18, 255-272.
- BARRICELLI B.R., GADIA D., GARZULINO A., MARZULLO M., PIAZZI C., VALTOLINA S. 2015, *Participatory action design research in archaeological context*, in J. ABDELNOUR NOCERA, B.R. BARRICELLI, A. LOPES, P. CAMPOS, T. CLEMMENSEN (eds.), *Human Work Interaction Design. Work Analysis and Interaction Design Methods for Pervasive and Smart Workplaces*, Series IFIP Advances in Information and Communication Technology 468, London, Springer International Publishing, 192-211.
- BARTOLONI G., MICHETTI L.M. (eds.) 2014, *Mura di legno, mura di terra, mura di pietra: fortificazioni nel Mediterraneo antico. Atti del Convegno Internazionale (Roma 2012)*, «Scienze dell'Antichità», 19, 2/3.
- BERTOCCI S., BINI M. 2012, *Manuale di rilievo architettonico e urbano*, Torino, Città Studi Edizioni.
- BONGHI JOVINO M. 1997, *Le ricerche preliminari*, in M. BONGHI JOVINO, C. CHIARAMONTE TRERÈ (eds.), *Tarquinia. Testimonianze archeologiche e ricostruzione storica. Scavi sistematici nell'abitato. Campagne 1982-1988*, Roma, L'Erma di Bretschneider, 1-2.
- BONGHI JOVINO M. 2010, *The Tarquinia Project: A summary of 25 years of excavation*, «American Journal of Archaeology», 114, 161-180.
- BONGHI JOVINO M., BAGNASCO GIANNI G. (eds.) 2012, *Tarquinia: il santuario dell'Ara della Regina: i templi arcaici*, Roma, L'Erma di Bretschneider.
- BORTOLOTTO S., FAVINO P., SIMONELLI R. 2014, *Mura Tarquinesie: lettura delle permanenze attraverso le foto aeree e la cartografia storica*, in BARTOLONI, MICHETTI 2014, 122-130.
- BRUNI S. 2007, *Studio archeometrico delle ceramiche depurate da Tarquinia*, in D. FRÈRE (ed.), *Ceramiche fini a decoro subgeometrico del VI secolo a.C. in Etruria meridionale e in Campania. Atti del Seminario Les céramiques fines à décor non figuré du VI^e s. Etrurie méridionale et Campanie (Rome 2003)*, Rome, École française de Rome, 165-173.
- CAMPANELLA C. (ed.) 2017, *Il rilievo degli edifici. Metodologie e tecniche per il progetto di intervento*, Palermo, Dario Flaccovio.
- CAVAGNARO VANONI L. 1989, *Intervento alla Civita di Tarquinia della Fondazione Lerici*, in *Atti del Secondo Congresso internazionale Etrusco (Firenze 1985)*, «Studi Etruschi», Suppl. I, Roma, Giorgio Bretschneider, 341-345.
- CUCARZI M., GABRIELLI D., ROSA C. 2001, *Gli interventi della Fondazione Lerici all'Ara della Regina: lettura parziale del territorio circostante mediante magnetometria e carotaggi*, in A.M. SGUBINI MORETTI (ed.), *Tarquinia etrusca: Una nuova storia. Catalogo della mostra (Tarquinia 2001)*, Roma, L'Erma di Bretschneider, 61-65.
- GARZULINO A., PEREGO A., ZERBONI A. 2014, *Mura tarquinesie: lettura delle evidenze (Lidar) e degli aspetti geoarcheologici*, in BARTOLONI, MICHETTI 2014, 131-140.
- HARARI M. 1997, *Tarquinia e il territorio suburbano nel rilevamento ad alta quota: una lettura topografica*, in M. BONGHI JOVINO, C. CHIARAMONTE TRERÈ (eds.), *Tarquinia. Testimonianze archeologiche e ricostruzione storica. Scavi sistematici nell'abitato. Campagne 1982-1988*, Roma, L'Erma di Bretschneider, 5-17.
- MARZULLO M. 2014, *Mura Tarquinesie: definizione dei limiti*, in BARTOLONI, MICHETTI 2014, 141-148.
- MARZULLO M. 2016, *Grotte Cornetane. Materiali e apparato critico per lo studio delle tombe dipinte di Tarquinia*, Milano, Ledizioni.
- MARZULLO M. 2017, *Spazi sepolti e dimensioni dipinte nelle tombe etrusche di Tarquinia*, Milano, Ledizioni.
- PALLOTTINO M. 1937, *Tarquinia*, «Monumenti antichi», 36, cc. 5-615.
- RUSSO A., TRUCCO F. 2015, *Verso la creazione di un "Sistema Lazio": la collaborazione istituzionale con la Soprintendenza per i Beni Archeologici dell'Etruria Meridionale*, in M. SERLORENZI, G. LEONI (eds.), *Il SITAR nella Rete della ricerca italiana. Verso la conoscenza archeologica condivisa. Atti del III Convegno (Roma 2013)*, «Archeologia e Calcolatori», Suppl. 7, 75-80.

ABSTRACT

The Centro di Ricerca Coordinata “Progetto Tarquinia” of the Università degli Studi di Milano is a LERU (League of European Research Universities) exemplary interdisciplinary research project that involves groups from the Università Statale di Milano (Archaeology, Information and Communication Technologies, Geoarchaeology, Palaeoanthropology), the Politecnico di Milano (Architecture and Topography) and bridges the gap between soft and hard sciences. This project stems from the “Progetto Tarquinia” conceived by Maria Bonghi Jovino in 1982. During the last ten years, our integrated system of tools and services, supported by ICTs (ArchMatrix), through which multidisciplinary domain experts can examine all the typologies of data of a given culture, has made it possible to concentrate on the links between data-sources focusing on the recurrence of association rates within different aspects of material evidence and phenomena. The fields of application of our methodology in the domain of archaeology and epigraphy are multifaceted as regards the inside and outside connections of the Tarquinian heritage, whose necropolis with the famous painted tombs is a UNESCO World Heritage Site. Research includes areas of the Civita plateau: the “monumental complex”, the Ara della Regina sanctuary, fortifications, and archaeological sites previously explored. In the past ten years, research in the necropolis (roughly 6,000 tombs, of which 400 are painted) and in the surrounding territory has also been implemented and has produced the complete corpus of the painted tombs of Tarquinia. Our holistic approach encompasses archaeological analysis of small (mobile finds), medium (archaeological contexts) and large scale (territory and landscape) architectural analysis and applications for integrated solutions for the cultural heritage, including the first bilingual Virtual Museum dedicated to an Etruscan city.

28.2

2017

Knowledge, Analysis and Innovative Methods
for the Study and the Dissemination of Ancient Urban Areas
Proceedings of the KAINUA 2017 International Conference

€ 72,00

ISSN 1120-6861

e-ISSN 2385-1953

ISBN 978-88-7814-785-0

e-ISBN 978-88-7814-786-7



9 788878 114785 0

ARCHEOLOGIA
E CALCOLATORI