



International Summer School

Campus Arata  
Piacenza, via Scalabrini 76  
5-23 settembre 2016

2016

INTERNATIONAL  
SUMMER SCHOOL  
PIACENZA 2016



**POLITECNICO  
MILANO 1863**  
SCUOLA DI  
ARCHITETTURA URBANISTICA  
INGEGNERIA DELLE COSTRUZIONI  
Polo Territoriale di Piacenza  
Via Scalabrini 76  
29100 Piacenza

**LANDSCAPE IN MOTION**

**OC - Open City** Piacenza 2016  
**INTERNATIONAL  
SUMMER SCHOOL**  
from landscape to exterior design

Guya Bertelli  
Carlos García Vázquez  
Sara Protasoni  
Victor Téñez Ybern

a cura di Paola Bracchi

Graphic Design by Ester Dedé

STRUMENTI  
DIDATTICI

ARCHITETTURA  
INGEGNERIA  
SCIENZE

politecnica



Promoters:



Con il patrocinio di:



Evento supportato da:



Media Partner:



Partners:

Escuela Técnica Superior de Arquitectura de Sevilla  
Escuela Técnica Superior de Arquitectura de Barcelona  
École Nationale Supérieure d'Architecture de Marseille

La pubblicazione è stata sostenuta da:



Il Premio Piacenza 2016 è stato sostenuto da:

Fondazione degli Architetti, P. P. e C.  
di Parma e Piacenza



## Landscape in motion

Guya Bertelli - Politecnico di Milano, Dipartimento di Architettura e Studi Urbani (DASU)

Carlos García Vázquez, Escuela Técnica Superior de Arquitectura de Sevilla (ETSAS)

Sara Protasoni, Politecnico di Milano, School of Architettura, Urbanistica, Ingegneria delle costruzioni AUIC

Victor Ténez Ybern, Escuela Técnica Superior de Arquitectura de Barcelona (ETSAB)

A cura di

Paola Bracchi - Politecnico di Milano, Dipartimento di Architettura e Studi Urbani (DASU)

**ISBN 978-88-916-2414-7**

**© Copyright 2016 by Maggioli S.p.A.**

È vietata la riproduzione, anche parziale, con qualsiasi mezzo effettuata, anche ad uso interno e didattico, non autorizzata.

**Maggioli Editore è un marchio di Maggioli S.p.A.**

**Azienda con sistema qualità certificato ISO 9001:2000**

47822 Santarcangelo di Romagna (RN) • Via del Carpino, 8

Tel. 0541/628111 • Fax 0541/622020

[www.maggioli.it/servizioclienti](http://www.maggioli.it/servizioclienti)

e-mail: [clienti.editore@maggioli.it](mailto:clienti.editore@maggioli.it)

Diritti di traduzione, di memorizzazione elettronica, di riproduzione e di adattamento, totale o parziale con qualsiasi mezzo sono riservati per tutti i Paesi. Il catalogo completo è disponibile su [www.maggioli.it](http://www.maggioli.it) area università

Graphic Design by arch. Ester Dedé

Photos by Ahmed Amin Elgharib and Chiara Bertoli

Finito di stampare nel mese di agosto 2017

nello stabilimento Maggioli S.p.A.

Santarcangelo di Romagna (RN)

**OC - Open City**  
**INTERNATIONAL**  
**SUMMER SCHOOL**

Piacenza 2016

*from ecological landscape  
to architectural design*

**LANDSCAPE IN MOTION**

## INDEX

<b>Introductory note</b> <i>Paola Bracchi</i>	13
<b>PREFACE</b>	
<b>Politecnico Piacenza Campus, International Summer School and ASA - Advanced School of Architecture</b> <i>Guya Bertelli</i>	14
<b>BACKGROUND   THE THEME AND THE CONTEXT</b>	
<b>Landscape in motion</b> <i>Guya Bertelli</i>	25
<b>Society in Motion, Landscape of Strips</b> <i>Carlos García Vázquez</i>	29
<b>Nature and City: Abandoned Sites as New Sharing Spaces</b> <i>Sara Protasoni</i>	33
<b>Back to the Po</b> <i>Victor Tenez Ybern</i>	41
<b>PIACENZA DIARY</b>	
<b>Lecturers Biography International Juries</b> <i>Fausta Occhipinti</i>	44
<b>TOPICS AND PROJECT AREAS</b>	
<b>Po River: place of border, emblem of contrast, space of an unavoidable regeneration</b> <i>Michele Roda</i>	75
<b>Strategic and thematic areas   Space-sequence strategies for design</b> <i>Guya Bertelli</i>	81
<b>Strategic and thematic areas   Functional Program</b> <i>Paola Bracchi, Pasquale Mei, Michele Roda; Graphic elaborations by Francesca Canali</i>	90
<b>SECTION 1   OC OPEN CITY INTERNATIONAL SUMMER SCHOOL</b>	
<b>Atelier 1   LAND TROUVÉ</b>	118
<b>The silent surface. Theoretical for a level-land scenario</b> <i>Massimo Galluzzi</i>	120
<b>The shape of water</b> <i>Luciana Macaluso</i>	132
Project introduction by <i>Luciana Macaluso</i>	140
Trebbia Scape – text by <i>Federico Bressanelli</i>	146
Maggi Island Scape – text by <i>Cristiana Penna</i>	150
Industrial Scape – text by <i>Andrea Bosio</i>	154

<b>Atelier 2   I.M. Into Mutation</b>	158
<b>I_M Into Mutation</b>	160
<i>Francesca Schepis, Mario Morrica, Daniele Rocchio</i>	
Project introduction by <i>Martha Magrini Sissa</i>	174
Trebbia Scape – text by <i>Ahmed Amin Elgharib</i>	182
Agricultural Scape – text by <i>Giuseppe Pedrini</i>	188
Industrial Scape – text by <i>Francesca Canali</i>	194
<b>Atelier 3   INCREMENTAL CITY</b>	200
<b>The incremental city</b>	202
<i>Dario Giordanelli, Blagoja Bajkovski, Debora Magri</i>	
Project introduction by <i>Francesca Coppolino, Francesca Peltrera</i>	216
Trebbia Scape – text by <i>Gianluca Marin</i>	224
Farnese Scape – text by <i>Francesca Peltrera</i>	230
Industrial Scape – text by <i>Francesca Coppolino</i>	236
<b>SECTION 2   ASA - ADVANCED SCHOOL OF ARCHITECTURE</b>	
<b>What is ASA - Advanced School of Architecture</b>	244
<i>Michele Roda</i>	
<b>ISSUES</b>	
<b>[SOAK] Designing landscapes in motion</b>	249
<i>Marina Tornatora</i>	
<b>Public space: a lowering society in a Landscape in motion</b>	255
<i>Gaia Redaelli</i>	
<b>Water landscape: design the mutable form of the river</b>	267
<i>Chiara Bertoli</i>	
<b>Urban Edge. Around the unstable border of the city</b>	279
<i>Chiara Locardi</i>	
<b>The role of open space in river urban areas for the process-oriented design of the city landscape</b>	289
<i>Felice De Silva</i>	
<b>PROJECTS - ASA</b>	
<b>Beyond catastrophe</b>	
Introduction by <i>Matteo Poli</i>	304
River in emotion: Sign of Water – text by <i>Doaa Salaheldin Ismail Elsayed</i>	310
Agricultural Path: Section of Memory – text by <i>Nicola Cabras</i>	314
Urban rooms: Flowing People – text by <i>Felice De Silva</i>	318
<b>Landscape and Exhibition a space in motion</b>	322
<i>Roy Nash</i>	
<b>Piacenza Prize 2016</b>	334
<b>Press Review</b>	340
<b>Bibliography</b>	342

**Direction:**

Guya Bertelli, Politecnico di Milano, School of Architettura, Urbanistica, Ingegneria delle costruzioni AUIIC  
Carlos García Vázquez, Escuela Técnica Superior de Arquitectura de Sevilla (ETSAS)  
Sara Protasoni, Politecnico di Milano, School of Architettura, Urbanistica, Ingegneria delle costruzioni AUIIC  
Victor Ténez Ybern, Escuela Técnica Superior de Arquitectura de Barcelona (ETSAB)

**Promoters:**

Politecnico di Milano – School of Architecture Urban Planning and Construction Engineering – DASTU Department of Architecture and Urban Studies, Polo Territoriale di Piacenza, Polipiacenza

**Patronages:**

Ordine degli Architetti e PPC della Provincia di Piacenza, Municipality of Piacenza, Emilia Romagna Region, Piacenza Provincial Government, Confindustria Piacenza, Coldiretti Piacenza, Camera di Commercio di Piacenza, Banca di Piacenza

**International Schools partnership:**

Escuela Técnica Superior de Arquitectura de Sevilla (ETSAS - Spain),  
Escuela Técnica Superior de Arquitectura de Barcelona (ETSAB - Spain)

**Italian Schools partnership:**

Università degli Studi Mediterranea di Reggio Calabria  
Università degli Studi Federico Secondo di Napoli

**Media Partner:**

Il Giornale dell'Architettura, Edilizia Piacentina

**Sponsorship:**

Fondazione Cariplo

**Coordination OC Open City:**

Paola Bracchi  
Pasquale Mei  
Michele Roda

**Coordination ASA Piacenza:**

Matteo Poli  
Gaia Redaelli  
Marina Tornatora

**Organization:**

Iliara La Corte  
Francesca Canali

**Head of the thematic sections of the OC - Open City:**

Bajkovski Blagoja, Massimo Galluzzi, Dario Giordanelli, Luciana Macaluso, Mario Morrica, Giuseppe Pedrini, Daniele Rocchio, Ruben Rubio, Francesca Schepis

**Tutors:**

Matteo Bandiera, Andrea Bosio, Federico Bressanelli, Francesca Canali, Ahmed Amin Elgharib, Iliara La Corte, Gianluca Marin, Marta Magrini Sissa, Paniz Mohammadalimaddi, Valentina Palco, Francesca Peltrera, Cristiana Penna, Alessandro Tessari

**Head of the ASA section:**

Matteo Poli, Gaia Redaelli, Marina Tornatora

**Tutors:**

Chiara Bertoli, Nicola Cabras, Felice Da Silva, Chiara Locardi, Roy Nash, Doaa Salaheldin



FLUVIAL ENVIRONMENT

## STRATEGIC AND THEMATIC AREAS Functional Program

*Paola Bracchi, Pasquale Mei, Michele Roda*  
*graphic elaborations by Francesca Canali*

A

B

C



AGRICULTURAL ENVIRONMENT

### Fluvial ENVIRONMENT

STRIP A  
River basin

- 1 Po river
- 2 Overflow areas

### Agricultural ENVIRONMENT

STRIP B  
Agricultural suspension

- 3 agricultural fields
- 4 between infrastructures

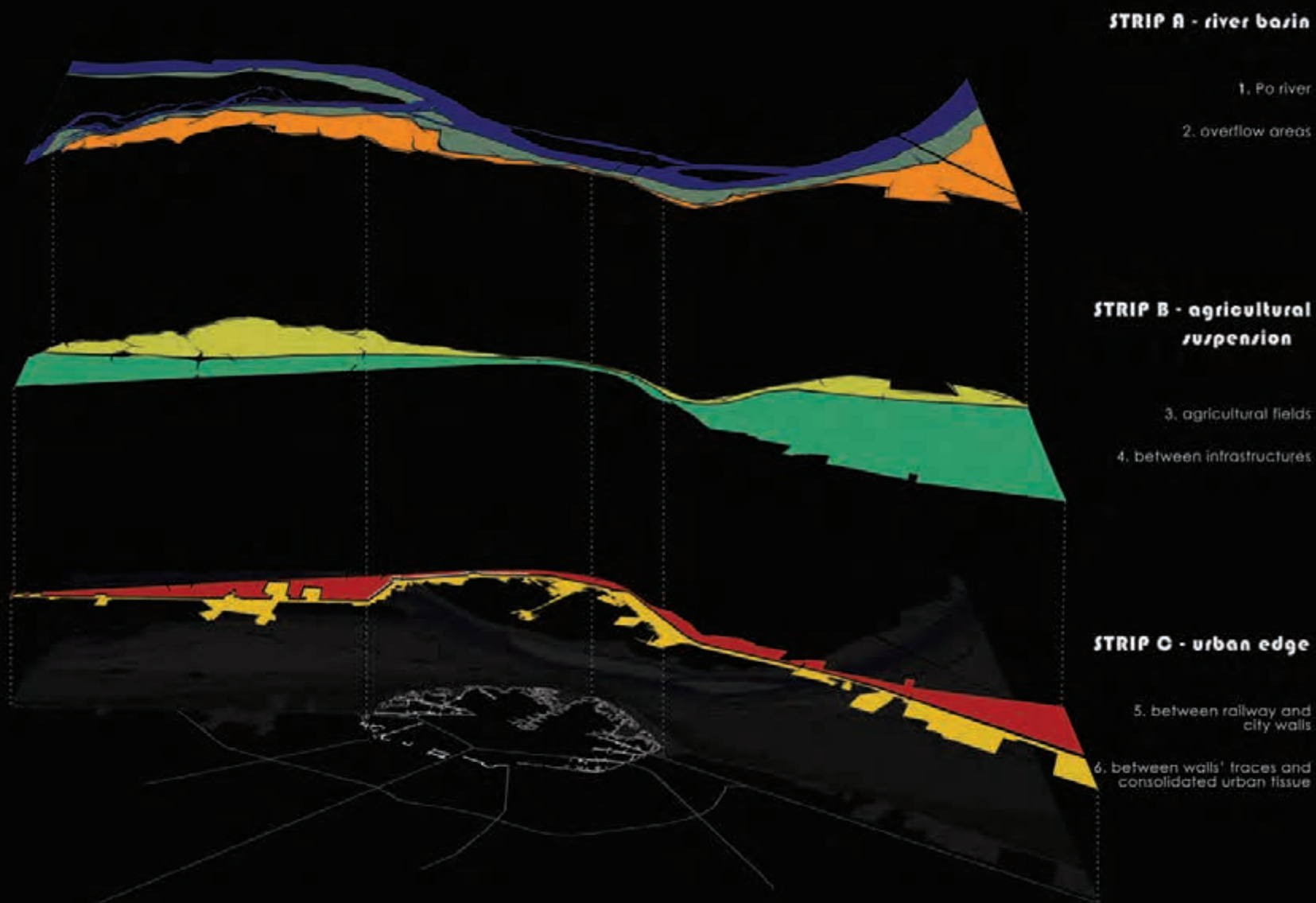
### Urban ENVIRONMENT

STRIP C  
Urban edge

- 5 between railway and city walls
- 6 between walls traces and consolidated urban tissue



URBAN ENVIRONMENT







FLUVIAL ENVIRONMENT

STRIP A  
Fluvial environment



AGRICULTURAL ENVIRONMENT

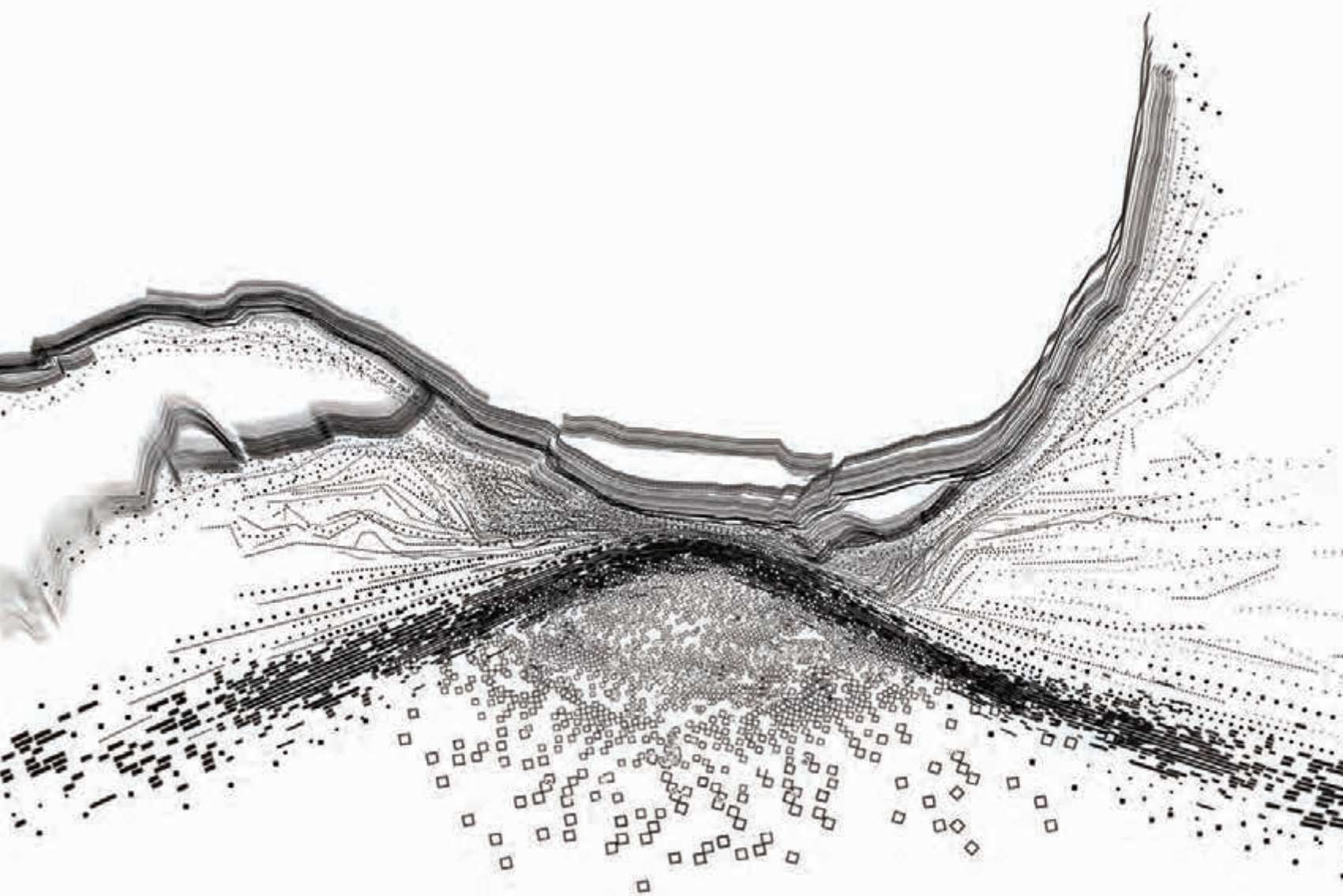
STRIP B  
Agricultural environment



URBAN ENVIRONMENT

STRIP C  
Urban environment





# PROJECTS

Strategic and thematic areas | Functional Program



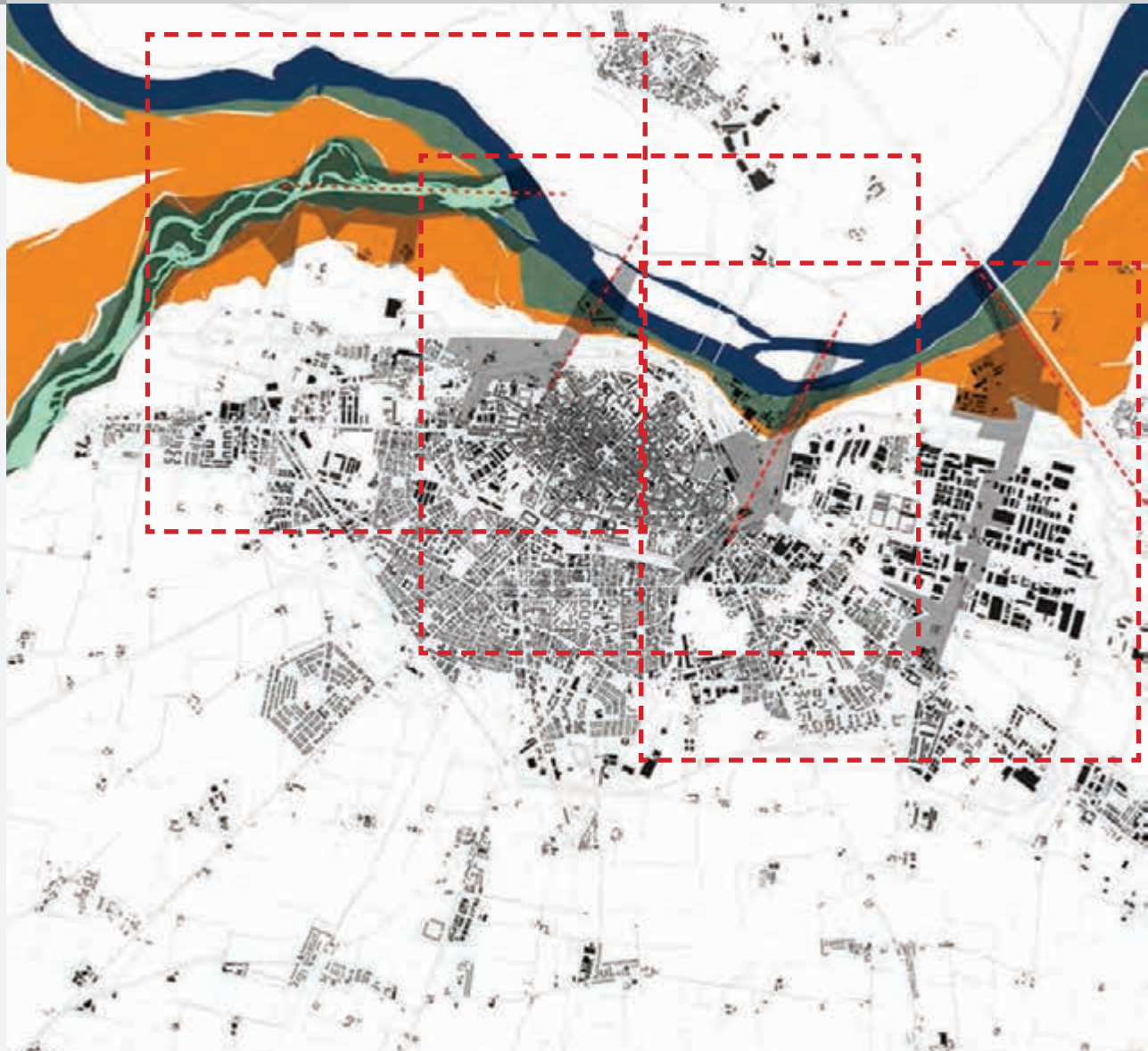
FLUVIAL ENVIRONMENT



AGRICULTURAL ENVIRONMENT



URBAN ENVIRONMENT



## STRIP A

### Global Scale

Main task at this scale it's to focus transforming-process of the River Embankments, able to set the irregular main-stream of waters reaching as main goal a Fluvial Park for leisure activity. An area available to improve the quality of city's life. The renewal of slow-mobility network adding bike-sharing stations along the path-ways should be assumed as basic in strategy.

### Intermediate Scale

Performed by three main environment:

- The first, named as "section A", corresponds to the main river-bed of Trebbia River Mouth in Pò River prolonged until the "Genio Pontieri-Scalo Po" barrack.
- The second, (known as "Section B and Section C"), it's the rivershore from "Genio Pontieri-Scalo Po" barrack until the "Rifiuto" canal.
- The Third, ("Section C and Section D"), starts from "Rifiuto creek" Mounth reaching the A1 Motorway bridge.

**The strategy** it's based to set fluvial in-between spaces to link riverside and its landscape, but at the same time setting them flexibly to environmental variables.

The band – so-called strip, is crossed by a very easy recognizable element as the river-bank is. An embankment which is also a ridge to mark different interactive geographic-regions. Currently this element is also a slow-mobility path-way running east-west. Main task, specific for this infrastructure, it's to establish the relationship between city and river-shore because 9 topic-places.

This system could be provided by Ecological-Corridors and alongside the river with exchanging-hub performed by docks and basins



# PROJECTS

Strategic and thematic areas | Functional Program



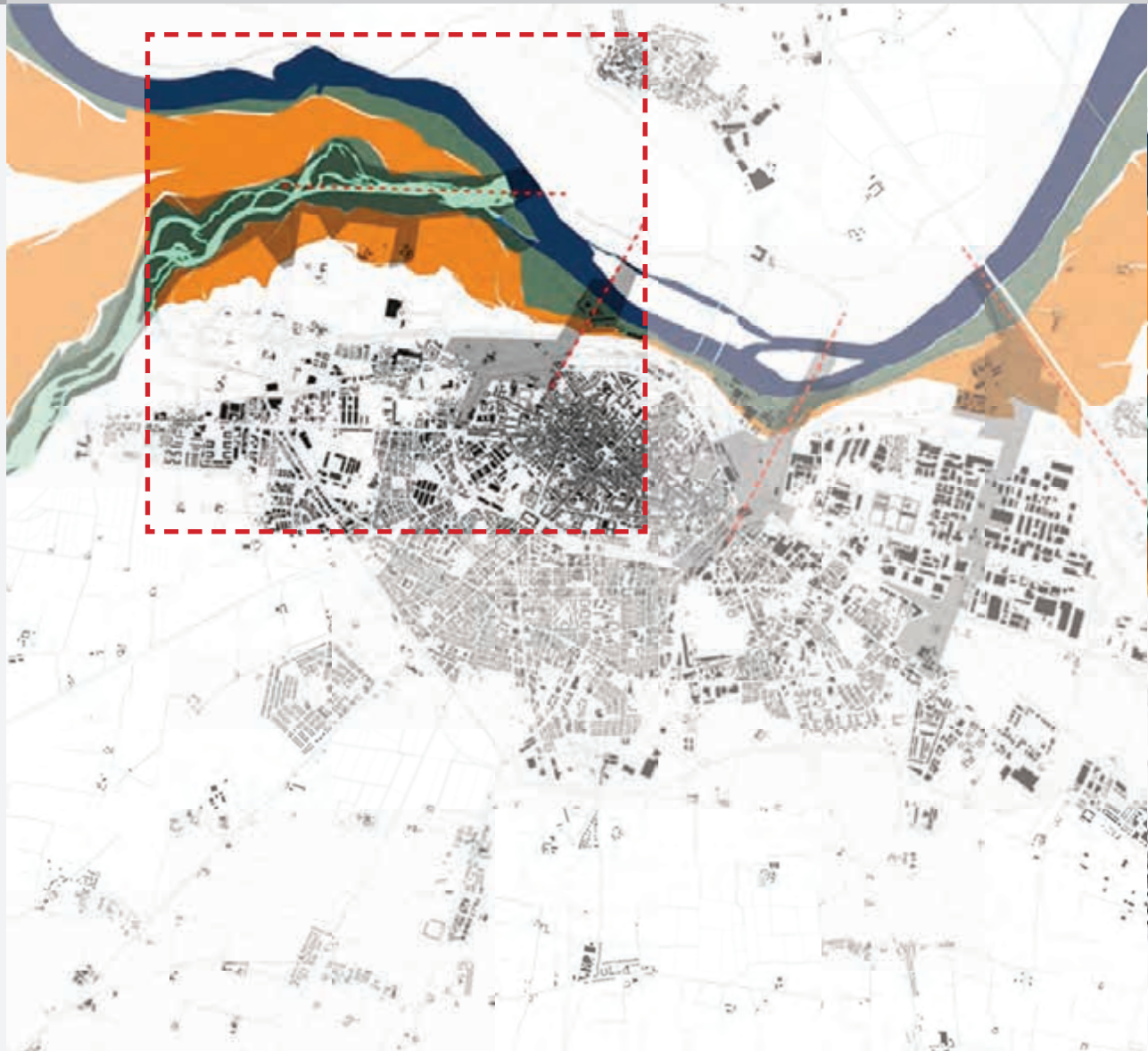
FLUVIAL ENVIRONMENT

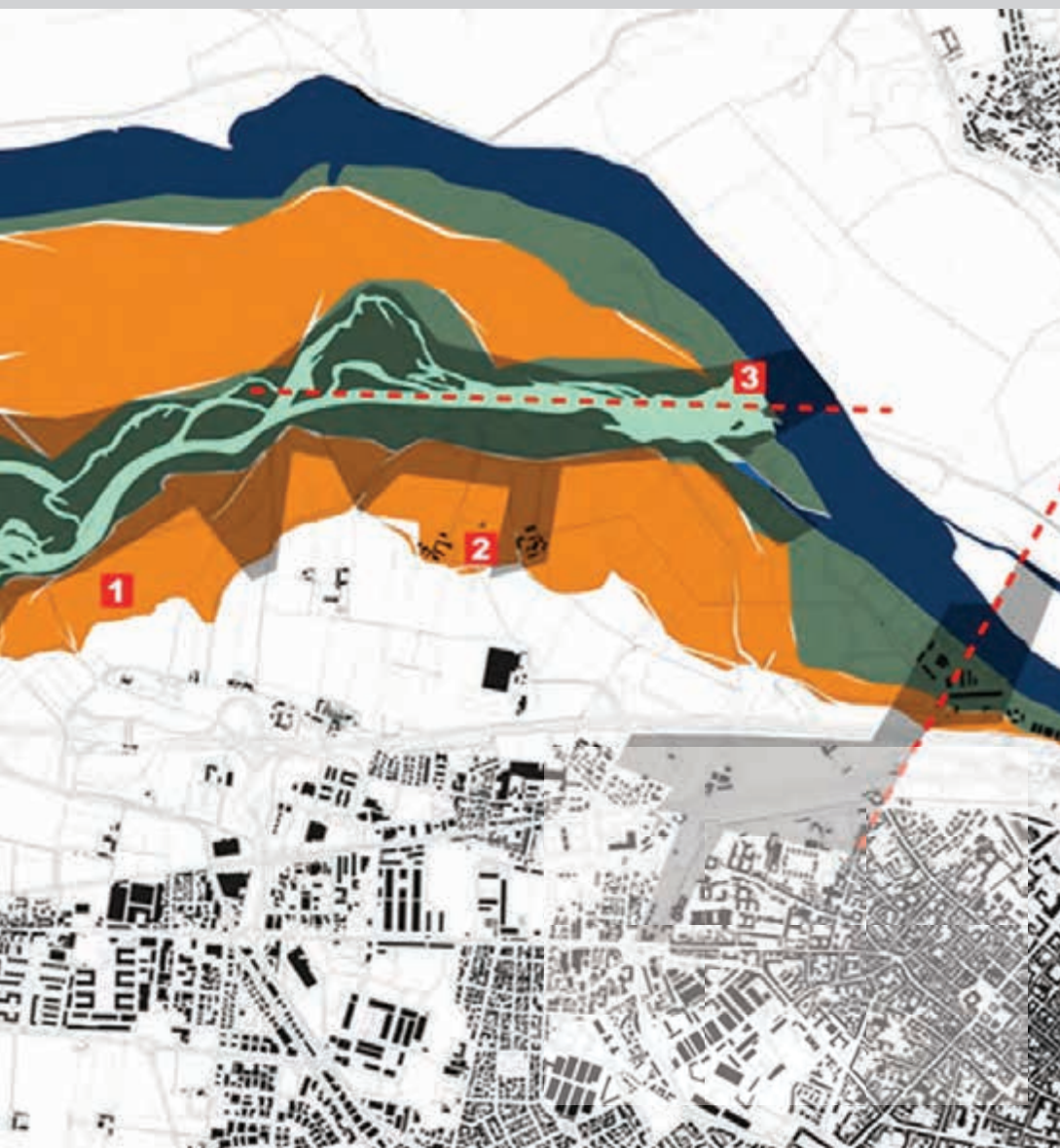


AGRICULTURAL ENVIRONMENT



URBAN ENVIRONMENT





## MAIN FOCUS LINKED TO SPECIFIC CASE-STUDIES

1- Definition of a sustainable river park with a system of constructed wetland, oriented both to water-cleaning and usage of natural resources;

2- Regeneration and reuse of the rural farm-house for temporary residential to develop agricultural tourism;

3 - Construction of a system of landscape observation through the realization of an archipelago of artificial land, enclosure, docks, floating gardens and a temporary system of crossings to build connections trough-out Pò river-sides.

Caserna Genio Pontieri  
Scalo Pò

1



Open spaces between the bridge and  
Canottieri Nino Bixio Club

2



Round industrial tanks  
and Rifuto streams

3



# PROJECTS

Strategic and thematic areas | Functional Program



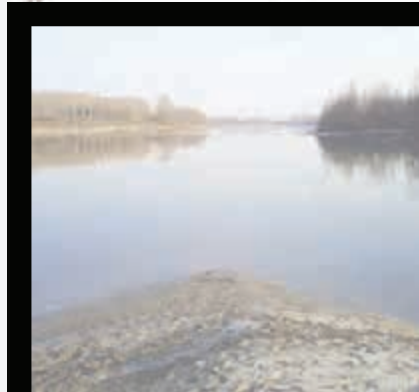
FLUVIAL ENVIRONMENT



AGRICULTURAL ENVIRONMENT



URBAN ENVIRONMENT



## MAIN FOCUS LINKED TO SPECIFIC CASE-STUDIES

4 - Reuse of "Genio Pontieri" barrack as a "Museum of Water". An interactive museum based also on renewable energies, and finally a mooring system for boat or a connection with Maggi island.

5 - Balancing the different functions and land-usage surrounding bridges. Building a new river-front protected from floods with mixed uses: mainly economic and touristic (urban beach, shops, restaurants and bars) having sports facilities in-between.

6 - Reuse of the industrial traces as wellness center services such as meeting rooms, spa, balneo-therapy, indoor pool and sports packages. Design of a touristic harbour with a basin. Redrawing open spaces including the dike system.



Caserma Genio Pontieri  
Scalo Pò

4



Open spaces between the bridge and  
Canottieri Nino Bixio Club

5



Round industrial tanks  
and Rifuto streams

6





# PROJECTS

Strategic and thematic areas | Functional Program



FLUVIAL ENVIRONMENT



AGRICULTURAL ENVIRONMENT



URBAN ENVIRONMENT



## MAIN FOCUS LINKED TO SPECIFIC CASE-STUDIES

7 - Building a new commercial harbor on former docks with facilities.

8 - Requalification of the canal banks and construction of mooring for fishing activities. Landscape mitigation system around the Motorway and a system of landscape equipment to allow visual perception along the highway

8 - Requalification of the canal banks and construction of mooring for fishing activities. Landscape mitigation system around the Motorway and a system of landscape equipment to allow visual perception along the highway.



Sand mining area

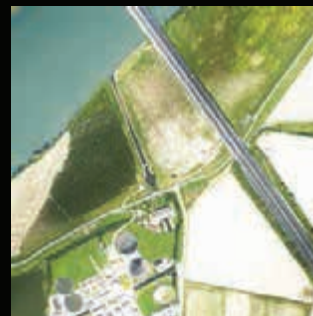
7

Floodway canal

8

didascalia da recuperare

9



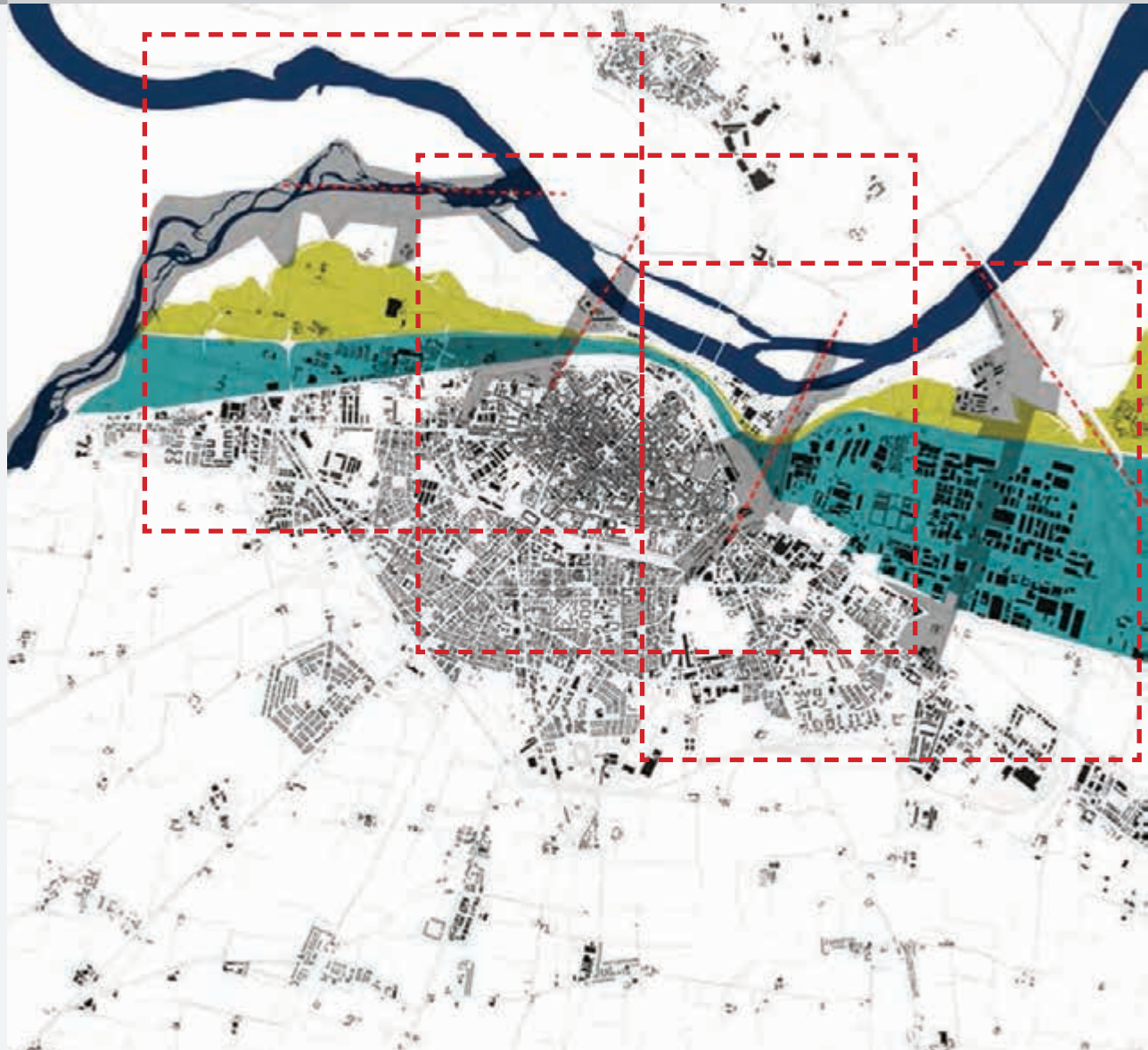
# PROJECTS

Strategic and thematic areas | Functional Program

A



FLUVIAL ENVIRONMENT



B



AGRICULTURAL ENVIRONMENT



C



URBAN ENVIRONMENT

## STRIP B

### Global Scale

Main target is to set an agricultural-Park, as an "intervall-garden" laid east-west involving the existing infrastructures. Task is also make those heavy-road infrastructures more permeable to agricultural zones thank by the recovery of fading-connection.

Main identity for this area is the vacant and abandoned areas turnable to an option for developing multiple connection to the city and the river.

An infrastructural-landscape could be available considering the crossing-thresholds as opportunities to transform existing-boundary as relationships between water and urban tissue.

**Intermediate Scale**, qualifies three main areas:

- The First, included in Section A and B, starts from "Fame" Canal (on Trebbia River) and the Shooting yard. An area placed between the motorway and the railway in the part in front of Borghetto Gate;
- The Second, (Section B and C), as infrastructural corridor moves from the Shooting yard close to Po" River and next to Section B, or Rifiuto Canal (Section C);
- The Third, (Section C and D), it"s the industrial-logistic areas "Le Mose" Compound including "Rifiuto" Canal and section D from Emila Route and the Motorway viaduct

**The strategy** looks to an "in-between space" giving meaning to agricultural-production areas and logistic or industrial compounds, laying-down a new landscape "in-between agriculture and productive" activities. Same to the previous Strip A, three topic-sites are recognized as potential designing-area locally.

This system could be provided by Ecological-Corridors and alongside the river with exchanging-hub performed by docks and basins



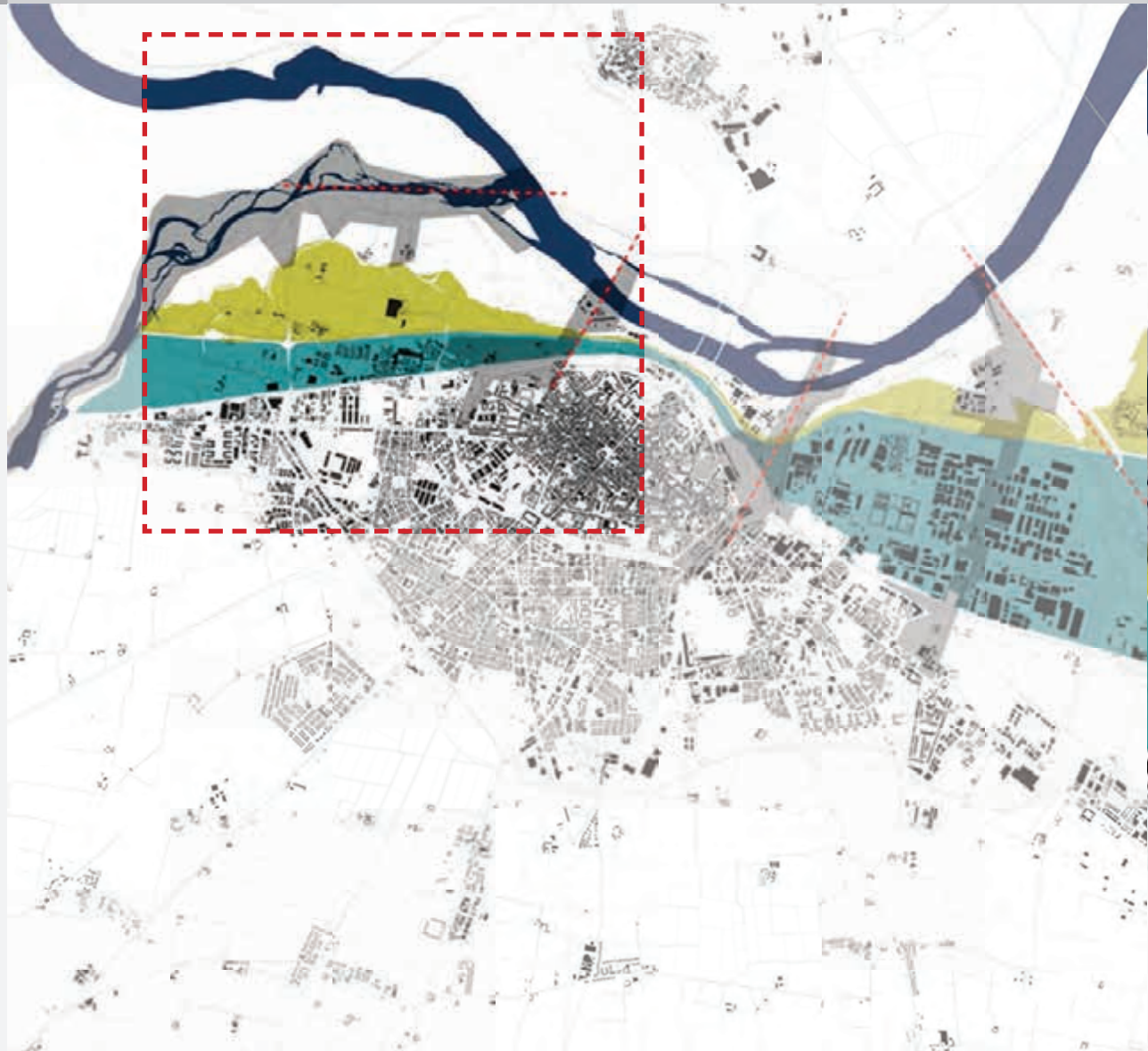
# PROJECTS

Strategic and thematic areas | Functional Program

A



FLUVIAL ENVIRONMENT



B



AGRICULTURAL ENVIRONMENT



C



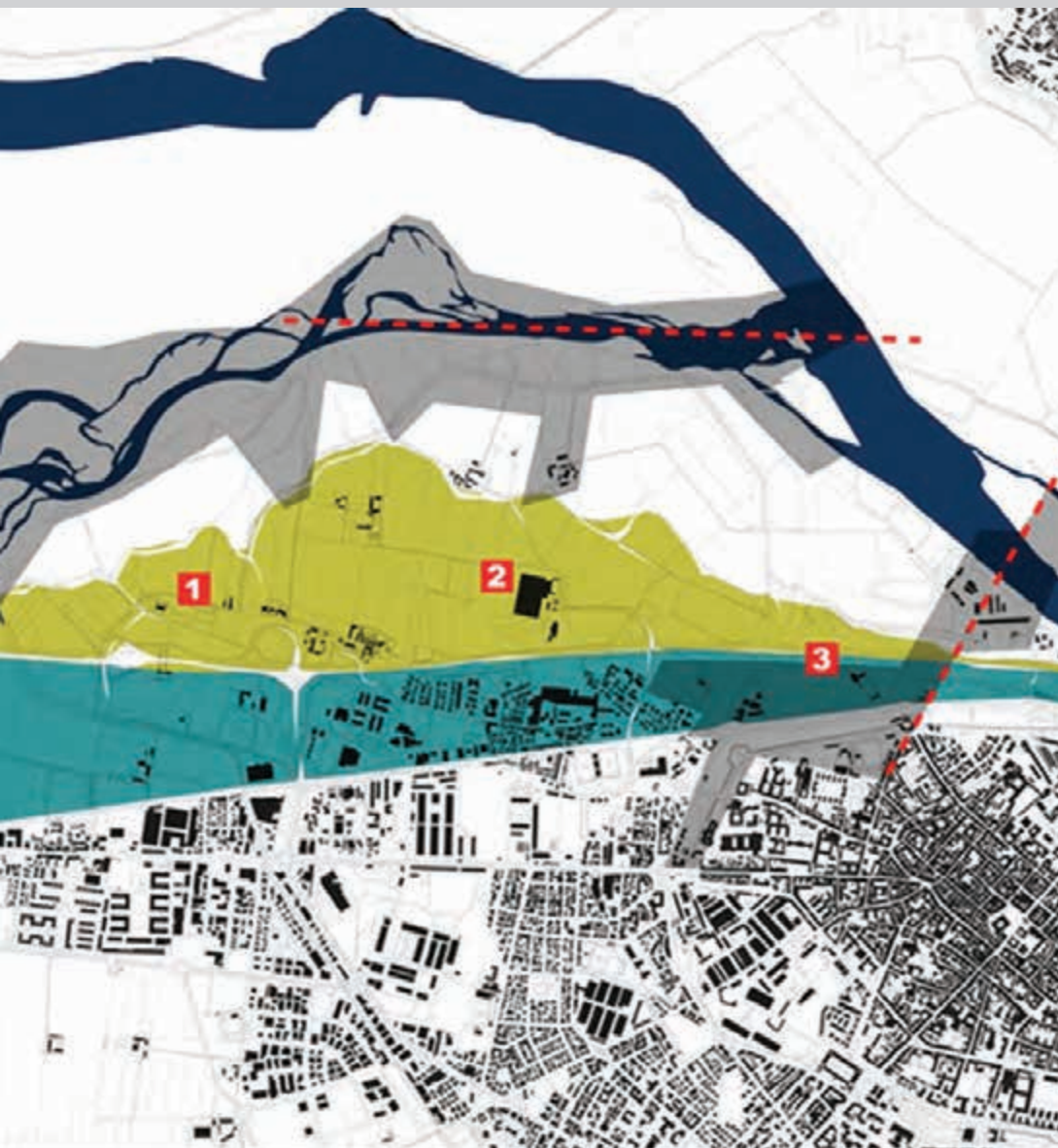
URBAN ENVIRONMENT

## MAIN FOCUS LINKED TO SPECIFIC CASE-STUDIES

1 - By an architectural and energetic point of view, regeneration of a small housing district already existent and composed by 1-2 storey-buildings, through sustainable actions. This approach, oriented to the enhancing relationship with the surrounding lands, could be the occasion to test an innovative integration housing-landscape.

2 - Rehabilitation of the large productive and logistic area in order to build an environmental and landscape structure (an experimental vegetable-garden with innovative production) that could become also topic of the river in the city area.

3 - Regeneration of the "Poligono di Tiro"/Shooting-yard area with a new landscape design, able to change it into a sequence of open spaces bypassing thresholds and borders of the city (railways and highway) and recover the identity and traces of the historical territorial-structures.



Abandoned routes

1



Deposit of construction material

2



didascalia da recuperare

3



# PROJECTS

Strategic and thematic areas | Functional Program

A



FLUVIAL ENVIRONMENT



B



AGRICULTURAL ENVIRONMENT



C



URBAN ENVIRONMENT

## MAIN FOCUS LINKED TO SPECIFIC CASE-STUDIES

4 - Re-balancing of the sector compressed by the infrastructures, to improve the quality of the sport-facilities (managed by Rowing-Club "Società Canottieri Vittorino da Feltre"), adopting a design capable to deal a new permeability joining collective uses and private properties.

5 - Looking for a new aesthetical dimension (in terms of natural elements and landscapes) for the area characterized by an amazing overlapping of infrastructures. The goal is to design a new gate crossed every day by strong flows of people, adopting environmental innovative solutions.

6 - Building an experimental eco-village in the large void area, shaped by infrastructures and Rifiuto Canal. An housing and tertiary district, connected with the city and the river, mainly oriented to apply sustainable architecture and technological solutions.



didascalia da recuperare

4



didascalia da recuperare

5



didascalia da recuperare

6





# PROJECTS

Strategic and thematic areas | Functional Program



A

FLUVIAL ENVIRONMENT



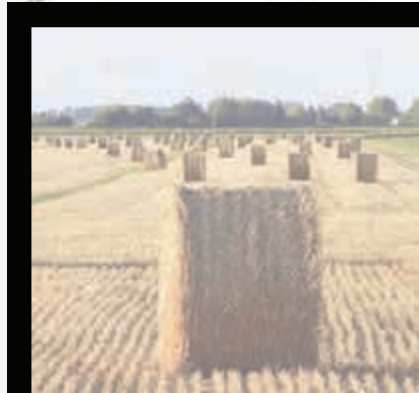
B

AGRICULTURAL ENVIRONMENT



C

URBAN ENVIRONMENT



## MAIN FOCUS LINKED TO SPECIFIC CASE-STUDIES

7 - Redefining the northern border of the logistic district through a landscape design, capable to integrate the functions with a strong aesthetical quality. Strong attention has to be devoted to connections (east-west, along the strip) and to punctual recovering of paths bypassing the highway.

8 - Integrating the existing logistic areas or infrastructure having shapes and elements (also natural ones) oriented to 2 main goals: the renewal of the traces of the neglected buildings and improving areas for collective uses to join the north-south direction towards the river strip.

9 - Design of the street's connections and limits (with an approach involving also buildings' facades) oriented to stress its own quality of a market-road. The project has to create a friendly environment for different flows of travelling-people with different means of transportation.



didascalia da recuperare

7



didascalia da recuperare

8



didascalia da recuperare

9



A



FLUVIAL ENVIRONMENT

B

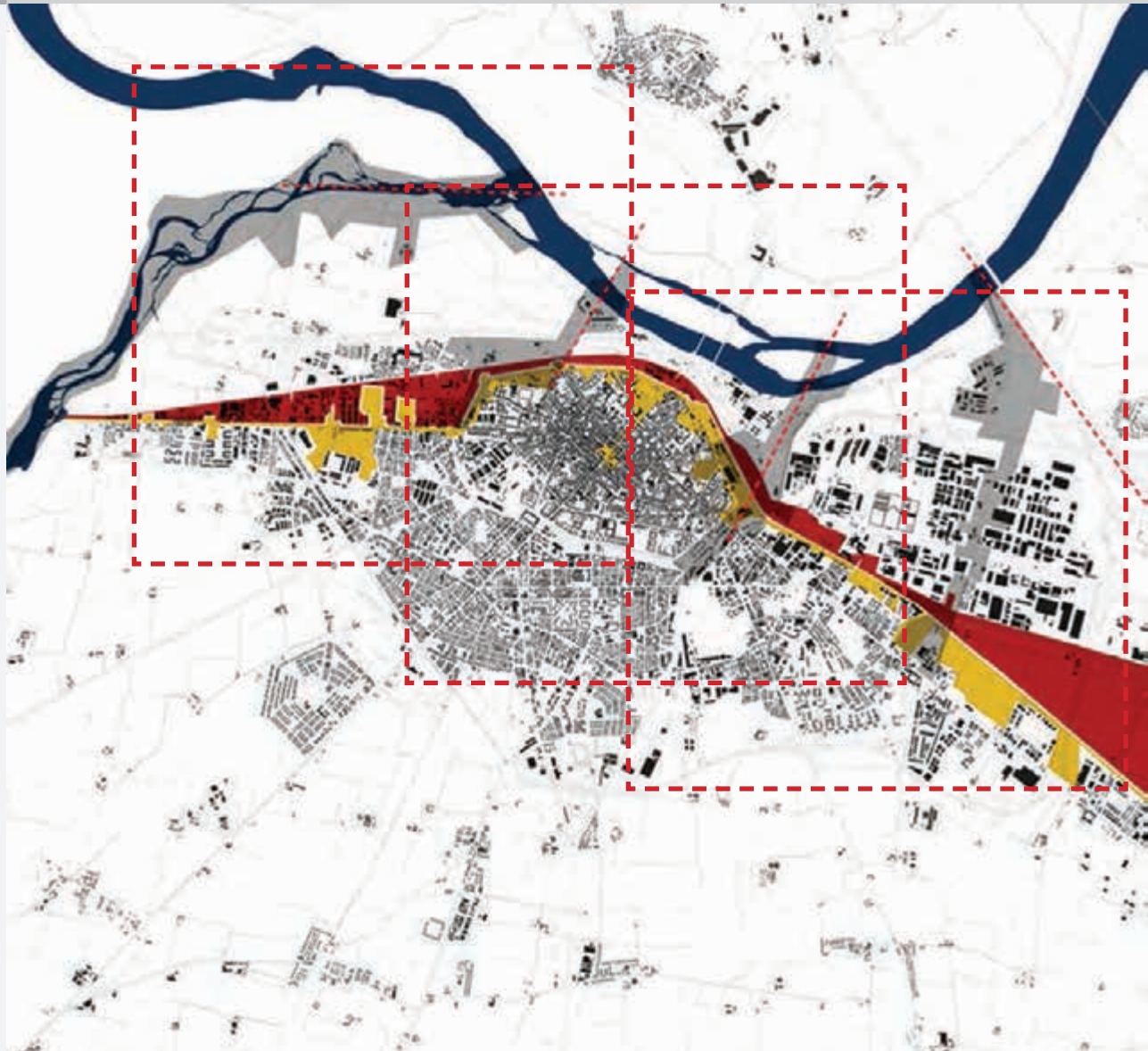


AGRICULTURAL ENVIRONMENT

C



URBAN ENVIRONMENT



## STRIP C

### Global Scale

Main target is to shape and qualify in use the north-side of the city, turning a road-traffic condition into a public-space made by a sequence of sites outmatching infrastructural barriers. Other priority target is treating the same places as connecting-areas involving pedestrian main fluxes and, at the same time establish a continuum between rural and fluvial bands.

**Intermediate Scale**, qualifies three main areas:

- The first, named as "section B", corresponds to the inner city-edge from western-quadrant to the rail-road until Borghetto Gate.
- The second, (known as "Section B and Section C"), runs from the City-Walls and Piazzale Roma.
- The Third, ("Section C and Section D"), as a urban-corridor from the Farnesian Tower (Walls defense system) until The Catholic University College along the Emilia-Parmense Route.

**The strategy** keeps the urban and architectural design main tools to fix punctual interventions able to sprawl positive effects onto a wide area involving public spaces and transportation areas.



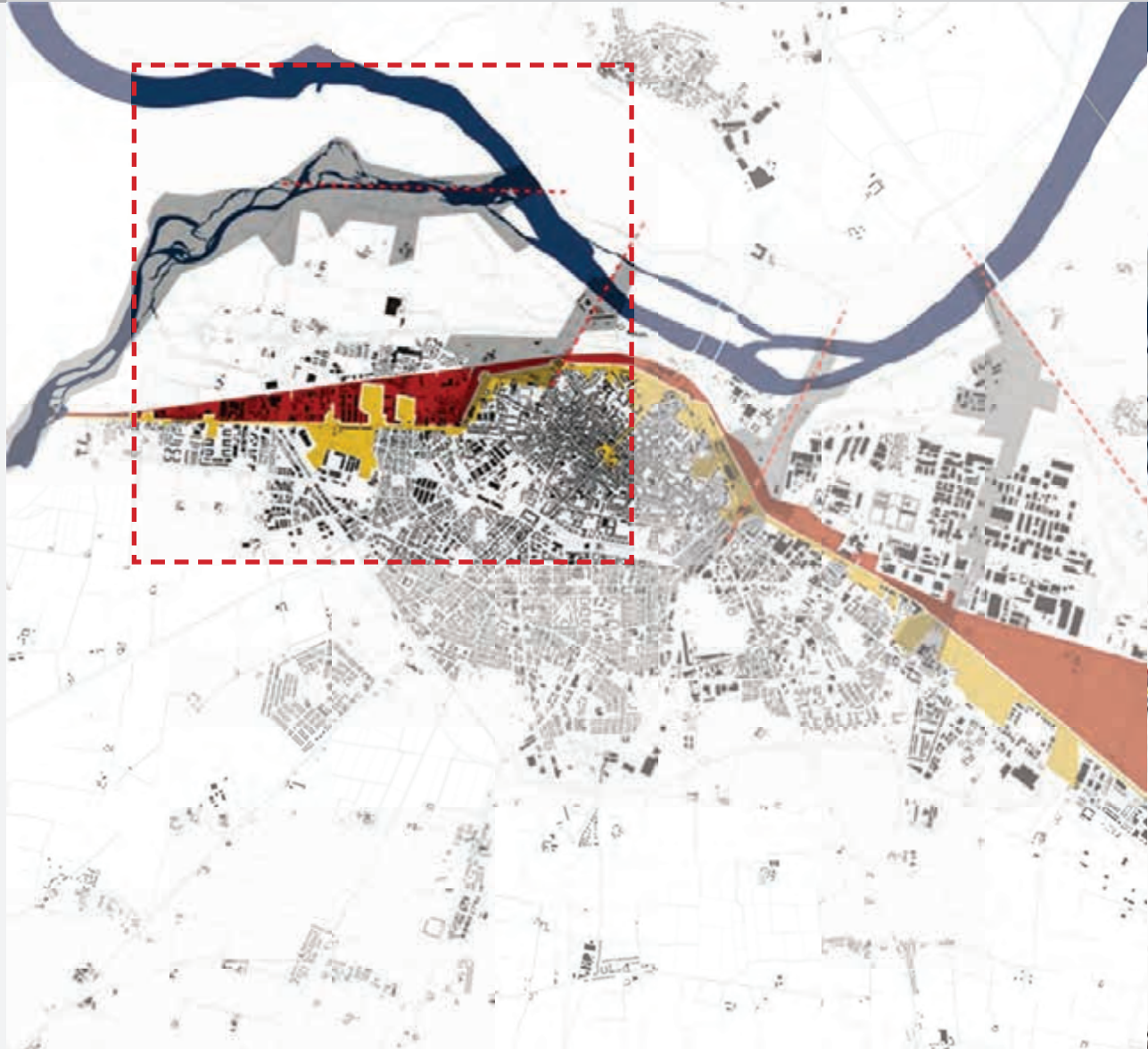
# PROJECTS

Strategic and thematic areas | Functional Program



A

FLUVIAL ENVIRONMENT



B

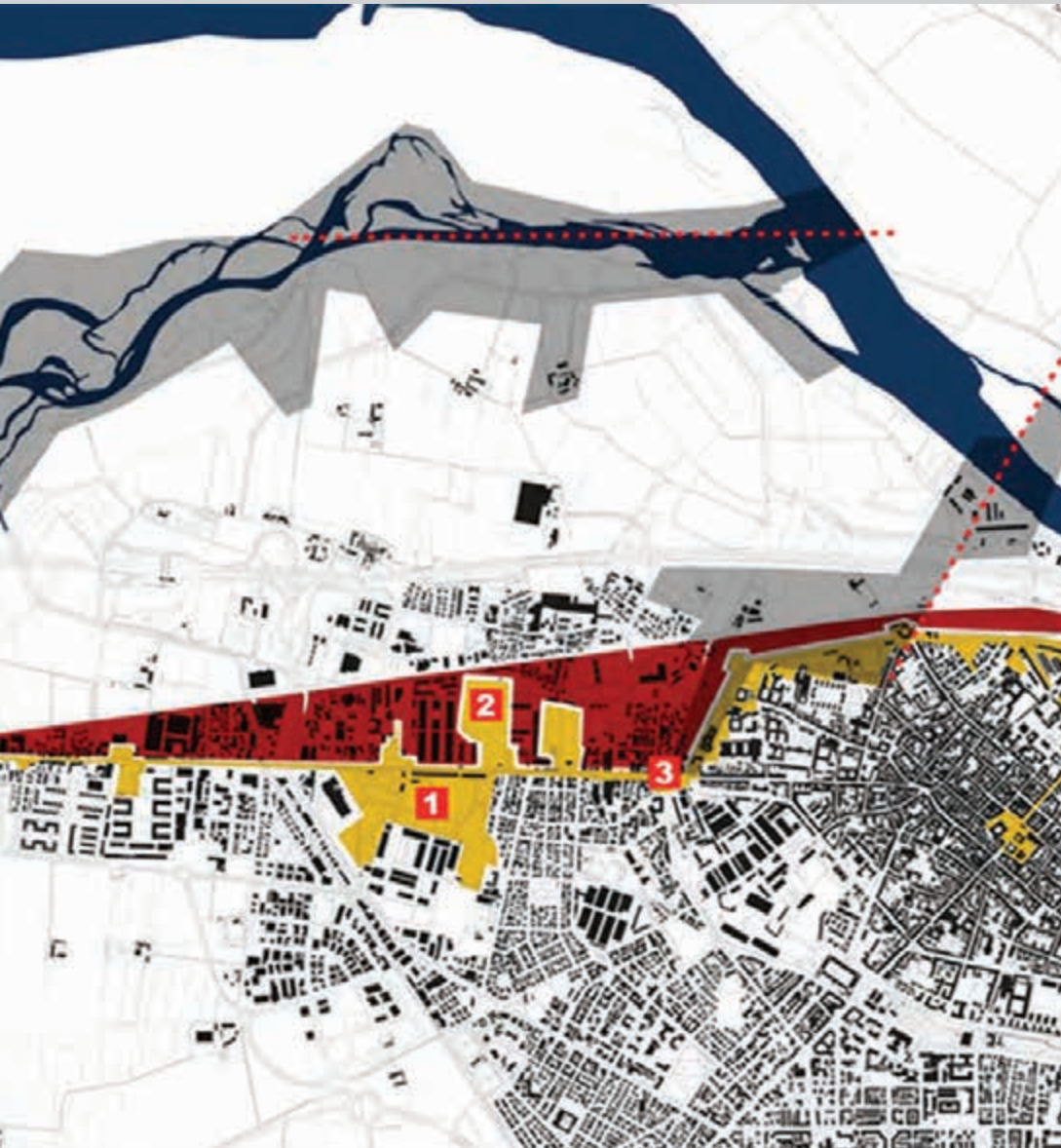
AGRICULTURAL ENVIRONMENT



C

URBAN ENVIRONMENT





## MAIN FOCUS LINKED TO SPECIFIC CASE-STUDIES

1. - Regeneration of ex The former military "Pertite" Area through a spatial reconfiguration of all the system of open spaces and buildings, oriented to the definition of a new educative pole (primary and secondary school) associated to sport facilities, library and laboratories and warehouses for hand-craft production.
2. - Renewal of the Parade-ground/"Piazza d'Armi", through a new system of Vegetable-gardens and Medical-plant Gardens. The intervention allows also the requalification of minor facilities buildings re-used as Winter-gardens or shelters.
3. - Redesigning of Piazzale Torino as new "gate-way" to the city; enclosing the existing public-space into a cover-market directly connected as an infrastructural-hub to slow and fast mobility.

didascalia da recuperare

1



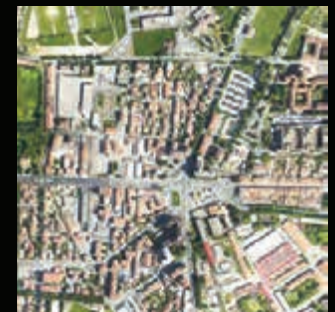
didascalia da recuperare

2



didascalia da recuperare

3



# PROJECTS

Strategic and thematic areas | Functional Program

A



FLUVIAL ENVIRONMENT

B

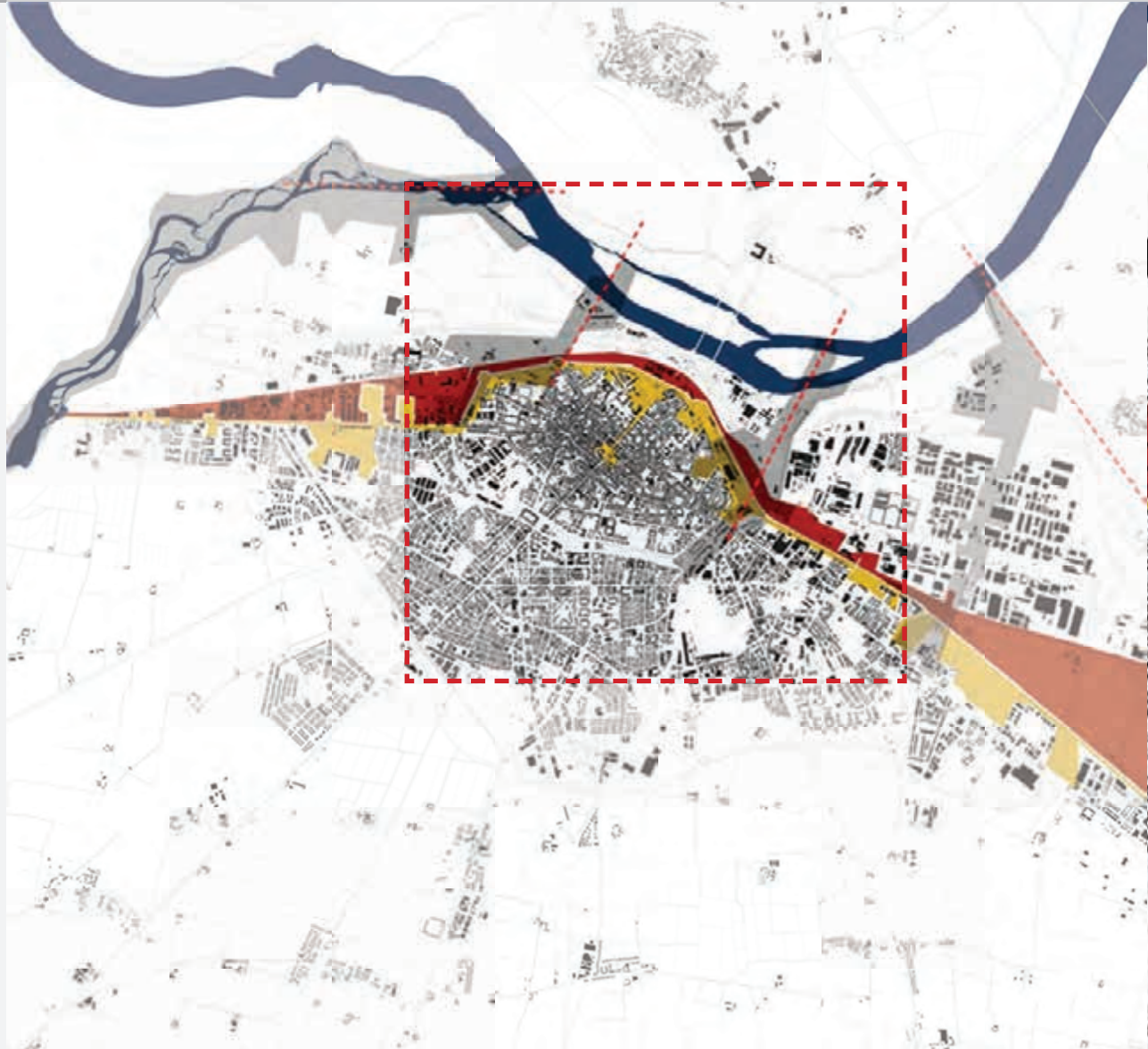


AGRICULTURAL ENVIRONMENT

C



URBAN ENVIRONMENT



## MAIN FOCUS LINKED TO SPECIFIC CASE-STUDIES

4. - Re-use of abandoned Borgetto Gate/"Porta Borghetto" to built an experimental multi-media center. The area includes spaces for exhibitions, workshops and temporary workshop for artists.

5. - Design of a "new space of mobility": an intermodal center between slow and fast mobility, capable to define an interchange-system between trains/bus/tram/cars/bikes.

Re-use of abandoned railway-tracks as a scientific park integrated by a new under-ground car-park lot.

6 - Re-use of the ex Locomotive deposit as a tram terminal: reactivation of rail-tracks to link the railway station both to the city center and the river.



didascalia da recuperare

4



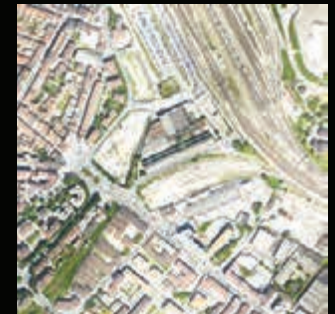
didascalia da recuperare

5



didascalia da recuperare

6





# PROJECTS

Strategic and thematic areas | Functional Program



A

FLUVIAL ENVIRONMENT



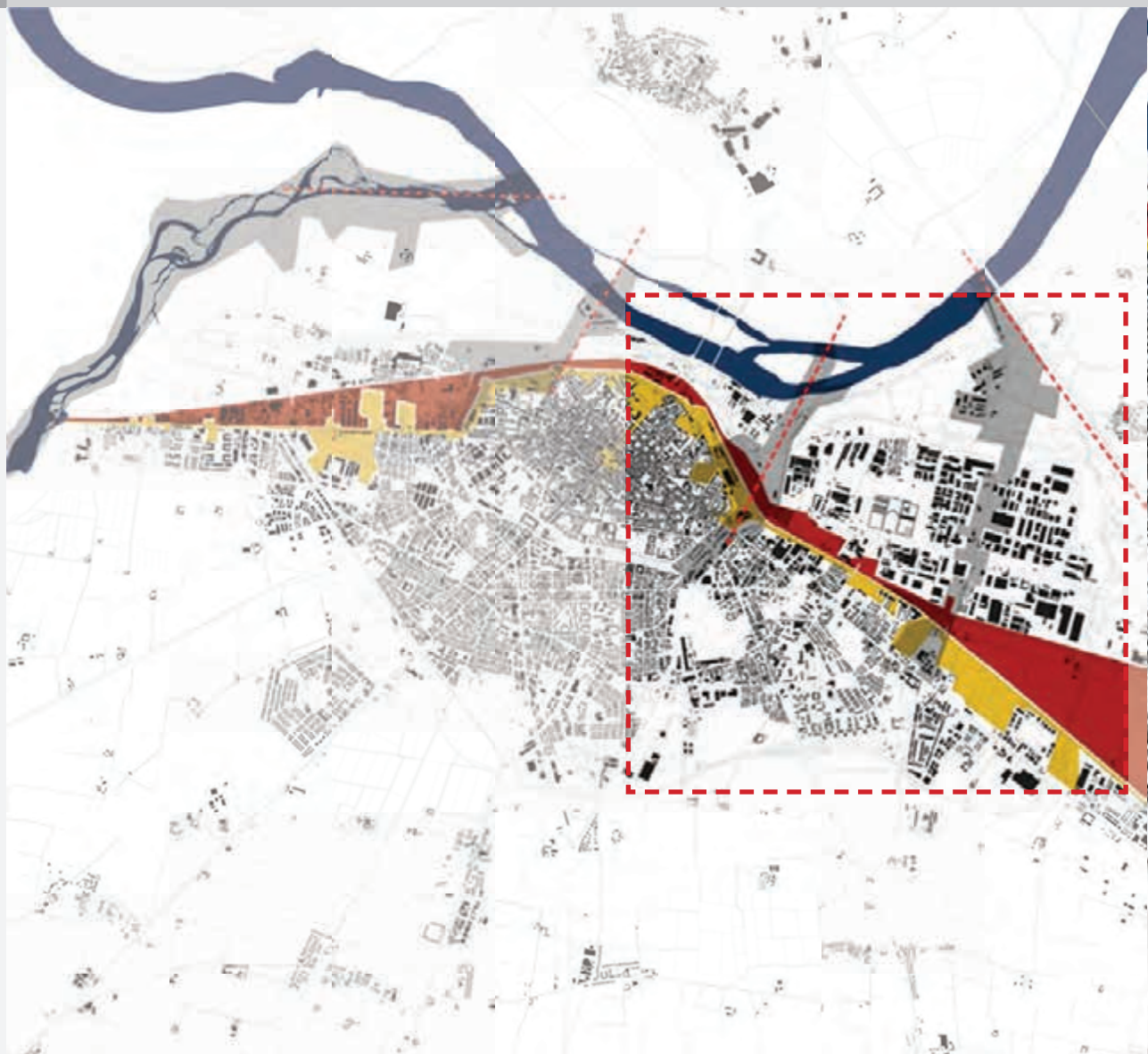
B

AGRICULTURAL ENVIRONMENT



C

URBAN ENVIRONMENT



## MAIN FOCUS LINKED TO SPECIFIC CASE-STUDIES

7. - Renewal of the buildings and open spaces of the Ex-Consorzio Agrario as a Urban Gourmet Market of Bio local products. The Market will includes spaces for sell, buy, eat and spaces for improve the knowledge and communication about the innovative forms of productions;

8 - Transformation of the bridge, only for car, in a complex system of open public spaces for pedestrians an bicyclers, composing a threshold between the different conditions of the context;

9-Renewal of an abandoned farmstead in a center of transformation and selling of the agricultural products of 0,0 Km



didascalia da recuperare

7



didascalia da recuperare

8



didascalia da recuperare

9

