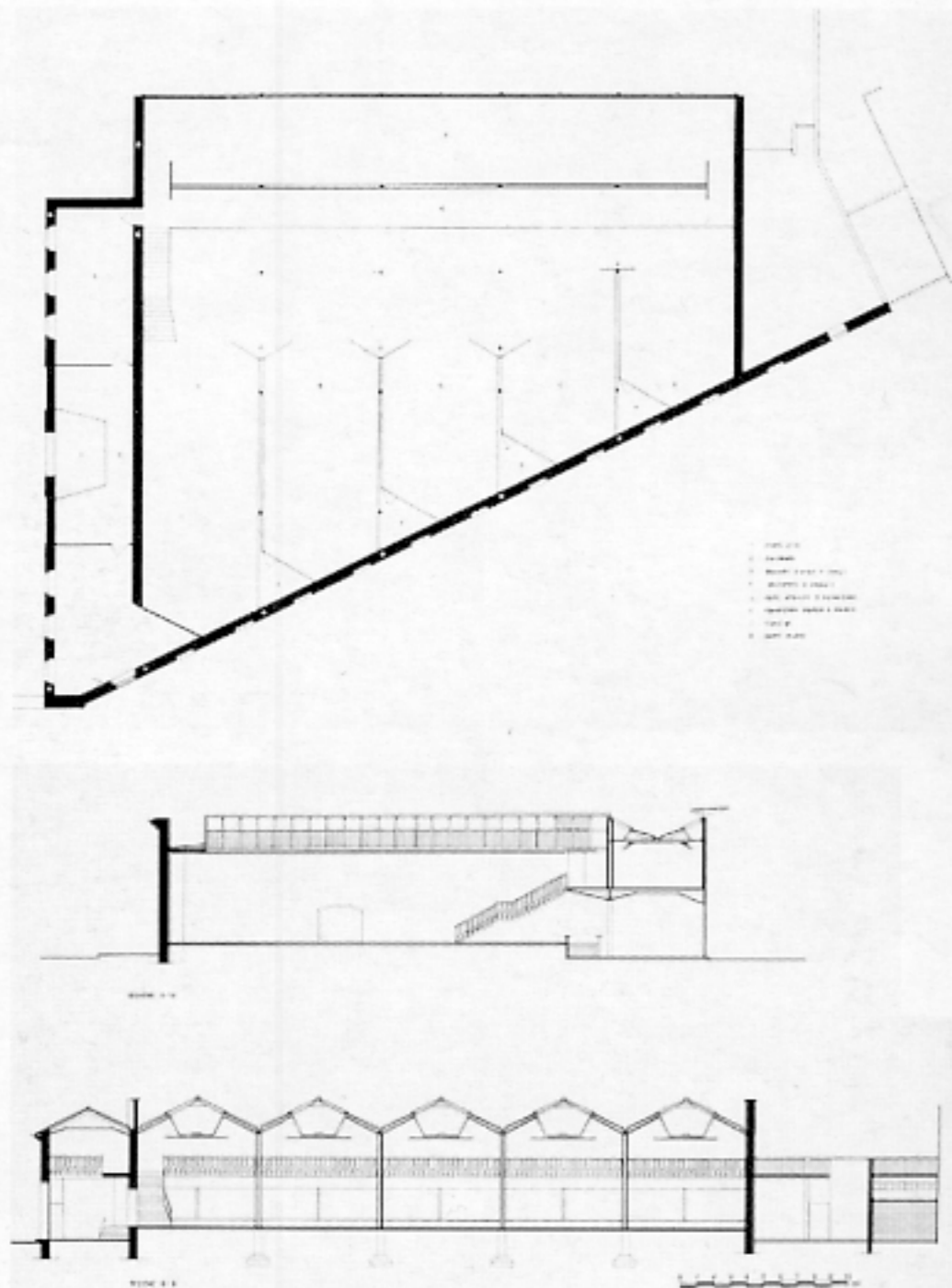
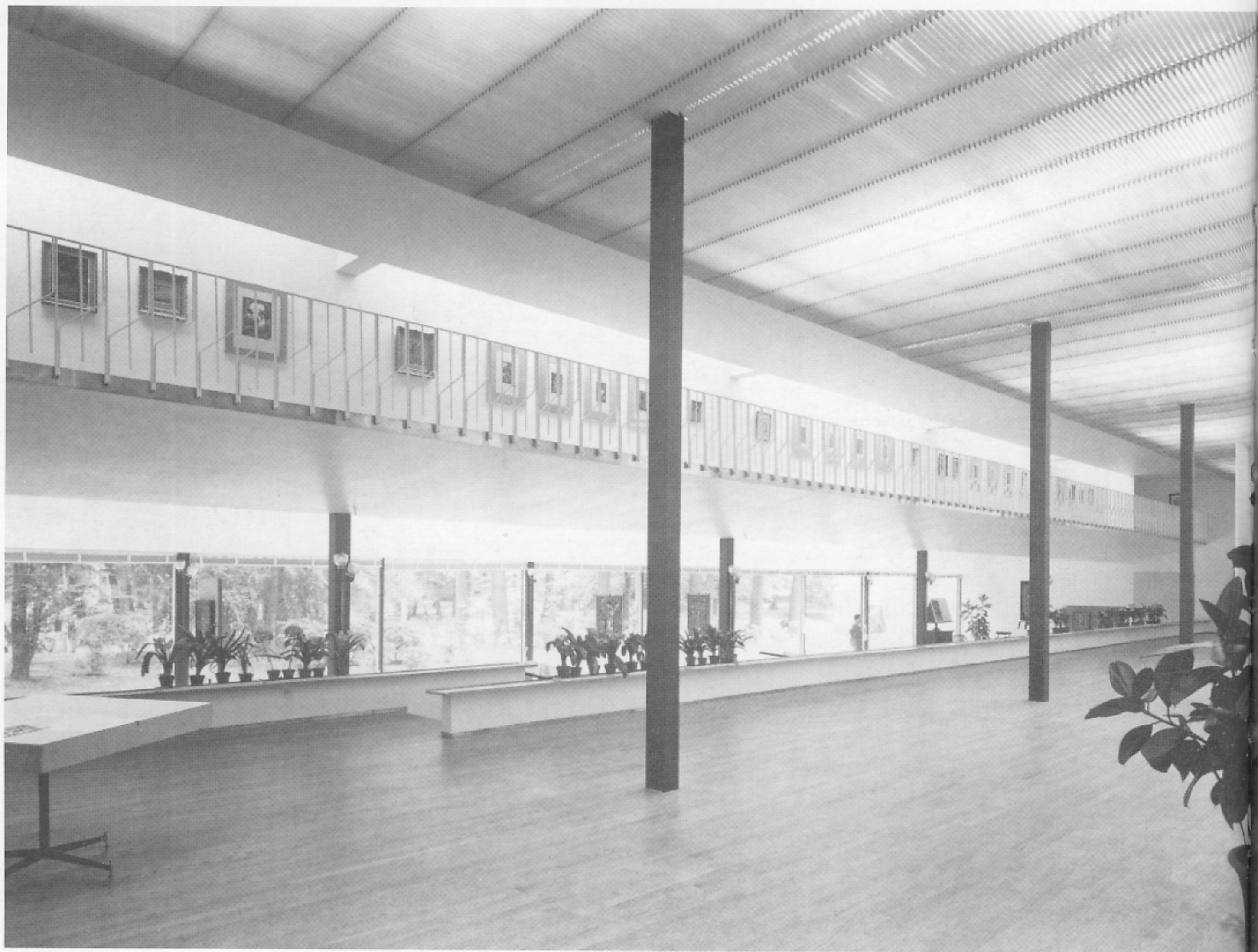


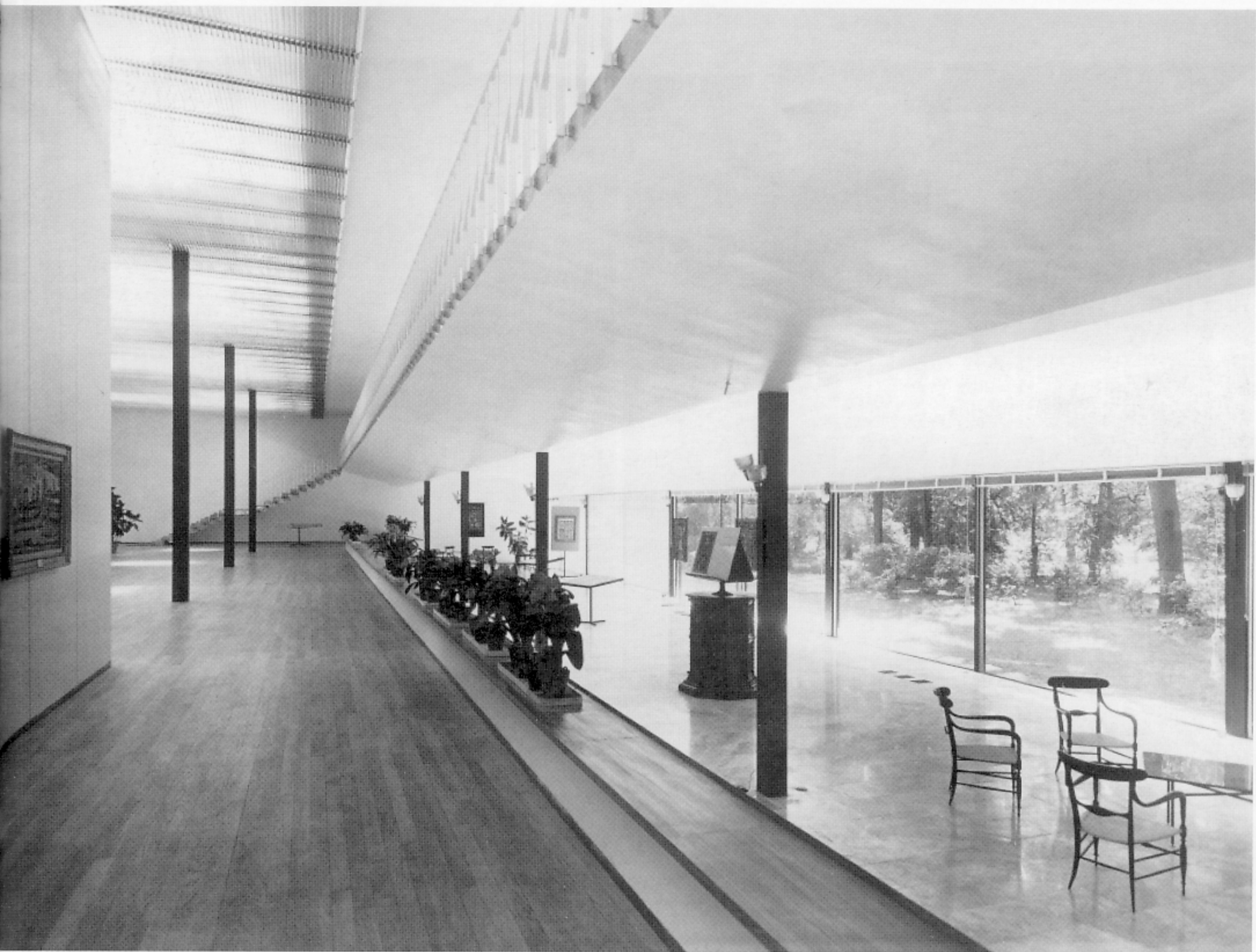
Tav. VIII - Milano, Progetto di Torre in piazza del
Duomo (1934): veduta prospettica e modello.



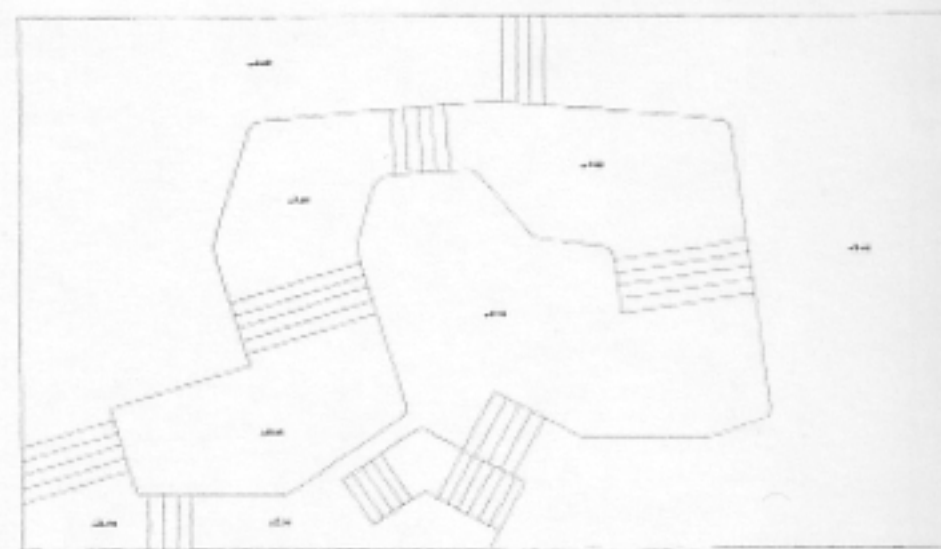
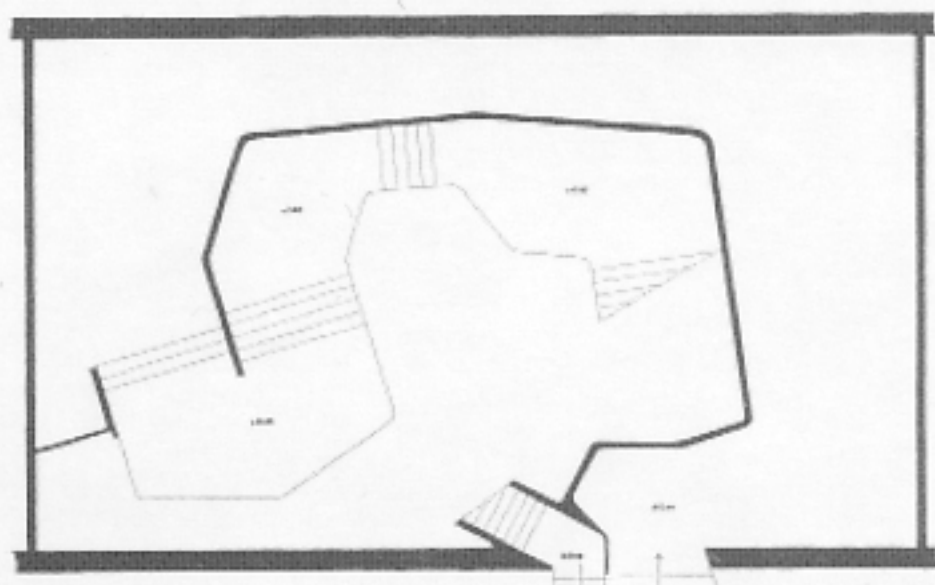
Tav. XVIII – Milano, PAC, Padiglione d'Arte Contemporanea (1947-53): prospettiva del fronte sud, pianta del piano terreno, sezione trasversale e sezione longitudinale, fronte a sud.



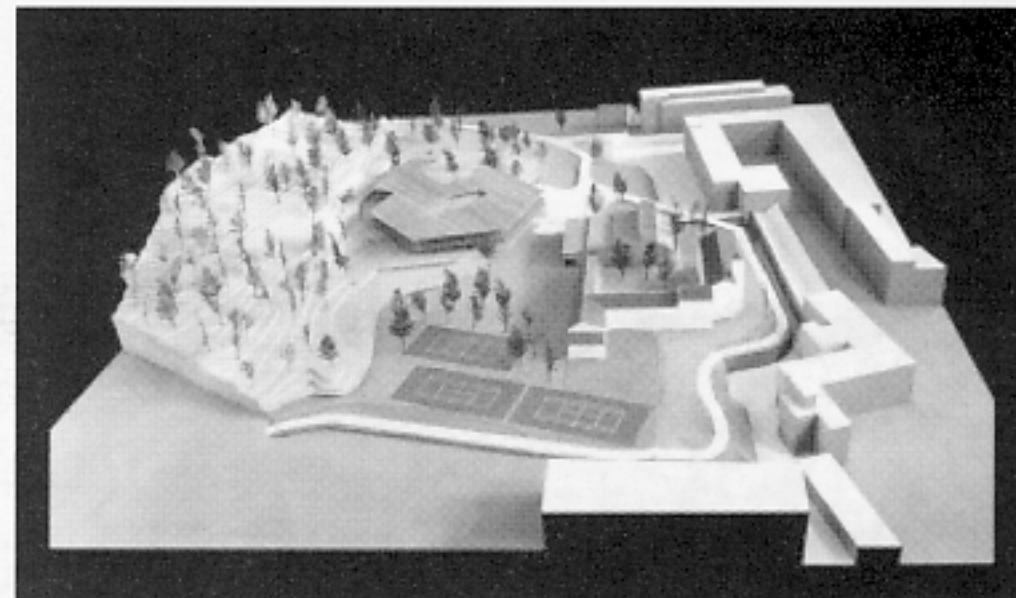
Tav. XIX – Milano, PAC, Padiglione d'Arte Contemporanea (1947-53); interno.



Tav. XX – Milano, PAC, Padiglione d'Arte Contemporanea (1947-53): interno.



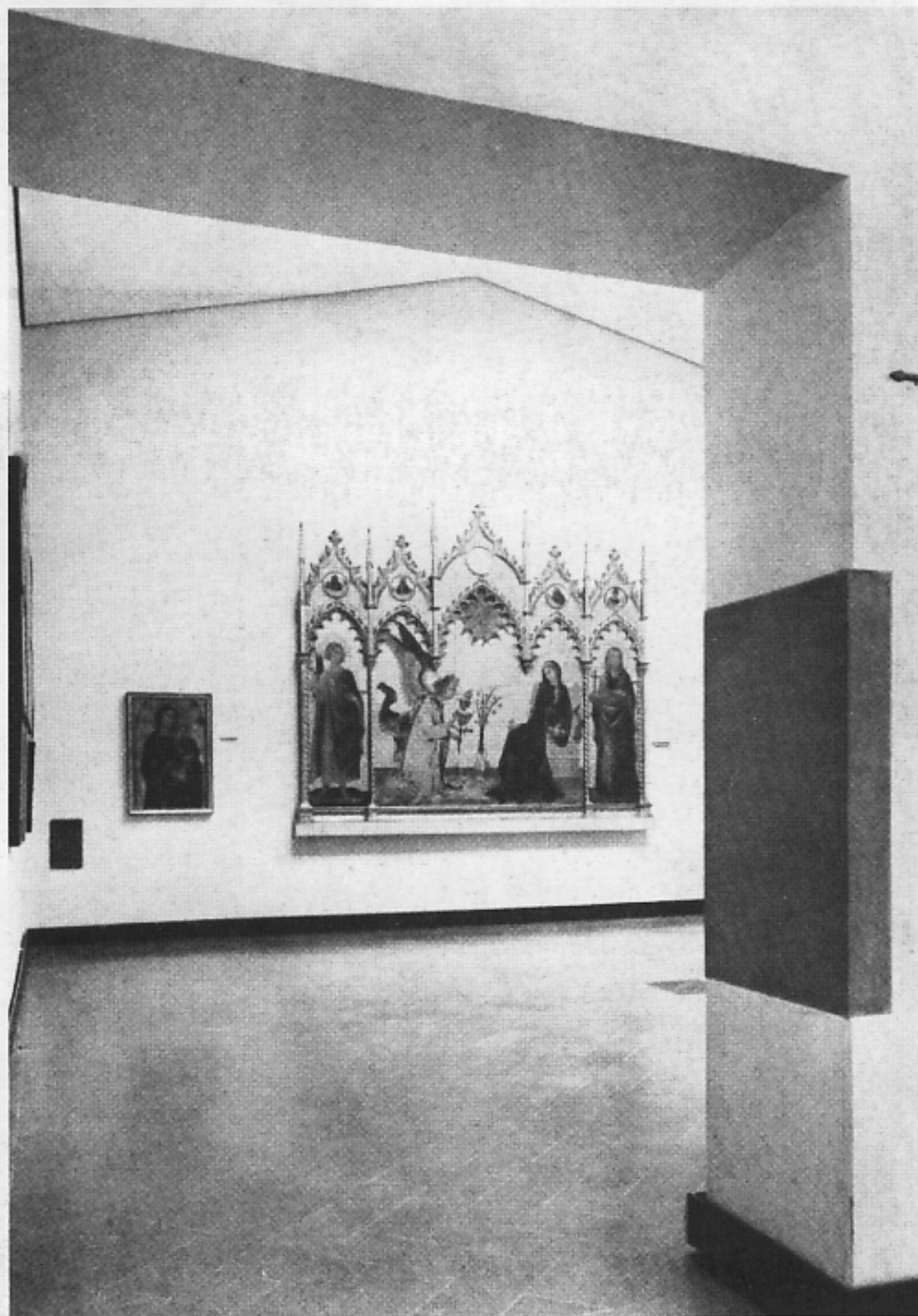
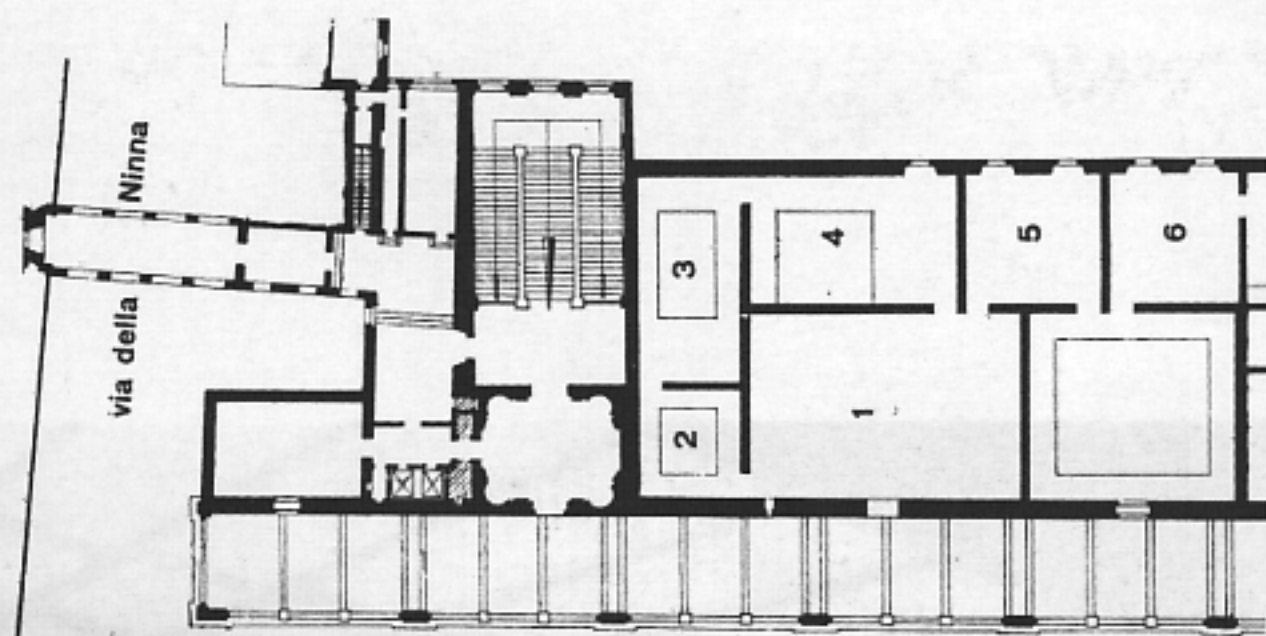
Tav. XXX – Milano, Mostra della sedia italiana nei secoli, IX Triennale (1951): pianta del piano e del soppalco, vista d'insieme.



Tav. XXXVIII – Ivrea, Centro ricreativo Olivetti (1953-59): modello d'insieme, esterni e interni.



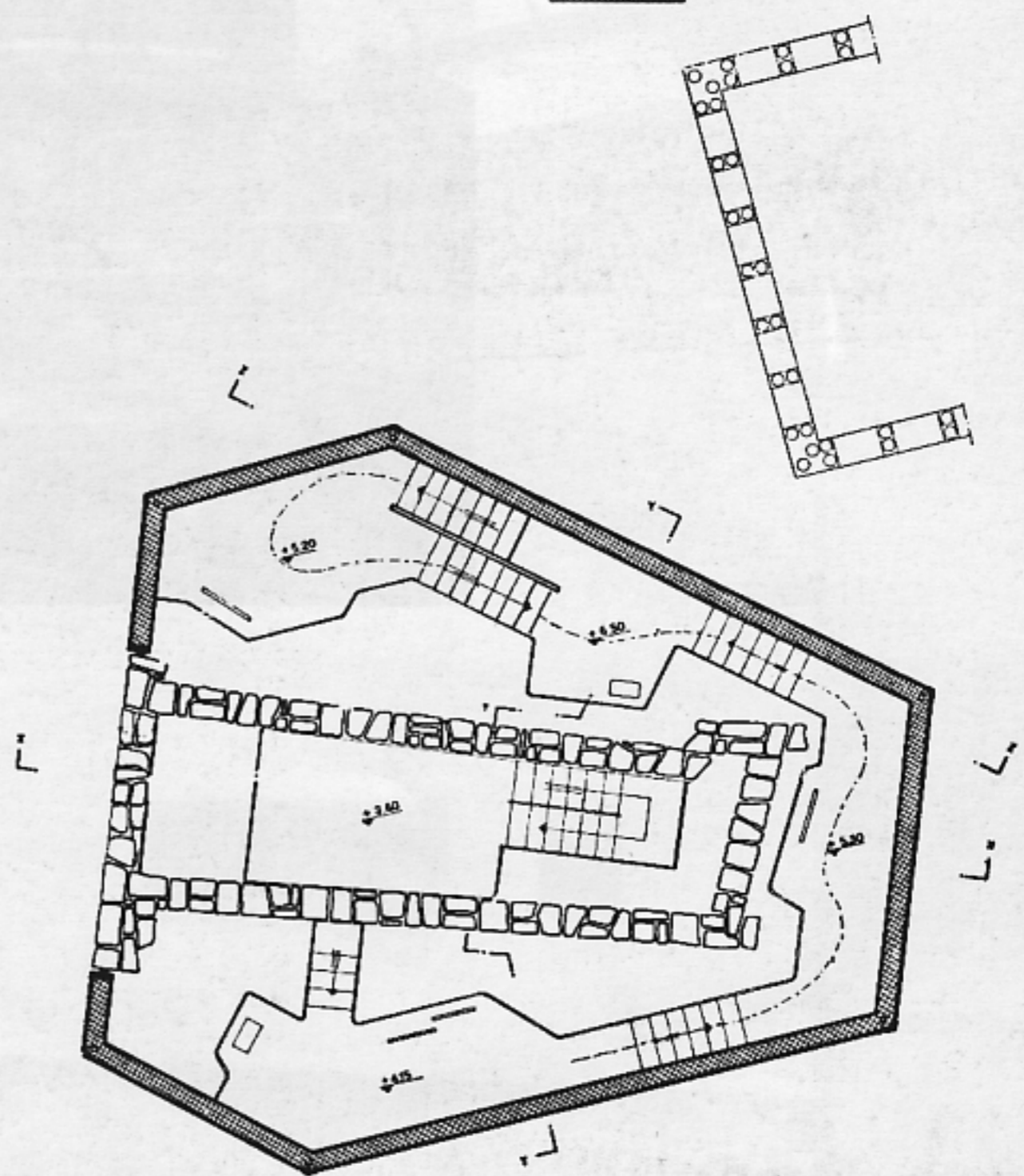
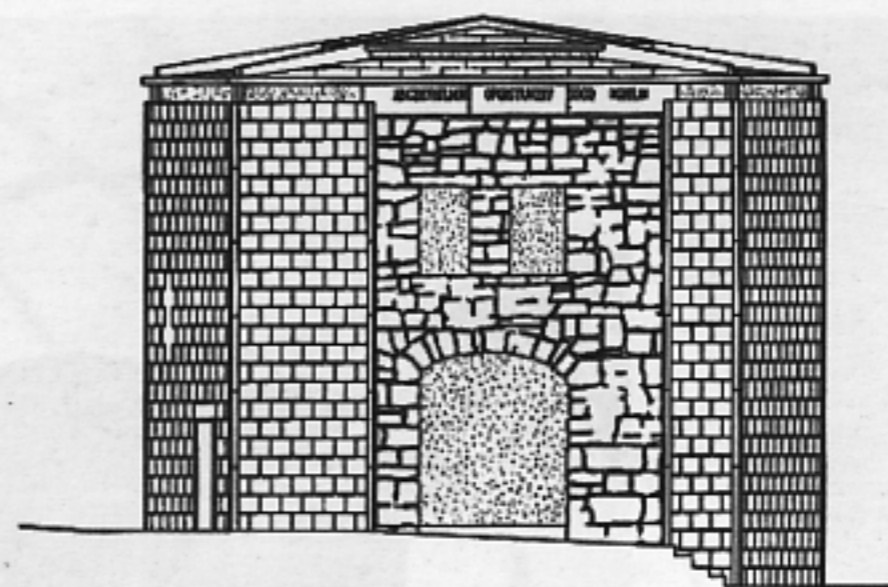
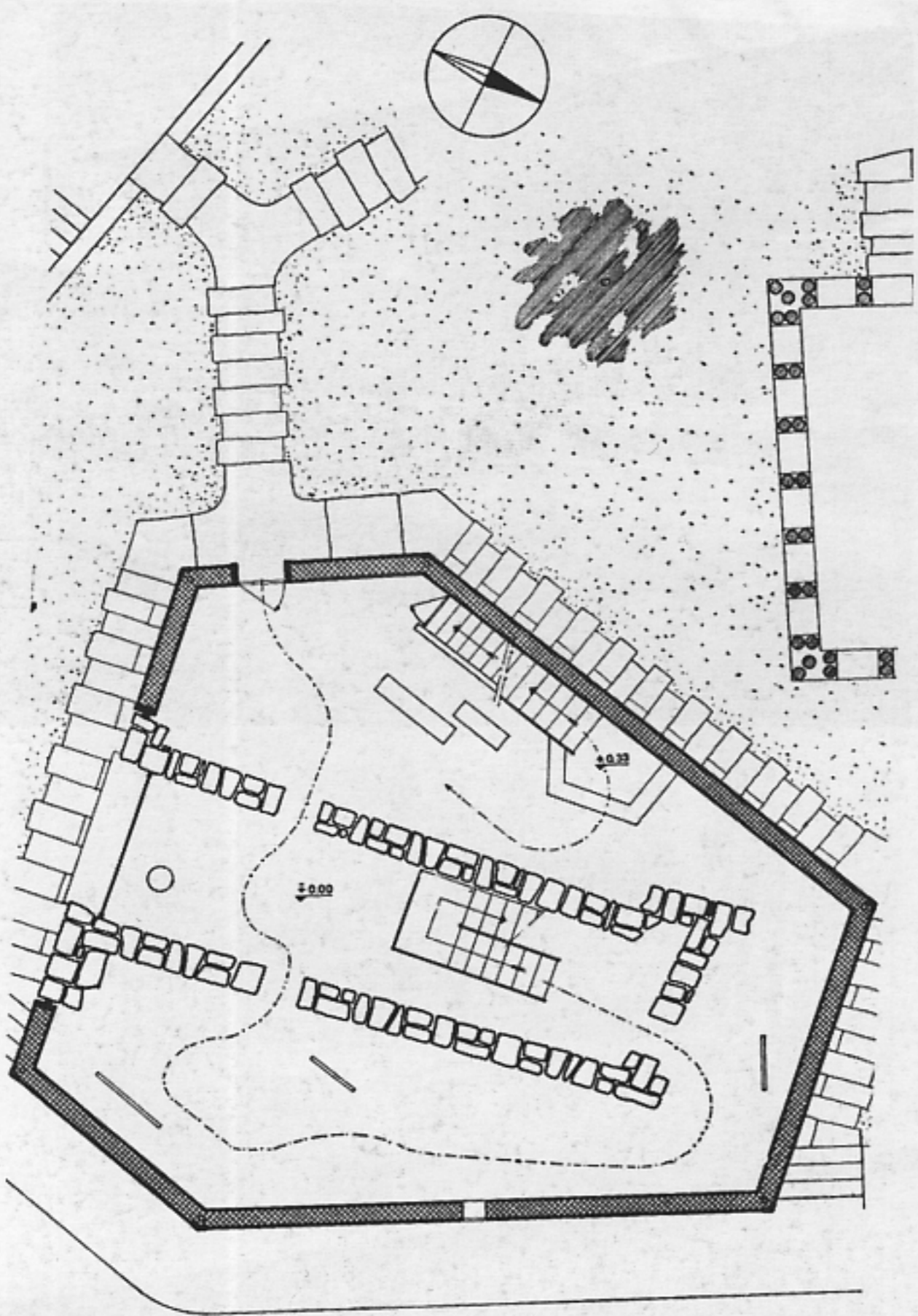
Tav. XXXIX – Ivrea, Mensa Olivetti (1958): esterno.



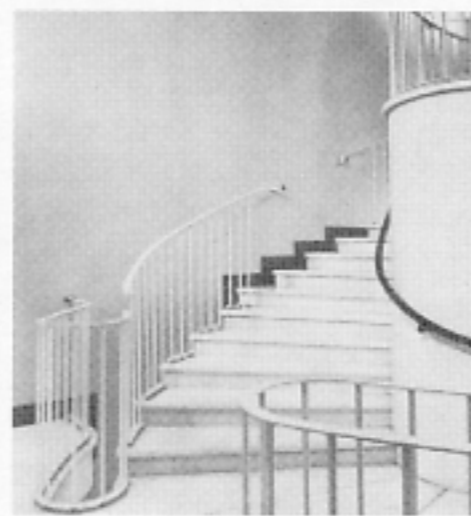
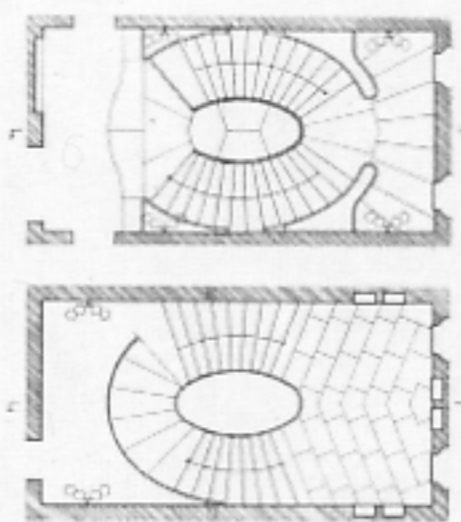
Tav. XL - Firenze, sistemazione di alcune sale della Galleria degli Uffizi (con Giovanni Michelucci e Carlo Scarpa, 1954-56): pianta e sale.



Tav. XLI – Firenze, sistemazione di alcune sale della Galleria degli Uffizi (con Giovanni Michelucci e Carlo Scarpa, 1954-56): sala.



Tav. XLIII - Genova, Casa di Colombo e Museo Colombiano (1955): fronte a sud, pianta a +1,80 e a +6,80.



Tav. XLIV – Milano, Raccolta Grassi nella Villa Belgiojoso (1957): piante, vedute della scala, allestimento di una sala.



Tav. XLVI - Arese, Uffici Alfa Romeo (1967-69).