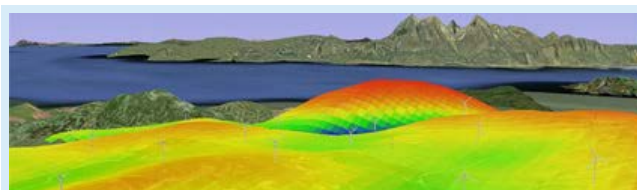


You are here: [Home](#) > [Events](#) > [EWEA workshops](#) > [Past Workshops](#) > [Resource Assessment 2013](#) > [Call for abstracts – closed](#)



**EWEA Technology Workshop:  
Resource Assessment 2013  
Dublin, Ireland  
25 & 26 June 2013**

## Call for abstracts

The call for abstracts has now closed (submission deadline was 10 May 2013).

EWEA will contact all those who submitted an abstract by the end of May to let them know if theirs has been selected for full presentation at the workshop in Dublin on 25 & 26 June 2013.

Note to students: to facilitate participation, EWEA will cover travel and accommodation expenses if the selected presentation is by a full-time student (e.g. PhD or similar).

**Session 1: Application of mesoscale models for resource assessment, with special focus on reducing uncertainties related to long term correlations**

09:10 – 11:00, Tuesday 25 June 2013

Chair: Hans Ejning Jørgensen, Head of Meteorology Programme, DTU Wind Energy, Denmark

This session invites papers relating to mesoscale models used for estimation long-term correlation and other advanced MCP techniques.

**Session 2: Wind conditions modelling**

11:30 – 13:30, Tuesday 25 June 2013

Chair: Oisín Brady, Director, Natural Power France

**Abstracts:** this session invites papers relating to advances in the micro-scale description of wind behaviour across wind farm sites. This may include subjects relating to the assimilation of remote sensing and other advanced field data-gathering techniques in flow models, model developments, model nesting, operational feedback and examples of model deviation. Priority will be given to concepts that have been subject to a reasonable level of field validation, are based on relevant case studies or else show exceptional scientific merit. Particular care shall be taken to present results in a manner that is relevant to practicing engineers in the wind industry. Flow models shall be understood to include all relevant scales from macro to micro-scale.

## Meet these leading companies exhibiting at the workshop:



### Attendee feedback:

*"Worked well, let's do it again in two years time"*

Representative of DTU Wind Energy, at EWEA's technology workshop, Rotterdam, December 2013

### EWEA Workshops

[Analysis of Operating Wind Farms 2014](#)

[Wind Turbine Sound 2014](#)

[Resource Assessment 2015](#)

### Past Workshops

[REserviceS Final Event](#)

[Wind Power Forecasting 2013](#)

[Resource Assessment 2013](#)

[Attendee look-up](#)

[Programme & Presentations](#)

[CREYAP exercise part II](#)

[Workshop dinner: Old Jameson Distillery](#)

[Power curve working group](#)

[Wind Turbine Noise 2012](#)

[Analysis of Operating Wind Farms 2012](#)

[Resource Assessment 2011](#)

[Past Events & Proceedings](#)

Share this page on:



#### About the European Wind Energy Association

*EWEA is the voice of the wind industry, actively promoting wind power in Europe and worldwide. It has over 600 members, which are active in over 50 countries, making EWEA the world's largest and most powerful wind energy network.*

Rue d'Arlon 80, B-1040 Brussels, Belgium  
Tel: +32 2 213 1811 / Fax: +32 2 213 1890  
E-mail: [ewea@ewea.org](mailto:ewea@ewea.org) / VAT: BE 0476 915 445

#### Our activities

Policy issues  
EU-funded projects  
Events  
Campaigns  
Charities and awards  
Comparison exercises

#### Press room

Press releases  
Blog posts  
Articles  
Social networks  
All EWEA news

#### Library

Publications  
Statistics  
Wind Energy Basics  
Logos  
Photos  
Videos

#### About us

Governance  
Vision, mission & values  
History  
Job opportunities  
Contact  
How to find us