

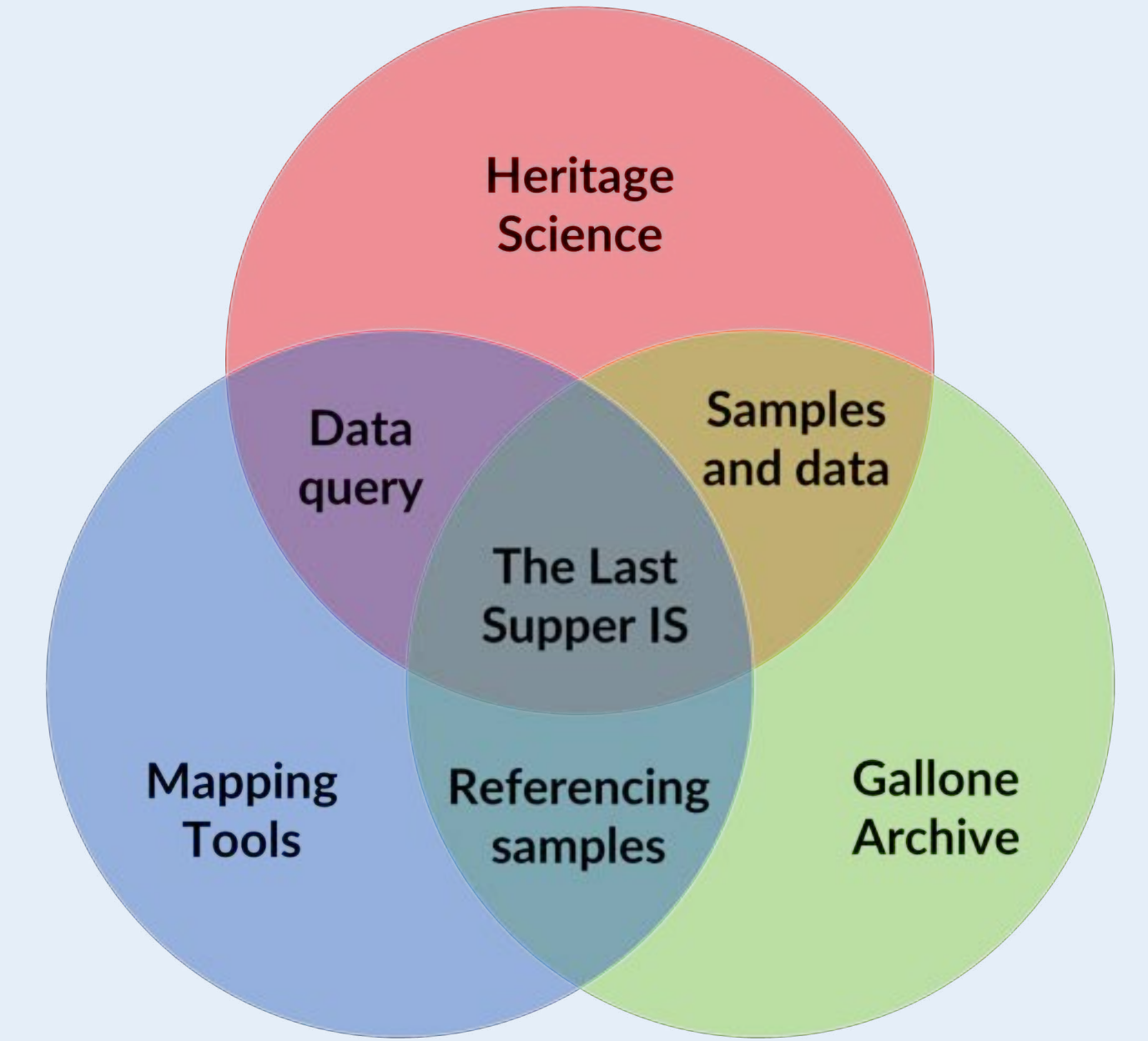


# The Last Supper Information System: Samples from Gallone Archive

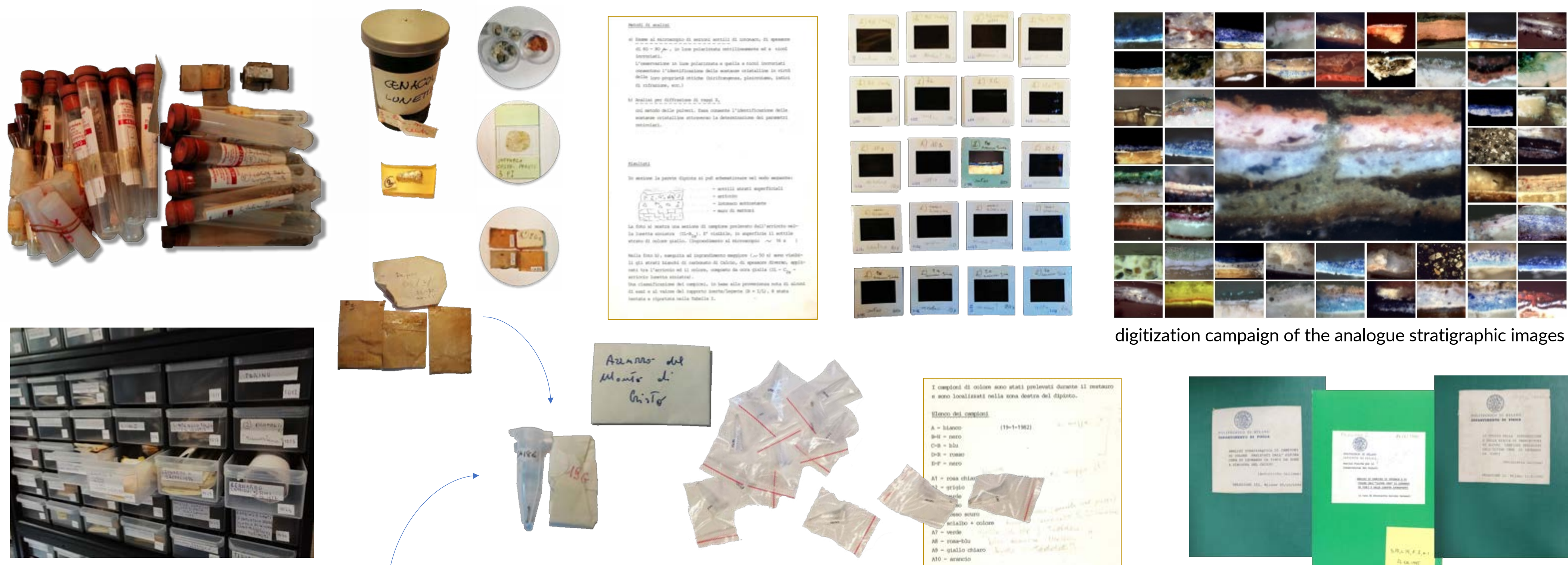
Serena Benelli<sup>1,2</sup>, Franco Spettu<sup>1</sup>, Cristiana Achille<sup>1</sup>, Ezio Puppini<sup>2</sup>

<sup>1</sup> Department of Architecture, Built Environment and Construction Engineering, Politecnico di Milano (serena.benelli, franco.spettu, cristiana.achille)@polimi.it  
<sup>2</sup> Department of Physics, Politecnico di Milano - ezio.puppini@polimi.it

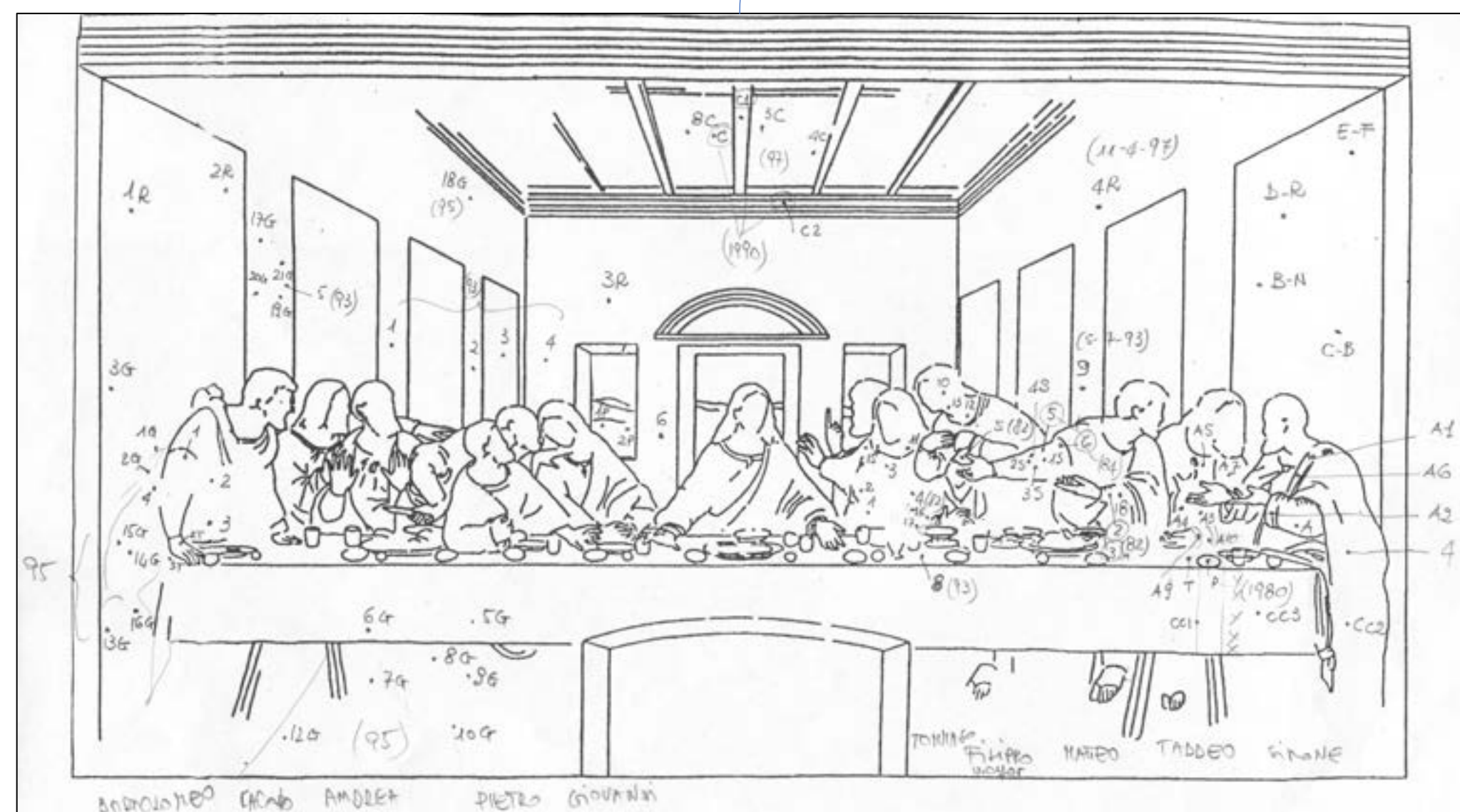
Mapping at the service of conservation: designing an information system to reference the samples on the artwork surface. Towards an open access online repository of the analytical data about the work of Leonardo da Vinci, sharing knowledge among scholars involved in the conservation field.



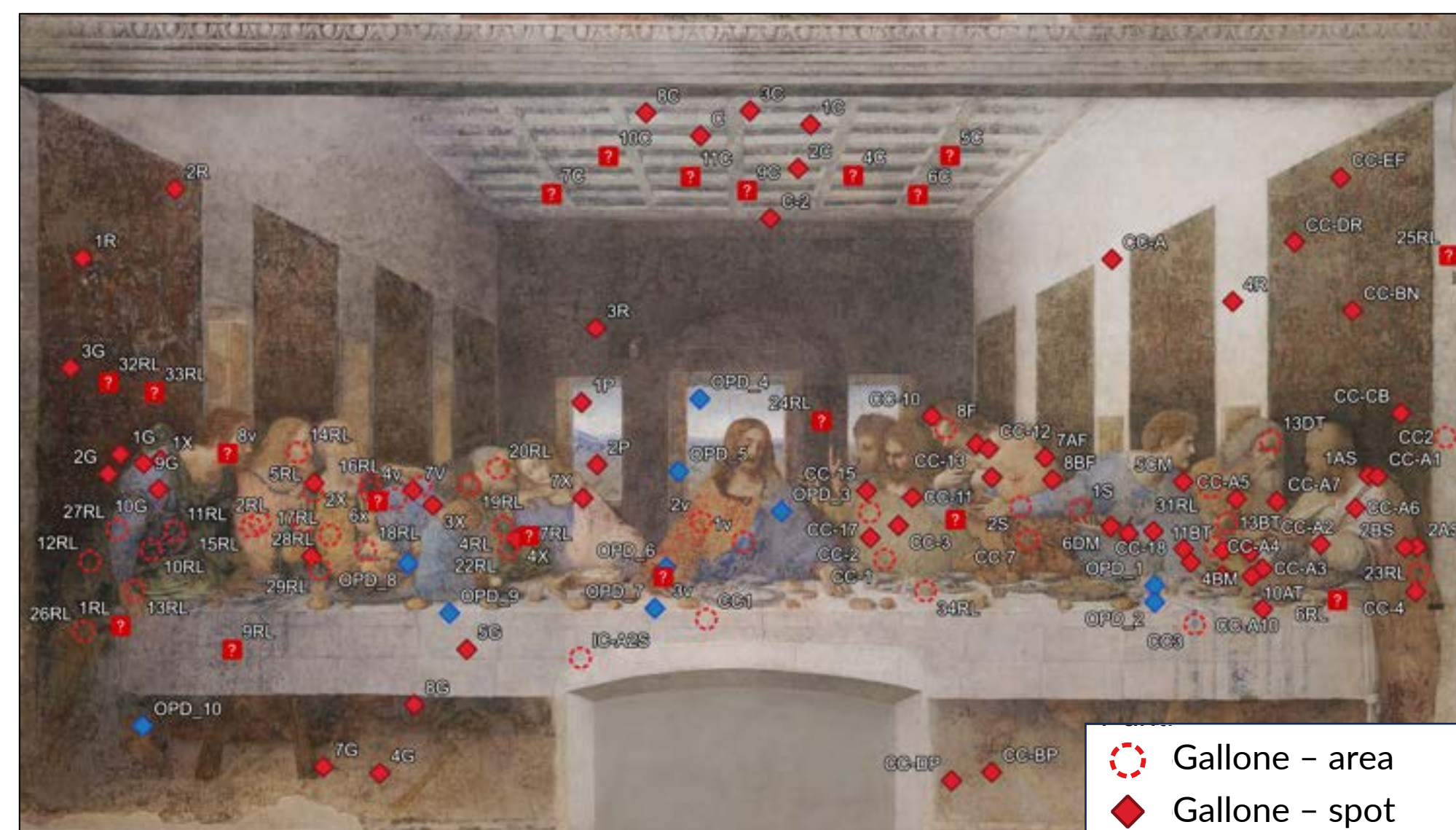
## From the scattered archive materials to a centralized database



digitization campaign of the analogue stratigraphic images



One of the sampling maps for the Last Supper conserved in the Gallone Archive. The drawing was the common support for referencing the sampling points taken from the painting by the restoration equipe lead by Pinin Brambilla Barilioni. The restoration (from the late 1970s to 1999) was supported since the early 1980s by Antonietta Gallone's diagnostic analyses.



The red symbols correspond to the Gallone archive sampling points, while the blue ones come from the Opificio delle Pietre Dure (OPD) Archive in Florence.

- Gallone - area
- Gallone - spot
- Gallone - approx.
- OPD - area
- OPD - spot
- OPD - approx.

## Main features

### Gallone Archive

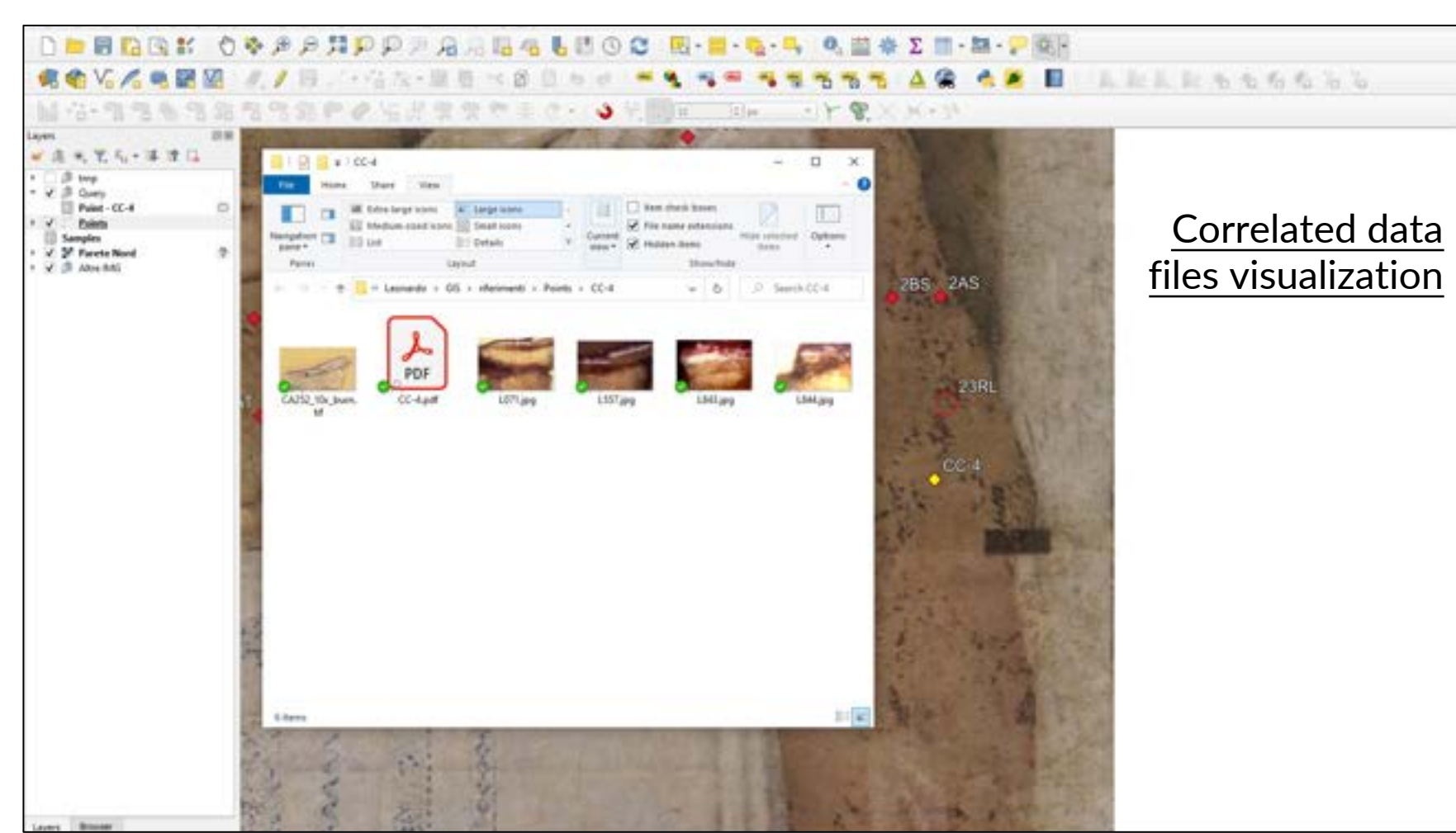
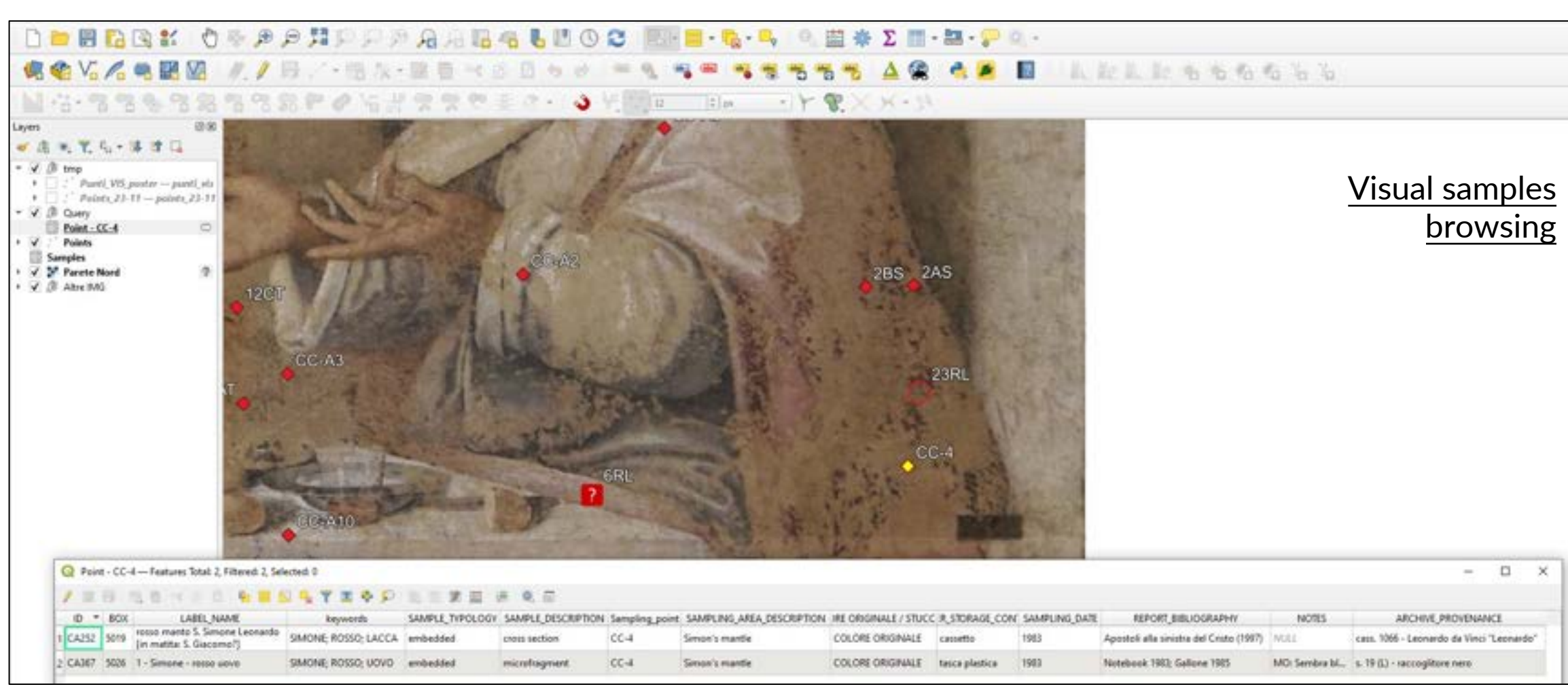
- scattered materials
- data and samples classification
- analogue data digitization
- normalization of information
- data systematisation
- guidelines for users
- control samples provenance
- data merging and validation
- link between different institution archives

### Information System

- referencing sampling points on the artwork surface
- referencing precision assessment
- data query on attributes
- designed for future data insertion (e.g., new analytical researches on samples)
- user-friendly interface

### Future development

- FAIR principles application
- web sharing
- open access
- scalability of the system
- access levels definition
- back-office interface: data management
- front-office interface: access and dissemination
- enhancing the database, looking for new references and data
- cooperating with institutes who share the same goals



Opificio delle Pietre Dure di Firenze  
S 12  
Leonardo da Vinci  
Ultima Cena  
S. Maria delle Grazie  
Milano

Last Supper sampling materials from the Opificio delle Pietre Dure Scientific Laboratory Archive in Florence.  
From left to right: sampling map, samples, stratigraphies and analog slide film of the samples, Information System query on the OPD sampling points.