

UNA CITTA' POSSIBILE.
ARCHITETTURE
DI IVAN LEONIDOV,
1926-1934

TRIENNALE DI MILANO
31.05_08.07.2007

ARCHITEKTUR VON
IVAN LEONIDOV.
EIN RUSSISCHER
KONSTRUKTIVIST

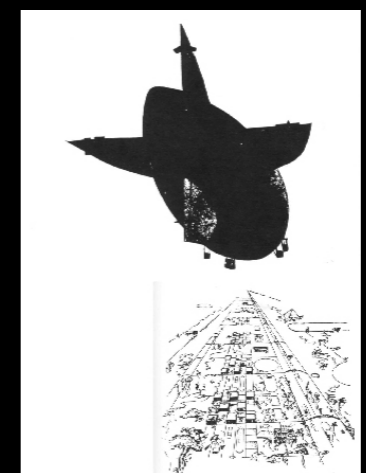
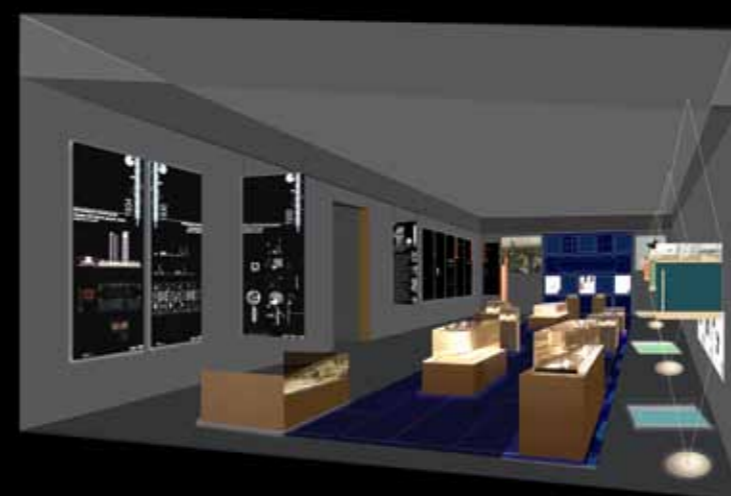
ARCHITEKTUR IM RINGTURM
WIEN
19.03_30.04.2010



IVAN LEONIDOV.
ARCHITEKT DES
RUSSISCHEN
KONSTRUKTIVISMUS

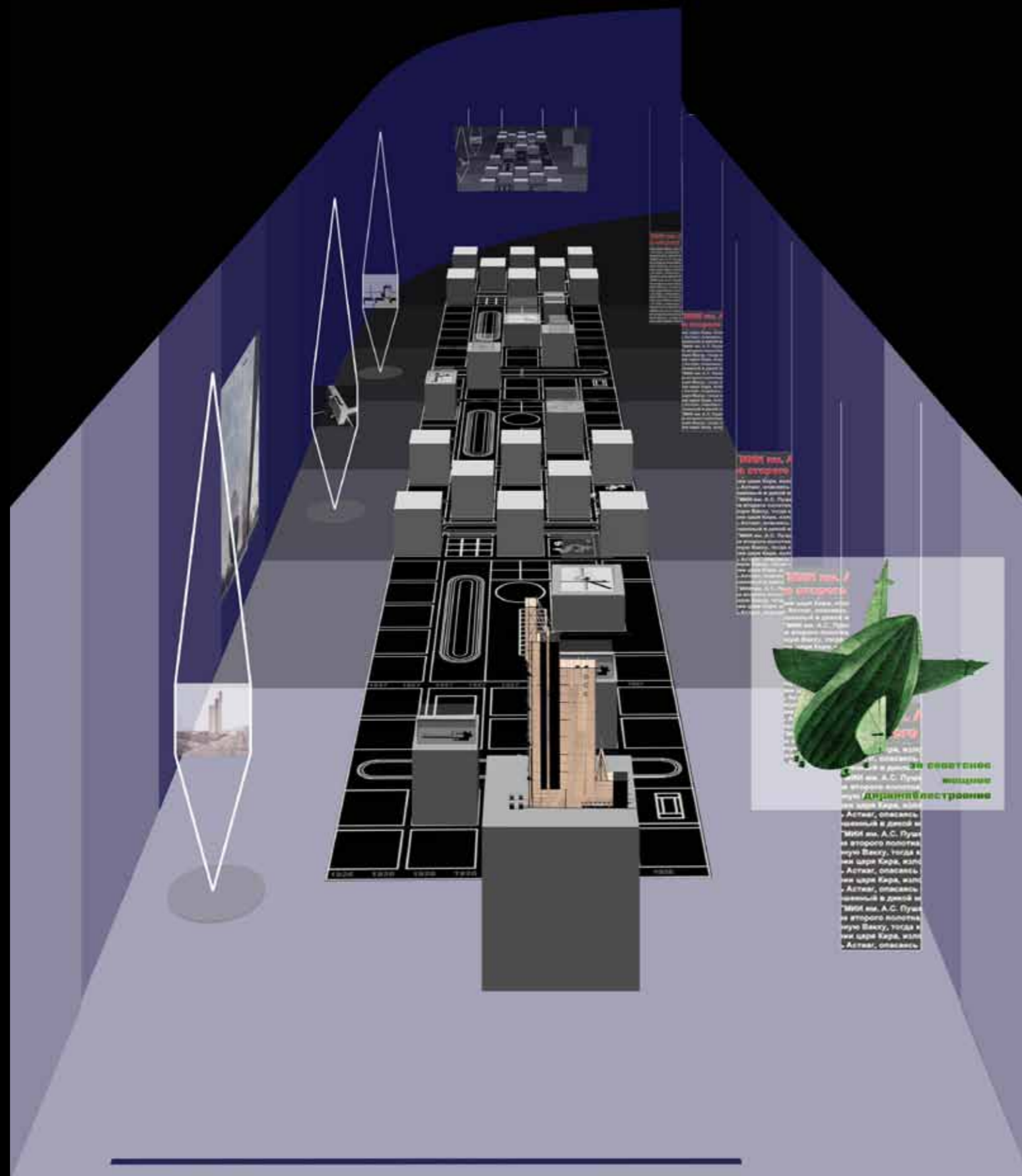
FH KAERTEN
SPITTAL/DRAU
19.05_04.06.2010

A POSSIBLE CITY.
ARCHITECTURES BY
IVAN LEONIDOV



MUSEUM OF FINNISH
ARCHITECTURE
HELSINKI
date to be fixed

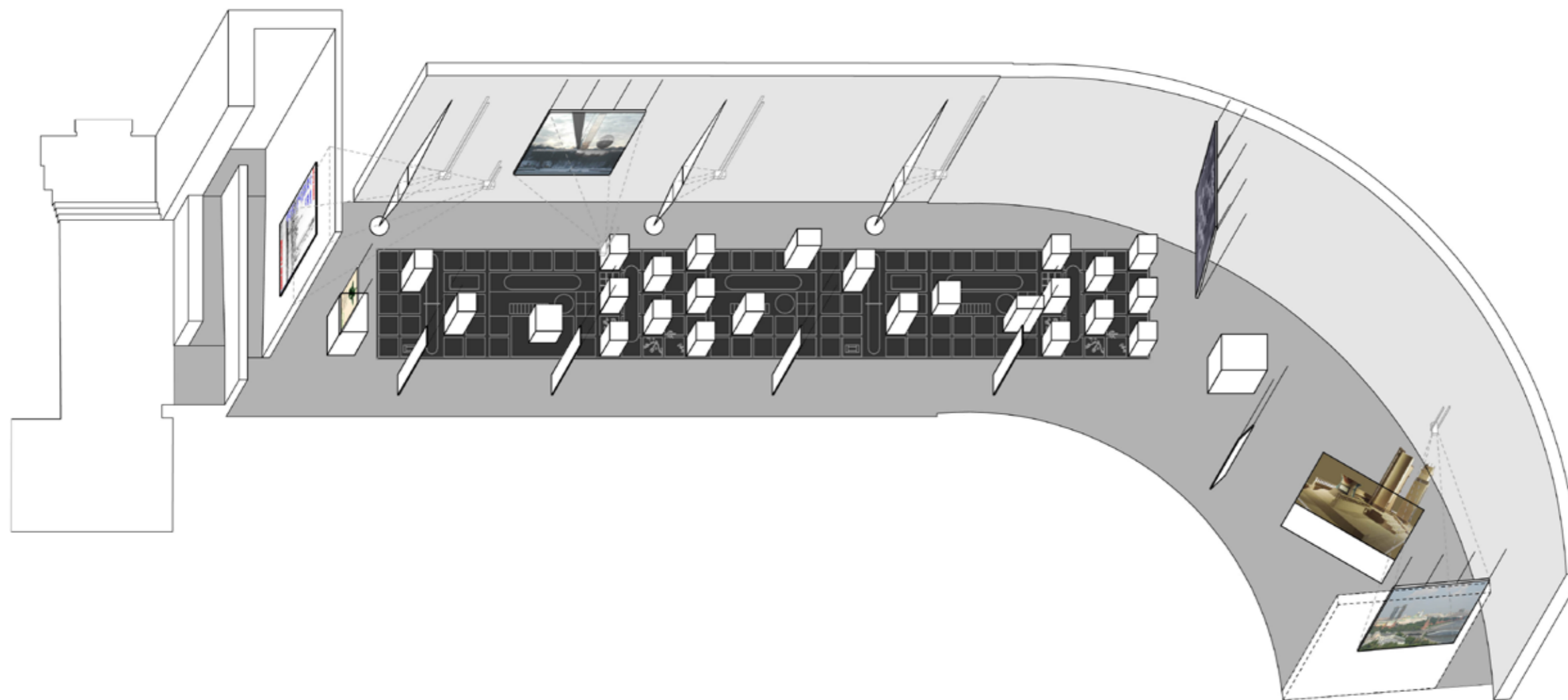
EXHIBITIONS DESIGN:
Maurizio Meriggi
and Sabrina Greco



UNA CITTA' POSSIBILE.
ARCHITETTURE
DI IVAN LEONIDOV,
1926-1934

TRIENNALE DI MILANO
31.05_08.07.2007

EXHIBITION DESIGN:
Maurizio Meriggi
and Sabrina Greco



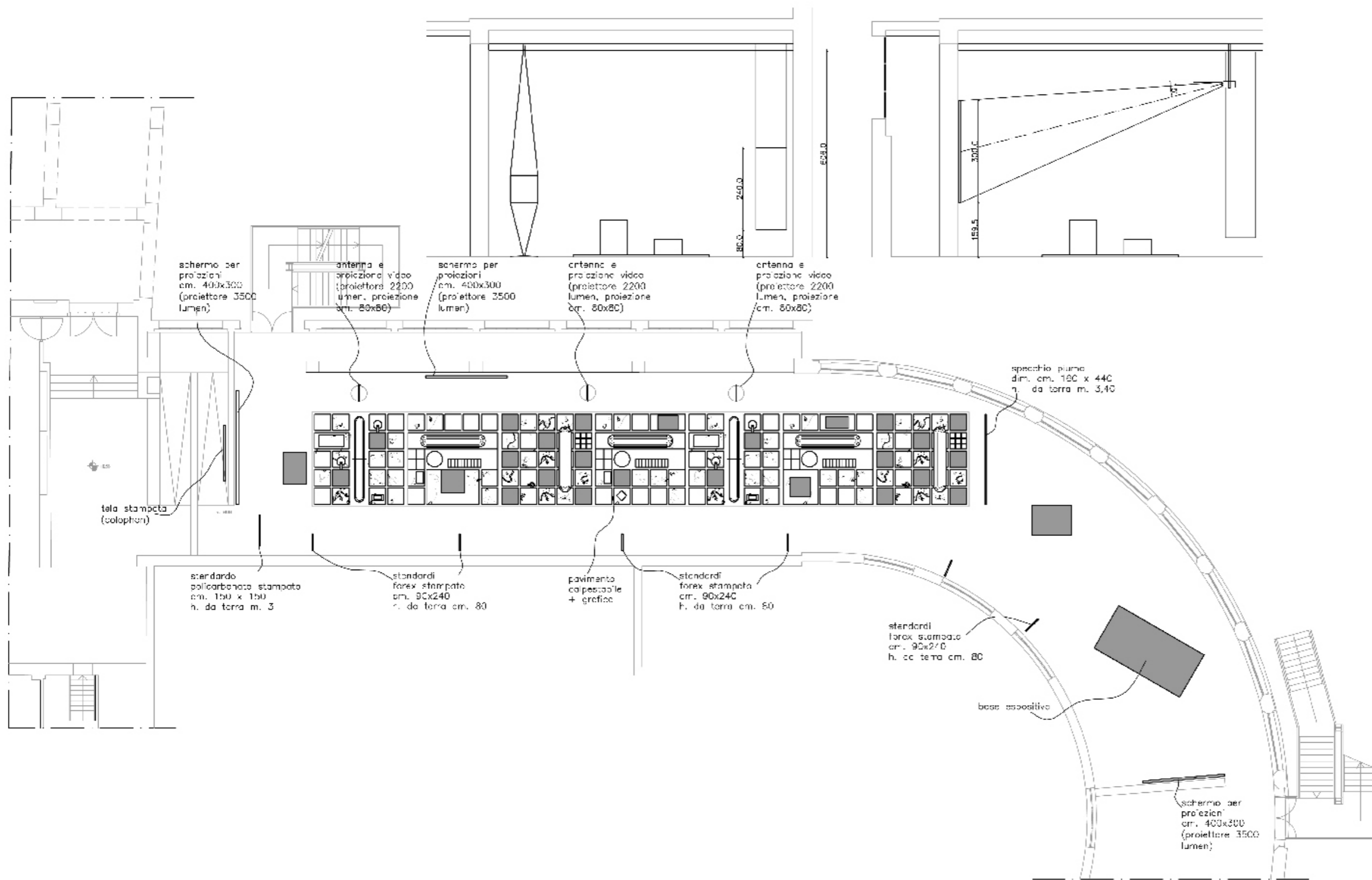
UNA CITTA' POSSIBILE.
ARCHITETTURE
DI IVAN LEONIDOV,
1926-1934

TRIENNALE DI MILANO
31.05_08.07.2007

TRIENNALE DI MILANO
Palazzo dell'Arte Viale Alemagna 6 Milano
allestimento mostra: **UNA CITTA' POSSIBILE
ARCHITETTURE DI IVAN LEONIDOV**
sabrina greco architetto
via dante chiasserini 68 20157 milano tel. 347 3196473 fax. 02 3900 5419 email grecomeriggi@tiscali.it

PROGETTO ESECUTIVO elaborati grafici 11 maggio 2007

EXHIBITION DESIGN:
Maurizio Meriggi
and Sabrina Greco



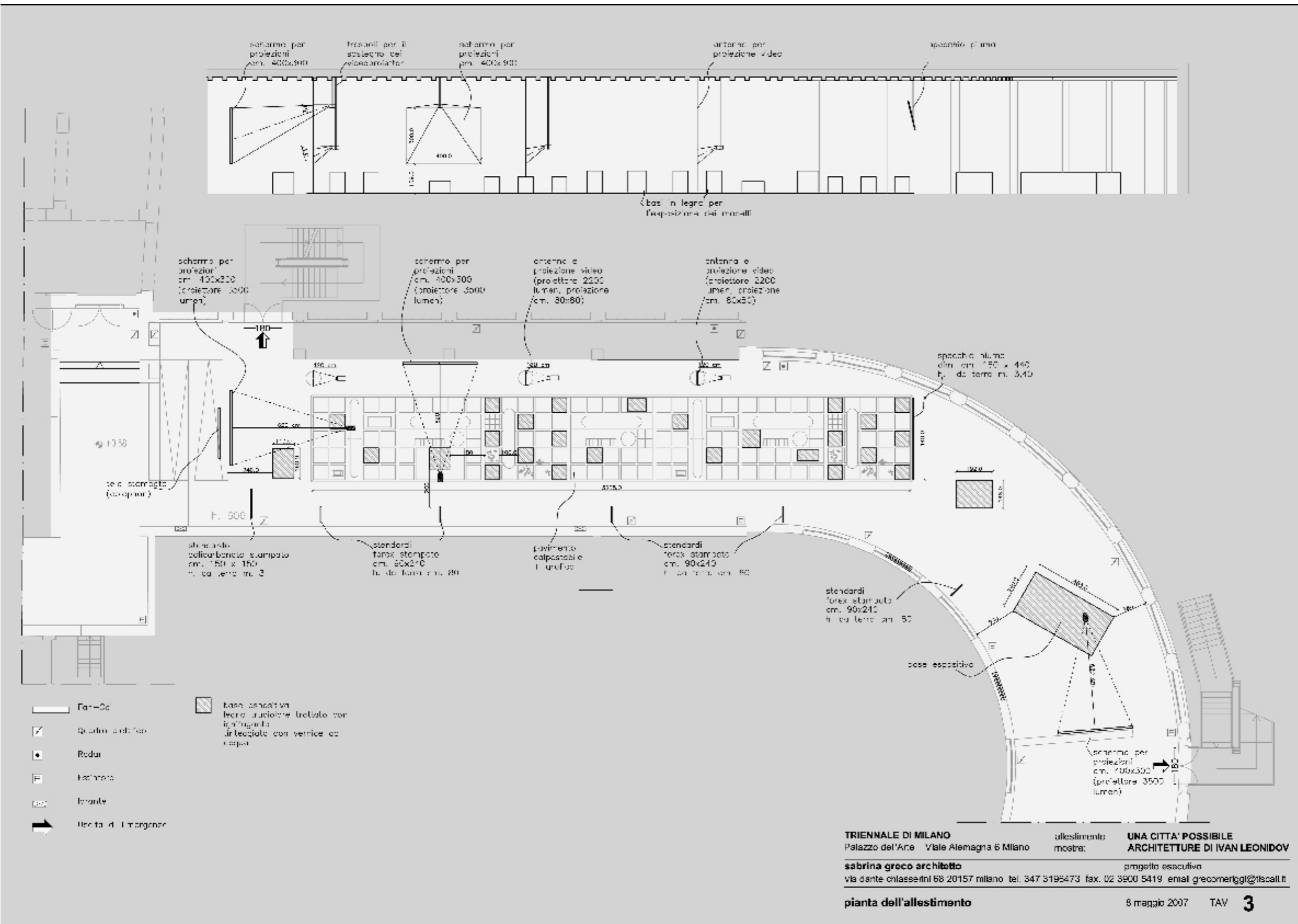
UNA CITTA' POSSIBILE.
ARCHITETTURE
DI IVAN LEONIDOV,
1926-1934

TRIENNALE DI MILANO
31.05_08.07.2007

TRIENNALE DI MILANO
Palazzo dell'Arte Viale Alemagna 6 Milano
allestimento mostra: **UNA CITTA' POSSIBILE**
ARCHITETTURE DI IVAN LEONIDOV
sabrina greco architetto
via dante chiasserini 68 20157 milano tel. 347 3196473 fax. 02 3900 5419 email grecomeriggi@tiscali.it
progetto esecutivo

pianta e sezioni dell'allestimento 8 maggio 2007 TAV **4**

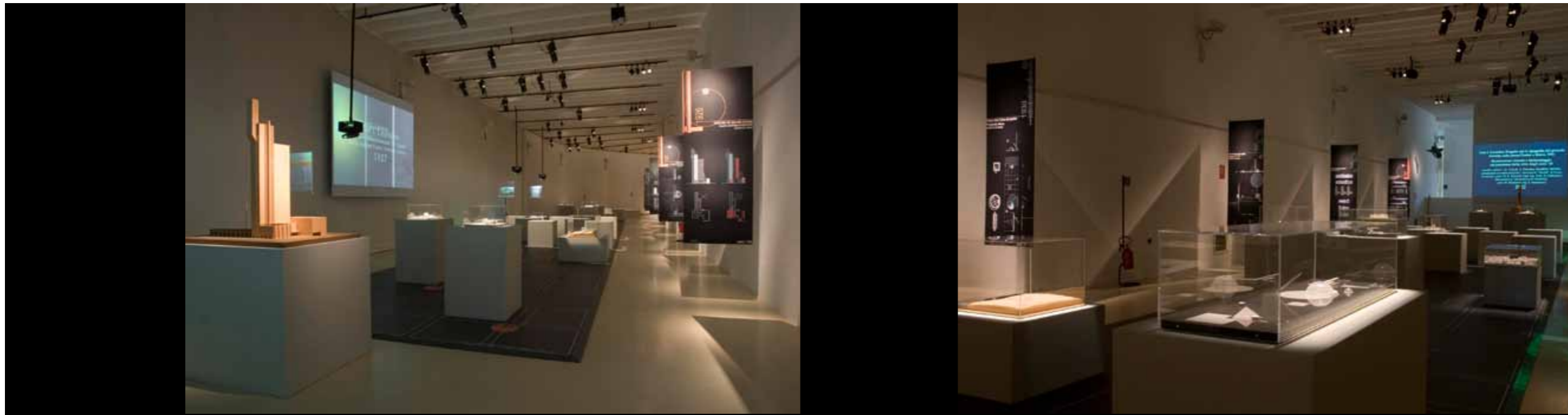
EXHIBITION DESIGN:
Maurizio Meriggi
and Sabrina Greco



UNA CITTA' POSSIBILE.
 ARCHITETTURE
 DI IVAN LEONIDOV,
 1926-1934

TRIENNALE DI MILANO
 31.05_08.07.2007

EXHIBITION DESIGN:
 Maurizio Meriggi
 and Sabrina Greco



UNA CITTA' POSSIBILE.
ARCHITETTURE
DI IVAN LEONIDOV,
1926-1934

TRIENNALE DI MILANO
31.05_08.07.2007



EXHIBITION DESIGN:
Maurizio Meriggi
and Sabrina Greco



UNA CITTA' POSSIBILE.
ARCHITETTURE
DI IVAN LEONIDOV,
1926-1934

TRIENNALE DI MILANO
31.05_08.07.2007



EXHIBITION DESIGN:
Maurizio Meriggi
and Sabrina Greco



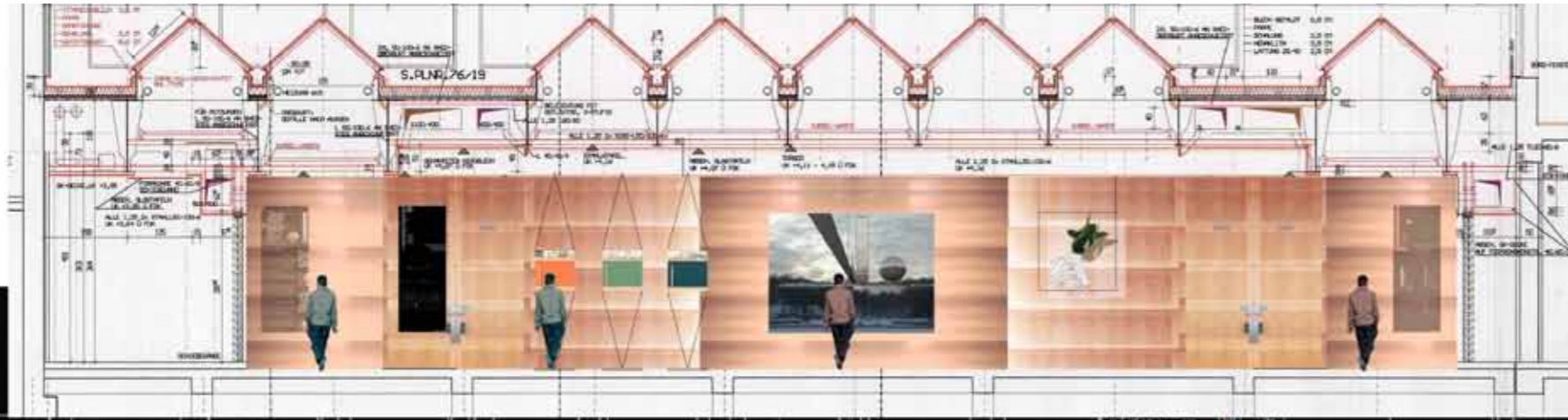
ARCHITEKTUR VON
IWAN LEONIDOV.
EIN RUSSISCHER
KONSTRUCTIVIST

ARCHITEKTUR IM RINGTURM
WIEN
19.03_30.04.2010



EXHIBITION DESIGN:
Maurizio Meriggi
and Sabrina Greco

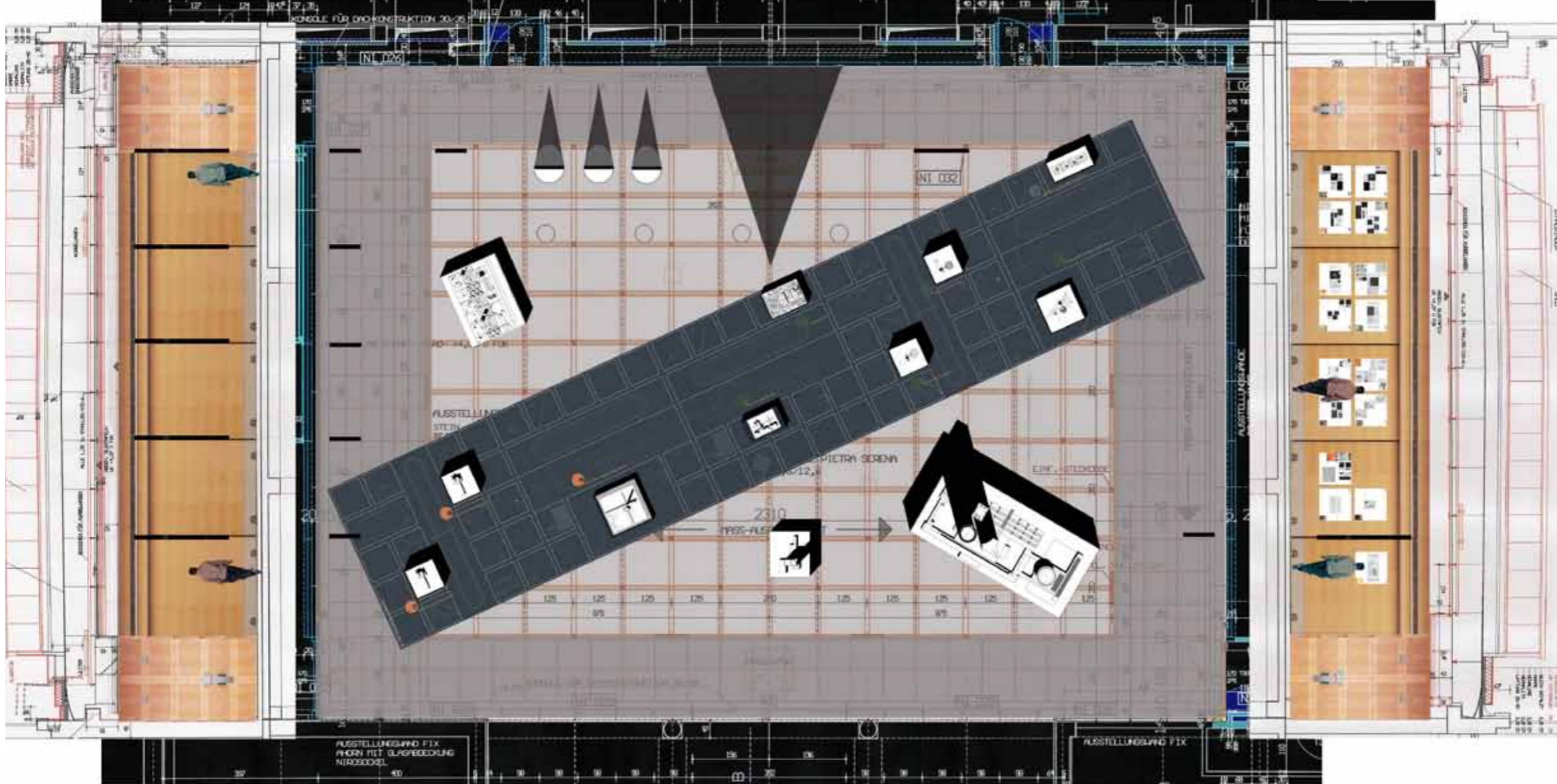
WALL B



ARCHITEKTUR VON
IWAN LEONIDOV.
EIN RUSSISCHER
KONSTRUCTIVIST

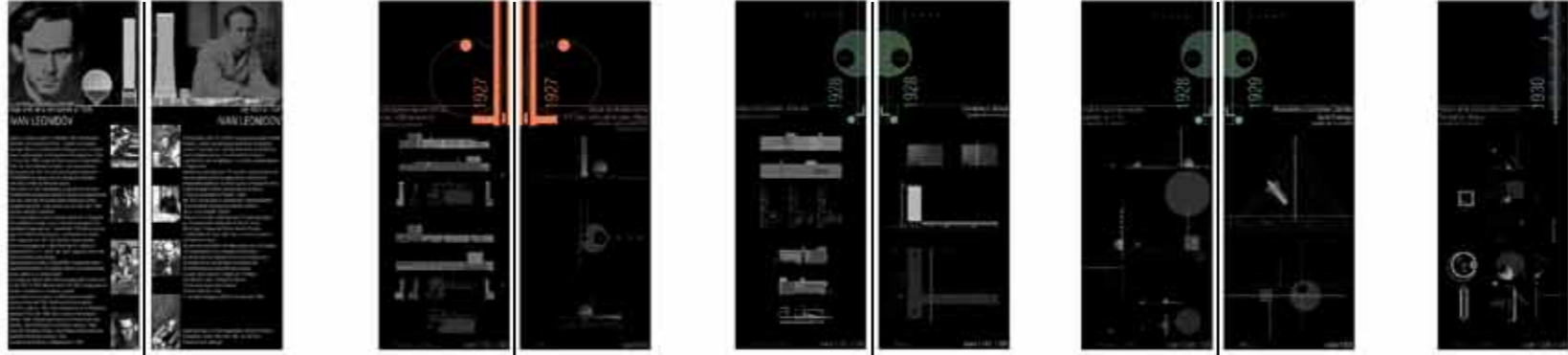
ARCHITEKTUR IM RINGTURM
WIEN
19.03_30.04.2010

WALL C



WALL A

EXHIBITION DESIGN:
Maurizio Meriggi
and Sabrina Greco



ARCHITEKTUR VON
IWAN LEONIDOV.
EIN RUSSISCHER
KONSTRUKTIVIST

ARCHITEKTUR IM RINGTURM
WIEN
19.03_30.04.2010

WALL A

scale 1:50

EXHIBITION DESIGN:
Maurizio Meriggi
and Sabrina Greco

Palace of culture of Proletarskij district,
Moscow 1930
redrawings, panel 90 x 240 cm.

cm 042 x 96 panel 'sgunrawrapa
'tunumono Colombo's monument
Santo Domingo
Cristoforo Colombo's monument
Worker's club of new social type, var. A and B,
1928
redrawings, panel 90 x 240 cm.

cm 042 x 96 panel 'sgunrawrapa
'zniojostesl
Moscow
House of Government of Kazak Republic,
Alma Ata 1928
redrawings, panel 90 x 240 cm.

cm 042 x 96 panel 'sgunrawrapa
'redrawings
Moscow 1927
Lenin Institute
Worker's club for 500 and 1000 persons,
1926
redrawings, panel 90 x 240 cm.

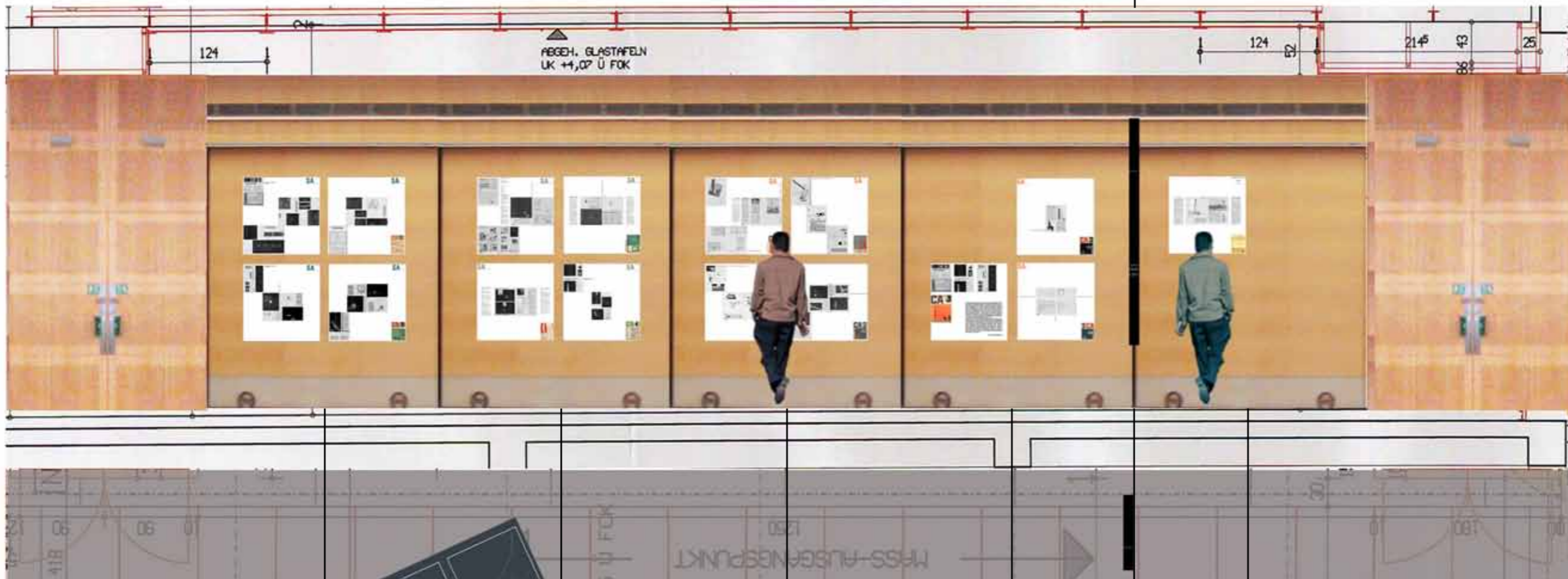
cm 042 x 96 panel 'sgunrawrapa
'redrawings
Text by S. O. Khan Magomedov,
Iwan Leonidov's Biography 1901-1930
Iwan Leonidov's Biography 1901-1930
Text by S. O. Khan Magomedov,
panel 90 x 240 cm.



ARCHITEKTUR VON
IWAN LEONIDOV.
EIN RUSSISCHER
KONSTRUKTIVIST

ARCHITEKTUR IM RINGTURM
WIEN
19.03_30.04.2010

WALL C



"Sovremennaja Arkhitektura" 3-1930
original drawings of the
Magnitogorsk linear city

"Sovremennaja Arkhitektura" 3-1930
original drawings of the
Magnitogorsk linear city

"Sovremennaja Arkhitektura" 4/5-
1927 original drawings of the
Lenin Institute

"Sovremennaja Arkhitektura" 1-1928
original drawings of the Sov-kino Film
Production Complex

Narkomtjazprom
Headquarter of the newspaper Izvestija,
Moscow 1926
redrawings, panel 90 x 240 cm.
re-drawings, panel 90 x 240 cm.

"Arkhitektura SSR. 10-1934"
original drawings of the
Headquarter of People's Commissariat of
Heavy Industry (Narkomtjazprom)

"Sovremennaja Arkhitektura" 5-1930
original drawings of the
Palace of culture of Proletarskij district

"Sovremennaja Arkhitektura" 5-1930
original drawings of the
Palace of culture of Proletarskij district

"Sovremennaja Arkhitektura" 2-1928
original drawings of the House of Go-
vernment of Kazak Republic

"Sovremennaja Arkhitektura" 2-1929
original drawings of the
Tsentrosojuz

"Sovremennaja Arkhitektura" 3-1929
original drawings of the
Worker's club of new social type

"Sovremennaja Arkhitektura" 3-1929
original drawings of the
Worker's club of new social type

"Sovremennaja Arkhitektura" 4-1929
original drawings of the
Cristoforo Colombo's monument

"Sovremennaja Arkhitektura" 4-1930
original drawings of the
House of Industry

"Sovremennaja Arkhitektura" 1926-
30 , explanatory note by S. O. Khan
Magomedov about Leonidov's original
drawings published in "S.A."

"Sovremennaja Arkhitektura. 3-1926"
original drawings of the
Headquarter of the newspaper Izvestija

"Sovremennaja Arkhitektura" 3-1927
original drawings of the
Worker's club for 500 and 1000 persons

scale 1:50

EXHIBITION DESIGN:
Maurizio Meriggi
and Sabrina Greco



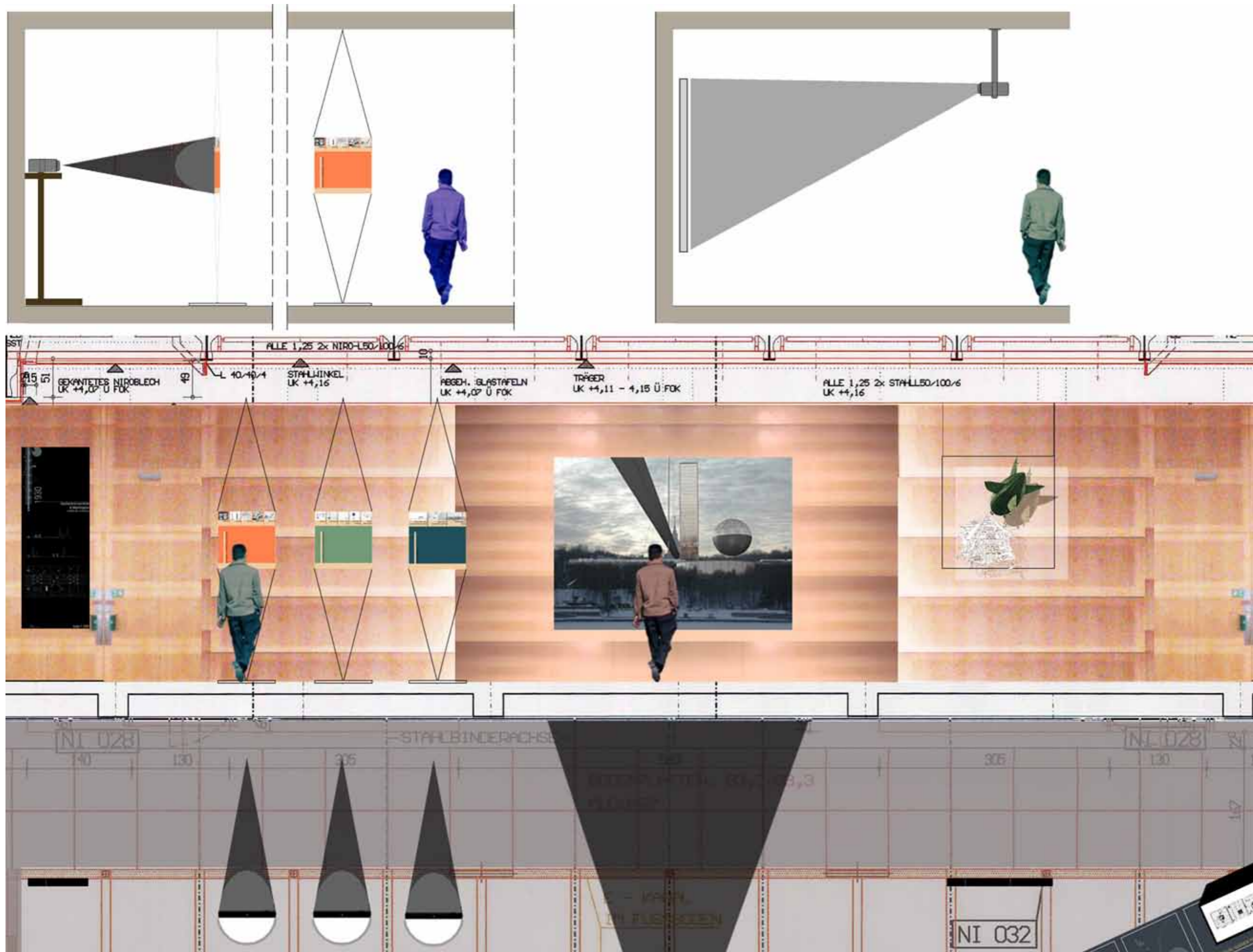
ARCHITEKTUR VON
IWAN LEONIDOV.
EIN RUSSISCHER
KONSTRUCTIVIST

ARCHITEKTUR IM RINGTURM
WIEN
19.03_30.04.2010

WALL B

scale 1:50

EXHIBITION DESIGN:
Maurizio Meriggi
and Sabrina Greco



Magnitogorsk linear city,
Magnitogorsk 1930
redrawings, panel 90 x 240 cm.

The training years
and the early success,
video, optimization
screen 80x80 cm.
4 minutes

Facing the
professional life
video, optimization
screen 80x80 cm.
4 minutes

The great
competitions
video, optimization
screen 80x80 cm.
4 minutes

Virtual reconstruction:
Headquarter and factory of newspaper Izvestija,
Moscow 1926, Lenin Institut, 1927, Narkomtjiazprom,
1934, video
9 minutes

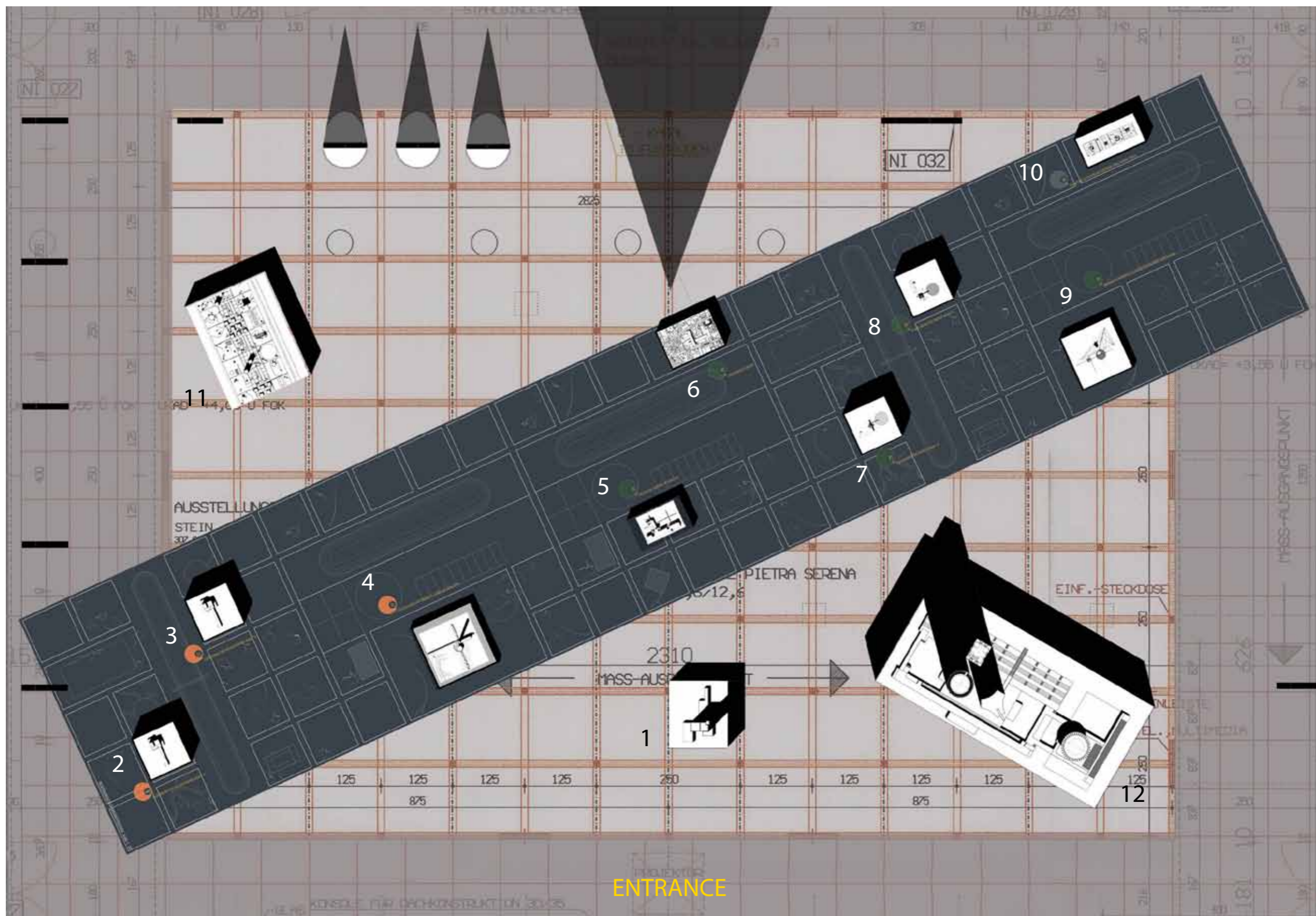
Magnitogorsk linear city perspective view
and the Zeppelin, 1930
perplex panel, 150 x 150 cm.



ARCHITEKTUR VON
IWAN LEONIDOV.
EIN RUSSISCHER
KONSTRUCTIVIST

ARCHITEKTUR IM RINGTURM
WIEN
19.03_30.04.2010

PLAN



PLASTIC MODELS

1. Headquarter and factory of newspaper Izvestija, 1926
Plastic model, scale 1:100, 140 x 100 x 126 cm.
2. Worker's clubs type for 500 persons, 1926
Plastic model, scale 1:200, 60,5 x 40 x 25 cm.
3. Worker's clubs type for 1000 persons, 1926
Plastic model, scale 1:200, 55 x 40 x 25 cm.
4. Lenin Institute, 1927
Plastic model, scale 1: 500, 70 x 110 x 49 cm.

5. House of the Government of Kazak Republic, 1928
Plastic model, scale 1: 200, 55 x 40 x 25 cm.
6. Tsentrosojuz, 1928
Plastic model, scale 1:750, 100 x 70 x 25 cm.
7. Worker's clubs of new social type variant A, 1928
Plastic model, scale 1:1000, 55 x 40 x 25 cm.
8. Worker's clubs of new social type variant B, 1928
Plastic model, scale 1:1000, 55 x 40 x 25 cm.

9. Monument to Cristoforo Colombo, 1929
Plastic model, scale 1: 1000, 79 x 68,5 x 50 cm.
10. Palace of Culture of Proletarskij district, 1930
Plastic model, scale 1:1000, 50 x 120 x 25 cm.
11. Linear city for the chemical combine of Magnitogorsk, 1930
Plastic model, scale 1:200, 148 x 192 x 25 cm
12. Headquarter of Heavy Industry Commisariat, 1934
Plastic model, scale 1:100, 410 x 200 x 220 cm.

EXHIBITION DESIGN:
Maurizio Meriggi
and Sabrina Greco

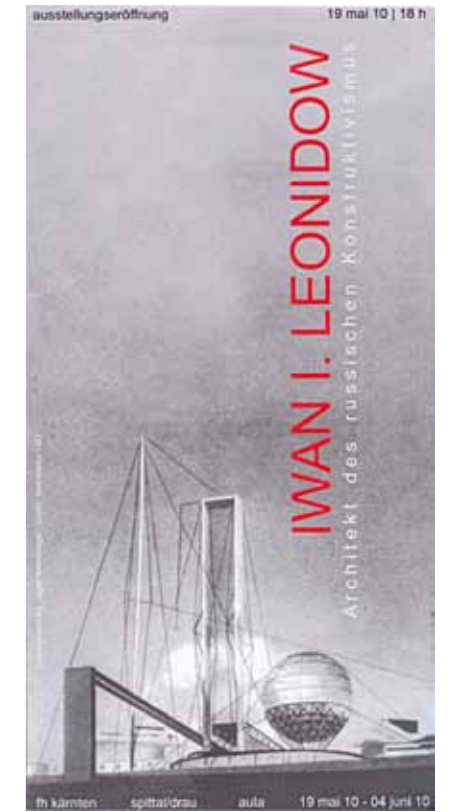
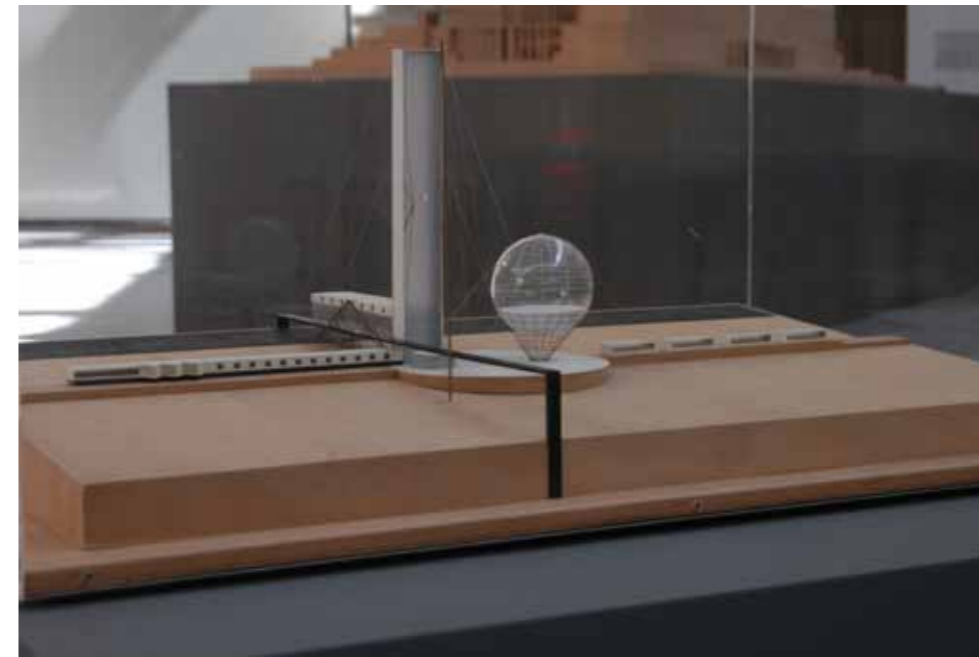


ARCHITEKTUR VON
IWAN LEONIDOV.
EIN RUSSISCHER
KONSTRUKTIVIST

ARCHITEKTUR IM RINGTURM
WIEN
19.03_30.04.2010



EXHIBITION DESIGN:
Maurizio Meriggi
and Sabrina Greco



IWAN LEONIDOV.
ARCHITEKT DES
RUSSISCHEN
KONSTRUCTIVISMUS

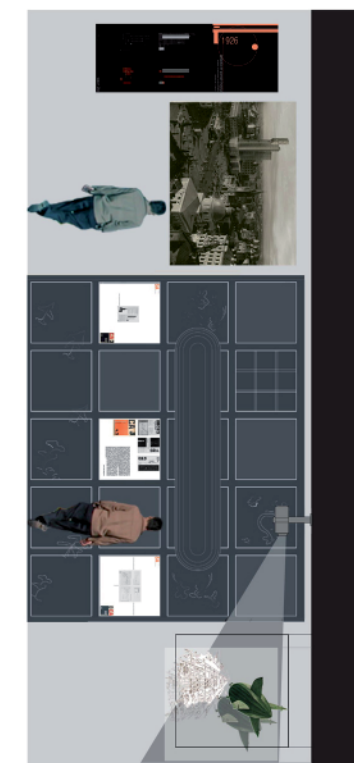
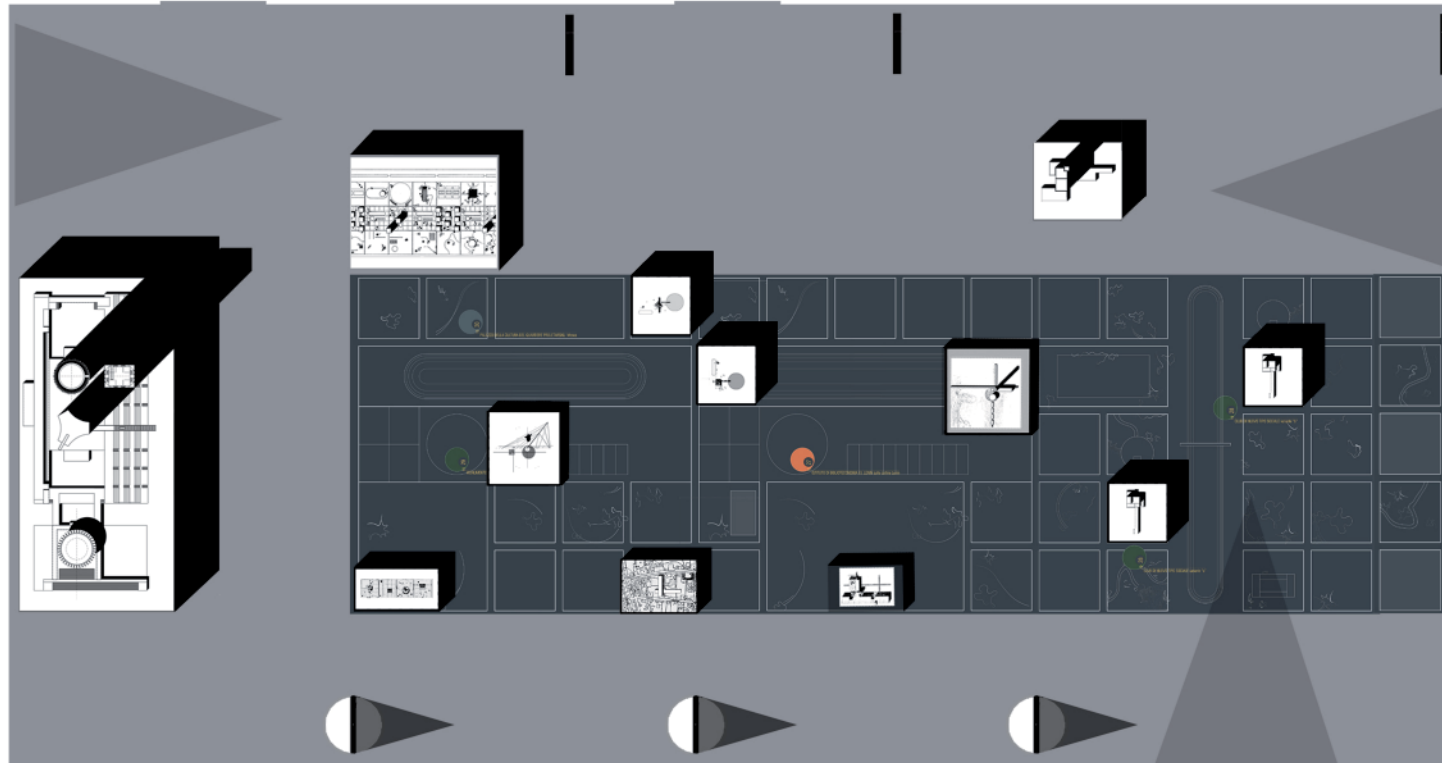
FH KAERTEN
SPITTAL/DRAU
19.05_04.06.2010

EXHIBITION DESIGN:
Maurizio Meriggi
and Sabrina Greco

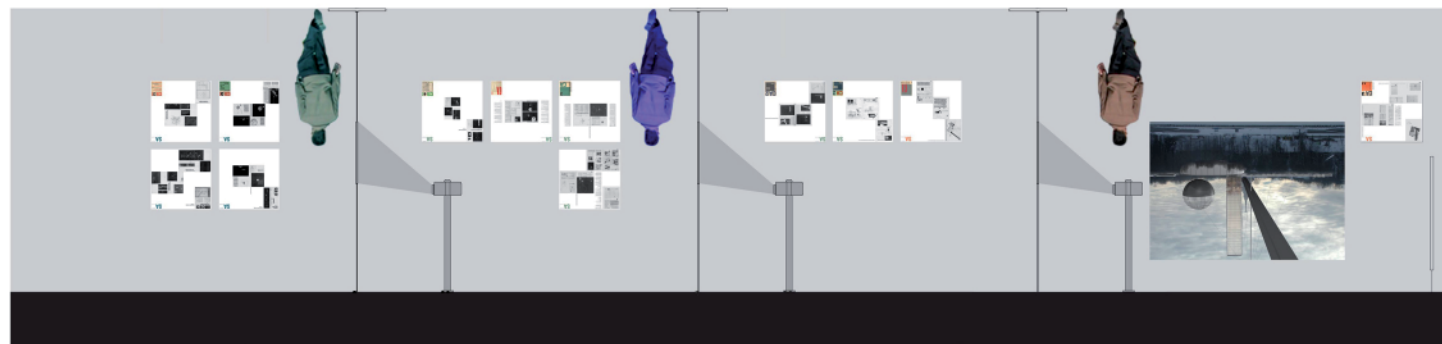
WALL D



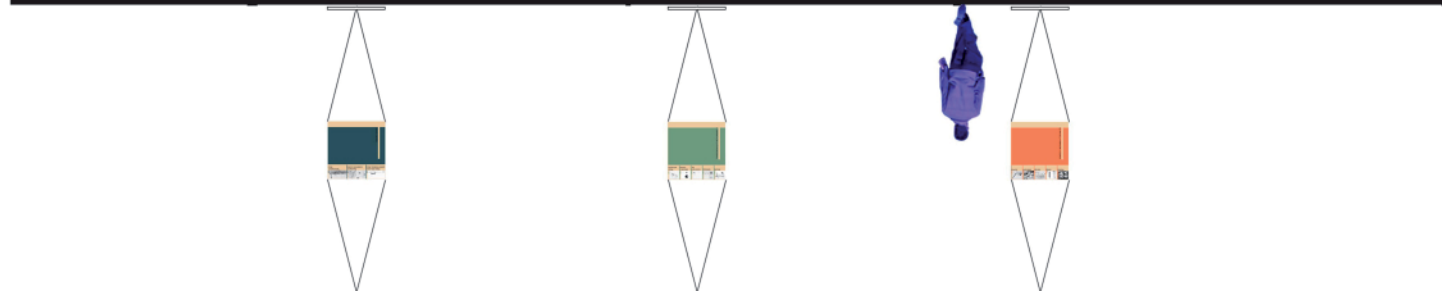
WALL A



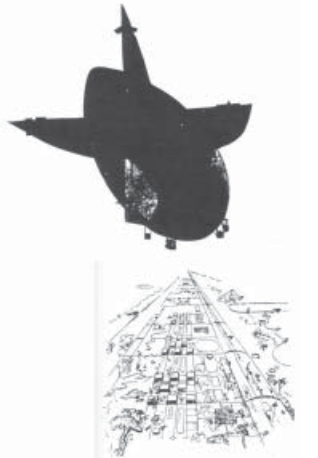
WALL B



WALL C



**A POSSIBLE CITY.
ARCHITECTURES
BY
IVAN LEONIDOV
1926-1934**



**MUSEUM OF FINNISH ARCHITECTURE
HELSINKI
Main hall**

EXHIBITION DESIGN:
Maurizio Meriggi and Sabrina Greco, Milan
proposal 1 - July 2008

scale 1:100





ENTRANCE



PLAN
Main hall of Museum
of Finnish Architecture
Helsinki

PLASTIC MODELS
(see presentation file at pages 12-21, 36-37)

- 1. Headquarter and factory of newspaper Izvestija, 1926**
Plastic model, scale 1:100, 140 x 100 x 126 cm.
- 2. Worker's clubs type for 500 persons, 1926**
Plastic model, scale 1:200, 60,5 x 40 x 25 cm.
- 3. Worker's clubs type for 1000 persons, 1926**
Plastic model, scale 1:200, 55 x 40 x 25 cm.
- 4. Lenin Institute, 1927**
Plastic model, scale 1: 500, 70 x 110 x 49 cm.

- 5. House of the Government of Kazak Republic, 1928**
Plastic model, scale 1: 200, 55 x 40 x 25 cm.
- 6. Tsentrosojuz, 1928**
Plastic model, scale 1:750, 100 x 70 x 25 cm.
- 7. Worker's clubs of new social type variant A, 1928**
Plastic model, scale 1:1000, 55 x 40 x 25 cm.
- 8. Worker's clubs of new social type variant B, 1928**
Plastic model, scale 1:1000, 55 x 40 x 25 cm.
- 9. Monument to Cristoforo Colombo, 1929**
Plastic model, scale 1: 1000, 79 x 68,5 x 50 cm.
- 10. Palace of Culture of Proletarskij district, 1930**
Plastic model, scale 1:1000, 50 x 120 x 25 cm.

- 11. Linear city for the chemical combine of Magnitogorsk, 1930**
Plastic model, scale 1:200, 148 x 192 x 25 cm
- 12. Headquarter of Heavy Industry Commissariat, 1934**
Plastic model, scale 1:100, 410 x 200 x 220 cm.

CARPET - PRINT ON PVC
(see presentation file at pages 34-35)

- 13. Modules of Magnitogorsk linear city, 1930**
print on PVC, 445 x 1450 cm., scale 1:30

scale 1:50

A POSSIBLE CITY.
ARCHITECTURES
BY
IVAN LEONIDOV

1926-1934



EXHIBITION DESIGN:
Maurizio Meriggi and Sabrina Greco, Milan
proposal 1 - July 2008



Headquarter of the newspaper Ivestija,
Moscow 1926
redrawings, panel 90 x 240 cm.

Worker's club for 500 and 1000 persons,
1926
redrawings, panel 90 x 240 cm.

Lenin Institute,
Moscow 1927
redrawings, panel 90 x 240 cm.

House of Government of Kazak Republic,
Alma Ata 1928
redrawings, panel 90 x 240 cm.

Tsentrosojuz,
Moscow 1928
redrawings, panel 90 x 240 cm.

Worker's club of new social type
var. A and B, 1928
redrawings, panel 90 x 240 cm.

Биография Ивана Леонидовича Магомедова
1928
ИВАН ЛЕОНИДОВ' S BIOGRAPHY 1901-1930
Text by S. O. Khan Magomedov,
panel 90 x 240 cm.

Биография Ивана Леонидовича Магомедова
1930
ИВАН ЛЕОНИДОВ' S BIOGRAPHY 1901-1930
redrawings, panel 90 x 240 cm.

Магнитогорск linear city,
Магнитогорск 1930
redrawings, panel 90 x 240 cm.

Наркомтяжпром
Moscow 1934
redrawings, panel 90 x 240 cm.

PANELS - REDRAWINGS AND BIOGRAPHY
(see presentation file at pages 25-28)

WALL A
Main hall of Museum
of Finnish Architecture
Helsinki

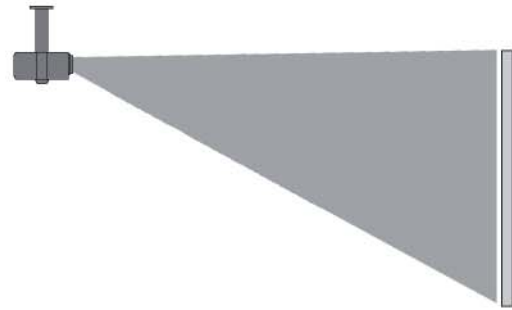
A POSSIBLE CITY.
ARCHITECTURES
BY
IVAN LEONIDOV



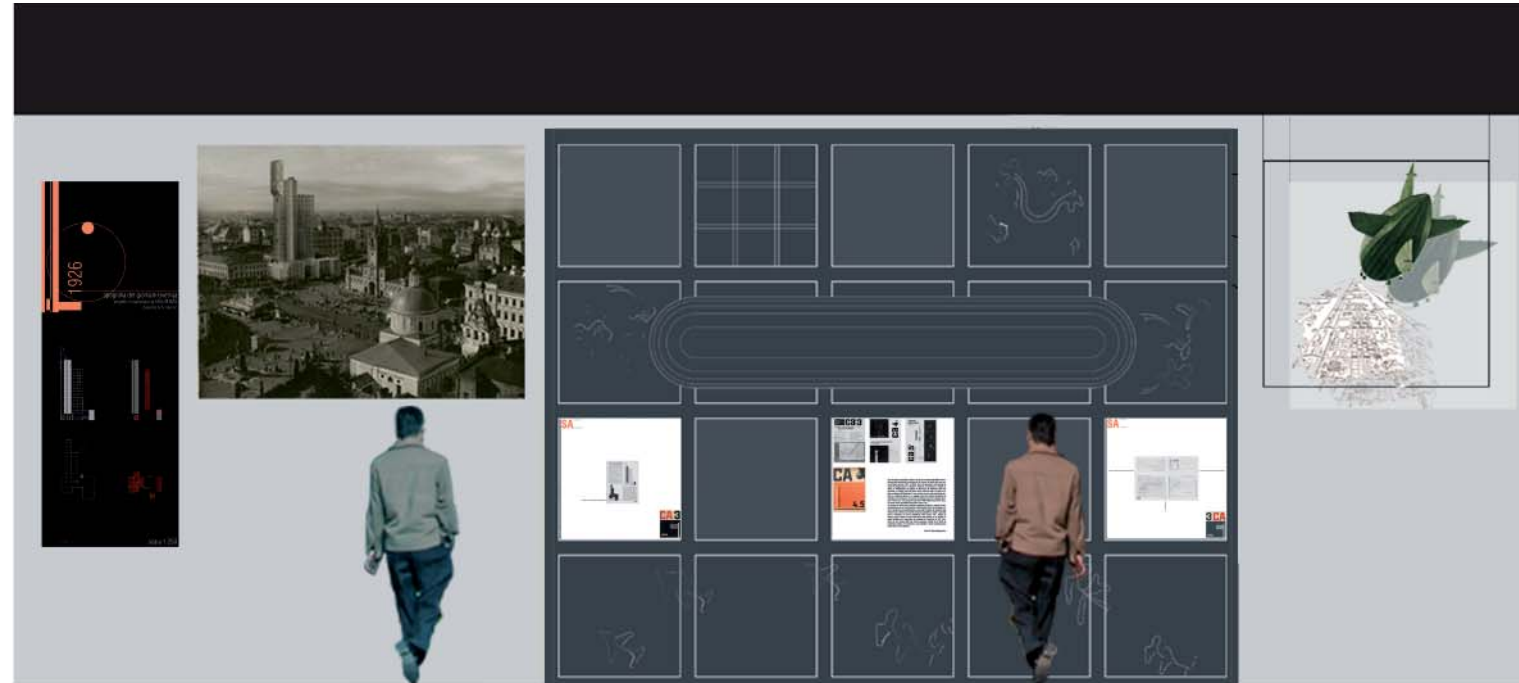
1926-1934

EXHIBITION DESIGN:
Maurizio Meriggi and Sabrina Greco, Milan
proposal 1 - July 2008

video projector 3500 lumen



screen for video projection, 230 x 172,5 cm.



Virtual reconstruction:
Headquarter and factory of newspaper Izvestija, Moscow 1926
video projection, files flash/pal format 3 minutes

MODULE OF MAGNITOGORSK LINEAR CITY, (SCALE 1:30), 1930
print on PVC, 445 x 360 cm.

Magnitogorsk linear city perspective view and the Zeppelin, 1930
perpex panel, 150 x 150 cm.

Headquarter of the newspaper Izvestija, Moscow 1926
redrawings, panel 90 x 240 cm.

"Sovremennaja Arkhitektura. 3-1926"
original drawings of the
Headquarter of the newspaper Izvestija,
pages in original size, panel 80x80 cm.

"Sovremennaja Arkhitektura" 1926-30
explanatory note by S. O. Khan Magomedov
about Leonidov's original drawings
published in "S. A.", S. O. Khan Magomedov
panel 80x80 cm.

"Sovremennaja Arkhitektura" 3-1927
original drawings of the
Worker's club for 500 and 1000 persons,
pages in original size, panel 80x80 cm.

WALL B
Main hall of Museum
of Finnish Architecture
Helsinki

PANELS - REDRAWINGS AND BIOGRAPHY
(see presentation file at pages 25-28)

**VIRTUAL RECONSTRUCTIONS OF VISUAL IMPACT IN THE URBAN
LANDSCAPE OF MOSCOW**
(see presentation file at pages 8-11)

**PANELS - EXTRACTS FROM THE ARCHITECTURALMAGAZINE
"SOVREMMENAJA ARKHITEKTURA. 1926-1930"**
(see presentation file at pages 29-33)

PRINT ON PVC
(see presentation file at pages 34-35)

EXHIBITION COVER PANEL
(see presentation file at pages 24)

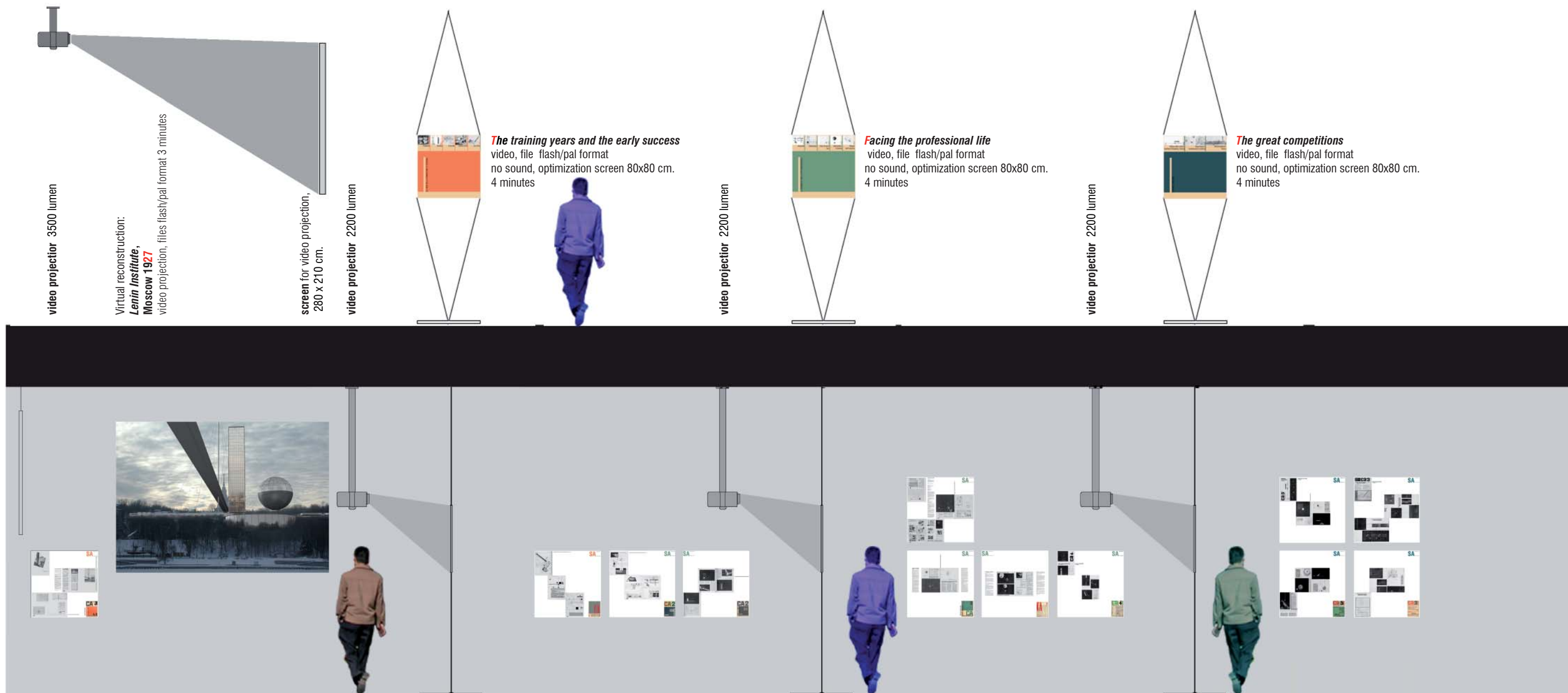
**A POSSIBLE CITY.
ARCHITECTURES
BY
IVAN LEONIDOV**

1926-1934



EXHIBITION DESIGN:
Maurizio Meriggi and Sabrina Greco, Milan
proposal 1 - July 2008

scale 1:50



video projector 3500 lumen

Virtual reconstruction:
**Lenin Institute,
Moscow 1927**
video projection, files flash/pal format 3 minutes

screen for video projection,
280 x 210 cm.

video projector 2200 lumen

The training years and the early success
video, file flash/pal format
no sound, optimization screen 80x80 cm.
4 minutes

video projector 2200 lumen

Facing the professional life
video, file flash/pal format
no sound, optimization screen 80x80 cm.
4 minutes

video projector 2200 lumen

The great competitions
video, file flash/pal format
no sound, optimization screen 80x80 cm.
4 minutes

"**Sovremennaja Arkhitektura**" 4/5-1927
original drawings of the
Lenin Institute,
pages in original size, panel 80x80 cm.

"**Sovremennaja Arkhitektura**" 2-1929
original drawings of the
Tsentrosojuz,
pages in original size, panel 80x80 cm.

"**Sovremennaja Arkhitektura**" 2-1928
original drawings of the
House of Government of Kazak Republic,
pages in original size, panel 80x80 cm.

"**Sovremennaja Arkhitektura**" 1-1928
original drawings of the
Sov-kino Film Production Complex,
pages in original size, panel 80x80 cm.

"**Sovremennaja Arkhitektura**" 4-1930
original drawings of the
House of Industry,
pages in original size, panel 80x80 cm.

"**Sovremennaja Arkhitektura**" 4-1929
original drawings of the
Cristoforo Colombo's monument,
pages in original size, panel 80x80 cm.

"**Sovremennaja Arkhitektura**" 3-1929
original drawings of the
Worker's club of new social type,
pages in original size, panel 80x80 cm.

"**Sovremennaja Arkhitektura**" 3-1930
original drawings of the
Magnitogorsk linear city,
pages in original size, panel 80x80 cm.

"**Sovremennaja Arkhitektura**" 5-1930
original drawings of the
Palace of culture of Proletarskij district,
pages in original size, panel 80x80 cm.

WALL C
Main hall of Museum
of Finnish Architecture
Helsinki

VIRTUAL RECONSTRUCTIONS OF VISUAL IMPACT IN THE URBAN
LANDSCAPE OF MOSCOW
(see presentation file at pages 8-11)

PANELS - EXTRACTS FROM THE ARCHITECTURALMAGAZINE
"SOVREMENAJA ARKHITEKTURA. 1926-1930"
(see presentation file at pages 29-33)

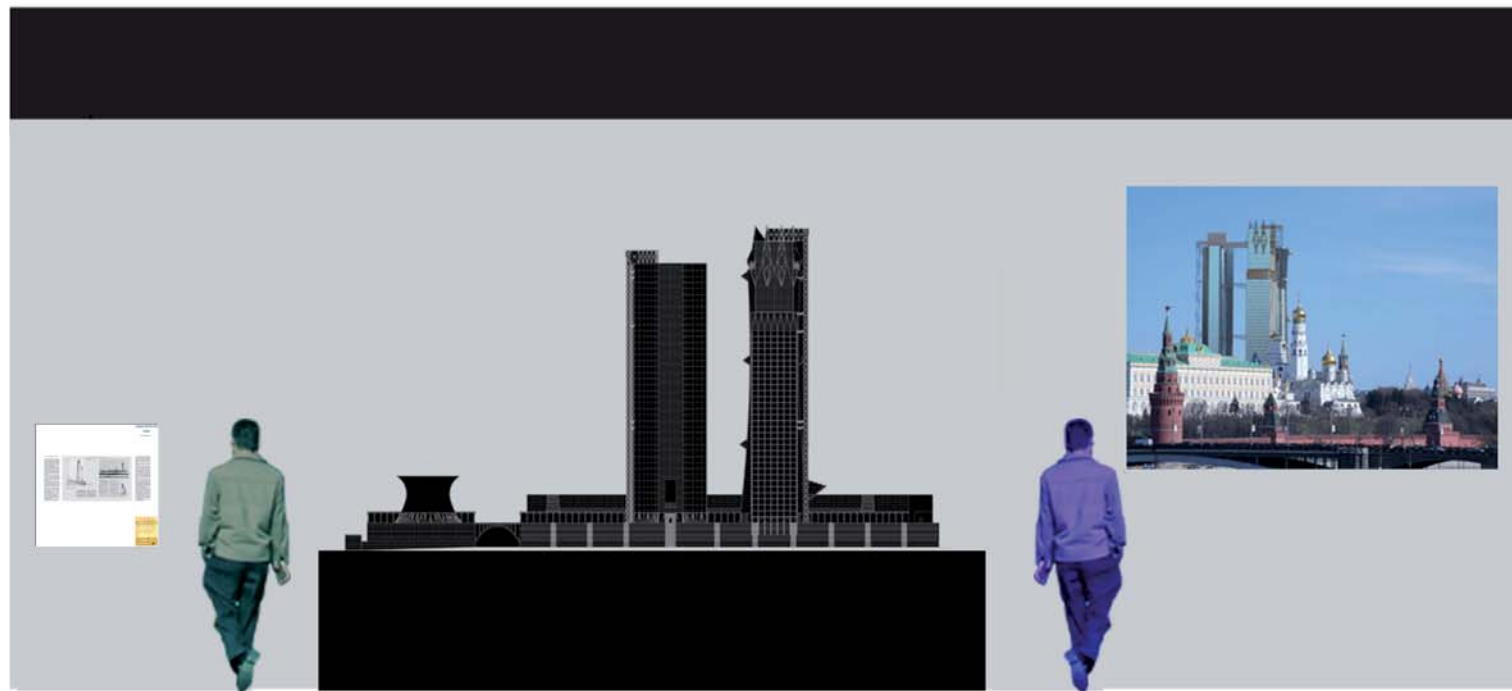
VISUAL COMMENTARY TO THE ARTISTIC AND PROFESSIONAL LIFE
OF IVAN LEONIDOV FROM 1922 TO 1934
(see presentation file at pages 22-23)

A POSSIBLE CITY.
ARCHITECTURES
BY
IVAN LEONIDOV

1926-1934



EXHIBITION DESIGN:
Maurizio Meriggi and Sabrina Greco, Milan
proposal 1 - July 2008



Virtual reconstruction:
Narkomjazprom
Moscow 1934
 video projection, files flash/pal format 3 minutes

screen for video projection, 280 x 210 cm.

video projector 3500 lumen

"Arkhitektura SSR. 10-1934"
 original drawings of the
 Headquarter of People's Commissariat of
 Heavy Industry (Narkomjazprom),
 pages in original size, panel 80x80 cm.

WALL D
 Main hall of Museum
 of Finnish Architecture
 Helsinki

PANELS - EXTRACTS FROM THE ARCHITECTURALMAGAZINE
 "SOVREMENAJA ARKHITEKTURA. 1926-1930"
 (see presentation file at pages 29-33)

VIRTUAL RECONSTRUCTIONS OF VISUAL IMPACT IN THE URBAN
 LANDSCAPE OF MOSCOW
 (see presentation file at pages 8-11)

A POSSIBLE CITY.
 ARCHITECTURES
 BY
 IVAN LEONIDOV

1926-1934



EXHIBITION DESIGN:
 Maurizio Meriggi and Sabrina Greco, Milan
 proposal 1 - July 2008

scale 1:50

ANNEXES

Budget
Details

**A POSSIBLE CITY.
ARCHITECTURES
BY
IVAN LEONIDOV
1926-1934**



MUSEUM OF FINNISH ARCHITECTURE
HELSINKI
Main hall

EXHIBITION DESIGN:
Maurizio Meriggi and Sabrina Greco, Milan
proposal 1 - July 2008

A. EXHIBITION EQUIPMENT				
1. Models (wood, cartboard, plexiglass, plastic)				
	12 models of various dimension		see Model's list	furnished by DPA
2. Bases for small models (wood painted in gray)				
	5 pieces cm. 80 x 80 x 113	cube m. 3,316	see detail 1	
	1 piece cm. 113 x 113 x 56,5	cube m. 0,721	see detail 1	
	1 piece cm. 100 x 70 x 113	cube m. 0,791	see detail 1	
	1 piece cm. 96,5 x 96,5 x 56,5	cube m. 0,526	see detail 1	
	1 piece cm. 56,5 x 56,5 x 113	cube m. 0,360	see detail 1	
3. Bases for big models (wood painted in gray)				
	1 piece cm. 160 x 113 x 113		see detail 1	must be provided by MFA
	1 piece cm. 148 x 192 x 113		see detail 1	
	1 piece cm. 240 x 483 x 113		see detail 1	
4. Base for carpet (print on walkable pvc)				
	30 pieces cm. 100 x 200 x 3 + 15 pieces cm. 100 x 45 x 3	cube m. 2	see detail 2	furnished by DPA
5. Frame for carpet on wall (print on walkable pvc)				
	1 piece cm. 4.40 x 4,49 x 3		see detail 3	must be provided by MFA
6. Panels "Redrawings" (print on photopaper on forex 0,5 cm.)				
	14 pieces cm. 90 x 240	square m. 30,24	see Wall A	can be furnished (text in italian) by DPA
7. Panels "SA" (print on photopaper on forex 0,5 cm.)				
	16 pieces cm. 80 x 80	square m. 10,24	see Wall B, C, D	can be furnished (text in italian) by DPA
8. Magnitogorsk carpet (print on walkable pvc)				
	4 modules cm. 4,54 x 4,49	square m. 81,15	see Plan and Wall B	can be furnished (text in italian) by DPA
9. Magnitogorsk poster (print on perpex)				
	1 piece cm. 1,50 x 1,50		see Wall B	furnished by DPA
10. "Antenna" (suspended structure for video retro projection)				
	3 pieces		see Wall C and detail 4	furnished by DPA
11. Screens (for video projection)				
	1 screen cm. 220 x 172,5		see Wall B	must be provided by MFA
	2 screen cm. 280 x 210		see Wall C, D	must be provided by MFA

12. Projectors and DVD readers (suspended on the ceiling)				
	3 projectors 220 lumen and 3 DVD readers		see Wall C	must be provided by MFA
	3 projectors 3500 lumen and 3 DVD reader		see Wall B, C, D	must be provided by MFA
B. EXHIBITION MONTAGE				
model Narkomtjazzprom				
	requires one person from Italy for 3 nights and flight (2 days to unpackage and to assemble)			
	requires one person from Italy for 2 nights and flight (1 and 1/2 days to package)			negotiable
C. TRANSPORT MILAN-HELSINKI				
	1. bases for small models	9 pieces	cube m. 5,7	see A. 1
	2. base for carpet	45 pieces	cube m. 2	see A. 4
	3. models	13 wooden boxes	cube m. 13,2	see Model's list
	4. panels	30 pieces	cube m. 0,02	see A. 6/7
	5. "antennas"	3 pieces in 1 box (cm. 90 x90 x 30)	cube m. 0,2	see A. 10
	6. "carpet"	4 rolls (cm. 15 x 450)	cube m. 2,4	see A. 8
			cube m. 23,52	
D. INSURANCE				
	insurance for models and	value 62.500 €.	see Model's list	
E. VERNISAGE				
	one person from Russia for 3 nights and flight			
	one person from Europe (Milan, Stuttgart or Delft) for 3 nights and flight			negotiable
E. EXHIBITION FEE for 2 months				
	to be paid to DPA of Milan Polytechnic University	8000 €.		

BUDGET

NOTES

Almost **graphic materials** (see here **A.6, A.7, A.8**) have titles and text in italian.

A new print is recomanded expecially for *panels*. Nevertheless is possible in any case to make small panels with translation in Finnish or English of all titles and short text to be sided to the panels.

For the *carpet*, considering that the titles of the models printet on the pvc look like a lettering composition, the reprint could be skipped out.

All **visual materials** (see presentation pdf file at pages 8-11, 22-23) have titles and text in italian.

The files (AVI for DVD reader) can be furnished in Finnish or English. For Finnish translation we will provide you English Version. The new text can be dialed in the flash files by us, or if you retain necessary directly by you.

All **the bases** for the models furnished by us must be painted again.

For the **montage of the Narkomtjazzprom model** (see **B**, here) is required the presence of two people to help the modellist. The second trip of the modellist to pack back the model can be skipped out if you can guarantee a perfect packaging (for instance by filming the unpackaging to memorize all the steps).

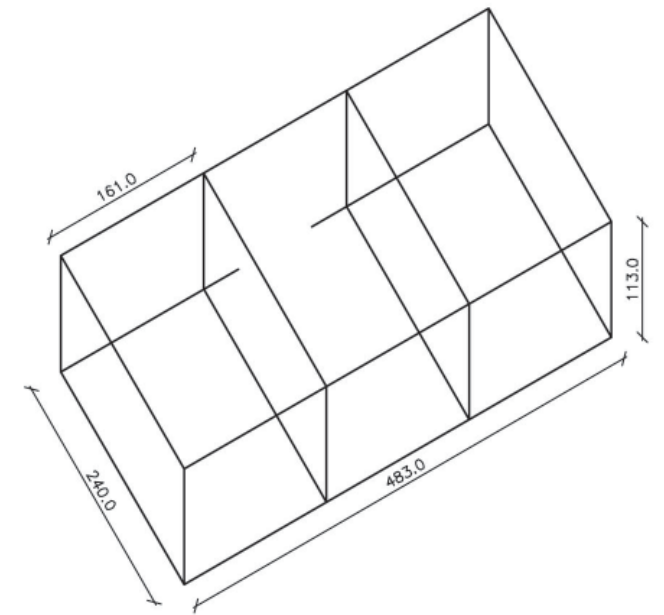
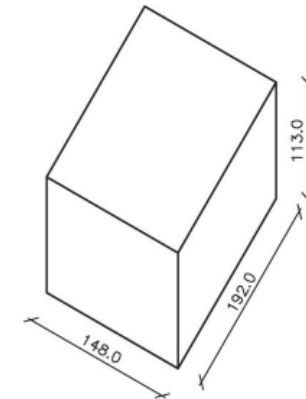
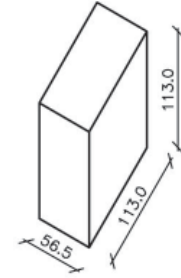
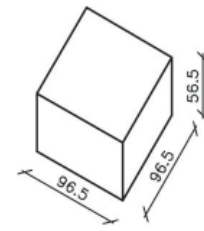
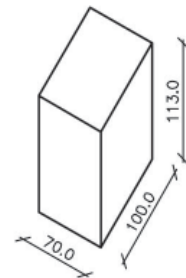
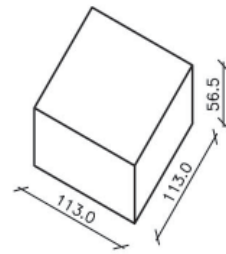
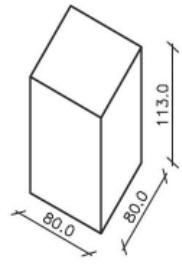
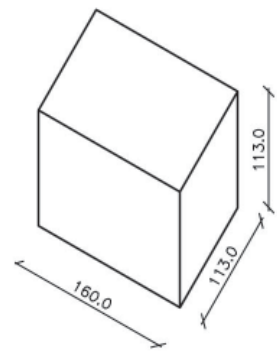
My presence (Maurizio Meriggi) to the **vernissage** (see **E** here) can be supported by DPA.

A POSSIBLE CITY.
ARCHITECTURES
BY
IVAN LEONIDOV

1926-1934



EXHIBITION DESIGN:
Maurizio Meriggi and Sabrina Greco, Milan
proposal 1 - July 2008



Headquarter and factory of newspaper Izvestija, 1926

Worker's clubs type for 500 persons, 1926

Worker's clubs type for 1000 persons, 1926

Worker's clubs of new social type variant A, 1928

Worker's clubs of new social type variant B, 1928

House of the Government of Kazak Republic, 1928

Lenin Institute, 1927

Tsentrosojuz, 1928

Monument to Cristoforo Colombo, 1929

Palace of Culture of Proletarskij district, 1930

Linear city for the chemical combine of Magnitogorsk, 1930

Headquarter of Heavy Industry Commisariat, 1934

1 piece
resistant to medium weight

5 piece
resistant to light weight

1 piece
resistant to light weight

1 piece
resistant to light weight

1 piece
resistant to light weight

1 piece
resistant to light weight

1 piece
resistant to medium weight
(2 mirrors are included in the model)

made of 3 pieces of 161 x 240 x 113 cm.
resistant to big weight, the interior of the base must be accessible to fix the model to the base with scrulls

Base: 160 x 113 x 113 cm.

Base: 80 x 80 x 113 cm.

Base: 113 x 113 x 56,5 cm.

Base: 70 x 100 x 113 cm.

Base: 96,5 x 96,5 x 56,5 cm.

Base: 56,5 x 113 x 113 cm.

Base: 148 x 192 x 113 cm.

Base: 240 x 483 x 113 cm.

**Detail 1
BASES FOR MODELS**

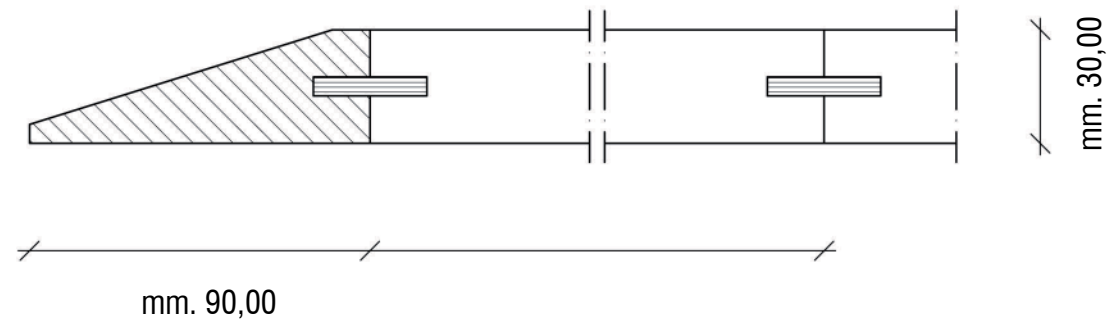
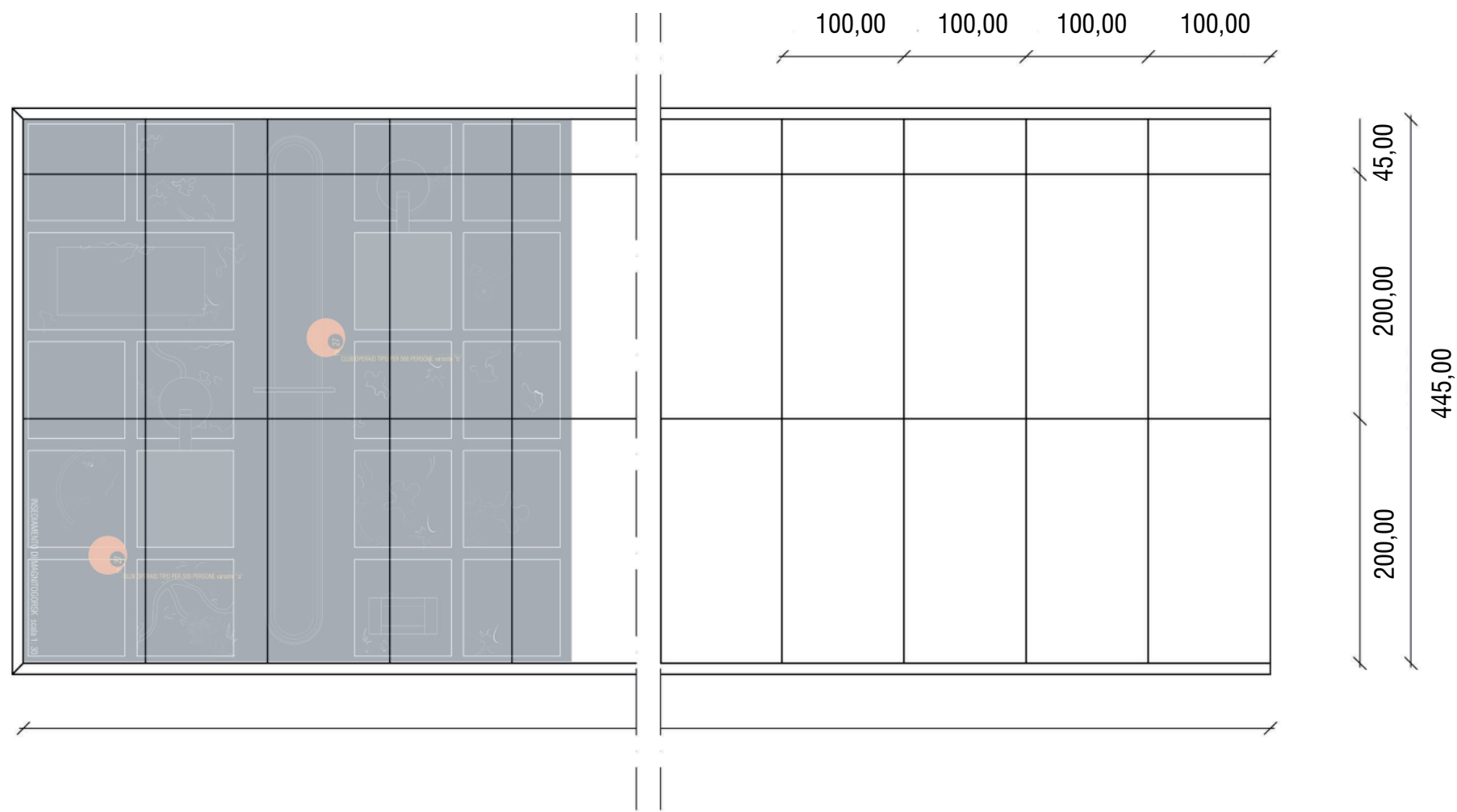
scale 1:50

**A POSSIBLE CITY.
ARCHITECTURES
BY
IVAN LEONIDOV**

1926-1934

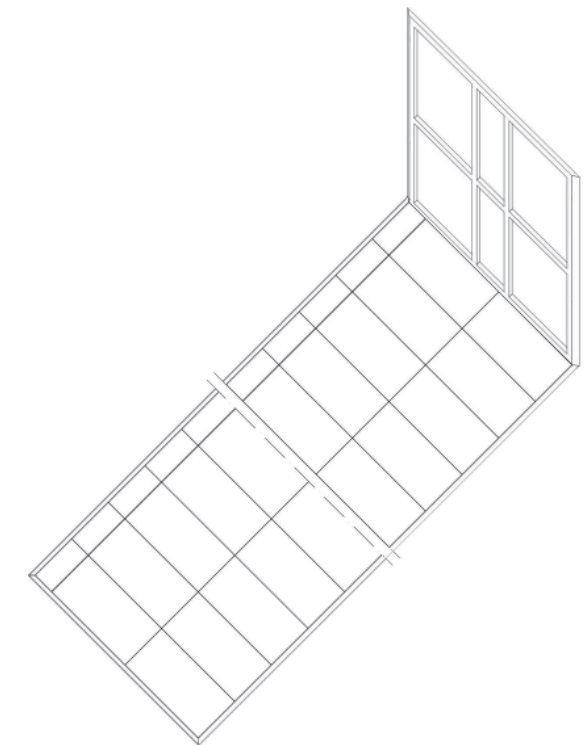
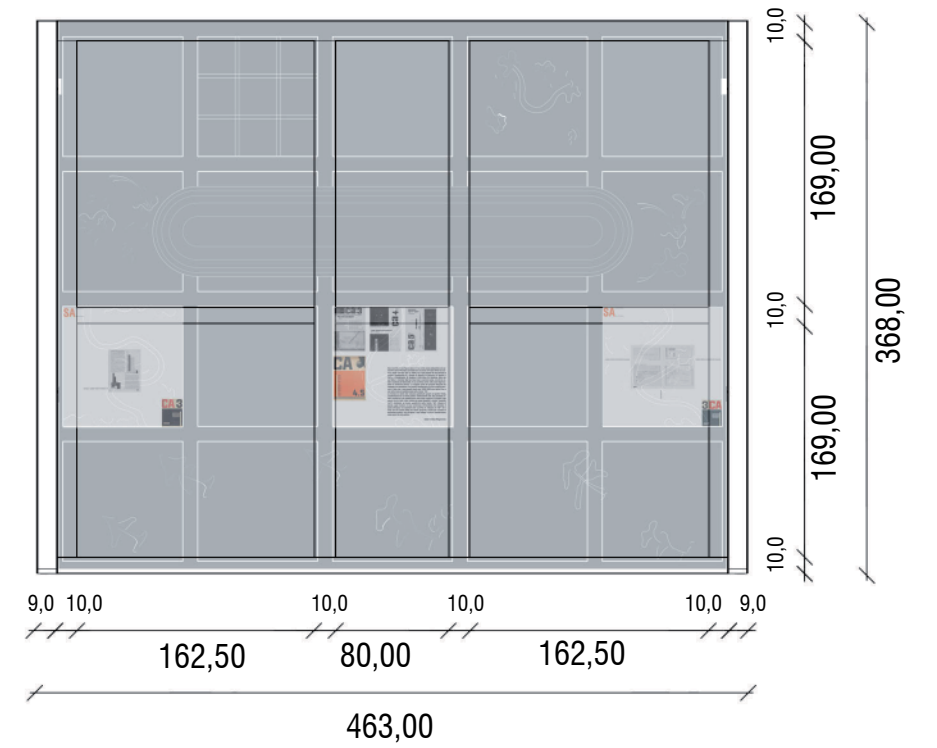


EXHIBITION DESIGN:
Maurizio Meriggi and Sabrina Greco, Milan
proposal 1 - July 2008



Detail 2
BASE FOR CARPET

scale 1:50



Detail 3
FRAME FOR CARPET

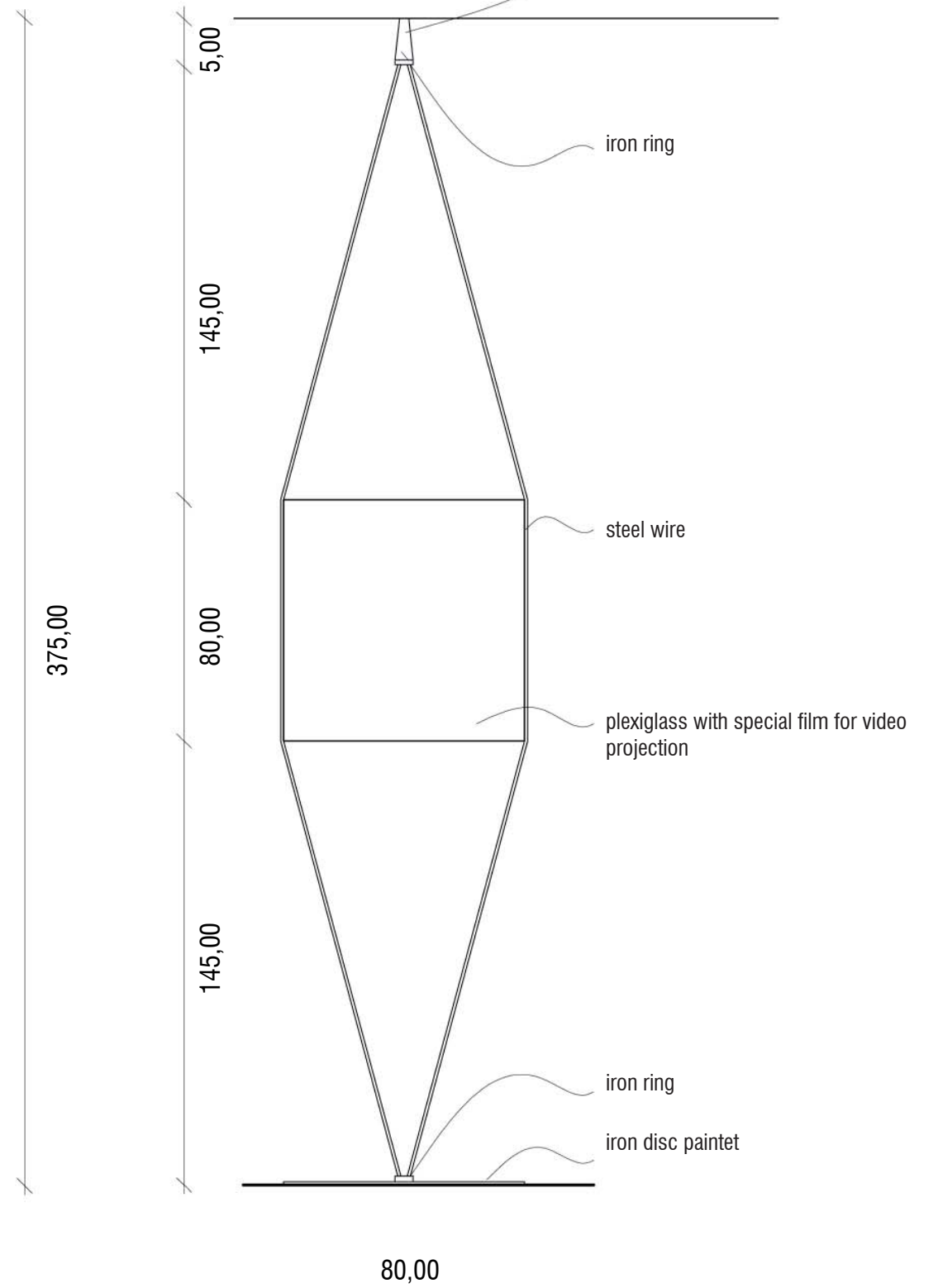
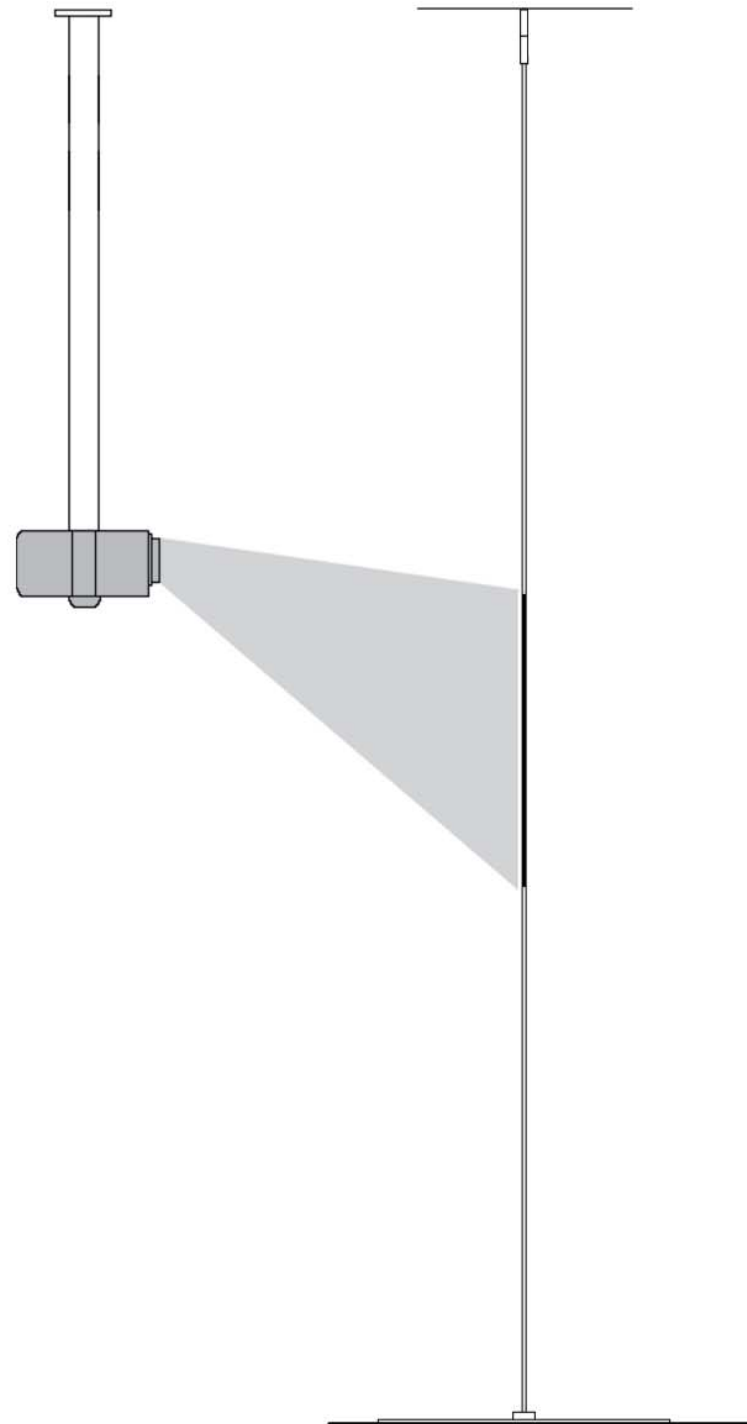
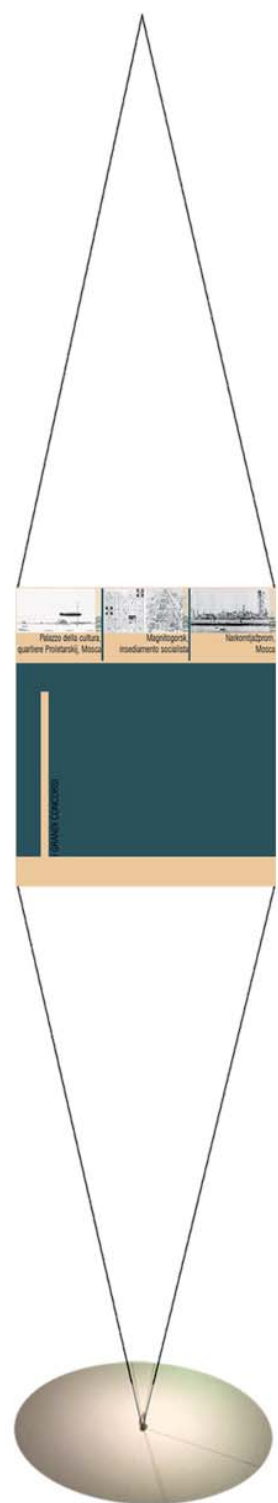
scale 1:50

A POSSIBLE CITY.
ARCHITECTURES
BY
IVAN LEONIDOV

1926-1934



EXHIBITION DESIGN:
Maurizio Meriggi and Sabrina Greco, Milan
proposal 1 - July 2008



**Detail 4
ANTENNA**

scale 1:20

**A POSSIBLE CITY.
ARCHITECTURES
BY
IVAN LEONIDOV**

1926-1934



EXHIBITION DESIGN:
Maurizio Meriggi and Sabrina Greco, Milan
proposal 1 - July 2008

Exhibition: A POSSIBLE CITY. ARCHITECTURES BY IVAN LEONIDOV

List of the models

Box	B. dimensions	B. Volume	Model N°.	Subject	Net dimensions	Insurance value
A	124 x 80 x 61 cm	0,605 m ³	1	Lenin Institute	71,5 x 111 x 50,5 cm	2.000, €
B	102 x 63 x 67 cm	0,430 m ³	4	Worker's club for 1000 people	56 x 41 x 25,5 cm	800, €
			5	Worker's club of new social type (A)	56,2 x 41,2 x 25,5 cm	1.000,€
			6	Worker's club of new social type (B)	56,2 x 41,2 x 25,5 cm	1.000,€
			8	Palace of the Government in Alma Ata	56,2 x 41,2 x 25,5 cm	1.000,€
C	116 x 98 x 92 cm	1,04 m ³	7	Palace of culture of the Proletarskij district in Moscow	35 x 103 x 25,5 cm	1.200,€
			2	Monument to Cristoforo Colombo in Santo Domingo	79 x 68,5 x 50 cm	1.500, €
			3	Worker's club for 500 people	61,5 x 41,3 x 25,5 cm	800, €
D	98,5 x150,5 x41,5 cm.	0,613 m ³	10	Magnitogorsk linear city	148 x 192 x 25 cm.	3.000, €
E	108,5 x 78 x 33 cm.	0,279 m ³	9	Tzentrosojuz in Moscow	100 x 70 x 25 cm.	1.500, €
F	155 x 115 x 140 cm.	2,495 m ³	11	Izvestija high-rise in Moscow	140 x 100 x 126 cm.	9.000, €
G1	196 x 76 x 85 cm.	1,266 m ³	12	Narkomtjazprom high-rise in Moscow	410 x 200 x 220 cm.	36.000, €
G2	214 x 56 x 56 cm.	0,671 m ³	12			
G3	200 x 68 x 62 cm.	0,843 m ³	12			
G4	204 x 160 x 71 cm.	2,317 m ³	12			
G5	293 x 99 x 36 cm.	1,044 m ³	12			
G6	283 x 46 x 52 cm.	0,676 m ³	12			
G7	204 x 160 x 30 cm.	0,979 m ³	12			
	TOTAL					
13		13,258 m³	12			58.000, €